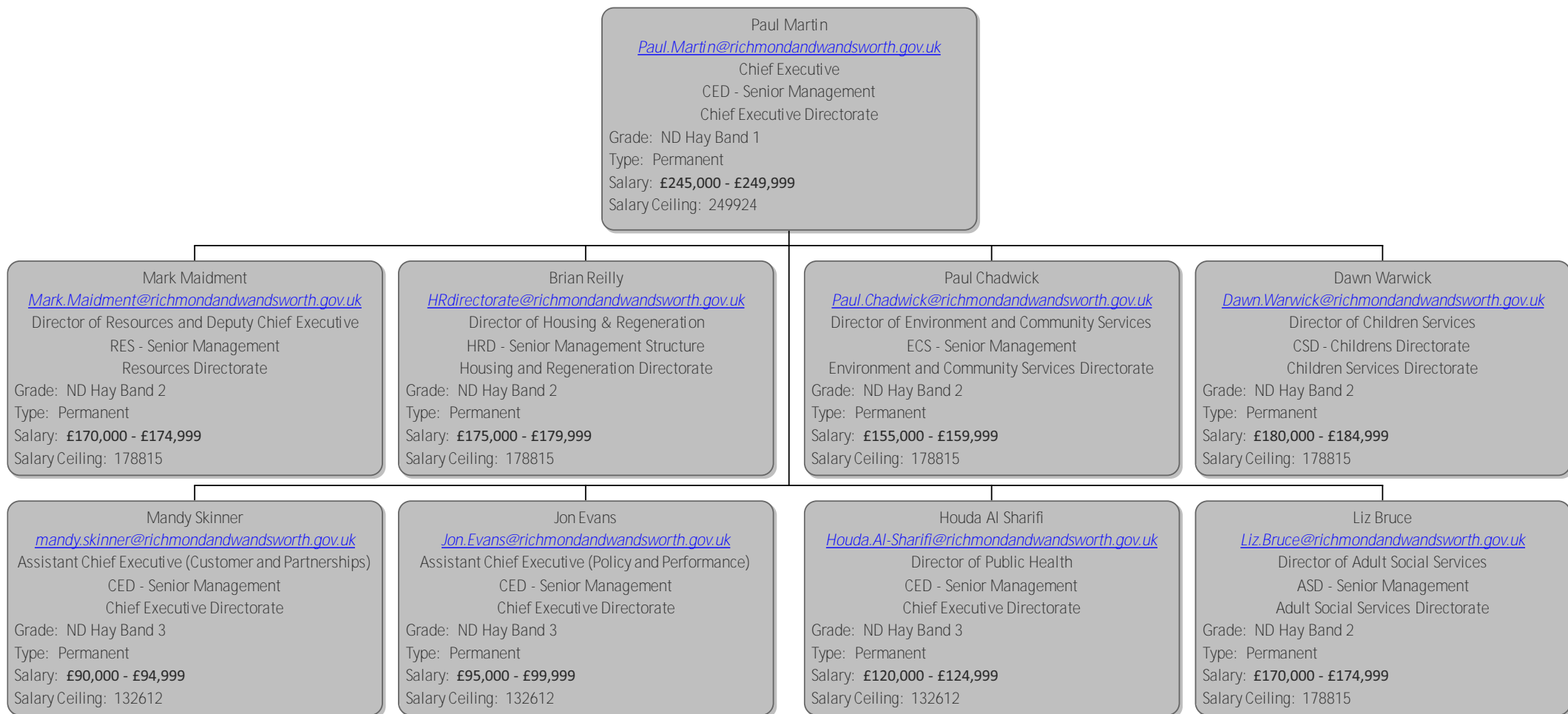


**Senior Management WBC**



Mark Maidment  
[Mark.Maidment@richmondandwandsworth.gov.uk](mailto:Mark.Maidment@richmondandwandsworth.gov.uk)  
Director of Resources and Deputy Chief Executive  
RES - Senior Management  
Resources Directorate  
Grade: ND Hay Band 2  
Type: Permanent  
Salary: **£170,000 - £174,999**  
Salary Ceiling: 178815

Mike Gravatt  
[Mike.Gravatt@richmondandwandsworth.gov.uk](mailto:Mike.Gravatt@richmondandwandsworth.gov.uk)  
Assistant Director of Resources (Corporate Services)  
RES - Senior Management  
Resources Directorate  
Grade: ND Hay Band 3  
Type: Permanent  
Salary: **£115,000 - £119,999**  
Salary Ceiling: 132612

Fenella Merry  
[FMerry@wandsworth.gov.uk](mailto:FMerry@wandsworth.gov.uk)  
Assistant Director of Resources (Financial Management)  
RES - Senior Management  
Resources Directorate  
Grade: ND Hay Band 3  
Type: Permanent  
Salary: **£120,000 - £124,999**  
Salary Ceiling: 132612

Paul Guillioti  
[PGuillioti@wandsworth.gov.uk](mailto:PGuillioti@wandsworth.gov.uk)  
Assistant Director of Resources (Financial Services)  
RES - Senior Management  
Resources Directorate  
Grade: ND Hay Band 3  
Type: Permanent  
Salary: **£115,000 - £119,999**  
Salary Ceiling: 132612

Graham Russell  
[Graham.Russell@richmondandwandsworth.gov.uk](mailto:Graham.Russell@richmondandwandsworth.gov.uk)  
Assistant Director of Resources (Revenue Services)  
RES - Senior Management  
Resources Directorate  
Grade: ND Hay Band 3  
Type: Permanent  
Salary: **£110,000 - £114,999**  
Salary Ceiling: 132612

Brian Reilly  
[HRdirector@richmondandwandsworth.gov.uk](mailto:HRdirector@richmondandwandsworth.gov.uk)  
Director of Housing & Regeneration  
HRD - Senior Management Structure  
Housing and Regeneration Directorate  
Grade: ND Hay Band 2  
Type: Permanent  
Salary: **£175,000 - £179,999**  
Salary Ceiling: 178815

Ian Stewart  
[HRdirector@richmondandwandsworth.gov.uk](mailto:HRdirector@richmondandwandsworth.gov.uk)  
Assistant Director (Housing Management)  
HRD - Senior Management Structure  
Housing and Regeneration Directorate  
Grade: ND Hay Band 3  
Type: Permanent  
Salary: **£110,000 - £114,999**  
Salary Ceiling: 132612

Dave Worth  
[HRdirector@richmondandwandsworth.gov.uk](mailto:HRdirector@richmondandwandsworth.gov.uk)  
Assistant Director (Housing Services)  
HRD - Senior Management Structure  
Housing and Regeneration Directorate  
Grade: ND Hay Band 3  
Type: Permanent  
Salary: **£115,000 - £119,999**  
Salary Ceiling: 132612

Andy Algar  
[HRdirector@richmondandwandsworth.gov.uk](mailto:HRdirector@richmondandwandsworth.gov.uk)  
Assistant Director (Property Services)  
HRD - Senior Management Structure  
Housing and Regeneration Directorate  
Grade: ND Hay Band 3  
Type: Permanent  
Salary: **£120,000 - £124,999**  
Salary Ceiling: 132612

Chris Jones  
[HRdirector@richmondandwandsworth.gov.uk](mailto:HRdirector@richmondandwandsworth.gov.uk)  
Assistant Director (Strategy & Development)  
HRD - Senior Management Structure  
Housing and Regeneration Directorate  
Grade: ND Hay Band 3  
Type: Permanent  
Salary: **£95,000 - £99,999**  
Salary Ceiling: 132612

Paul Chadwick  
[Paul.Chadwick@richmondandwandsworth.gov.uk](mailto:Paul.Chadwick@richmondandwandsworth.gov.uk)  
Director of Environment and Community Services  
ECS - Senior Management  
Environment and Community Services Directorate  
Grade: ND Hay Band 2  
Type: Permanent  
Salary: **£155,000 - £159,999**  
Salary Ceiling: 178815

Ishbel Murray  
[Ishbel.Murray@richmondandwandsworth.gov.uk](mailto:Ishbel.Murray@richmondandwandsworth.gov.uk)  
Assistant Director of Environment & Community Services (Contracts & Leisure)  
ECS - Senior Management  
Environment and Community Services Directorate  
Grade: ND Hay Band 3  
Type: Permanent  
Salary: **£105,000 - £109,999**  
Salary Ceiling: 132612

Tim Cronin  
[Tim.Cronin@richmondandwandsworth.gov.uk](mailto:Tim.Cronin@richmondandwandsworth.gov.uk)  
Assistant Director of Environment & Community Services (Planning and Transport)  
ECS - Senior Management  
Environment and Community Services Directorate  
Grade: ND Hay Band 3  
Type: Permanent  
Salary: **£115,000 - £119,000**  
Salary Ceiling: 132612

Nick O'Donnell  
[Nick.O'Donnell@richmondandwandsworth.gov.uk](mailto:Nick.O'Donnell@richmondandwandsworth.gov.uk)  
Assistant Director of Environment & Community Services (Traffic & Engineering)  
ECS - Senior Management  
Environment and Community Services Directorate  
Grade: ND Hay Band 3  
Type: Permanent  
Salary: **£100,000 - £104,999**  
Salary Ceiling: 132612

Kevin Power  
[Kevin.Power@richmondandwandsworth.gov.uk](mailto:Kevin.Power@richmondandwandsworth.gov.uk)  
Deputy Director of Environment & Community Services  
ECS - Senior Management  
Environment and Community Services Directorate  
Grade: ND Hay Band 3  
Type: Permanent  
Salary: **£145,000 - £149,999**  
Salary Ceiling: 132612

Dawn Warwick

[Dawn.Warwick@richmondandwandsworth.gov.uk](mailto:Dawn.Warwick@richmondandwandsworth.gov.uk)

Director of Children Services

CSD - Childrens Directorate

Children Services Directorate

Grade: ND Hay Band 2

Type: Permanent

Salary: **£180,000 - £184,999**

Salary Ceiling: 178815

John Johnson

[John.Johnson@richmondandwandsworth.gov.uk](mailto:John.Johnson@richmondandwandsworth.gov.uk)

Deputy Director of Children's Services

CSD - Childrens Directorate

Children Services Directorate

Grade: ND Hay Band 2

Type: Permanent

Salary: **£155,000 - £159,999**

Salary Ceiling: 178815

John Johnson  
[John.Johnson@richmondandwandsworth.gov.uk](mailto:John.Johnson@richmondandwandsworth.gov.uk)  
Deputy Director of Children's Services  
CSD - Childrens Directorate  
Children Services Directorate  
Grade: ND Hay Band 2  
Type: Permanent  
Salary: **£155,000 - £159,999**  
Salary Ceiling: 178815

Michele Harris  
[Michele.Harris@richmondandwandsworth.gov.uk](mailto:Michele.Harris@richmondandwandsworth.gov.uk)  
Assistant Director of Children's Services (Children and Families)  
CSD - Childrens Directorate  
Children Services Directorate  
Grade: ND Hay Band 3  
Type: Permanent  
Salary: **£115,500 - £119,999**  
Salary Ceiling: 132612

Liz Rayment-Pickard  
[Liz.RaymentPickard@richmondandwandsworth.gov.uk](mailto:Liz.RaymentPickard@richmondandwandsworth.gov.uk)  
Assistant Director of Children's Services (Educ, Performance and Planning)  
CSD - Childrens Directorate  
Children Services Directorate  
Grade: ND Hay Band 3  
Type: Fixed Term  
Salary: **£110,000 - £114,999**  
Salary Ceiling: 132612

Rachel Egan  
[Rachel.Egan@richmondandwandsworth.gov.uk](mailto:Rachel.Egan@richmondandwandsworth.gov.uk)  
Assistant Director of Early Help  
CSD - Childrens Directorate  
Children Services Directorate  
Grade: ND Hay Band 3  
Type: Permanent  
Salary: **£70,000 - £74,999**  
Salary Ceiling: 132612

Liz Bruce  
[Liz.Bruce@richmondandwandsworth.gov.uk](mailto:Liz.Bruce@richmondandwandsworth.gov.uk)  
Director of Adult Social Services  
ASD - Senior Management  
Adult Social Services Directorate  
Grade: ND Hay Band 2  
Type: Permanent  
Salary: **£170,000 - £174,999**  
Salary Ceiling: 178815

Jeremy DeSouza  
[Jeremy.DeSouza@richmondandwandsworth.gov.uk](mailto:Jeremy.DeSouza@richmondandwandsworth.gov.uk)  
Assistant Director - Business Resources  
ASD - Senior Management  
Adult Social Services Directorate  
Grade: ND Hay Band 3  
Type: Permanent  
Salary: **£105,000 - £109,999**  
Salary Ceiling: 132612

Derek Oliver  
[Derek.Oliver@richmondandwandsworth.gov.uk](mailto:Derek.Oliver@richmondandwandsworth.gov.uk)  
Assistant Director - Commissioning and Quality Standards  
ASD - Senior Management  
Adult Social Services Directorate  
Grade: ND Hay Band 3  
Type: Permanent  
Salary: **£120,000 - £124,999**  
Salary Ceiling: 132612

Kerry Stevens  
[Kerry.Stevens@richmondandwandsworth.gov.uk](mailto:Kerry.Stevens@richmondandwandsworth.gov.uk)  
Assistant Director - Operations  
ASD - Senior Management  
Adult Social Services Directorate  
Grade: ND Hay Band 3  
Type: Permanent  
Salary: **£125,000 - £129,999**  
Salary Ceiling: 132612