

Brightside

December 2025

The magazine of Wandsworth Council



Merry
Christmas



Delivered to 159,000 homes – Balham Battersea Earlsfield Furzedown
Putney Roehampton Southfields Tooting Wandsworth



Dolly Parton is giving
all Wandsworth
children aged
under 5
a free book
every month



Inspire a love of reading
and sign up today



Scan the QR code to register
your child or learn more at
wandsworth.gov.uk/imagination-library





Simon Hogg, Sam Cotton, Interim CEO of Battersea Power Station and Tom Copley, Deputy Mayor of London for Housing and Residential Development

New council homes at Battersea Power Station

Wandsworth Council and Battersea Power Station are joining forces to deliver 200 brand-new council homes next to one of London's most iconic landmarks.

Subject to planning and funding approvals, building work would start next year, with the first people expected to move in in 2029.

This accelerates the council's Homes for Wandsworth programme to build 1,000 new homes for social rent, creating mixed, balanced communities in the borough.

The new council homes and landscaped public

walkways, with a mix of local businesses, cafes and cultural spaces, would be built on a plot to the east of the Grade II* listed building. The council is partnering with the GLA and Battersea Power Station to provide these well-designed homes for local families at social rent levels.

“ Partnership working is vital to accelerate the delivery of more high-quality council homes.

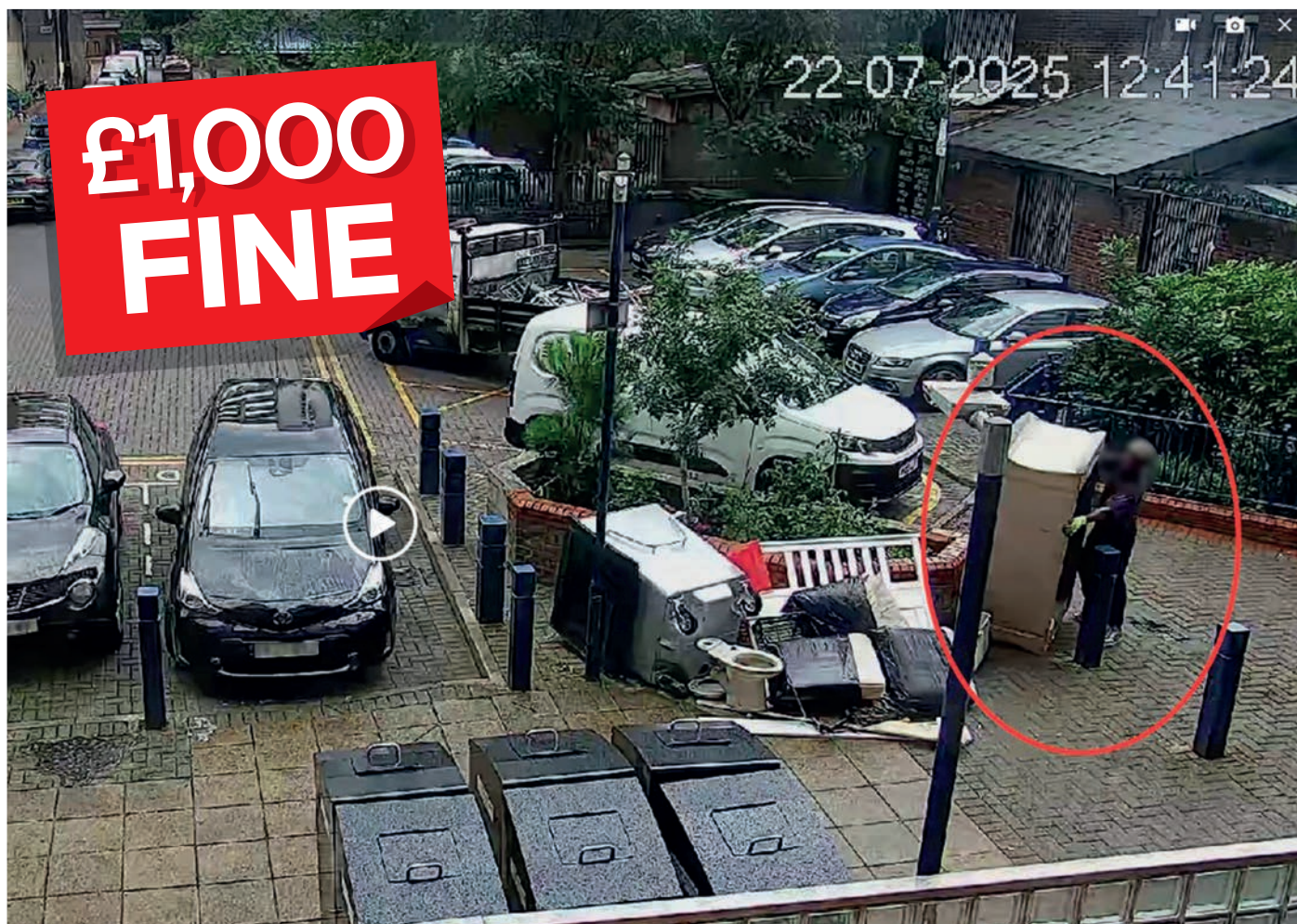
Sadiq Khan, Mayor of London

“ This is a key step in our mission to make Wandsworth a fairer borough, where everyone can share the benefits of growth.

Simon Hogg, Leader of Wandsworth Council

“ Wandsworth is stepping up to the challenge... genuinely affordable homes will be delivered. ”

Steve Reed, Secretary of State for Housing



Fines for fly-tippers

A waste disposal company which illegally dumped a mound of household items including a fridge-freezer and a toilet in Battersea has been slapped with a £1,000 fine.

Thanks to our Waste Enforcement Team, the culprits were identified by the signage on their van and its vehicle registration.

Paul White, Cabinet Member for Environment, said:

“Through our Cleaner Borough Plan, we have ramped up CCTV monitoring in hotspot areas to catch fly-tippers red-handed and work to make Wandsworth a cleaner and more pleasant place to live.”

Our CCTV Team monitors a network of more than 1,200 CCTV cameras across the borough. Additional funding has been secured to significantly boost the borough’s CCTV monitoring capabilities, with extended monitoring hours and brand-new mobile CCTV vans which will keep the borough safer.

Lavender police desk to stay open

We have welcomed confirmation that Lavender Hill Police Station’s front counter will remain open, following public concern about

the Metropolitan Police’s plans to reduce the number of 24-hour front counters across London.

Graeme Henderson, Cabinet Member for Health, said: “This is good news for Wandsworth. We’ve been clear from the start that our borough must not lose its front counter. Lavender Hill plays a vital role in keeping our community safe and making sure residents can speak to an officer face to face.

“We’ll continue working closely with the Met to ensure this commitment is kept and that local policing remains visible, accessible, and properly supported.”

Padel is included in Access for All offers



Experience what the borough has to offer

In just nine months, more than 10,000 eligible people, including those on a range of means-tested benefits, have signed up for Access for All – Britain’s best concession scheme.

You can get 50% to 100% discounts on key council services and local activities, to ensure everyone can access the opportunities which make Wandsworth so special.

Offers include:

- Free or discounted use of the borough’s leisure centres
- Free school uniform vouchers of up to £170 for students entering Reception or Year 7
- Concession memberships with micro-mobility providers Lime, Forest and Voi, providing half-price discounts for e-scooters, £3 tickets for LBOC events, and 50% off e-bike rides

- Baby Boxes for new parents, providing them with essential goods to support their baby’s early years and linking them into the council’s Family Hub services

How to sign up?

It’s quick and easy to sign up to become an Access for All member.

Proof of eligibility will be required to apply for a membership card, but then members only need to show their membership card when accessing any of the offers. Visit [wandsworth.gov.uk/access-for-all](https://www.wandsworth.gov.uk/access-for-all)

Partner with the scheme

If you are a local business and have an offer you would like to add, or an event or product we could partner with you on, email accessforall@wandsworth.gov.uk



Our Decade of Renewal

A major package of improvements is underway all over the borough as part of Our Decade of Renewal programme – boosted by a levy on property developers.

Angela Ireland, Cabinet Member for Finance, said “Wandsworth has some of the highest financial reserves and lowest levels of debt in London, allowing us to deliver the lowest council tax in the country and invest in what matters most to residents – cleaner streets, safer neighbourhoods and a stronger community.

“Thanks to the money the council collects from property developers we continue to invest more in our schools, transport network, sporting, leisure and community facilities.”



- New **community safety projects** paid for by our Neighbourhood Renewal Fund, include more CCTV monitoring and new rapidly-deployable mobile CCTV cars.
- Busy **Wandsworth Town station** is set for a much-needed upgrade with an accessible second entrance and lifts to platforms. We’ve developed the £20m improvements package in partnership with Network Rail and the Department for Transport to improve access for people with disabilities and mobility issues.



Work on the Falcon Road underpass



Before - Falcon Road underpass

- Battersea residents are getting a state-of-the-art **health centre**, due to open in early 2026 to serve the Thessaly Road area. Wandsworth has worked in partnership with the local NHS, using funding from property developers to improve community facilities.



Coming soon - Battersea health centre

- The new-look **Falcon Road rail bridge** has had a colourful makeover as part of our year as London Borough of Culture, using funding from developers. The winning design team was chosen following engagement with local people and more than a thousand survey responses.

Several other borough railway bridges will also get upgrades, including Balham, Battersea, Tooting and Wandsworth Town. Work will include upgraded lighting, jetwashing, public art and pigeon-proofing.

- We have doubled our investment in **roads and pavements**. By next March we will have resurfaced 136,000 square metres of roads and 60,000 square metres of pavements, and repaired 1,140 potholes. If you report dangerous potholes, broken street signs or graffiti we will fix it in 7 days.



Spotlight on Balham

We're working on plans for Balham – and we want your input.

The Balham Forum wants to hear what you love about living or working in Balham Town Centre so we can build on these strengths, as well as hearing your ideas about what could be even better.

We've already made a lot of improvements, including:

- **New lights under the railway bridge**
- **More CCTV coverage**
- **More frequent street cleaning and jet washing**

Upcoming work includes revamps of local playgrounds, Balham Library and the pedestrian tunnels in Bedford Hill.

As a listening council, we're giving everyone the opportunity to share their views about Balham by commenting on our website. We will also talk to local businesses and community groups, and listen to expert witnesses. A panel of councillors and officers will then review what we've heard, and use it to identify further actions for Balham. We'll also consider how we can use what we have learnt to look at other town centres in the borough.



The group will focus on

- Crime and safety
- Clean streets
- Transport
- Arts & Culture
- Important public sites

How to take part

Visit our dedicated Balham Forum interactive website to find out more, take our online survey and drop a pin in the map with your thoughts and ideas.

We will also be holding public meetings where you can quiz council officers. Keep an eye on the website for details of the next one.



balhamforum.commonplace.is

Free Christmas tree recycling is back

Starting from Monday 5 January, put your real Christmas tree just outside your home on your usual collection day and we'll collect it the same day. You can also bring it to a free drop-off point from Friday 26 December.

We've expanded the number of drop-off points this year due to popular demand.

Please do not leave trees in green spaces, commons or in parks outside of these drop-off points.

The following drop-off points will be open from Boxing Day:

- **Acanthus Road, Battersea**, parking bays at the end of the road next to Grayshott playground, SW11 5TY
- **Battersea Park**, Albert Bridge Car Park, Albert Bridge Road, SW11 4NU
- **Battersea Park**, Chelsea Gate Car Park, Carriage Drive North, SW11 4NJ
- **Cobham Close**, next to Pembury Court, SW11 6HR
- **Cortis Road**, in the shops' car park, SW15 3BD
- **Tooting Common**, Dr Johnson Car Park, SW17 8JU
- **Tooting Leisure Centre Car Park**, Greaves Place, SW17 ONE
- **Nuffield Health Car Park**, Burr Road, SW18 4SQ
- **Household Waste and Recycling Centre**, Smugglers Way, Wandsworth. Book an appointment at wrwa.gov.uk
- **Roehampton Youth Club** Car Park, Holybourne Avenue, SW15 4JD

Here are some handy tips if you're using the collection service:

- Put your tree out on your usual collection day next to your rubbish and recycling bags in your front garden if possible, to avoid blocking the pavement.
- If your front door opens directly onto the street, please put your tree out on the pavement just outside your front door. If you live in a block of flats, leave your tree near to your rubbish and recycling bins store
- Real trees only – no artificial ones – and please remove decorations and pots
- We use a different vehicle to collect real Christmas trees, so don't worry if it's not collected at the same time as your rubbish and recycling

Over Christmas and New Year, some household rubbish and recycling collections will be a day later than normal.

Normal collection day	Revised collection day
Monday 22 December	No change
Tuesday 23 December	No change
Wednesday 24 December	No change
Thursday 25 December	Friday 26 December
Friday 26 December	Saturday 27 December
Monday 29 December	No change
Tuesday 30 December	No change
Wednesday 31 December	No change
Thursday 1 January	Friday 2 January
Friday 2 January	Saturday 3 January
Monday 5 January	Service returns to normal



Our Cleaner Borough Plan

More than 8,200 tonnes of extra recycling have been collected this year thanks to residents' hard work and the Cleaner Borough Plan.

The ambitious plan aims to improve waste services and make it easier and simpler to recycle.

Improvements include:

- Guaranteed weekly rubbish and recycling collections
- Two free bulky waste collections a year per household
- Weekly food waste collections
- Free recycling sacks and food caddy liners
- Two collections per week for flats above shops in busy town centres
- Twice monthly Mega Skip Days in more areas
- Additional cleaning on high streets
- 50 new litter bins in areas chosen by residents

Find out more about waste and recycling in Wandsworth at wandsworth.gov.uk/recycle

“ The Cleaner Borough Plan reflects our commitment to listening to residents and delivering high-quality waste services that improve people's lives. I want to thank everyone who has recycled more. ”

Paul White, Cabinet Member for Environment







Blooming lovely!

Congratulations to all the winners of our Wandsworth in Bloom Awards.

The competition, part of Wandsworth's year as London Borough of Culture, ran over the summer to inspire and celebrate the borough's gardeners. The competition is a celebration of community, creativity and care for our environment.

The winners were:

Best Allotment Plot: Guy Dimond and Susan Low, Beatrix Potter Allotments

Best Business in Bloom: WIP Space Studios

Best Balcony or Container Garden: Emma Allden

Best Community Food Growing Site: St Micheals Foodbank Community Garden

Best Community Facility Garden: Graveney Upper School, Tooting

Best Front Garden: Jan Parker

Best in Show: Bertice Pompe

People's Choice (voted on during the awards ceremony by the attendees): Age UK Wandsworth

London Borough of Culture Most Vibrant: St Micheals Foodbank Community Garden

Wandsworth in Bloom was supported by headline sponsor Krinkels UK, with prizes provided by local garden centre Neal's Nurseries.



Graveney Upper School, Tooting



Best Front Garden



Best Balcony



St Micheals Foodbank Community Garden





High street lights switched on in November included Northcote Road and Battersea High Street (below)

Christmas lights switch on events lighting up your local high street

December 2, 6.30pm–8pm, Carols in the Square in Battersea Square

December 3, mini Christmas market and lights switch on in Southfields

December 4, 4pm–8pm, outdoor market and lights switch on in Church Lane, Tooting

December 5, 4pm–5pm, lights switch-on and carols in Bellevue Road

December 5, 3pm–5.30pm, lights switch on in Furzedown

December 6, from 10am, Christmas Festival and lights switch-on in Southside, Wandsworth

December 9, 3.30pm–6pm, Winter Warmer. singing, activities and refreshments in York Gardens Library

wandsworth.gov.uk/christmas-events-2025





All the winners

Our local heroes

Congratulations to everyone who was nominated for a 2025 Wandsworth Civic Award. Here are our winners.

Bravery Award

James Cowdrey drew on his lived experience of suicide to help someone in crisis on the tracks at Wandsworth Town railway station last year.

Runner up: **Adam Razvi and Pavlo Protsenko**

Charity Champion

Daniel Brandon combines regular volunteering at Tooting Community Kitchen and local charity Little Village with a full-time job.

Runners Up: **Asli Dogan Aslan, John Marsh**

Charity Champion (Creative Contribution)

As part of the Furzedown Annual Charity Events (FACE) fundraising group, **Alan Feast** has been crucial in supporting local good causes.

Runners Up: **Lucy Barratt, Urvashi Patel MBE**

Charity Champion (Long Service)

Lee Marshall was one of the co-founders of the influential LGBTQ+ rights charity Stonewall in the 1980s, and has dedicated much of his life to standing up for equality at a local, national, and global level.

Runner Up: **Nisar Bawany, Winston and Vivien Belgrave**



Youth Mayor Kwasi Agyekum-Koranchie and Deputy Youth Mayor Sophia Dyson handed over the Young Person of the Year prize

Charity Champion (Volunteers)

Prabha Mistry – known as Pam – is a key part of the four intergenerational Sparkle community centres across Wandsworth.

Runners Up: **Philip Beddows, Wandsworth Food Bank Team**

Community Champion

Sarah Rackham supports a wide range of local community groups and is a director of mental health charity Sound Minds and chair of the Voluntary Sector Forum under the Wandsworth Care Alliance.

Runners Up: **Frederica Huggins, Orleen McIntosh, Joseph Lagden, Val Crolle**



Community Champion (Community Building)

The Lonely Girls Club has gone from strength to strength, thanks to **Holly Cooke's** passion for creating safe and inclusive spaces for women to meet, try new activities, build friendships, and beat loneliness.

Runners Up: **Nicola Pattinson, Stefani Cotardo and Ilenia Goffredo**

Community Champion (Supporting People)

Pamela Harris has run the weekly 60+ Cafe on the Alton Estate for more than a decade and supports the Roehampton Trust, the Roehampton Voice newsletter, and Our Roehampton.

Fozia Riaz's Happy Homes community organisation helps support local people through social interaction, practical help with form-filling or digital systems, creativity, or even learning how to live more sustainably.

Runner Up: **Javed Bhunnoo**

Cultural Champion

Sahana Gero founded the World Heart Beat Academy in 2009 and has overseen its growth to a base in Kimber Road and a cultural hub in Nine Elms.

Runners Up: **Colleen Samuel, Tiah Algalarrondo, Ruth Essel**

Environmental Hero

Janneke Diemel launched the charity Critical Support during the Covid-19 pandemic to help tackle food poverty. Four tonnes of food that would otherwise go to waste is collected every week benefitting more than 10,000 people.

Runners Up: **Benedict Cuddon, Serena Potter**

Young Person of the Year

Lamees Bazuti has overcome health challenges to advocate for the Wandsworth Youth Bus – a mobile youth centre on the road six days a week – as well as helping design the new Block A youth space in Roehampton.

Runner Up – **Kyla Nicholas**



Miriam Brine from Wandsworth Music provided the entertainment

Krinkels UK is proud to support Wandsworth in Bloom and to help keep the borough's parks and green spaces looking their best.

Our teams take great pride in maintaining safe, welcoming environments for everyone to enjoy throughout the year.



**DON'T
LOSE
YOUR
VOTE**



On 7 May 2026
all 58 Wandsworth Council
seats will be up for election
Make sure you are ready

- Respond to your household voter registration form, which you should have received in the post or by email. If you haven't responded yet, our canvassers will visit your address in October to help make sure you're registered to vote.
- We have contacted voters who need to re-apply for their postal vote. If this is you, reapply as soon as possible.
- When you vote you will need photo ID. If you don't have it, you can apply for a free Voter Certificate.

Find out more at
wandsworth.gov.uk/vote





Alton estate says Yes

In London's biggest regeneration ballot, residents living on Roehampton's Alton estate have voted overwhelmingly in favour of Wandsworth Council's proposals for new homes and better community facilities.

Eighty-two per cent of voters gave a thumbs up to plans for up to 650 new homes and major repairs to some blocks, together with a new library, GP surgeries, youth facilities, Family Hub, improved shops, green spaces and access around the estate.

The ballot follows more than a year of improvements across the estate delivered by the council as part of the Alton Renewal Plan. These include the new Roehampton Family Hub, more community events including the council's annual jobs fair, outdoor murals designed and painted by residents, the expansion of the community mini-bus service and resurfaced roads and pavements.

“This is a momentous day for the Alton. For too many years this estate has suffered from lack of investment, but now we have a clear decision from the people who live here that they want real change and we're committed to delivering that.”

Aydin Dikerdem, Cabinet Member for Housing

Angus, a resident in Alton East said:

“I voted yes because the long overdue proposals to improve the Alton much better reflect the needs of the residents of the estate.”

Mick, a resident living in Alton's Tangley Grove, said:

“I've lived on the Alton for over 50 years, and I voted yes because something needs to change.”



Find a Safe Haven

John Busuioc and Cabinet Member for Health and Community Safety Graeme Henderson

We've joined forces with the Safer Business Network to create Safe Havens. If anyone feels intimidated, harassed, unwell or just in need of assistance, staff at the Safe Havens can help by providing a temporary place to shelter, calling a friend or a taxi, offering a drink of water, charging a phone or calling emergency services.

Venues signing up so far include libraries, Battersea Arts Centre, restaurants including MEATliquor and Oddono's in Battersea and pubs including the King's Head, Roehampton and the Prince of Wales, Putney.

Participating venues display the Safe Haven logo inside their windows or on a noticeboard.

John Busuioc, deputy manager of the King's Head, said: "We are proud to join the Safe Haven scheme and welcome its positive impact on our community. Our participation demonstrates a clear commitment to work in partnership with the council keeping people safe, supported, and connected when they need it most."

We have doubled our investment in domestic abuse prevention including the monthly Safe Space outside Clapham Junction station, One Stop Shops and therapeutic support and dedicated staff to engage with victim-survivors and communities.

Book an NHS HEALTH CHECK at a local pharmacy

GET
CHECKED
FEEL GREAT



Helping you prevent
diabetes
heart disease
kidney disease
stroke & dementia



Age Well Together

Age UK Wandsworth's Age Well Together service offers older people help to keep them independent and connected with their community.

Get support after a stay in hospital, help with online shopping, practical jobs around the house and telephone calls and visits from befrienders.

To find out more email
awt@ageukewandsworth.org.uk



Get support to live your best life

Wandsworth's Adult Social Care team are pulling out all the stops to link people up with the support they need, with minimal delay or fuss.

In September the team received a 'good' rating from the Care Quality Commission for their work to keep people as healthy and independent as possible to reduce their need for care further down the line.

The report praised the team's use of technology to reduce waiting times and improve service delivery, with two new schemes just launched.

The power of AI is being harnessed to provide support to unpaid carers. Across Wandsworth, around 18,000 people provide unpaid care for their partner, family,



friend or a neighbour, but many delay or are hesitant in seeking help until they reach crisis point.

This new 3 month pilot project is a 24/7 online voice and text service will offer

- 24/7 access to support
- Simple, user-friendly interactions to collect information about carers' needs
- Tailored recommendations for local resources and support and carers assessments
- Seamless escalation to council staff when a human response is required

Carers will still have the option of getting advice directly from a human if they wish.

Visit wandsworth.gov.uk/carers-self-assessment

Keep warm and well this winter

Being prepared for cold weather is important to make sure you stay fit and healthy – especially if you are older or have a long-term health condition. There are lots of things you can do to help yourself and those around you stay well in winter.

Top tips to stay warm and well

- Heat rooms that you regularly use to at least 18°C
- Don't let your home get cold, but do open windows regularly to prevent damp and mould
- Keep moving – stretch, walk around, or do light chores
- Wear multiple layers of thin clothing and wear shoes with good grip when you go outside to avoid slips and falls
- Eat well and stay hydrated
- Check the weather forecast and the news. Stock up on food and medication before bad weather
- Stay connected with friends and family

Winter Vaccinations

Flu and COVID-19 spread more easily in winter months and can cause severe illness, particularly among children, older people, pregnant women and those with a serious health condition. Getting vaccinated is one of the most effective ways to protect yourself and others. Find out if you're eligible for a free Flu or COVID-19 vaccination and how you can get them on the NHS website. [nhs.uk/live-well/seasonal-health/keep-warm-keep-well](https://www.nhs.uk/live-well/seasonal-health/keep-warm-keep-well)

Get on board the Health Bus

Wandsworth Council's health bus will be visiting neighbourhoods across Wandsworth over the winter months. Staffed by friendly health professionals, including a local pharmacist, free help includes winter jabs for those eligible, stop smoking support and NHS health checks. No need for an appointment, feel free to stop by anytime. Find out where it will be at [wandsworth.gov.uk/health-bus](https://www.wandsworth.gov.uk/health-bus)

Practical and financial support

People in financial difficulty may find it more difficult to heat their homes, but there are grants, benefits and sources of advice available to help you make your home more energy efficient, improve your heating or help manage energy bills.

Contact the Wandsworth Cost of Living Hub on **020 8871 6000** to find the support you need.

Call South West London Energy Advice Partnership (SWLEAP) on **0800 086 2706** for free, impartial energy advice.

Find a community space for warmth, company and support at [wandsworth.gov.uk/community-spaces](https://www.wandsworth.gov.uk/community-spaces)

Get free advice and home visits from the Winter Warmth Home Service. Call **0800 118 23 27**

Sign up to the Priority Services Register for extra, individualised support from energy and water suppliers. Visit theapsr.co.uk



Library celebrates its centenary

One of Wandsworth's most treasured cultural landmarks, Battersea Reference Library, has celebrated its 100th birthday.

The library was built to provide a calm, dedicated space for research and reflection. A century later, it continues to serve that purpose but now is bang up to date with digital resources, Wi-Fi, and eBooks.

The building is a rare example of Arts and Crafts style architecture in south London, designed by Henry Hyams. The council plans to restore the library's historic glass roof.

Judi Gasser, Cabinet Member for Children said: "This centenary is not just about looking back, it's about looking forward. Through our Libraries First! Strategy, we're investing in our libraries to make them more inclusive, welcoming and responsive to the needs of our communities."



Libraries First! will deliver

- The Dolly Parton Imagination Library, which provides free books to children under five across the borough
- Extended opening hours at Roehampton Library, Battersea Park Library and York Gardens Library
- Refurbished children's libraries at Balham and Battersea Park
- Improved study spaces and upgraded IT facilities
- Expanded eBook and audiobook access and universal library membership for children
- Free digital skills training and wireless printing
- More arts and cultural events, exhibitions, and support for local artists, especially during our year as London Borough of Culture 2025

Remembering a legend

Music legend Bob Marley has been honoured with a Wandsworth Green plaque commemorating his visits to the borough.

The plaque pays tribute to the time the Reggae star spent playing football with band members in Battersea Park and joins another Green Plaque commemorating the first FA Rules game which was played in Battersea Park in 1864.

It was installed in partnership with Nubian Jak Community Trust and unveiled on October 25, as part of Wandsworth's year as London Borough of Culture, with Jamaican High Commissioner, HE Alexander Williams in attendance.

Wandsworth's Green Plaque scheme honours notable people, places and events in the borough that are not covered by the English Heritage Blue Plaque Scheme. Wandsworth Council puts up green plaques every year, and there are 17 around the borough celebrating subjects as diverse as Wombles author Elizabeth Beresford, the Festival of Britain Gardens and the recording studio used by The Who.



This London Borough of Culture year, we are installing 12 new Green Plaques, generously funded by the National Heritage Lottery Fund. As well as Bob Marley, other new plaques include:

- Frances Margaret Taylor, religious sister and founder of the Poor Servants of the Mother of God
- Chad Varah, founder of the Samaritans
- Paul Martin, photographer, once described as the 'Dickens of the Lens'
- Tooting Bec Hospital, and the many people who lived and worked on site

Find out more [wandsworth.gov.uk/the-green-plaque-scheme](https://www.wandsworth.gov.uk/the-green-plaque-scheme)



A year to remember

We are nine months into Welcome to Wandsworth – our year as London Borough of Culture – and it's been an incredible journey, with loads more still to come.

In the first six months alone, our events had 95,000 visitors and involved 2,000 artists and 400 volunteers. We've brought communities together from all backgrounds and ages to celebrate creativity and culture, from mass dance performances to powerful displays of local talent.

And at the heart of this year's programme is our commitment to harness the power of culture to improve health, wellbeing, and connection.

Keep an eye on our website for upcoming events, including a two-week takeover of Battersea Arts Centre, more in our year-long celebration of Black history and culture, weekly episodes of our radio drama *The Wandsworth Way*, a series of podcasts from BBC Radio presenter Max Reinhardt on Wandsworth's diverse communities, plus a spectacular closing ceremony in March.

welcometowandsworth.com



WELCOME TO WANDSWORTH

London Borough of Culture



Photos clockwise: The first-ever Country on the Common festival was a huge success. The Liberty Festival gave audiences the cream of disability arts. Urban Flow filled the Alton Estate with colour, dance and joy Local faces filled the giant Picadilly Circus screen



Serving up a tasty dish

TV chef Ainsley Harriott launched Wandsworth Council's African Caribbean Food Month in October, with around 300 people turning up to hear him talk about how his Caribbean heritage shaped his passion for cooking.

Local people are also asked to submit their favourite family recipes to be immortalised in our African Caribbean Heritage Recipe Book. There are submission boxes in libraries and the Town Hall Marble Hall reception.

Wandsworth is London Borough of Culture 2025 and African Caribbean Food Month was part of the council's Black History 365 programme.



Find out about upcoming Black History 365 events on [welcometowandsworth.com](https://www.welcometowandsworth.com)

Thanks to our crews & Wandsworth residents, an extra 8,200 tonnes of recycling have been collected, supporting the Cleaner Borough Plan!

In 2025, together we have:

- Recycled more than 4,270 tonnes of food since the service launched
- Recycled over 174 tonnes of Christmas trees in 2025
- Responsibly disposed of over 80,000 bulky items

We're proud of what we've achieved together and look forward to building on this success in 2026.

*Wishing everyone a happy, sustainable festive season
From the Serco Wandsworth team!*

serco

WHAT'S ON?

A man with a wide smile, wearing a cap that says 'TORS RACING TEAM' and several colorful, knitted gloves, points directly at the camera. He is holding onto a brick wall. The background is a dark, festive scene with stars, snowflakes, and pine trees.

A Merry Misrule

Until December 24

Audiences aged 3+ will be taken on an immersive journey to tackle unruly festive folklore characters that have run amok and restore peace and joy back to the festive season.

Battersea Arts Centre
bac.org.uk

The Railway Children

December 4-6

The classic tale brought to life by young actors aged 8-18

Putney Arts Theatre • putneyartstheatre.org.uk

St Mary Magdalene's Christmas Tree Festival

December 6, 4pm

Stroll through the Victorian church with a glass of mulled wine and a mince pie, surrounded by a forest of sparkling Christmas trees. Each tree is sponsored by a local business, a charity, a local family or group, plus fun kids' activities, refreshments and stalls.

smmwandsworth.org.uk

Santa's Grotto

December 6-24

Share your Christmas wish with Santa and have your name added to the nice list. All children who visit Santa's Grotto will leave with a gift from the man himself.

Battersea Arts Centre • bac.org.uk



We are Somebody

Until January 29

A pioneering exhibition shining a spotlight on communities who have shaped Wandsworth's cultural landscape.

Wandsworth Town Library

The Music of Tooting Granada

December 19

Guided by local historian Geoff Simmonds, discover the stars who once performed at this iconic venue.

Summerstown182.wordpress.com



Christmas Coffee Morning with Extras

December 6, 10.30am-noon

Enjoy a cuppa and browse stalls. Free entry.

Earlsfield Baptist Church

Peter Pan-To

December 10-21

Join Peter Pan, Wendy, Tinkerbell, and the Lost Boys as they soar into Neverland this festive season. But beware! Captain Hook and his pesky pirates are up to no good, and with a ticking crocodile hot on his heels, the stage is set for a battle of good versus mischief!

Putney Arts Theatre • putneyartstheatre.org.uk



Season of the Song: Christmas Community Concert

December 9

Carols and festive classics from World Heart Beat's very own line-up of exciting talent. Refreshments will be served, including mince pies, mulled wine and hot chocolate.

World Heart Beat, Nine Elms
worldheartbeat.org

Christmas Day Lunch for the Elderly

The Rotary Club of Battersea holds a Christmas Day lunch in a marquee in Battersea Park for older people who would otherwise be alone. It is completely free, so donations are welcome.

rotarychristmasday.org



JOIN US FOR OUR

CHRISTMAS FAIR






Friends of

Putney School of Art & Design






OVER 30 ARTS & CRAFT STALLS BY LOCAL ARTISTS

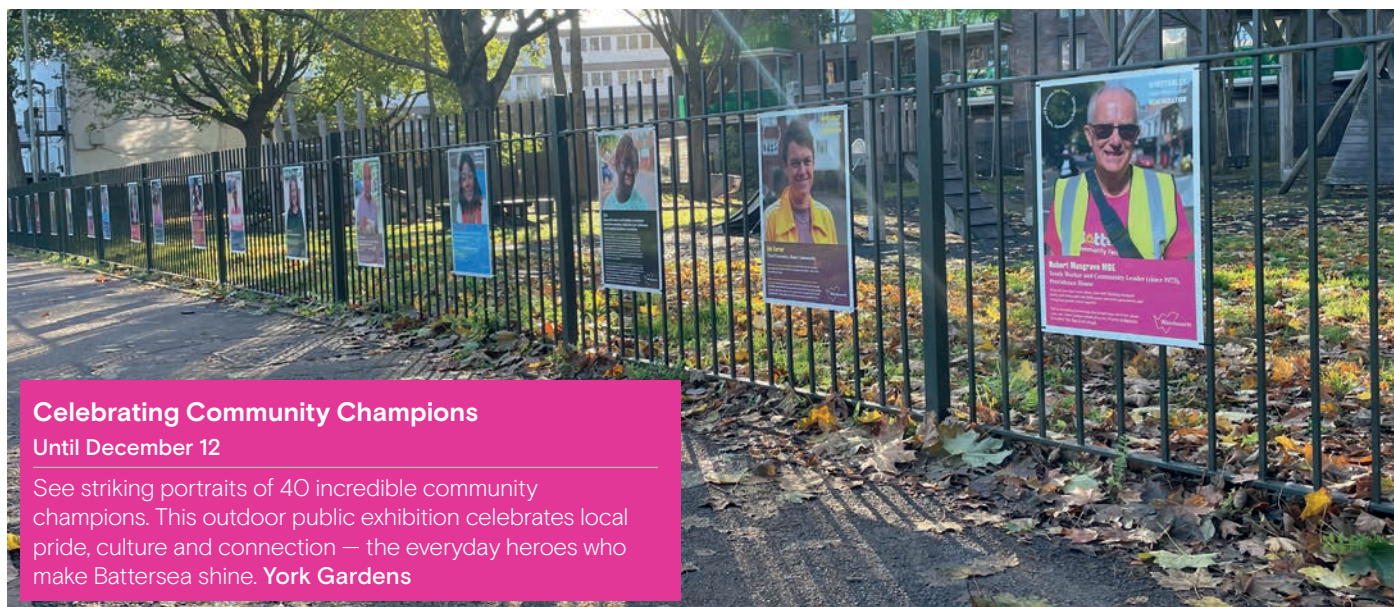
REFRESHMENTS • LIVE MUSIC

**SUNDAY
7TH
DECEMBER**

**PUTNEY SCHOOL
OF ART & DESIGN**
OXFORD ROAD, SW15 2LQ

**10AM
TO
5PM**

WWW.PSADFRIENDS.ORG.UK



Celebrating Community Champions

Until December 12

See striking portraits of 40 incredible community champions. This outdoor public exhibition celebrates local pride, culture and connection — the everyday heroes who make Battersea shine. **York Gardens**

Katherine Low Settlement Charity Carol Concert

December 9, 7pm

Music from local choirs, festive readings, and appearances from special guest readers, including Lady Frederick Windsor, Sophia Money-Coutts, and John Bercow, to support KLS's work with older people, young families, refugee communities and newly arrived adults learning English.

Tickets are £25, including mulled wine and mince pies. Search Katherine Low Settlement on Eventbrite
St Mary's Church, Battersea,

Christmas at the ROSE

December 9

Santa's grotto is open from 5pm–7pm, with a free gift for every child. At 7pm enjoy the pantomime Dick Whittington – free of charge and no ticket required. Plus mulled wine, mince pies and other festive treats.

ROSE Community Clubroom, Ascalon Street, Nine Elms
wandsworth.gov.uk/rose-clubroom

RUNher Community

Mondays, 6pm–7pm

Join a safe, staff-led women's only community run club in Battersea Park
<https://grco.de/bgKxrZ>



South West London Recovery Cafe

Monday to Friday, 6pm to 11pm

Weekends and bank holidays 12pm–11pm

Visit a free, safe and welcoming space for adults aged 18+ who are struggling with their mental health. Staff will listen and support you to reduce your immediate crisis and anxiety. No appointment necessary.

966 Garratt Lane, Tooting
07794 394 920

Free Employability Courses

These are offered exclusively for Wandsworth residents as part of the Winstanley and York Road regeneration. Build confidence, develop essential skills and take positive steps towards employment.

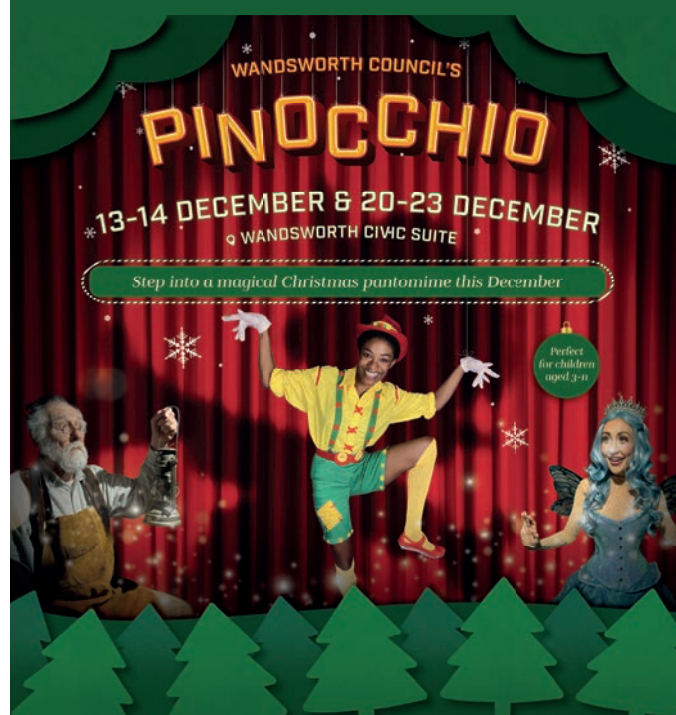
Call (020) 8871 8055 or visit
wandsworthlifelonglearning.org.uk/regeneration-plan-for-york-road-and-winstanley-estate

Pinocchio

December 13–14 and December 20–23

Follow the mischievous wooden puppet as he learns the importance of honesty, courage and friendship.

540 discounted tickets will be available via our Access for All scheme. wandsworthpanto.com



OUR BRIGHTSIDE

If you have any suggestions for articles or have a story you would like to tell us about please email:

brightside@wandsworth.gov.uk or call: Editorial (020) 8871 8902 Advertising (020) 8871 7266

We would love to hear from you. Brightside is printed on environmentally friendly paper, please recycle.

Listening to you

Getting the basics right to give you more time to live your life

Wandsworth Council's guarantee

7 rings

Call **020 8871 6000**
and a member of staff
will pick up in **7 rings***

7 days

Report graffiti, a broken
street sign or a
dangerous pothole and
we will fix it in
7 days

Every household now gets two free bulky waste collections a year – each separate collection can be up to four items such as a mattress, washing machine or furniture.

Book yours today at
[wandsworth.gov.uk/bulkywaste](https://www.wandsworth.gov.uk/bulkywaste)

020 8871 6000
hello@wandsworth.gov.uk
[wandsworth.gov.uk/listening](https://www.wandsworth.gov.uk/listening)



*Phone line open 9am–5pm, Monday to Friday, except bank holidays



Christmas tree collections from Monday 5 January

Put your real Christmas tree out for collection on your usual collection day from **Monday 5 January**. Your tree will be collected on the same day as your rubbish and recycling, but in a different vehicle.

Want to recycle your real Christmas tree before 5 January? Visit a drop-off point from Boxing Day.

Christmas and New Year collection dates

Remember, your rubbish and recycling collection day may change over the festive period due to bank holidays. See details on page 9.

Visit our website to see the list of drop-off points and some handy tips for recycling your Christmas tree.



[wandsworth.gov.uk/
christmas-trees](https://wandsworth.gov.uk/christmas-trees)

**Our Cleaner
Borough**

