

Wandsworth schools and families

JULY 2016

Headstart

Distributed through schools across the borough





Be there for a young person in Wandsworth. Become a foster carer.



and we'll be there for you.

To find out more visit [wandsworth.gov.uk/fostering](https://www.wandsworth.gov.uk/fostering)
or phone **(020) 8871 6666**



Plus
ten pages
of summer
listings
PAGE 21

What's hot for Wandsworth families

Your guide to school admissions

this month

How to apply for a school place **PAGE 6-7**

Edible Garden at St George's

A new community space **PAGE 8**

Join the sea cadets

Wandsworth is recruiting **PAGE 11**

Young leaders

Wandsworth Young Leader's Programme **PAGE 13**

Mosaic School

Official opening **PAGE 14**

Gold star for Chestnut Grove and Paddock

Winners of a national award **PAGE 16**

When to get jobs

Protect your children **PAGE 17**

Schools Heritage Competition winners

Exploring entertainment in Tooting **PAGE 18-19**



Send your comments and suggestions to
headstart@wandsworth.gov.uk

Follow us:
weekly e-newsletter wandsworth.gov.uk/24seven
facebook.com/wandsworth.council
youtube.com/WandsworthBC
twitter.com/wandbc

Tennis stars open new club

Tennis aces Andy Murray and Tim Henman joined Wandsworth Mayor Richard Field to officially open the new All England Club community sports ground in Raynes Park.

The ground will be used by young people from Wandsworth and Merton taking part in the Wimbledon Junior tennis initiative, ball boy and girl training for the Wimbledon Championships, and available to the wider community.



(L-R): Tim Henman, Mayor of Wandsworth Councillor Richard Field, Jordanne Whiley, Mayor of Merton Councillor Brenda Fraser, Jamie Murray, AELTC Chairman Philip Brook and Andy Murray.

Battersea Park Children's Zoo... who will you see?

ZOO
Battersea Park Children's Zoo

After a little break, we're open again. I'm back.

From cheeky monkeys to leaping lemurs, noisy otters to snuffling coats, who will you come face to face with?

PLUS our fun play area for kids of all ages!

Visit our website www.batterseaparkzoo.co.uk

Tel: 020 7924 5826 Battersea Park, Chelsea Bridge Gate
Battersea London SW11 4NJ

we're passionate about wildlife

Normal opening times, Summer 10am-5.30pm,
Winter 10am-4.30pm, Mon-Sun. See our web site for more details.

SMOKEFREE WANDSWORTH

Time to quit?

You can get stop smoking support without needing an appointment:

- Pop into any pharmacy in your area
- Get in touch for up to date times and locations of our drop-in clinics

Get in touch...
Freephone: 0800 389 7921
Email: stopsmoking.team@wandsworth.gov.uk
www.stopsmokingwandsworth.co.uk

TC1908/5141



Swaffield Knight School is dubbed the best

Swaffield School has received a special award for its Knight School programme.

Swaffield has been running Knight School since 2008 – and believes it is the only one in London teaching the programme. It is based on the Knights' Code of Conduct and Chivalry and it aims to raise children's confidence and self-esteem as well as promoting pride, courtesy, and respect.

The award is the first of its kind and was presented by Caroline Aston and Barbara Keene from The Knight School Foundation, which was founded by former policeman Gary Brown MBE.

A special award assembly was attended by Sir Richard Stilgoe, who was knighted in 2012 for his charity work. He told the children was it is like to really be knighted.

Caroline Aston of The Knight School Foundation said:

“ If we lost the original blueprint for Knight School all we'd have to do is go to Swaffield School because it's there, it's alive and they're simply the best. ”



Your guide to school admissions

Is your child
starting school
in 2017?
Here's how you
apply for a place

1 WHICH SCHOOL?

Spend a bit of time finding out about local schools.

Read up on the schools you're interested in. Look at their website and read their entry in the council's Choose a Wandsworth School brochure (available online at www.wandsworth.gov.uk/admissions).

Search the Ofsted website – find it on gov.uk – for official reports on the school, have a look on websites aimed at mums, such as mumsnet and nappyvalley.net to see if there's any local chatter about schools, and see if there's any open days coming up where you can visit the school and see if for yourself.

As well as results, think about things like pastoral care and extra-curricular activities. It's also worth thinking about practical matters such as how far away it is from your home – it's difficult for children to go to after-school clubs if they face a long journey late at night.

2 IS MY CHILD ELIGIBLE?

Some schools will require your child to take an entrance exam. Others will require proof of religious affiliations. People living nearer get priority. Be realistic about your chances of getting your child in.

Being in the nursery class does not mean your child will automatically get a place in that school's reception. To qualify for a sibling place, the older child must still be at the school at the start of the academic year in which the younger child will start.

3 HOW DO I APPLY?

Apply online at www.wandsworth.gov.uk/admissions. Wandsworth Council co-ordinates admissions for Wandsworth residents – including applications for schools in other boroughs and free schools.

You can choose six. Put them in order of priority. Be careful - putting fewer schools down will not increase your chances of getting your first choice, but it will make it more likely to get none of your choices. This year in Wandsworth 77 per cent of first primary school preferences were given.

Some schools require a supplementary application form - the online application system will tell you if any of your choices do.

4 WHEN WILL I GET AN OFFER?

The council prioritises all the preferences in the order set out in each school's published admission criteria, without reference to the preference order listed by parents. If more than one school can offer the place, the council will offer whichever one of those schools was listed highest by the parent.

You will be offered a primary school place in April and will need to accept or reject the offer. Don't reject the offer unless you've got a place lined up elsewhere. The school will contact you to make any further arrangement prior to the start of the autumn term.

You can appeal. Details on how to do this are at www.wandsworth.gov.uk/admissions. You can also be put on a waiting list for any school you choose.

**Primary School
admissions deadline
15 January 2017**

**Secondary School
admissions deadline
31 October 2016**



For full details, visit www.wandsworth.gov.uk/admissions

St George's pupils make the garden grow

Students from St George's School in Battersea have helped plant edible flowers and herbs for a new community garden.

The children helped experts from Edible Bus Stop to sow seeds and seedlings into larger pots which they took home to nurture. They were invited back last month to help make their young plants into the centrepiece of a community garden in Thessaly Road in time for summer.

The Edible Avenue, which also features white picket fences, sculptures and seating, was created as part of the Chelsea Fringe at Nine Elms on the South Bank festival.

The Fringe festival ended on June 12, but volunteers will continue the work and it is hoped that the garden will become a community hub and meeting place.



It's WAND-erful!

The council's Family Information Service has launched a drive to sign up more shops, services, places to eat and other facilities to join its WAND Card scheme. Wandsworth has more than a thousand youngsters on its Disabled Children's Register who are currently WAND Card holders, meaning they have complex special needs or disabilities. It gives access to special help such as fast tracking through tills, helping with shopping, offering carer concessions, providing a quiet sitting area in a café or opening at special times to carry out services such as hair cutting or shoe fitting.

To apply for a WAND card visit wandsworth.gov.uk/wandhub.



Graveney is design winner

Graveney School's new sixth form block has been named one of the two top winners of this year's Wandsworth Design Awards. The awards recognise and reward recent local building projects which make a positive contribution to the local environment and set a good example to others. The Graveney building was praised for its imaginative and contemporary design.



Students find out about construction work in Nine Elms at a jobs fair run by Wandsworth Council at South Thames College

Get a head start into the world of work

Thinking about your future and not sure what career path to take?

The Nine Elms Vauxhall Education Links programme is all about connecting local school and college students with the many career and training opportunities springing up in Nine Elms.

Local employers offer work experience placements, career taster sessions, site visits, school visits, career open days and skills workshops linked to the curriculum.

Wandsworth is also leading the way on the new London Ambitions scheme to transform careers and employment support for young people.

The programme was created by London Councils in partnership with the Mayor's Office and the London Enterprise Panel and Wandsworth is the first council to put it into practice. Major local employers on board include Battersea Power Station.

The aim is to give all Wandsworth schoolchildren at least 100 hours of work experience by the age of 16, and to completely overhaul and modernise schools careers advice. The programme will be rolled-out across borough schools over the next few months.

To find out about both schemes, talk to your schools careers advisor.

Craig Ridcot

has been doing an apprenticeship with engineering firm Skanska:

“ I did four days a week at Skanska and one day at college – so I got paid whilst studying, plus I got all the onsite experience. It gave me a massive advantage. I have stayed at the same company for seven years and am just finishing my degree now aged 23. Skanska funded my degree too.”



Brownies earn their Wandle badges

Wandsworth's brownie packs are invited to compete for a Wandle Watchers Challenge badge.

The badge has been devised by the Heritage Lottery funded Living Wandle Landscape Partnership Scheme in consultation with local Brownie packs to engage young people with their local river and enjoy all things Wandle.

The Wandle Challenge badge is available to any brownie packs in the four boroughs through which the Wandle flows. 3rd Morden brownie pack have already earned their Wandle spurs by doing a fishing taster session with the Wandle Piscators fishing club.

For more information please contact LivingWandle@wandsworth.gov.uk

Join the sea cadets

The Wandsworth Sea Cadets are recruiting new junior members.

The cadets are based at Putney Embankment and activities include sailing powered and rowing boats, canoes and dinghies plus navigation skills, football and air rifle shooting. They also contribute to Wandsworth community life in many ways, assisting at Remembrance Day parades, fetes, the Devizes to Westminster Canoe race, and occasionally helping those in difficulty on the river.

Young people in years 5 to 7 are particularly welcome. Call (020) 8789 2643 or visit the Unit at Putney Embankment (SW15 1LB on the map) on a Sunday after 10am.



Next step for Oasis Academy Putney

Laura Nike has been appointed as the Assistant Principal of **Oasis Academy Putney** and has expressed her vision for the school to be part of its local community.

“I am very keen to meet parents, and look forward to building an inclusive atmosphere based on openness and trust. I’m excited that our new school in Putney is joining an already well-established community that cares about the environment and each other.

“As a school we will be striving to establish relationships with the community by engaging in regular dialogue and listening very carefully to their concerns, needs and ideas,” she said.

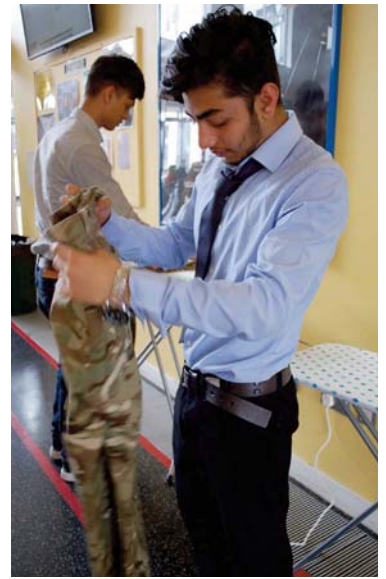
The new Academy’s building on Putney Lower



Laura with Executive Principal Di Morgan

Common is nearing completion ahead of its opening this autumn.

To find out about admissions Tel (020) 7921 4263
Email info@oasisputney.org
Visit www.oasisacademyputney.org
Follow OasisAcademyPutney on Facebook or @OasisPutney on Twitter



Soldiering students

Students at **Southfields Academy** have taken part in a passing out parade after successfully completing a practical unit in drill as part of the **Uniformed Services Course**.

The parade was held at Royal Marines Barracks Wandsworth. A team of Royal Marines Commissioned Officers, Sergeant Major Jimmy Clutton, Sergeant Simon Stroud and Sergeant Kris Foster, have also assisted in map reading, team building and a 24 hour exercise.

Principal Jacqueline Valin said: “The values of the Royal Marines exactly match our values as an Academy and for the participants this course has emphasised a sense of belonging and working together as a team. It has given them a great sense of pride in what they have achieved and deservedly so.

“The Academy is looking forward to running this course again, and building upon the relationship that it has with its neighbours at the Royal Marine London Barracks.”





All the graduates of the most recent Young Leaders programme

Training the next generation of leaders

Young people from Wandsworth schools have graduated from the council's Young Leaders programme.

The programme nurtures future community leaders, and students meet weekly to discuss hot topics including extremism, gangs, drugs, identity, abuse and health issues such as cancer and smoking.

The aim is to nurture skills including leadership, crisis management and critical thinking. Find out how young people can get involved in their community at wandsworth.gov.uk/youth

Here, one of the people taking part, Izabella Lanaj, talks about her experiences

“The Young Leaders Programme opened an array of opportunities for me. By the end of the programme, everything we learnt came together. Personally, I definitely feel a boost in my communication skills as well as team-working, listening and most importantly, leadership qualities.

Following the Young Leaders Programme, me and another Young Leader have developed, through our ‘personal cause’, a project to play our part in raising awareness of domestic abuse in Wandsworth. The Active Change



Izabella Lanaj

Foundation, who run the programme, have offered continuing support to all Young Leaders in future development of our projects.

It truly has been one of the best things I've taken part in –I made many friends on the programme and learnt about things I hadn't even thought of before. As an added bonus, it ends with a residential trip to a university!”



Spelling creates a buzz
Penwortham Primary School was proud to host the first Wandsworth Spelling Bee in May. Children from **Eveline Day, Alfarringham, Earlsfield, Falconbrook, St. Anselm's RC, Honeywell, Riversdale, Penwortham, Hotham and Sellincourt** took part. Third place was awarded to Honeywell, second place to Earlsfield, and the Spelling Bee champion was Matilda from Eveline Day. She said: "It was a great experience and I enjoyed getting to the final. It was really fun spelling the words out and I loved the prizes!" Teachers agreed that it helped to raise the profile of spelling across Years 3 and 4 and children enjoyed the competitive atmosphere.

Mental health help in schools

The Wandsworth Youth Council is to run a Mental Health Peer Education programme in secondary schools across the borough. The free programme will train up 16 young people in every participating school to be Mental Health Champions. They will learn about mental health, the warning signs and causes, treatment and support services available to young people. They will then teach other young people what they have learnt and will be there to answer questions.

The Youth Council is working in partnership with Child and Adolescent Mental Health Services (CAMHS) and has received funding from the Wandsworth Clinical Commissioning Group.

For more information or if you would like your school to take part, contact Tiffany on tiffany@participationpeople.com

Official opening of Mosaic

Mosaic Jewish Primary School, has celebrated the official opening of its new school building in Roehampton at a ceremony attended by Wandsworth mayor Richard Field.

The free school, which opened in temporary accommodation in September 2013 with just one class of four year olds, has already achieved Outstanding ratings from Ofsted and the Jewish community's school inspectorate.

It has now grown to four classes and is housed in a brand-new 14-classroom building in Roehampton Lane which includes a dedicated dance studio, design, technology and art room, an ecology garden, a kosher kitchen, a community room with a coffee shop and the very latest in a wide range of IT and other teaching resources.



Be there for a young person in Wandsworth

Ever thought of becoming a foster carer?

Suzie from Wandsworth shares her experience:

How did you get into fostering?

I always knew I wanted to be a foster carer from a very young age. I wanted to make a difference to the lives of children that needed to be shown love and support, so I thought what better way than to give back to my own community, here in Wandsworth.

How has your experience with fostering been?

I have had a wonderful experience. I have been a great advocate for many children which has been very rewarding. My supervising social worker is great at giving me advice about my role. Fostering with Wandsworth Council provides plenty of training and excellent support groups, so I never feel alone. My own daughter has been a big part in other children's lives and finds it enjoyable. She always says how proud she is of the job I do.

What would you say to someone who is considering becoming a foster carer?

Becoming a foster carer is one of the most emotionally rewarding things you can do- helping vulnerable children by nurturing them and building their self-esteem. It is the best job I have ever done, it could be yours too.

Find out more about fostering in Wandsworth at

www.wandsworth.gov.uk/fostering

Chestnut Grove and Paddock truly inclusive

Chestnut Grove in Balham and **Paddock**, a special school in Roehampton, have won first and third place respectively in a national annual award recognising work in promoting inclusivity and the growth of mutual understanding in society.

Chair of the judging panel and the Accord Coalition for Inclusive Education, which sponsors the Award, Rabbi Dr Jonathan Romain MBE, said “It is remarkable for schools in the same area to be recognised in the Award at the same time, which has never occurred before. Both schools should be championed and they display exemplary practice for others to follow.”

Chestnut Grove Academy drew widespread praise from the judging panel for providing a variety of activities and teaching that promoted a culture of tolerance and explored, in detail, a range of contentious religious and social issues such as, Islamophobia, extremism and sexual bullying.

Rabbi Dr Jonathan Romain, added “Some schools shy away from controversial issues or trends, out of a misplaced sense of not trying to offend or disadvantage any particular group of people. Chestnut Grove Academy shows that schools can explore such topics in ways that are challenging and thoughtful.”

Areas of Paddock School’s work that won praise from judges included the launch of a parent training scheme, special effort to build relationships with hard-to-reach families, an emphasis on pupils’ rights and the opening of a school café, open to local residents and providing pupils with work experience (pictured).

Chestnut Grove Academy and Paddock School will now receive a prize of £500 and £100 respectively for their success.





When to get your child's jabs

Immunisation is a simple way to protect your child from diseases which can potentially cause serious harm.

If your child has missed any of the vaccinations, please contact your GP surgery.

If you would like to find out more details about the childhood vaccination programme, please visit the council's immunisation page: www.wandsworth.gov.uk/immunisation

Please note: The existing flu immunisation programme will be extended over a number of years to include all children aged two to 16 years inclusive.

Wandsworth's vaccination schedule, accurate as of July 2016

Age of your child	Diseases protected against
Two months old (Three injections and one oral dose)	1st dose - Diphtheria, tetanus, pertussis, polio and Haemophilus influenzae type b (DTaP/IPV/Hib) 1st dose - Pneumococcal (PCV) 1st dose - Rotavirus 1st dose - Meningococcal B (MenB)
Three months old (Two injections and one oral dose)	2nd dose - DTaP/IPV/Hib 2nd dose - Rotavirus
Four months old (Three injections)	3rd dose - DTaP/IPV/Hib 2nd dose - PCV 2nd dose - MenB
Between 12 and 13 months old - within a month of their first birthday (Four injections)	Booster Hib (includes Meningococcal C) Booster - PCV 1st dose - Measles, mumps and rubella (MMR) Booster - MenB
From 15 months (One injection)	*2nd dose - MMR
Three years four months old or soon after (One injection)	Booster - Diphtheria, tetanus, pertussis and polio
Two to seven year olds- including all children in years 1, 2 and 3 (Nasal spray)	Influenza (each year from September)



* Please note that Wandsworth operates to an accelerated MMR vaccination schedule, 2nd dose of MMR is given from 15 months to encourage and improve local immunisation uptake.



Awards for history explorers

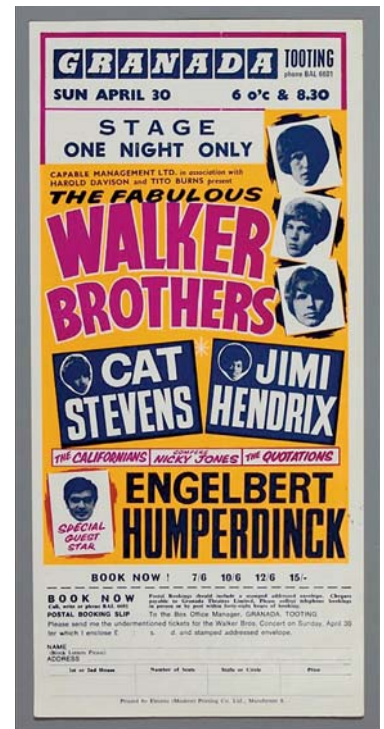
St Boniface School won this year's Wandsworth Heritage Awards for Schools competition with an exploration of entertainment in Tooting since the 1930s.

The school used the listed former Granada Cinema, now the Gala Bingo Hall, in Tooting to explore how entertainment has changed in the local area since the cinema first opened.

Pupils, parents, teachers and head teachers from each of the winning schools were invited to a town hall presentation evening hosted by the mayor of Wandsworth Cllr Richard Field.

All winners received their medals, certificates and plaques. Cash prizes of £1000, £500 and £250 were received by the first, second and third prize winners respectively.

Second prize went to **Earlsfield Primary School** for their work on *A Quid for Sid* – a local campaign raising money to erect a plaque



Cllr Field said:

“ An understanding of local history is vital if we are to give our young people a sense of place and belonging in our diverse society, and of who made Wandsworth what it is today. ”

commemorating the youngest soldier in the first world war, Sidney Lewis.

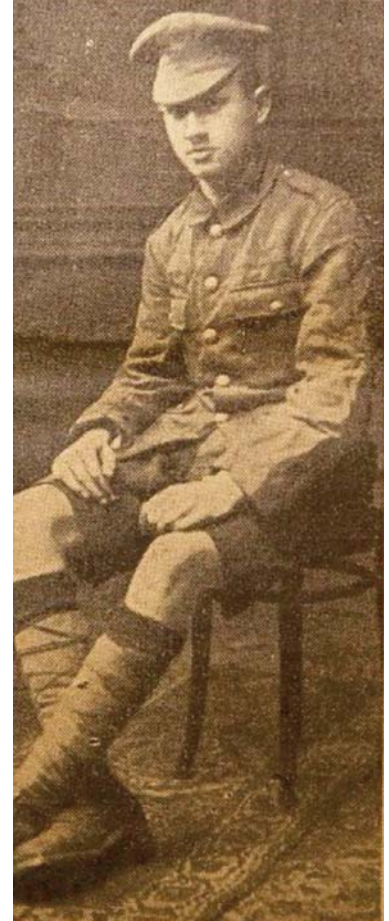
Third prize was won by **All Saints School** in Putney for a project on Putney Bridge.

The competition was sponsored by Greenwich Leisure Limited, the council's library and heritage service contractor, and the judging

panel included the Mayor, Peter Bunday, Deputy Managing Director of Greenwich Leisure Limited, Pamela Greenwood from the Wandsworth Historical Society and education consultant Caroline Staples.

Find out how to enter next year's competition at wandsworth.gov.uk/schoolsheritageawards.

Below left: Old Putney Bridge
Below right: Sidney Lewis
Bottom: Gala Bingo Hall



Keep safe in the water this summer

Summer's the time to get outside and have fun, but it only takes three minutes for a child to drown face down in water, so take simple precautions.

Between five and ten children a year drown in garden ponds. If you have a toddler it's best to turn the pond into a sand pit. Otherwise cover the pond with a substantial grille, or put a fence around it.

If you're staying with friends, be careful if they have a pond or uncovered spa - don't let young children wander off on their own. Remember, drowning children don't cry out – they just disappear under the water, so keep an eye on them at all times.

Older children are more at risk at beaches, rivers, canals and lakes. Even the strongest swimmer can be affected by cold water shock, which affects their ability to control

breathing. Stick to a lifeguarded beach or lido.

If you do swim in a river or the sea, get in slowly, choose shallow spots, and if you're at the beach, check for dangerous currents and tides.

On holiday remember that a pool attendant isn't the same as a lifeguard so don't rely on them to keep your child safe. At the beach, read the water safety information signs and ask a lifeguard or tourist information officer where the safest area is to swim.

Think you're water wise? Take this quiz at rospa.com/leisure-safety/water/advice/children-young-people/water-wise-quiz

EARLY EDUCATION FOR 2 YEAR OLDS

Wandsworth Council are offering some two year olds up to 15 hours free Early Education from 1 September, 1 January or 1 April following their second birthday.

Apply online:
www.wandsworth.gov.uk/2yo
or call the Early Education and
Childcare team: 020 8871 8339



Summer listings

This is just a taste of what's going on. For lots more activities, visit the Family Information Service at www.wandsworth.gov.uk/fis



• Summer at the Wetlands Centre

Be a Nature Explorer
Saturday July 23 – Sunday
September 4

Children can collect a passport with wildlife themed activities on it and for every challenge they complete they'll get a sticker.

Dragonfly Week
Saturday 23 - Sunday
31 July

The British Dragonfly Society will be resident at London Wetland Centre for most of Dragonfly Week 2016. BDS members will be on hand providing great ID tips, and answering your dragonfly questions.

London Wetlands Centre, Barnes.
www.wwt.org.uk/wetland-centres/london



How to be listed

Send details to:

headstart@wandsworth.gov.uk

by Monday September 12, 2016.

We cannot guarantee that your entry will be inserted. This is a free service. The information in this guide has been provided by the advertisers themselves. Wandsworth Council accepts no responsibility for the accuracy of the information or for any event not organised by the council.

SPORTS & FITNESS

• Activ Camps

Multi-activity camp for children aged four to 14. Dodgeball, quad biking, inflatables, water slides, indoor rock climbing, swimming, foam stick hockey, obstacle courses and more. There are two locations in the borough:

• Graveney School:

Monday 18 July - Friday 19 August, 8.30am - 4.30pm (9am - 1pm for 4 year olds)

Daily rate: 5-14 : £37, four year olds: £25

Weekly rate: 5-14: £165

info@activcamps

07896 546 067

www.activcamps.com/venuesdates/graveney-school/

• Emmanuel School:

Monday 11 July - Friday 19 August 2016: 8.30am - 4.30pm (9:00am - 1:00pm for 4 year olds)

Daily rate: 5-14: £42, 4 year olds: £25

Weekly rate 5-14 year olds: £180

info@activcamps

07813 880 513

www.activcamps.com/venues/emanuel-school/



• All Star Tennis holiday camp

Camps run for juniors aged three to teens throughout the school holidays. All levels and abilities welcome.

Locations

- Wandsworth Common (SW18 3RT)
- King Georges Park (SW18 2GJ)

- Tooting Common (SW17 8JU)
- Leaders Gardens (SW15 1LS)

www.allstartennis.co.uk

info@allstartennis.co.uk

(020) 8871 4706



• Archery

Summer holidays – please ring to confirm cost, dates and times. Qualified instructors teach the skills of archery in a fun and safe environment. For young people aged 7-16 years old.

The Aspire Centre, Southfields

(020) 8875 2603

info@aspirecentre.com

www.aspirecentre.com

• Inflatable Fun for over-8s.

Monday July 25 and Monday 1, 8, 15 and 22 August, 2pm-3pm

Fun swimming session with inflatable assault course and floats.

£4 per child. Tickets go on sale at 9am on the day – first come first served

Tooting Leisure Centre, Greaves Place

(020) 8333 7555

www.placesforpeopleleisure.org



• Fun Swim

Summer holidays, 1pm-3pm

These sessions are for children aged 8+, including non-swimmers, beginners and improvers. Supervised by lifeguards.

£2.20 non-members, £1 members.

The Aspire Centre, Merton Road,

Southfields

(020) 8875 2603

info@aspirecentre.com

www.aspirecentre.com

• Fencing

Fencing for beginners aged 7-12. £8 per session including the use of all equipment, with half price rates available for people that live on local estates.

Classes every Mon & Wed from 4.30 - 5.30 during term time.

Ethelburga Community Centre, Battersea SW11 4RA

contact@thefencingschool.com

www.thefencingschool.com

• Multi-sports Activity Day

Summer holidays, 10am-3pm

Various sports including basketball, cricket, mini-tennis, rounders, team building and more. For young people aged 5-10.

£20 a day. Please call to book a place.

Aspire Centre, Merton Road, Southfields
(020) 8875 2603

info@aspirecentre.com
www.aspirecentre.com

• Teenage Fitness

Summer holidays, 2pm-3pm

Fitness for children aged 13-16 years. This will be a supervised session in the fitness suite.

Aspire Centre, Merton Road, Southfields
(020) 8875 2603

info@aspirecentre.com
www.aspirecentre.com

• Trampoline

Summer holidays, 10am-noon and 1pm-3pm

Trampoline for children aged 5-10 years. Learn some new fun and enjoyable skills involving acrobatics with simple to complex routines.

Aspire Centre, Merton Road, Southfields
(020) 8875 2603

info@aspirecentre.com
www.aspirecentre.com

• Zesh Rehman Foundation Football

These Saturday afternoon football coaching sessions are for any 5-11 year old who enjoys playing football and wants to improve their skills.

Graveney School, Welham Road, Tooting.
07583 628 324

info@zeshrehmanfoundation.org
www.zeshrehmanfoundation.org

• Summer Holiday rowing courses

July 11-August 26

Five-day junior summer holiday rowing courses are age 11 (school year 7) upwards. Please note, we are unable to accept juniors that start year 7 in September 2016 onto these courses.

£120.

Barn Elms Sports Centre
wandsworth.gov.uk/banelms



• Rhythmic Gymnastics

Summer holidays, 10am-1pm

Rhythmic Gymnastics involves elements of gymnastics, dance and apparatus manipulation. Individuals or teams work to music using ropes, hoop, ball, clubs and ribbon, creating beautiful gymnastics routines. These classes are suitable for children and young people aged 6-13 years.

Aspire Centre, Merton Road, Southfields
(020) 8875 2603

info@aspirecentre.com
www.aspirecentre.com



• Rock Climbing

Summer holidays 10am-noon, 1pm-3pm

Children can enrol for a single session, a whole day or any other combination of sessions. This session is for young people aged 6-16 years, novice or experienced, plus mums, dads and carers.

Aspire Centre, Merton Road,
Southfields
(020) 8875 2603

info@aspirecentre.com
www.aspirecentre.com

• Battersea Summer Scheme

August 2-5

Sport in the Park at the Millennium Arena. Sport for young people including athletics, Football Coaching, Tennis, Tag Rugby, Trapeze, Art, Judo, Music, Climbing Wall, Archery, Street Athletics, Rowing, Dancing, Boxing, Assault Course and more.

Entry £1. 11:30am to 4:30pm

www.batterseasummerscheme.org.uk

SPORTS & FITNESS

• Tooting Bec Lido

Babies, children, young people and adults of all abilities are welcome. Includes children's paddling pool. Children under 8 years old MUST be supervised by a parent or adult. Maximum ratio of three children to one adult. Those supervising must accompany the children in the water.

Tooting Bec Road, Tooting
(020) 8871 7198
enquiries@tootingbecrido.co.uk
www.wandsworth.gov.uk/lido



• SkyRide summer bike rides

There are various rides in and around Wandsworth this summer, including

• Battersea Park Santander Cycles Ride

Sunday July 10, Sunday August 28, 10am.

A four mile ride, with no age restrictions. Starting at Millenium Arena.

• Ride Wandsworth

Sunday July 31 and Sunday August 28 at 1pm

Starting from entrance of King George's Park, next to Wandle Recreation Centre and Argento Tower, Mapleton Road. This is a 90-minute ride, with no age restrictions.

• Wandsworth Easy Family Ride

Sunday July 10, 2pm.

A six mile ride starting outside the Bricklayer's Arms, Waterman Street, Putney.

[Read more at.goskyride.com](http://www.goskyride.com)



• Football At Burntwood Throughout Summer Holidays

A new football club for boys and girls aged 4 – 11. All levels welcome. Come along to learn new skills, play matches and have fun.

10.00am–3.00pm or 10.00am–12.00 pm. £25 per day or £15 per half day. Deals for siblings and friends booked together.

Run by FA Licensed coaches in a safe, secure location.

Burntwood School, Burntwood Lane, London, SW17 0AQ
info@footballatburntwood.co.uk
www.footballatburntwood.co.uk
07875 581376



• Swimming lessons

Summer holidays, 9.30am – 1pm

This summer Aspire will be hosting swimming lesson for children aged 5 years and up.

Lessons last 30 minutes and are open to all levels.

Aspire Centre, Merton Road, Southfields
(020) 8875 2603 info@aspirecentre.com www.aspirecentre.com

JUST PLAY



• Soft Play at Latchmere Leisure Centre

Two storey soft play facility for children aged up to 8 years.

Some of the features include:

- Slide
- Ball pond
- Tiger rollers
- Bish bash bags

- Spider web climbers
- Children must be supervised by parents at all times whilst using the soft play area. £4.25.
Placesforpeopleleisure.org/centres/latchmere-leisure-centre/soft-play

• George Shearing Centre

Open for young people aged 13-25 with severe learning disabilities and complex needs. Activities include pool, drumming, football, football, art, computers, Wii and a sensory room.

Este Road, Clapham Junction
(020) 7228 2230

aburman@wandsworth.gov.uk
www.wandsworth.gov.uk/youth

• Supercamps

Monday 11 July - Friday 26 August 2016

Children are able to experience up to eight different activities per day to include sports, arts and crafts.

£190 per four and 5 day week, the fifth day is free. £48.00 per day, if not a full week required and individual days booked.

Putney High School

www.supercamps.co.uk/camps/putney-high-school-2



• Go Ape

Treetop fun in Battersea Park
goape.co.uk

• Battersea Park Playground

Exciting play equipment suitable for children over 8. Under 8s should be supervised by an adult. Free – just drop in. The playground is open the same hours as the park.

Enter through Sun Gate entrance.

CHILDREN'S CENTRES

Children's centres across the borough will be holding special half-term activities. To find your nearest centre and download a timetable, visit www.wandsworth.gov.uk/fis

DAYS OUT



• Battersea Park Zoo

Summer fun at the zoo, including
July 26: Rabbit Day – meet one, draw one, be one

July 28: Hedgehog Day – arts and crafts, stories and the chance to meet a hedgehog

August 2: Bug Day – hear them, see them and make your own

August 4: Mouse Day – arts and crafts, stories and the chance to meet a mouse

August 9: Snake Day – meet a snake and make a snake puppet of your own

August 11: Lizard and Tortoise Day – stories and puppet making, plus meet a bearded dragon lizard

August 13: Cotton Top Tamarin Day – a day devoted to raising funds and awareness of these endangered monkeys.

www.batterseaparkzoo.co.uk

• The Friends of Saint Cecilia's Summer Fete

Saturday July 9. 11.30am to 2.30pm

BBQ, Pimms tent, strawberries and cream, deli stall, tombola, raffle, last-man-standing inflatable, beat the goalie, candy floss and sweets, coffee van, curry, real ale, arts and crafts, second hand uniform sale, DJ and school band plus lots of fun activities for children of all ages.

• Live at the Bandstand

Saturday July 16, 12-6pm

This year's theme is rockabilly and rock and roll and the event features live music, food stalls and a bar plus art and craft and vintage stalls and a children's area.

wandsworth.gov.uk/bandstand



• Family Fun Day

July 10, noon-5pm

Enjoy events including a DJ, a bake-off competition, food and barbecue, children's fancy dress costume, tombola and raffle. Organised by the Ronald McDonald House, Tooting.

St George's Hospital Car Park, Tooting

• Deen City Farm

Children's events, riding lessons, educational programmes and a collection of friendly animals. Open from 10am-4.30pm all year round. Closed on Mondays.

39 Windsor Avenue, South Wimbledon

(020) 8543 5300

www.deencityfarm.co.uk

• Summer fun day and craft fair

July 16

BBQ, bouncy castle, soft drinks, cakes and many handmade craft stalls.

St Margaret's Church, Putney Park Lane SW15. Contact Dawn 07931 478619.



• Wandsworth Society trip to the Hive Honey Shop

July 20, 2.30pm

Talk by a bee-keeper and private tour of The Hive Honey Shop in Battersea.

The Hive Honey Shop has been in Wandsworth for more than 20 years and has the largest selection of English and international honeys in the country. The shop is run by a family of third generation beekeepers who produce honey from their local Wandsworth beehives as well as their Surrey farm nine miles from Wandsworth.

Priority will be given to Wandsworth Society members. Book in advance by email: catheadley136@gmail.com.



• Luna Cinema

Cinema under the stars

July 13, Tooting Common, Pitch Perfect

July 14, Tooting Common, Ferris Bueller's Day Off

July 26, Wandsworth Park, Casablanca

July 27, Wandsworth Park, The Goonies

August 30, Battersea Park, Max Max Fury Road

August 31, Battersea Park, Mean Girls

www.thelunacinema.com

• Northcote Road Summer Fete

July 10

Stalls, food and entertainment, plus the Wimbledon Men's Final shown on a big screen.

• Summer at the Wetlands Centre

Saturday July 23 - Sunday

September 4

Play Wetlands Top Trumps

10am - 4pm

Do you think you can beat London Wetland Centre at a game of Top Trumps? Pick up your Wetland Animals Top Trumps card and follow our trail of cards to see what score you get. Everyone wins a prize, but will you be a bronze, silver or gold winner?

£1.00 per trail (including a prize), plus paid admission to the Centre.

London Wetlands Centre, Barnes

www.wwt.org.uk/wetland-centres/london



• Foodstock

July 31

Celebrating local produce and brewers. Local brewer Sambrooks will be attending offering over 20 beers, all named after local points of interest in Wandsworth plus artisan food, live music and children's area.

Advance tickets £2 adult, child under 16 £1, On the door £4 adult, child £2 (fees apply)

Battersea Park

www.enablelc.org/foodstock

• RNLI Splash Fest

Sunday, August 7

Water-based fun for seven to 12-year-olds, including water slides, shooting games, inflatables, a maze, giant bubbles and more, plus an event village with live music, entertainment and games.

£22 adults, £10 children in advance or £25/£12.50 on the day. Profits go to the Royal National Lifeboat Institute.

Battersea Park

splashfest.co.uk

DAYS OUT

ARTS AND CRAFTS



• The Streets in Tooting Saturday July 23 and Sunday July 24

Saturday: Vocal performances by professional and amateur singing groups happening on the hour every hour, at a variety of venues in Tooting. The audience will travel from performance location to location, listening to different groups and discovering their local area. Eleven performances from 10am with the last one at 8pm.

Two family vocal singalong workshops at Tooting Library.

Sunday: Summer street party, with live music and a range of local food and other stalls on Cowick Road.

www.thestreets.london

• Active Art July 19 – August 12.

Summer animation workshops. Learn stop frame animation techniques, plus editing and sound. Age 6-13, 9.30am-3pm.

The Nature Study Centre, Wandsworth Common
07775 781332, artimatelondon@gmail.com
www.naturescope.co.uk



• Arts and Crafts at Aspire Summer holidays, 10am-noon, 1pm-3pm

Explore your creativity and get messy!
For children aged 7-13 of all abilities.

Aspire Centre, Merton Road, Southfields.
Call for details.
(020) 8875 2603
info@aspirecentre.com
www.aspirecentre.com



• Putney School of Art and Design Summer Programme

July 11-26
Summer School of Art
Short courses in botanic illustration, etching, abstract painting, pottery and screenprinting. Mix of adult and young people classes.

(020) 8788 9148
Oxford Road, Putney
www.wandsworth.gov.uk/psad

• Night Safaris Fridays 12, 19, 26 August Approx 7pm – 10pm

Build dens, exploring the centre at night and look for bats and other nocturnal animals.

Suitable for children age 7+ Price per child including one accompanying adult: £22.50 and each family group must be accompanied by one adult.

Price includes admission to the Centre after 6.00pm.

Places are limited so booking is essential: call 020 8409 4400.

London Wetlands Centre, Barnes
www.wwt.org.uk/wetland-centres/london

• Vauxhall City Farm

A piece of the countryside in the heart of London. Riding lessons, young farmers club and a collection of animals.

Entrance free but donations welcome.

165 Tyers Street, SE11
(020) 7582 4204
info@vauxhallcityfarm.org
www.vauxhallcityfarm.org



• Putt in the Park

Mini-golf in Wandsworth Park and Battersea Park. Enjoy a round of putting and then relax in the cafe. The new Battersea venue also includes a Pizzeria and Bar. Open 9am to dusk. No booking required.

www.puttinthepark.com

THEATRE & BOOKS



Summer at the Battersea Arts Centre

• Family Saturdays

July 30, August 27, 10am-3pm

On the final Saturday of each month, free workshops and creative hang-outs will spill into spaces across Battersea Arts Centre, including The Bee's Knees, an indoor garden play space for 0-5s. Activities include face painting, toy/clothes swaps and artist-led craft workshops. Supported by the Heritage Lottery Fund.

bac.org.uk/familysaturdays

020 7223 2223

• Extravaganza Macabre

July 26-August 26, 7.30pm plus Saturday matinees 2.30pm

Experience an evening of music and audience mischief as Little Bulb Theatre launch Battersea Arts Centre's new open-air theatre with Extravaganza Macabre. A tale of villainy and valour in Victorian London

as a freak storm parts two lovers, setting them on a torturous path of cruel fate and hapless chance. From £12.50, Age Recommendation: 12+

bac.org.uk/extravaganza

020 7223 2223



• Group64 summer holiday projects

July 25-29:

Sharks vs Jets Ages 11-16, £105

August 1-5:

A Spoon Full of Sugar Ages 7-11, £105

August 8-10:

Jungle Jive Ages 4-7 £65

www.g64.org.uk

• Polka Theatre

July 27: Summer Senses

Multi-sensory drama workshop. Age 3-5, 10-11am, £18 per child.

July 28: Sounds Off

Clowning workshop exploring the art of silent comedy. Age 6-9, 10.30am-3.30pm, £30.

July 29: Theatre Unlocked – Music Masterclass

Creating music for stage and screen. Age 10-14, 10.30am-3.30pm, £30.

1-5 August. Summer School –

Musical Puppet Theatre Age 6-9, 10.30am-3.30pm, £150.

240 The Broadway, Wimbledon SW19 1SB
020 8543 4888

www.polkatheatre.com

CHILDREN WITH DISABILITIES

• Alton Resource Base Holiday Scheme

For children aged 3-11 with Autistic Spectrum Disorder.
(020) 8871 6348

playservices@wandsworth.gov.uk
psebookings.wandsworth.gov.uk

• DSC Community Club

Tuesdays, 4.30pm-6pm

Sport for young people aged 11 and over with any disability.
(020) 8021 0973

Caius House Youth Centre, Battersea
emma@disabilitysportscoach.co.uk

• Lady Allen Holiday Play scheme

Lady Allen provides a holiday play scheme for adventurous play for disabled children and their siblings from the borough of Wandsworth between the ages of 5 -14 years. It offers outdoor and indoor facilities on a secure site including a soft play area, an indoor slide, arts and crafts, swings, hammocks, a zip wire, a giant see saw, slides, tree houses and a wide range of two and three wheeled bikes. Phone and ask to come for a visit on a Saturday, between 11am and 3pm with the child. On that visit all forms can be completed and the child's needs can be assessed.

Lady Allen Adventure Playground, Chivalry Road, Clapham Junction
(020) 7228 0278
ian.logan@kids.org.uk www.kids.org.uk

• London Recumbents - free bike hire for WAND Card holders

WAND Card holders and children and young people with disabilities or special educational needs from Wandsworth can enjoy free hire of a range of modified and adapted bikes, trikes, tandems and recumbent cycles at London Recumbents in Battersea Park

(020) 8299 6636

info@londonrecumbents.com
www.londonrecumbents.com/



Role Models

Monday 25 July - Friday 29 July, Tuesday 20 August - Friday 2 September

Role Models' Wandsworth camps are OFSTED registered and meet the needs of 6-12 year old children with mild to moderate special needs, including Dyspraxia, Down's Syndrome, Autism and Asperger's Syndrome. Each day is a balance of calm and dynamic activities, such as:

- whole group games of rounders;
- designing posters and pictures;
- team competitions;
- biscuit decorating;
- music and gaming sessions

Sessions are £60 per day discounted to £50 if 5 days are booked. Please contact provider for more details.

Albemarle Primary School, Princes Way, Southfields
07825 598 344

Hugo@rolemodels.me

www.rolemodels.me/sen-summer-camps-2016/

HEALTHY STUFF

• Punch and Judy at Balham Farmers Market

Saturday 3rd July

Henry Cavendish School, Hydethorpe Road, Balham, London SW12 0JA

• Carers' Evening Information Sessions

Sessions are held on the third Monday of every other month at the Carers' Centre, Balham Office.

Get information on various topics, ask questions, have discussions and share information.

Open to all carers

(020) 8877 1200.

• Drop-in Behaviour and Sleep Clinic

Third Wednesday of every month, 1pm-2.30pm

For parents experiencing difficulties with their child's behaviour or sleep

Franciscan Children's Centre, Franciscan Road, Tooting (020) 8672 3048

• Free Led Walks

Walks led by trained leaders in Battersea, Tooting and Roehampton.

(020) 8871 6373.

• Man MOT

Free confidential online advice for men with a nagging health worry who are too busy to, or just don't want to, visit their GP.

www.wandsworthman.net

HOLIDAY PLAYSCHMES

• Christchurch Primary School

Este Road, SW11 - 5 mins walk from Clapham Junction station, for children aged 3-13 years

• Smallwood Primary School

Smallwood Road, SW17 - 15 mins walk from either Earlsfield or Tooting Broadway stations, for children aged 3-11 years

Online in advance. Prices start from £10 per child for a half day (8am - 1pm or 1pm - 6pm) or £20 per child for a full day (8am - 6pm)

For more information call the booking helpdesk on 020 8871 6348 or you can email us at EYISSChildcare@wandsworth.gov.uk. The helpdesk is open Monday to Friday, 10am - 1pm.

How do I find out about...

Schools

General information: [wandsworth.gov.uk/schools](https://www.wandsworth.gov.uk/schools)

Admissions: [wandsworth.gov.uk/admissions](https://www.wandsworth.gov.uk/admissions)

Term dates: [wandsworth.gov.uk/termdates](https://www.wandsworth.gov.uk/termdates)

Find a school: [wandsworth.gov.uk/schoolsAtoZ](https://www.wandsworth.gov.uk/schoolsAtoZ)



Recycling

General information: [wandsworth.gov.uk/recycling](https://www.wandsworth.gov.uk/recycling)

What can I recycle?:
[wandsworth.gov.uk/recyclefromhome](https://www.wandsworth.gov.uk/recyclefromhome)



Arts, leisure and culture

Arts: [wandsworth.gov.uk/arts](https://www.wandsworth.gov.uk/arts)

Events: [wandsworth.gov.uk/events](https://www.wandsworth.gov.uk/events)

Libraries: [wandsworth.gov.uk/libraries](https://www.wandsworth.gov.uk/libraries)

Leisure centres and sport: [wandsworth.gov.uk/sport](https://www.wandsworth.gov.uk/sport)

Adult Education: [wandsworthlifelonglearning.co.uk](https://www.wandsworthlifelonglearning.co.uk)



Parks

General information: [wandsworth.gov.uk/parks](https://www.wandsworth.gov.uk/parks)

Playgrounds and trim trails A-Z:
[wandsworth.gov.uk/playgroundsAtoZ](https://www.wandsworth.gov.uk/playgroundsAtoZ)



Health, childcare and parental support

[wandsworth.gov.uk/fis](https://www.wandsworth.gov.uk/fis)





Southfields
Academy

EMBRACING INNOVATION AND TRADITIONAL VALUES

We invite you to attend our **open events** for year 7 and sixth form prospective students and their parents.

SEPTEMBER

Wed 21st 08:45 – 10:45
Fri 23rd 08:45 – 10:45
Fri 30th 08:45 – 10:45

OCTOBER

Tue 4th 08:45 – 10:45
Wed 5th 17:30 – 19:30

SOUTHFIELDS ACADEMY, 333 MERTON ROAD, LONDON, SW18 5JU

T: 020 8875 2600

W: WWW.SOUTHFIELDSACADEMY.COM • E: INFO@SOUTHFIELDSACADEMY.COM
FOLLOW US ON TWITTER @SOUTHFIELDSACAD