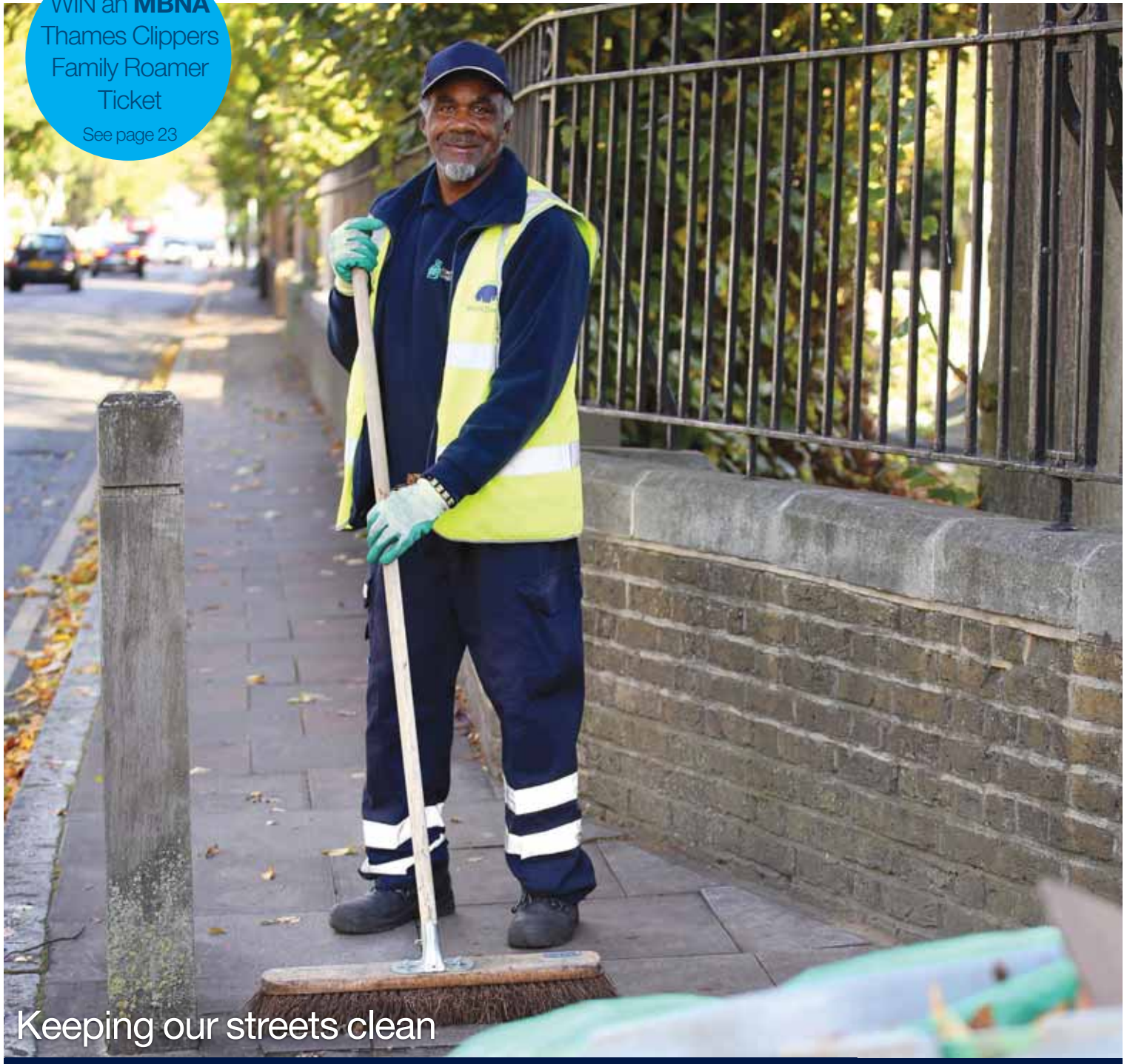


# Brightside

The magazine of Wandsworth Council

Issue 182 November 2017

WIN an **MBNA**  
Thames Clippers  
Family Roamer  
Ticket  
See page 23



Keeping our streets clean

Northern Line Extension comes closer

New cultural hub for Wandsworth Town

A brighter borough for all



Delivered to 140,000 homes - Balham Battersea Earlsfield  
Furzedown Putney Roehampton Southfields Tooting Wandsworth

Can you  
give a child  
a new start with  
**adoption?**



**Adoption  
Information  
Event**

Tuesday 5 December  
6.30pm - 8.30pm

**Call us now on  
(020) 8871 7184**

To find out more:

 **(020) 8871 7184**

 **wandsworth.gov.uk/adoption**

 **adoption@wandsworth.gov.uk**



**Adoption**





Leader of the council Ravi Govindia (right) visited the tunnelling site in August.



# Northern Line tunnelling complete

## Work on drilling the tunnels for the Northern Line extension has finished.

After months of drilling using giant boring machines, the tunnelling work is complete as a new tube link for Nine Elms and Battersea comes a step closer.

Work started in April on drilling the lines, which have linked up with the existing Northern Line tunnels at Kennington. As the machines progressed along the route, precast concrete segments that line the tunnel were put in place. The material removed was taken away by barge and used to create arable farmland in Essex.

Construction work is continuing on two new tube stations – Nine Elms station in Pascal Street and Battersea Power

Station on Battersea Park Road next to the Power Station development. These will serve new developments such as the US Embassy, the Power Station and the redevelopment of New Covent Garden Market, as well as existing communities. Passengers should be able to ride the Northern Line to Battersea in 2020.

The Northern Line Extension helped to kick start the regeneration of Nine Elms and Vauxhall which is on course to create around 25,000 new jobs and more than 20,000 new homes.

Get regular updates on progress of the Northern Line Extension at [tfl.gov.uk/northern-line-extension](http://tfl.gov.uk/northern-line-extension)

**Inside**  
November 2017  
[www.wandsworth.gov.uk](http://www.wandsworth.gov.uk)

Cover photo: Street sweeper  
Kenneth Chambers.

New roads and pavements	4	Brighter borough for all	15-22
Protecting EU citizens	5	Win a Thames Clippers Roamer ticket	23
Drive electric	6	Broadband for estates	26
New cultural hub for Wandsworth Town	7	Get ready for winter	28
Day in the life of a street cleaner	10-11	Christmas in the town centres	30
New council homes	12	What's On	31-33
Crackdown on tenancy fraud	13	Useful numbers	35



# New roads and pavements

**Roads and pavements will be upgraded and potholes repaired this winter as part of an ongoing investment programme.**

The council is responsible for maintaining more than 230 miles of road surface and will spend more than £1.5m this financial year on repairing potholes. Since 2012 nearly 35,000 potholes have been filled in.

On top of this, another £3m has been set aside to upgrade roads. In the 12 months leading up to April 2018,

dozens of residential roads across the borough have been completely resurfaced to ensure safer journeys for cyclists and motorists.

A further £2m has been spent laying entirely new pavements in more than 30 roads and £340,000 has been received in the form of a grant from Transport for London which will be used to fund road resurfacing in Garratt Lane and Falcon Road. This winter we're planting more than 600 street trees in residential areas and



next winter at least 500. There are around 16,000 street trees in the borough of Wandsworth. Residents can report potholes or broken pavements via [www.wandsworth.gov.uk/pothole](http://www.wandsworth.gov.uk/pothole) or by emailing [onestreetservices@wandsworth.gov.uk](mailto:onestreetservices@wandsworth.gov.uk).

To obtain a copy of Brightside in large print or audio version please telephone (020) 8871 7266 or email [brightside@wandsworth.gov.uk](mailto:brightside@wandsworth.gov.uk)

## Your Brightside

Your Brightside is distributed by London Letterbox Marketing. We expect all copies of Brightside to be delivered to every home in the borough and pushed fully through the letterbox.

It is produced by the council's corporate communications team. It is the only publication delivered to every household in the borough. We would like to thank all our advertisers for their support. Brightside will consider display advertisements from non-council bodies (excluding recruitment) and reserves the right to decline advertisements. The council neither accepts responsibility for the content of nor endorses any non-council advertisements.

- Editorial (020) 8871 8902
- Advertising (020) 8871 7266

If you have a comment about the magazine please telephone: (020) 8871 8902/6173 or email: [brightside@wandsworth.gov.uk](mailto:brightside@wandsworth.gov.uk).

Brightside is printed on environmentally friendly paper, please recycle.



# Fight to protect EU citizens

**Wandsworth Council leader Ravi Govindia has called for the rights of EU citizens to live and work in London to be safeguarded and protected.**

In September he co-signed a letter to EU Chief Negotiator Michel Barnier, along with the leaders of Westminster and Kensington and Chelsea councils, calling on him to focus his attention on securing the rights of the Capital's resident EU nationals. This follows a similar letter Cllr Govindia sent to the Prime Minister in July in which he urged her and her Brexit ministers to treat this issue as their biggest priority in the negotiations. Read both letters at [www.wandsworth.gov.uk/EUletters](http://www.wandsworth.gov.uk/EUletters).

The council offers a European Passport Return Service so that European nationals living in Wandsworth can keep hold of their passports when applying to the Home Office for a registration certificate or a document certifying permanent residence. Find out more at [www.wandsworth.gov.uk/EPRS](http://www.wandsworth.gov.uk/EPRS)

And a new specialist advice service is being developed with Citizens Advice Wandsworth to provide guidance to local EU citizens. Find out more about this and other support at [www.wandsworth.gov.uk/eusupport](http://www.wandsworth.gov.uk/eusupport).

## Doggy storytime

Children at St Boniface School were joined at Tooting Library by read2dogs therapy dogs from the charity Pets as Therapy last month. The read2dogs project helps young people read to adults by making the experience less stressful. It's especially helpful for less confident children who get very self-conscious when reading aloud. Find out more at [petsastherapy.org](http://petsastherapy.org).

The event was organised by libraries contractor Better as part of Social Saturday, which shines a spotlight on the work done by social enterprises in local communities. There are a wide range of events held every day in borough libraries.

[www.wandsworth.gov.uk/libraries](http://www.wandsworth.gov.uk/libraries).





THE  
**GIN SOCIETY**

# LONDON GIN FESTIVALS

THE GIN SOCIETY IS COMING TO TOWN!

WANDSWORTH TOWN HALL

FRI 23, SAT 24 & SUN 25 MAR 2018

HACKNEY TOWN HALL

FRI 11, SAT 12 & SUN 13 MAY 2018

BAYSWATER PORCHESTER HALL

THU 4, FRI 5 & SAT 6 OCT 2018

EARLYBIRD TICKETS, INCLUDING YOUR VERY OWN GIN GOBLET, ARE JUST £15 (+BOOKING FEE)

THE PERFECT CHRISTMAS PRESENT FOR ANY GIN LOVER

[www.eventbrite.co.uk/o/the-gin-society-10892136954](http://www.eventbrite.co.uk/o/the-gin-society-10892136954)

GinFestivals
 TheGinSociety
 The\_GinSociety

Join us for a sparkling evening of gin, fizz, fun and entertainment

Discover over 120 gins from around the world, plus a range of gorgeous prosecco cocktails

Learn about the history of gin – from its grisly past to its glamorous revival

Meet the distillers - the experts reveal their trade secrets, with master classes and tastings



# Drive electric

**Another 35 electric car charging points have been installed at 11 new sites across the borough.**

By the end of this year they are scheduled to be joined by at least another 50 charging points at 22 additional locations, subject to local consultation. Over the coming months the aim is to provide many dozens more. This will make owning and running an electric car a much more attractive and viable option for thousands more Wandsworth residents.

The charging points each have their own parking space and can only be used by electric vehicles whilst being charged. Owners of non-electric vehicles should not use them and face being issued with a ticket if they do.

Environment spokesman Cllr Jonathan Cook said: "We are looking beyond this to extend the infrastructure even further. This is the future of motoring and we intend to play our part in making it happen."

Customers who wish to use the new charging points will need to register with Source London. The new charge points can be reserved up to 40 minutes in advance. Fees and details of how to reserve a space can be found on Source London's FAQ page.

A number of other companies have provided publically accessible charging points within Wandsworth and across the capital. These locations can be found at [zap-map.com](https://www.zap-map.com). Find out more [wandsworth.gov.uk/driveelectric](https://www.wandsworth.gov.uk/driveelectric)

Tell us where you would like to see further on-street charge points. [DTSTransportation@wandsworth.gov.uk](mailto:DTSTransportation@wandsworth.gov.uk)



## Re-charge spaces

Mapleton Road car park (near the Wandle Recreation Centre) - **1 point**

Putney Leisure Centre car park, Dryburgh Road - **1 point**

## On-street charging points

Brudenell Road, Tooting - **3 points**

Haldane Place, Earlsfield - **5 points**

Openview - **3 points**

Prince of Wales Drive, Battersea - **3 points**

Rectory Lane, Tooting - **3 points**

Bramfield Road - **2 points**

Clonmore Street, Southfields - **3 points**

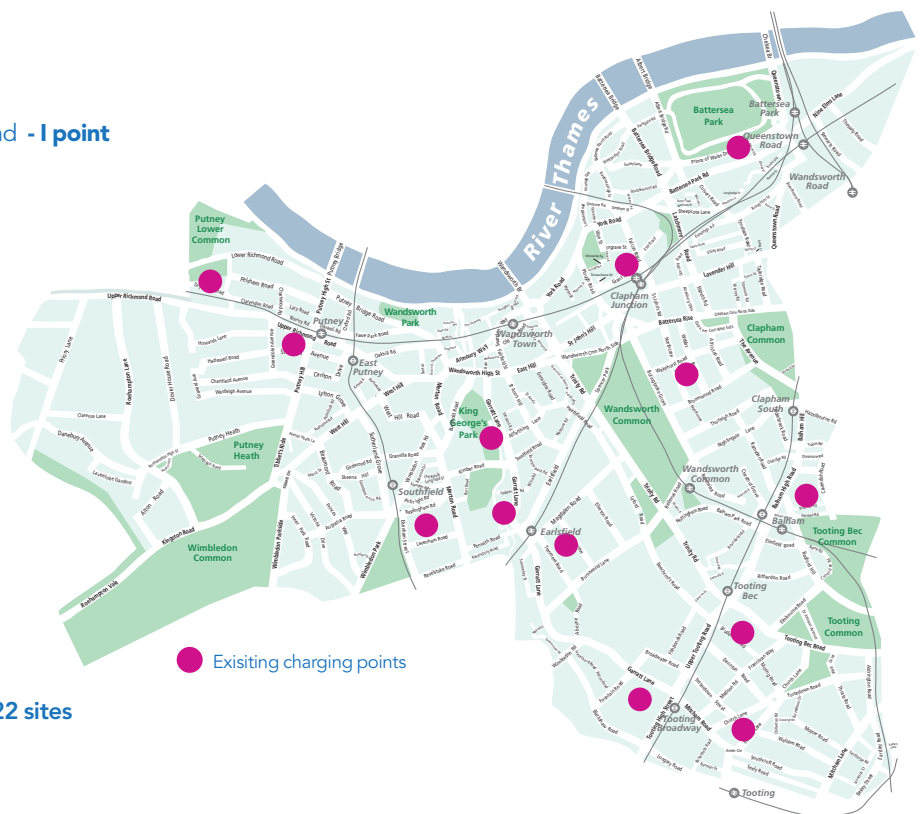
Coverton Road, Tooting - **2 points**

Grant Road, Battersea - **5 points**

Sistova Road, Balham - **3 points**

St John's Avenue - **3 points**

**Charging points will be added in a further 22 sites by the end of the year.**





# New cultural hub for Wandsworth Town



Ravi Govindia, Leader of Wandsworth Council, said:  
"The creation of the Ram Quarter is a key element of the council's regeneration of Wandsworth Town Centre. It's excellent news that the rich history of the site will be reflected in this cultural plan and that our thriving arts community is involved in creating a new cultural hub for the town which all our residents can enjoy."

## The developer of the Ram Quarter in Wandsworth Town Centre has unveiled a £12m cultural regeneration plan for the town.

The Greenland Group promises to transform the town centre into a cultural hotspot, with activities and plans specifically tailored around the local community and heritage of the area.

Plans include:

A new 2,208sq ft **heritage centre**, bringing to life the site's brewing heritage, including original listed machinery and equipment. The centre is due to open in November 2018.

A programme of **community-based activities and art installations**.

A new on-site **microbrewery** run by former Young's brewer John Hatch. Beer has been brewed continuously on the site for almost five centuries and John has been brewing small bespoke batches of ale in the site's stable block throughout the construction process to keep the tradition alive.

The **Harvest Festival** tradition will be revived in the former brewing and market town, with hop-pickers harvesting hops that have been planted in repurposed original Ram Brewery fixtures along the public boulevard.

Greenland has re-created the **river passes and natural flora and fauna** that would have traditionally grown in the area, re-introducing 2,000 plants to the river bank and bed and commissioning a new river wall to be built.

Restaurants will line the new stretch of river, the **promenade** section of which will open to the public shortly. This will be the first time ever that residents will be able to walk along this stretch of the River Wandle. In time, there will be three bridges connecting one side of the Ram Quarter to the other.

The Ram Quarter is just one of several key Wandsworth Town Centre regeneration sites. Construction is currently underway on 200 new homes, a better public library and a new green public space in the High Street and Garratt Lane, and Transport for London is drawing up plans to remove the Wandsworth Gyrotory System to make the town more pedestrian-friendly.

This is just part of a thriving arts and culture scene in Wandsworth. To get regular updates sign up to the arts newsletter at [enablelondon.org/arts-about](https://www.enablelondon.org/arts-about)



### On the fence

Pupils at St Mary's School in Battersea have worked with artist Orly Orbach to design a piece of artwork, call Push-Pull, on a new fence between the school's courtyard and a new public space at Gladstone Terrace. This was part of the redevelopment of the school as part of the Battersea Exchange regeneration project from developer Taylor Wimpey Central London which will also see new homes and spaces for community use. It was also part of the Cultivate project, run by Enable Leisure and Culture on behalf of the council, which helps schoolchildren make the most of the cultural opportunities created through the borough's regeneration. Visit [cultivate9elms.wordpress.com](http://cultivate9elms.wordpress.com)

Photo: Philip Wolmuth

**BE A HERO.  
STOP CRIME ON YOUR DOORSTEP.**

It sounds simple but every small step you take makes your home less attractive to a burglar.



**LOCK THEM OUT**  
LOCK ALL WINDOWS AND DOORS



**LEAVE THEM GUESSING**  
LEAVE A LIGHT ON AFTER DARK



**HIDE AND KEEP**  
HIDE VALUABLES FROM PRYING EYES



**DOUBLE SECURE**  
DOUBLE LOCK DOORS EVEN IF YOU'RE ONLY AWAY FOR A FEW MINUTES

For more advice visit [www.met.police.uk/besafe](http://www.met.police.uk/besafe)





## HAVE YOU RESPONDED TO YOUR HOUSEHOLD VOTER FORM?

The Borough Council Elections are taking place on Thursday 3rd May 2018.

All households in the borough have been sent a Household Enquiry Form asking for confirmation of who is eligible to vote.


You can respond **online**, by **phone** or by **text!**

Anyone not registered to vote should visit [gov.uk/register-to-vote](http://gov.uk/register-to-vote)

Registering can improve your credit score!

YOUR VOTE MATTERS

DON'T LOSE IT



AD.1174 BSide (10.17)



# Tributes to Councillor Maddan

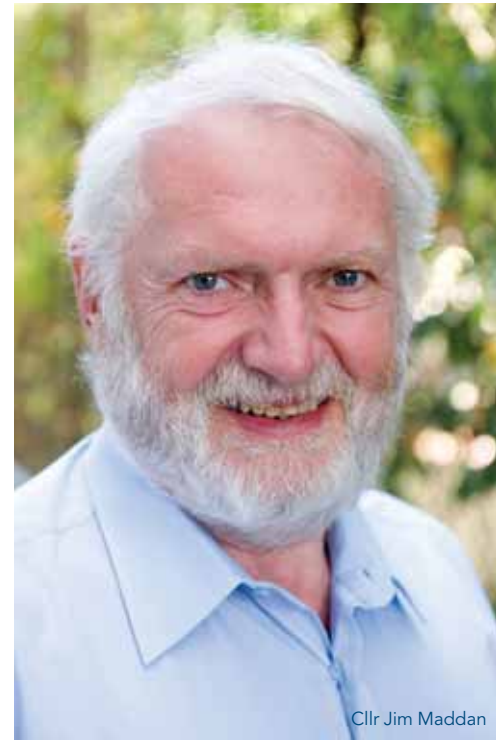
Tributes have been paid to the Mayor of Wandsworth Cllr Jim Maddan OBE following his sad death in September.

Jim Maddan had served on the council for 15 years, including nine years as the cabinet member for adult care and health. He served two terms as Mayor and was an active Rotarian. Prior to joining the council he served as a police officer for 30 years, rising to the rank of inspector, and was national chairman of the Neighbourhood Watch network. In January 2015 Cllr Maddan was awarded an OBE in the Queen's New Year's Honour List in recognition of his services to policing and the community.

At Cllr Maddan's funeral, Cllr Govindia described him as "quintessentially a Putney man" who had probably walked every inch of the town and was dedicated to protecting and improving it. "He was a true and genuine servant of the people, who made a positive difference to the many lives that he touched. We will all miss him greatly."



The new Mayor of Wandsworth is Cllr Leslie McDonnell. He is a former army officer, military historian and the council's Armed Forces Champion, who was instrumental in Wandsworth becoming one of the first boroughs to sign the Armed Forces Covenant.



He has chosen to support The Rotary Club and St John's Ambulance through his charitable fundraising this year, as well as the charity chosen by Cllr Maddan, the Wandsworth Community Safety Trust.

[www.wandsworth.gov.uk/mayor](http://www.wandsworth.gov.uk/mayor)

## EARLY EDUCATION

### FOR 3 AND 4 YEAR OLDS

Are you a working parent?  
Is your child 3 before  
**31 December 2017?**

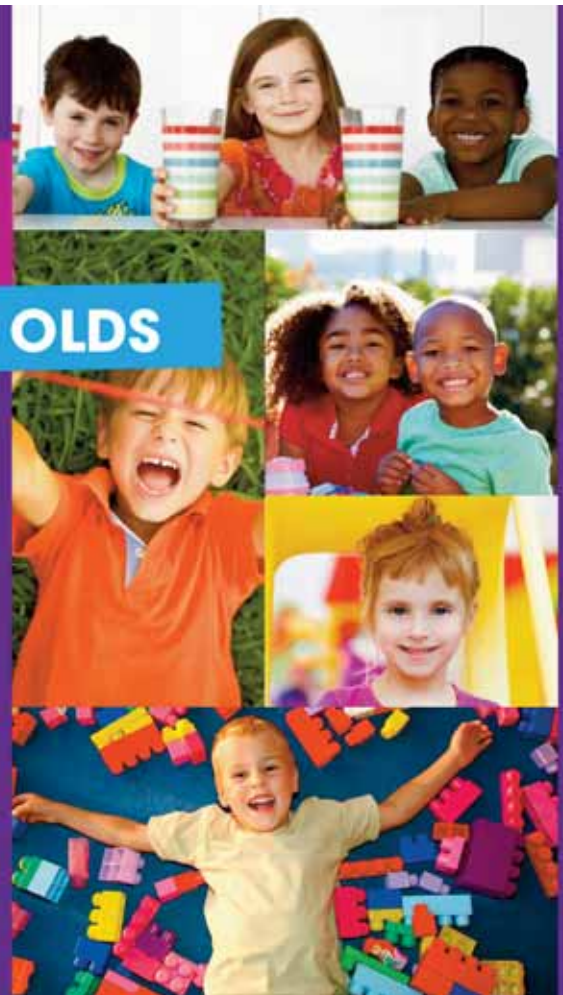
**APPLY NOW for 30 hours  
free childcare  
to start in January 2018.**

Visit: [www.wandsworth.gov.uk/30hours](http://www.wandsworth.gov.uk/30hours)

Call: 020 8871 7899



AD.1199(10.17)



# A day in the life of a Wandsworth Street Cleaner

Working with you to  
#KeepWandsworthClean

## The effort to keep Wandsworth's street clean starts before most people are awake in the morning.

Waste Contract Manager, Sharon Wright explains, "Our street cleaning team are out in rotating shifts seven days a week starting first thing in the morning. This ensures that our busiest town centres and residential streets are kept clean.

"The street cleaning team consists of sweeper operatives, LGV drivers, supervisors and mechanics. There is also a large mix of vehicle fleet, cages, sweepers, vans and cars - all of which help keep litter and flytipping off our streets."

Street cleaning supervisor, Tomasz Piatkowski has been cleaning Wandsworth's streets for the past nine years.

Starting off as a HGV driver, Tom was promoted to supervisor in March this year.

Tom spends an average day organising his team's daily schedule, collecting flytips, unloading rubbish at Smugglers Way and emptying litter bins around Battersea.

Tom says, "As I live and work in the borough I have pride in keeping our streets clean and love working outdoors and meeting new people every day.

"Over the past nine years, I feel that I have improved the area in which I work and live in for the better and it's great to see how much it's developed and how the community are also working towards cleaner streets in Wandsworth"



A standard day for Tom starts at 5.30am and finishes at 3pm but as no two days are ever the same his shifts can vary.

**5.30am:** Tom arrives at the depot in Wandsworth to start his shift. He spends the first part of his day allocating locations for his team for the day.



**6.30am:** Tom heads to Smugglers Way to unload his van which is full from collecting rubbish over the weekend. At Smugglers Way, Tom's van is weighed on the way in and the way out to ensure the right amount is charged for unloading rubbish.



**7.30am:** Tom meets Sweeper Operative, Kenneth Chambers (also pictured on our cover), in Battersea to run through his uniform and sign it off. All members of the street cleaning team must wear the correct uniform and high visibility waistcoats.





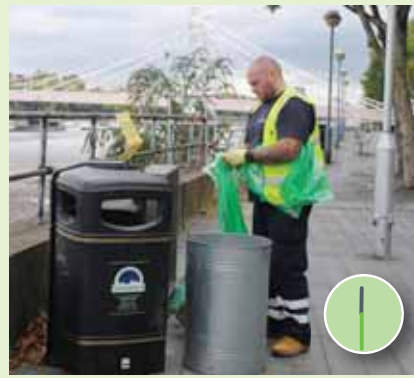
**8.30am:** Tom drives around Battersea and collects his first large flytip of the day on Town Hall Road in Battersea.



**9.30am:** A flytip report is sent through via email for Tom to collect on Ashbury Road.

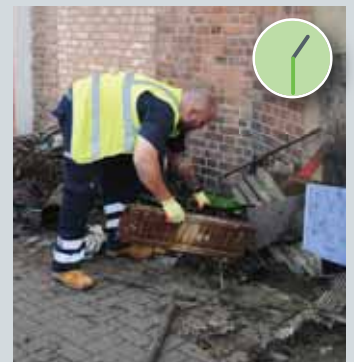


**10.30am:** After these two large flytips, Tom returns to Smugglers Way to unload his full van. He then collects a flytip on Freedom Road.



**12.30pm:** Tom empties and re-lines five bins along the riverside walk near Battersea Bridge.

**1.30pm:** Tom cleans up the rubbish collected by the Wandle Trust following their weekend clean-up of the Wandle. This is then brought to Smugglers Way to unload the van for the final time. Some items, such as fridges, are separated for recycling. The rest is immediately put into a yellow container and compacted.



**2.30pm:** Tom heads back to the depot to prepare rosters for his team for the following day before his day ends at 3pm.

**3pm:** At Smuggler's Way the compacted waste is picked up by the large red crane and put onto a barge. The full barge is pulled by tug along the river to the Belvedere energy-from-waste plant. Times for this part of the process vary according to the tides, but the whole process takes no more than 24 hours. The process is used to generate energy which is fed into the national grid.



## How you can help keep Wandsworth clean

- Leave your waste and recycling bags out on the correct day each week. See [M wandsworth.gov.uk/waste](https://www.wandsworth.gov.uk/waste) to check your collection day.
- Show your support on Twitter using the hashtag #KeepWandsworthClean
- Report flytips on the council website [M wandsworth.gov.uk/flytipping](https://www.wandsworth.gov.uk/flytipping)
- Pass on evidence that could help identify a flytipper in confidence to [M flytipwitness@wandsworth.gov.uk](mailto:flytipwitness@wandsworth.gov.uk)
- Set up your own clean streets initiative with support from the Wandsworth Grant Fund. Visit [M wandsworth.gov.uk/wgf](https://www.wandsworth.gov.uk/wgf)
- Contact [E Jessica.lewis@richmondandwandsworth.gov.uk](mailto:Jessica.lewis@richmondandwandsworth.gov.uk) to find out more about how you can help #KeepWandsworthClean



The first draft designs for the regeneration of a major Roehampton housing estate were consulted on during September and October.

Wandsworth Council and Redrow Homes are proposing to redevelop parts of the Alton estate, including newly-built homes for all secure council tenants and owner-occupiers on their estate, with around 1,000 new homes. Local facilities would also be improved including more shops, as well as a new library.

Feedback from consultation, as well as the 2014 Alton Area Masterplan and subsequent planning guidance, will help shape the final plans in the coming months, which will be exhibited early in 2018 ahead of a planning application being submitted.

# New council homes taking shape

**New council homes are currently being built in Battersea, Putney and Tooting.**

In Battersea 57 new homes are being built on the Patmore and Savona estates. The developments, which are a few minutes' walk from Battersea Power Station, are expected to be complete from the summer 2018, with priority for estate tenants who want to downsize, or overcrowded households - once these households move in, the homes they leave behind will be offered to other local people in need, creating chains of beneficial moves. The new homes will be named after local First World War soldiers who were awarded the Victoria Cross. The picture shows building work on one of the blocks in Stewarts Road.

Two new, three-bedroom semi-detached houses in Limsfield Avenue, near Wimbledon Common, are undergoing final inspections to check that they're ready to be let out to council tenants. The properties include high-efficiency boilers and photovoltaic

panels to reduce energy bills, while adjoining pavement renovation work has also been carried out.

In Nutwell Street, Tooting, two new three-bedroom, semi-detached council houses are being built and are expected to be complete later this year, when they will be offered to local people on the council's housing register.

The council's housebuilding programme has seen more than 250

homes built on under-used spaces on council land with the current pipeline of development due to deliver hundreds more homes. Because there are no land purchase costs it offers exceptional value for money and other local authorities, such as Hackney and Southwark, have adopted the same approach.

Including a development of 71 council homes for social rent to be built at Battersea High Street, this represents a total investment of around £70million in building new council homes across the borough.

Taken together with housing association partners, 419 new homes for low cost rent and shared ownership were built in the past year, with 1,685 forecast for the next three years.



Stewarts Road



# Crackdown on tenancy fraud

**Forty eight council and housing association homes have been recovered from fraudsters and let to people in genuine need during the past year, saving an estimated £2.8million in temporary accommodation costs.**

Tenancy fraud can take many forms, including unlawful sub-letting, retaining a council home while living elsewhere, or falsifying a claim for succession.

The council rents out around 17,000 properties in Wandsworth. Each year thousands of spot checks are carried out to ensure that these flats are occupied by their legitimate tenants.

Housing spokesman Cllr Clare Salier said: "We won't hesitate to take action against fraudsters who are not only depriving homeless and overcrowded households of a home, but who are also cheating other law-abiding, rent-paying tenants and Wandsworth taxpayers."

The investigations were the result of joint working between the council, South London Legal Partnership and South West London Fraud Partnership.

Anyone with information about council homes being sub-let or misused can report this to the South West London Fraud Partnership on [☎ \(020\) 8871 8383](tel:02088718383) or email [✉ SWLFP@wandsworth.gov.uk](mailto:SWLFP@wandsworth.gov.uk)



## Pollution solution

**Children at Smallwood School in Tooting have been learning about how to reduce air pollution. They were visited by the borough's volunteer Air Quality Champions.**

After a special assembly, student councillors played giant air quality-themed games of snakes and ladders in the playground. Later, at pick-up time, Air Quality Champions spoke to drivers about the importance of turning off car engines if they are waiting for more than a minute or so. Restarting engines uses less fuel and creates less pollution than leaving them running.

For more information about the work being carried out locally to improve air quality. Visit [www.wandsworth.gov.uk/airquality](http://www.wandsworth.gov.uk/airquality). To find out how to become an air quality champion, visit [www.wandsworth.gov.uk/AQC](http://www.wandsworth.gov.uk/AQC)



## Heart Beat help

The World Heart Beat Music Academy based in Wandsworth has launched a Friends' Scheme. Local residents and businesses can donate between £6 and £200 a month to help the academy in its work giving disadvantaged young people the opportunity to learn and perform music. Find out more at [www.worldheartbeat.org](http://www.worldheartbeat.org).

## Money advice

Free, confidential monthly debt and money advice sessions will be held in the Western Area Housing Office, Holybourne Avenue, Roehampton. The first is on November 27. To find out more, contact the council's financial advice team on [☎ \(020\) 8871 6953](tel:02088716953) or email [✉ financialinclusion@wandsworth.gov.uk](mailto:financialinclusion@wandsworth.gov.uk)

## Happy Birthday

Tooting Women's Institute has celebrated its first anniversary. Over the past year the group has grown to more than 70 official members and has a wide ranging programme including a wine tasting a careers workshop and a self-defence class. follow [@TootingWI](https://twitter.com/TootingWI) on Twitter.

## Join a watch

Neighbourhood Watch is a group of neighbours working together to prevent crime in their street or area. Watches are in regular contact with the police and the council's Community Safety Team and members are less likely to become victims of burglary. To find out how to join an existing watch or start a new one visit [www.wandsworth.gov.uk/neighbourhoodwatch](http://www.wandsworth.gov.uk/neighbourhoodwatch)



Volunteers help out

# Embassy staff meet the neighbours



The new Embassy

**US Embassy staff moving to their new home in Nine Elms have been getting to know the local community.**

They helped spruce up the Savona and Carey Gardens Estates as part of the US Embassy's annual Day of Service. The new Ambassador Robert Wood Johnson, on his first official UK engagement, joined Wandsworth Council leader Ravi Govindia to welcome volunteers from across the local community, including the Embassy, the council, Savona Residents' Association, local residents from the Savona and Carey Gardens Estates and members of the local business and developer community.

Ambassador Johnson said: "As we move our new American ground to the Nine Elms neighbourhood, we do so in the spirit of working with the local community."

The Day of Service is the latest event in the US Embassy's programme of community engagement alongside Wandsworth Council including cultural, horticultural and volunteering initiatives.

Work on the Embassy building, part of the Embassy Gardens development near Battersea Power Station, is approaching completion. It will include a moat and will be powered by the sun using photovoltaic cells that convert sunlight to energy.



Cllr Govindia with Robert Wood Johnson



Let's  
**talk**

Your  
pull out guide

# A brighter borough for all



## Help us make Wandsworth the best place to live in London

We all share the same desire for the place where we live to be the best it can be. A place that is clean, safe and easy to get around. Somewhere with great schools and parks. A place where people of all backgrounds get on, that is affordable to live and where people can make the most of what is around them.

This is your council's mission: to do everything we can to improve Wandsworth as a place to live, visit, work and study.

It is a big job and even though we don't always get everything right, we care passionately about doing the right thing for you and your family. These days with less money at our disposal that job is getting tougher which sometimes means having to make difficult choices while looking to do things differently.

That is why I hope that you will spend a few minutes to read our current plans and priorities for your borough and then let us know what you think. In doing so I want this to be part of a bigger conversation about the type of place we want Wandsworth to be and how we can work together to make the place we live the best it can be. Over the next year we are going to be getting out and about to listen to as many people as possible.

*Thanks for your time and I look forward to hearing from you.*



Cllr Ravi Govindia  
Leader of  
Wandsworth Council

Find out more and tell us what you think at  
[wandsworth.gov.uk/brighterborough](http://wandsworth.gov.uk/brighterborough)

## Our priorities

# Low Council Tax



➔ Keeping your council tax bill as low as possible while providing the best possible quality of service. On average people in Wandsworth pay the lowest council tax in the country.

### Did you know?

The average council tax bill in Wandsworth has gone up by just 3% since 2007 (£19). In comparison the average energy bill has increased by 50% (£416).

The average Londoner pays twice the amount of council tax that people in Wandsworth pay.

### What we are doing:

Since 2010 we have saved £140 million.

Our services and staff costs are shared across Richmond Council, which saves you more than £10 million a year.

There are lots of other things that we are doing to keep your council tax low. We have sold our redundant buildings, we are moving as many of our services as possible online to reduce the cost of running a call centre and we are looking at ways to bring in income – for example by bringing the Go Ape leisure attraction to Battersea Park.





## Our priorities

# Cleaner, greener and safer neighbourhoods

- ➔ Working with our community to keep your streets clean and safe.
- ➔ Improving our parks and open spaces.
- ➔ Championing Wandsworth as an environmentally friendly borough, great for cycling and with great access to public transport.

## Did you know?

Wandsworth is the safest inner London borough

We clean our busiest streets every day 7 days a week

We make 15 million bin collections every year.

## What we are doing:

### Making Wandsworth cleaner

We operate a 7-day-a-week street cleaning service with busy town centres cleaned up to 5 times a day. We also take a proactive approach to enforcement by handing out fines to the small minority of people who litter.

### Collecting waste and recycling

We still collect your waste and recycling every week. Three out of four councils in the UK do this on a fortnightly basis.

### Improving our roads

We are spending £5 million resurfacing roads and repairing or replacing footpaths in the next 12 months.



collecting  
your waste  
& recycling  
every week



## Replacing street lights

We are replacing 18,000 street lights with LED bulbs which are much more energy efficient – saving taxpayers £400,000 a year.

## Working with police

We work closely with the police and our communities to keep Wandsworth safe. We do this by working as a team to prevent crime from occurring and to agree local priorities.

## Improving parks

We are spending hundreds of thousands of pounds improving our parks every year.

Over the past 18 months this has included £900,000 worth of improvements to Battersea Park, which includes gym and studio refurbishment, tennis court resurfacing, new park benches, redecoration of the main gates and upgrades to CCTV - paid for in part by Formula E.

## Opposing Heathrow expansion

We continue to strongly oppose the expansion of Heathrow Airport, believing that it would be detrimental to the quality of life in our borough.

## Delivering an excellent library service

We loan out nearly 1.5 million books each year across our 11 libraries.



## Tackling air pollution

We have set up a task force to reduce air pollution. Our measures include lobbying the Mayor for an outright ban on diesel buses in Putney High Street, helping schools to develop School Travel Plans to reduce vehicles on the road, working with developers to manage construction safely, enhanced street cleaning around development sites, the championing of car clubs, and introducing a free airTEXT messaging service warning residents when high pollution levels are forecast.

## Encouraging car clubs

There are more car club members in Wandsworth than any other part of London, with 14,000 people signed up. We think they are important because they help to relieve congestion on our roads.



## Encouraging cycling

We want Wandsworth to be a cycling-friendly borough which is why we brought the Santander Cycle Hire scheme here. We have worked with TfL to connect Wandsworth to major cycling routes while we are also proposing a further network of cycling routes in quieter roads known as Quietways.

## Protecting pubs

We are protecting 140 community pubs from redevelopment by setting out planning guidance which recognises the historic, architectural and community value of pubs.



## Our priorities

# Help to get on in life

- ➔ Bringing new job opportunities, building more affordable housing for residents and workers and making improvements to community facilities and transport.
- ➔ Making our schools even better and helping families give their children the best start in life.
- ➔ Supporting young and old to stay fit, healthy, active and independent.

## Did you know?

Across the borough we are helping to bring 25,000 new permanent jobs and nearly 2,200 affordable homes.

The first new tube station in the borough for 90 years is being built at Battersea Power Station – along with another one nearby at Wandsworth Road.

## What we are doing:

### Bringing major improvements to Wandsworth

We are attracting billions of pounds of new investment to our borough. As well as overseeing a new district for London at Nine Elms, we are bringing major improvements to Wandsworth town centre, Roehampton town centre and Winstanley and York Road estates in Battersea.



## The improvements planned include:

- A new community and town centre at Nine Elms which will bring two new tube stations to the borough along with 20,000 new homes and 25,000 permanent jobs. Nine Elms will also be home to Apple UK and the US Embassy.
- We are developing plans with Transport for London to greatly reduce the amount of traffic in Wandsworth town centre by re-routing the A3 and South Circular to north of the town centre. The plans will support the £600 million regeneration of the former Ram Brewery into a new cultural quarter with new cafes, exhibition spaces and a microbrewery along with new homes, including shared ownership.
- Building better homes for existing council tenants at Winstanley and York Road estates, along with a new leisure centre, children's centre, library and redesigned open spaces with improved access to the wider area.
- Bringing major improvements to Roehampton town centre and the Alton estate, with better homes for existing council tenants, new housing, new shops and community facilities and better designed streets and open spaces.

### Delivering homes that are more affordable

We are helping as many people as possible find a home that is right for them and their family through a range of products and help.

This ranges from providing grants which help our tenants buy a home on the open market, through to a scheme which enables all residents to purchase part of a home rather than having to pay the full market value.

In the past two years we have delivered more than 1,000 homes that are more affordable to our residents and designed to meet a range of housing needs. Plans are now being developed to deliver another 1,000 homes by 2025, 50% of which will be affordable.

### Improving our housing stock

We are delivering £120 million worth of improvements to our 33,000 council managed properties. The works range from rewiring to new lifts and windows. Sprinkler systems will also be installed in all blocks that are above ten storeys in height.



Find out more and get involved at [wandsworth.gov.uk/brighterborough](https://www.wandsworth.gov.uk/brighterborough)



## Helping people into jobs

We help people who are looking to get back into employment or change their career, often gaining new skills or qualifications in the process. We do this by matching your ambitions with employment opportunities. Since 2013 we have helped 750 Wandsworth residents into work. To find out more search 'Wandsworth Workmatch'.

## A business-friendly borough

Wandsworth has been recognised as the best small business-friendly borough in London - we are proud to be a place of creators, makers and innovators stretching from Putney all the way through to London's newest neighbourhood at Nine Elms.

We are doing everything we can to make Wandsworth a great place to invest, which ranges from our support for town centres through to holding Wandsworth Enterprise Week which is an annual programme of help and advice. Our 'Your Business, Your Growth' business support programme supported over 500 existing businesses and helped 67 new businesses to start. The programme included networking opportunities, one-to-one advice sessions as well as specialist support for businesses that are in the food, hospitality and digital sector.

## Making our schools even better

We are proud of the quality of schools in Wandsworth which is down to the hard work of headteachers, teachers and governors. Nearly all our schools (94%) are good or outstanding. Of those 44% are outstanding, which is twice the national average.



## Supporting our families

We provide a range of help, support and advice to families. This includes children's centres which offer a range of activities and specialist services, through to more intensive support to families experiencing problems.

## Helping stay fit, active and independent

Whatever stage of life you are at we want you to get the most out of it by staying fit, active, healthy and independent.

We provide support and help for people of all ages, from physical activity programmes through to more specialist help for people experiencing difficulties to get them back on their feet.



# shared lives



**Do you like helping people?  
Do you enjoy sharing your interests with others?  
Do you have a spare room?**

**If your answer is YES then why not become a  
Shared Lives Carer!**

**Sharing your home will support someone to live an  
independent, active life.**

**No qualifications or experience needed. Full training provided.**

For more information about Shared Lives at Certitude  
please contact us on 020 8772 6211

Daniel Luscombe, Shared Lives Manager at [dluscombe@certitude.org.uk](mailto:dluscombe@certitude.org.uk)

Alexandru Baci, Shared Lives Administrator at [abaciu@certitude.org.uk](mailto:abaciu@certitude.org.uk)

 @CertitudeLondon  @Certitude [www.certitude.org.uk](http://www.certitude.org.uk)

**certitude**



# WIN an MBNA Thames Clippers Family Roamer ticket

To celebrate the launch of the MBNA Thames Clippers service from Battersea Power Station pier this autumn, we have five Family River Roamer tickets to give away.

The Family River Roamer ticket entitles 2 adults and up to 3 children (under 15 years) a chance to explore London by boat, with unlimited hop on and hop off travel all day from 9am on a day of your choice on MBNA Thames Clippers' services: the fastest and most frequent fleet on the river.

For a chance to win one of the five family tickets, answer the following question.

Apart from Battersea Power Station, name one other River Bus pier served by MBNA Thames Clippers in the borough of Wandsworth.

One entry per person.

This competition is not open to employees of Wandsworth Council or Anschutz Sports Holdings Limited (trading as AEG Europe).

River Roamer tickets can be used in the Central and East Zones routes but are not valid in the West Zone or on River Bus Express services for events at The O2 arena.

Email answers to

[brightside@wandsworth.gov.uk](mailto:brightside@wandsworth.gov.uk), with River Roamer in the subject line, or send them to Brightside, Rm 143c, Wandsworth Town Hall, London SW18 2PU.

Closing date is

November 24, 2017.

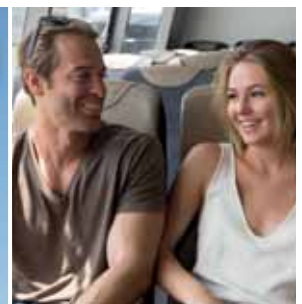


## Battersea Power Station Pier Now Open

### Travel in style with MBNA Thames Clippers

Fast and frequent River Bus services now calling at Battersea Power Station Pier every 20 minutes at weekday peak times and every 30 minutes in the daytime and at weekends

- Embankment Pier in 15 minutes
- Blackfriars Pier in 20 minutes
- Canary Wharf Pier within 40 minutes



[mbnathamesclippers.com](http://mbnathamesclippers.com)

[@thamesclippers](https://twitter.com/thamesclippers)

[/thamesclippers](https://facebook.com/thamesclippers)

[/thamesclippers](https://instagram.com/thamesclippers)



# Nine Elms opens up

**Nine Elms is coming alive, with new businesses arriving and new sections of river path opening up to the public for the first time in years.**

New transport links are making the area increasingly accessible. A new pier is opening at Battersea Power Station and the river bus operated by MBNA Thames Clippers will provide another transport link to and from central London.

The new service will see journey times of less than 20 minutes from Battersea Power Station to Embankment. Find out how you could win a family ticket on the previous page. The Northern Line extension is also on track to open by 2020 (see page 3).

Walking around Nine Elms, you'll see new parts of the Thames riverwalk appearing as the old industrial South Bank is opened to the public and brought to life.

A new section opened earlier this year at Battersea Power Station's Circus West Village, where new shops, restaurants, bars and pop ups are starting to open.

It's also home to new outdoor sculptures unveiled in September as part of a programme of rotating public art. Last month a section further up the river past Battersea Park outside Lombard Wharf opened for the first time in 120 years.

Further new sections of the Nine Elms Thames riverside will open in a matter of weeks, with the first at Bourne Valley Wharf, halfway down Nine Elms Lane.

The area will boast a new temporary pavilion, improved pathway, seating and planting, and a great new vantage point from which to enjoy the river.

A new Nine Elms Winter Festival starts on November 18 with a street market and Christmas lights ceremony at Embassy Gardens. Other family activities include illuminated dance processions, DIY musical performances, parcour workshops and more.

Next year the area will be welcoming the new US Embassy. The Embassy has already been building community ties in Wandsworth for some time – see page 14. Visit [nineelmslondon.com](http://nineelmslondon.com).





# Grants to grow your community

## Applications are now being accepted for Round seven of the Wandsworth Grant Fund.

The fund supports the work of local not-for-profit organisations, including projects to support the arts, smarten up neighbourhoods, help young people, improve people's health and encourage good citizenship and civic engagement.

A wide range of projects shared £114,000 in June from Round five funding, including schemes to keep young people away from crime, youth support services and help for homeless people and people with Sickle Cell Disease. The recipients of Round six, funding will be announced in January.

The deadline for the Wandsworth Grant Fund round seven is 18 December.

Find out how to apply, plus get information or advice and support events at [www.wandsworth.gov.uk/wgf](http://www.wandsworth.gov.uk/wgf) or call [\(020\)8871 6203](tel:02088716203)



The **Doddington and Rollo Community Roof Garden** has launched two clubs after receiving Round 3 funding, with match funding from the Battersea Power Station Foundation. A therapeutic gardening club for cancer patients ran earlier this year in partnership with Paul's Cancer Support Centre and Thrive and a free afterschool gardening club for young people will run each Tuesday during November. Visit [facebook.com/DoddingtonGarden](https://facebook.com/DoddingtonGarden).



**Disability Sports Coach** runs a community sports club for young disabled people, providing a wide range of sports in a supported environment with specially-trained coaches and adapted equipment. It received a Round 4 grant in January.

**CommuniTech**, runs monthly 'Tech and Tea' sessions in borough libraries where digital volunteers are on hand to assist anyone with tech queries. The group received a grant from Round 5 of the Wandsworth Grant Fund in June, which has enabled them to run far more events. Get details of upcoming events on [facebook.com/CommuniTechLondon](https://facebook.com/CommuniTechLondon) or email [communitelondon@gmail.com](mailto:communitelondon@gmail.com).





# Faster surfing

**More people living on estates have been hooked up to some of the fastest broadband in London.**

The target is to make the service available to more than 10,000 properties by the end of the year, and more than 20,000 over the next few years.

Wandsworth is working with a company called Community Fibre Ltd to install its 'Gigafast' broadband in council-managed blocks. So far more than 5,500 homes across the Savona, Patmore, Carey Gardens, Doddington, Kambala, Rollo and Surrey Lane estates have the capacity to access the service.

Properties on the Winstanley and York Road estates, St James Grove and the Ashburton, Wendlesworth, Arndale, William Willison and Alton estates will be next in line. Work will be carried out over the next few months.



## Park survey

The council is creating a Management and Maintenance Plan for King George's Park in Wandsworth to establish its future care and ensure local people continue to benefit from it. A survey is being run to establish the value that people attach to the park, how they use it and any changes they would like to see. The more responses received, the better the plan will reflect local people's wishes. Take the survey online at <https://haveyoursay.citizenspace.com/wandsworthecs/king-georges>. The draft plan will be published in the spring and there will be a chance to comment further then.

## Join the WI

A new Battersea Women's Institute group meets on the third Tuesday evening of each month at Westbridge Draft House pub, 74-76 Battersea Bridge Road. The next meeting will be on November 21. If you are interested call ☎ (020) 7738 1218 and leave your name and phone number.

## Trust leader sought

The Wandsworth Community Safety Trust is looking for a new chairman following the sad death of Cllr Jim Maddan. The Trust provides funding for projects including security, safety and crime prevention measures run by local groups or charities and runs a lock and key safe fitting service for older residents. To apply email brief details of your experience in security, safety and crime prevention and an idea of what you feel they can bring to the Trust to both [thestrats@btinternet.com](mailto:thestrats@btinternet.com) and [robertagreaves41@gmail.com](mailto:robertagreaves41@gmail.com). The closing date is November 28.

## Help make the party happen



**This year the Rotary Club of Battersea Park is organising its 55th free Christmas Day Lunch and Party for older people in Wandsworth and is looking for volunteers and donations.**

Guests are transported to and from the heated Marquee in Battersea Park and given a full Christmas Lunch, a goody bag to take home, carol singing, bingo and dancing. With almost 500 guests each year, the event relies on volunteers.

It costs rotary around £45 per guest to put on the event.

Any local businesses, organisations or residents that are willing to donate money to help pay for the event are urged to get in touch.

Visit [rotarychristmasday.org.uk](http://rotarychristmasday.org.uk) for details of how to volunteer or donate.



# Your Business ■ Your Growth ■ ■ ■ ■



Supporting business development and growth  
for all businesses in Wandsworth

## Join the Digital Hub

**Local businesses are being urged to join a 300-strong network of digital and tech firms.**

Wandsworth Digitech was set up earlier this year as part of the council's Your Business Your Growth package of business support. The aim was to create a self-sustaining network of companies that provides an ongoing source of support, expert advice and networking opportunities to the borough's burgeoning tech sector.

Last month more than 135 people went to the Next in Tech conference, which was the culmination of Wandsworth Digitech's first few months.

Digitech co-founder Soraya Lavery said: "The point is to help businesses understand, use and build on the technology they already have in place. It is also an opportunity for local technology businesses to showcase their products and build

partnerships and friendships with the businesses that they serve."

To find out how Wandsworth

Digitech can help you, visit [wandsworthdigitech.com](http://wandsworthdigitech.com), email [hello@wandsworthdigitech.com](mailto:hello@wandsworthdigitech.com), call 020 8144 7993 or follow @digitechW. Sign up for business e-news at [www.wandsworth.gov.uk/e-news](http://www.wandsworth.gov.uk/e-news).

The fifth Wandsworth Enterprise Week starts March 5, 2018. Booking will open in December. Local businesses interested in finding out about the range of sponsorship opportunities available should contact Jenni Asiana [jasiama@wandsworth.gov.uk](mailto:jasiama@wandsworth.gov.uk) or [visit wandsworthenterpriseweek.biz](http://www.wandsworthenterpriseweek.biz).



*Discover how positive Putney is and...*

# kick off the Christmas festivities

Church Square, Putney, SW15 2JQ

**Saturday 2nd December**  
Winter Wonderland 12:30 to 17:30  
light switch on at 17:00

**Sunday 3rd December**  
Dress as nativity character and have your photo taken with the Three wise men and real camels from 11:00 to 15:00

Find out more, sign up to the new website  
[www.positivelyputney.co.uk](http://www.positivelyputney.co.uk)  
for local events and offers in Putney.

AD.1202(10.17)

**Positively Putney**  
BUSINESS IMPROVEMENT DISTRICT

Photo credits: Clownfish Events



# Get ready for winter

**Living in a cold home, particularly if you are older or have a long term health condition, can cause serious health problems.**

The Wandsworth and Richmond Assessment Point (WRAP) offers free home visits for advice and information on heating, insulation, benefits, and health.

WRAP is a one-stop shop providing support including:

- Help and advice on staying warm and well for less
- Benefit checks and support with debt issues
- Advice on local services that will help keep you well

Any resident can contact WRAP. They will assess your needs and, if required, visit you at home. You will also get free devices to cut your water and energy use.

The council also works with the charity Leonard Cheshire Disability to provide emergency support such as advice and winter warmer packs in the case of a cold snap, and with Age UK to provide a handyman service. If you need their help you can request it from WRAP.

Find out more and see if you are eligible for the service at [thinkingworks.co.uk/wandsworth-wrap](https://www.thinkingworks.co.uk/wandsworth-wrap).

To book a visit call [0800 118 2327](tel:08001182327) or email [enquiries@thinkingworks.co.uk](mailto:enquiries@thinkingworks.co.uk)

For emergency support during the winter months call Leonard Cheshire Disability on [\(020\) 7223 0350](tel:02072230350)

People aged over-65 or those with a long-term health condition are also urged to get a flu jab. You can arrange for your vaccination through your GP or local pharmacy.

Leonard Cheshire Disability were supporting Michelle Niles and her family with emergency help and referred her to WRAP.

After visiting Michelle at home, the WRAP advisor found the central heating had not been working for three years and worked with a local heating installer to fix the boiler for £80.

“ I cannot thank them enough, After three years we finally have heating and hot water. This makes such a difference to our lives. I am so grateful to WRAP.

Michelle Niles





# Get yourself tested

National HIV Testing Week 2017 starts on November 18 and people in Wandsworth are being encouraged to get a **FREE** and confidential HIV test.

Early diagnosis and treatment enable people to live a healthy normal life and lower the risk of passing the virus on to anyone else. Checking your HIV status is important for everyone, but particularly so for groups where HIV rates are higher, including men who have sex with men, and black African men and women.

**FREE** and confidential HIV testing is available in a range of health settings including GP surgeries and the sexual health service in Balham Health Centre and Queen Mary's Hospital, Roehampton. For information and bookings call 0333 3002100. Lines are open from 8am to 8pm Monday to Friday.

If you have any questions about national HIV Testing Week, visit [hivpreventionengland.org.uk](http://hivpreventionengland.org.uk). You can also follow NHTW on Facebook and Twitter and tweet using #HIVTestWeek and #imtesting.

For details about sexual health services in Wandsworth visit [www.wandsworth.gov.uk/sexualhealth](http://www.wandsworth.gov.uk/sexualhealth)



## Have you still not had your flu jab?

If you're 65 or over or you have a long-term health condition, flu can be serious.

That's why you're eligible for a free flu jab.

Don't put it off. Get your flu jab straight away.

**STAYWELL  
THISWINTER**

[nhs.uk/staywell](http://nhs.uk/staywell)



Cheril Sowell, Nurse



# Christmas in your town centre

## Nine Elms

**Saturday November 18, 10am-5pm.**

Embassy Gardens Market and Christmas lights switch-on. Street food, live music and more. This event kick-starts a winter festival across Nine Elms and Battersea.

## Battersea

**Friday November 24 from 4.30 pm,  
Sunday November 26 11am-6pm.**

Northcote Road's annual light switch on including carol singing, Hamptons Santa's grotto and more. On Sunday Battersea's famous shopping street will host an additional 75 stalls offering a variety of Christmas gift ideas, plus street food, pop-up bars and speciality drinks stalls.

**Tuesday December 5**

Enjoy Christmas Carols on Battersea Square from 6.30pm and the Christmas tree switch on at 7pm.

## Earlsfield

**Friday December 1, 5.30pm**

Earlsfield Business Network is organising Christmas activities at St Andrews Church and Waynefleete Street including Santa's Grotto, school choir, Eddie Katz, stalls and a Christmas light switch on.

## Wandsworth Town

**Saturday December 2**

Activities all day around the town centre including a grotto, children's activities a lantern parade, Christmas market and festive lights switch on at 4pm at All Saint's Church.

## Putney

**Saturday December 2, 12.30pm-5.30pm**

A winter wonderland themed afternoon including stalls, a snow globe, reindeer rodeo and a stage. Christmas tree and Christmas light switch on is at 5pm.

## Balham

**Sunday December 3, from 1pm**

Christmas celebrations including nativity scene with Sam the Donkey, entertainment and market stalls at Bedford Hill Place and Hildreth Street. The Christmas tree and light switch on is at 4:30pm.

## Tooting

**Wednesday December 6, from 4pm**

Carol singing in Mitcham Road from 4pm. The Christmas tree and light switch on is at 5pm.

**Friday December 8, 4pm**

Mitcham Lane Carol singing, Christmas Tree and light switch on at the corner of Mitcham Lane and Thrale road

**December 1-3**

Tootsmas, from the people who bring you Tootopia including a street food takeover, Christmas arts and crafts fair, festive Pooch Parade and Foodie trail.

**Saturday December 16, 4pm-7pm**

Furzedown Community Network Christmas Market in Moyser Road – stalls, Father Christmas, mulled wine and minced pies

## Southfields

**Wednesday December 8**

Christmas activities, grotto and the Christmas Tree and light switch on at 5pm in Replingham Road.





# what's on?

EVENTS FOR NOVEMBER 2017  
TO MARCH 2018



## Christmas at All Saints Church

**2 December, 4.20pm** Wandsworth lights at All Saints Church

**17 December, 6pm** Parish Carol Service at Holy Trinity Church

**24 December, 10.30am** Morning Service at All Saints Church, **3pm** Nativity/Trinity Tot at Holy Trinity Church, **11pm** Christmas Eve Communion at Holy Trinity Church

**25 December, 11am** Christmas Day Service at Holy Trinity Church

Wandsworth and Holy Trinity Church, Beaumont Road 020 8788 4606 office@wandsworthparish.co.uk

### How to be listed

Send details (including access for people with disabilities) by **Monday February 13** to:whatson

@enablelc.org

We cannot guarantee that your entry will be inserted.

This is a free service. The information in this guide has been provided by the advertisers themselves.

Wandsworth Council and Enable accept no responsibility for the accuracy of the information or for any event not organised by the council or Enable.

What's On is compiled by Enable Leisure and Culture, a registered charity.

**enable**  
leisure & culture

Children's events outlined in yellow

### 25 November to 3rd December 2017

#### National Tree Week

Wandsworth Tree Wardens, in cooperation with Wandsworth Council, are pleased to invite you to The National Tree Week event that will take place at Coronation Gardens Park in Southfields on Friday 1 December from 11am to 12pm

### Saturday 25 November 2017, 11am to 2pm

#### Putney Christmas Fair Committee

#### Christmas comes early to Putney in 2017

Children can meet Father Christmas, receive a small gift, then write their wish-list in a letter and post it in Santa's very own post box. A couple of weeks later a personalised reply

will be sent to each and every child in the post.\*

Everyone is welcome to come to this special event. There will be plenty to do for all the family from our famous hunt the turkey competition to traditional festive favourites such as a toy and bottle tombola, a special raffle, bouncy castle, face painting, arts and crafts to buy and make, mulled wine and mince pies, hot dogs, tea and cakes. There will also be live music from our local Children's choir and you can even buy your Christmas tree or wreath at the fair too! All proceeds from the Bazaar will go to charities supported by the Parish of Putney.

**Admission is free. \*A small cost applies for**

#### games, activities and refreshments etc. inside the fair.

Parish of Putney Christmas Bazaar, St. Mary's Church, Putney High Street (by Putney Bridge) For further information please contact: www.stmarys.parishofputney.com or katie@katiebishop.co.uk 07974 360 472

### Saturday 2 December, 11.30am to 2.30pm

#### St Barnabas Church Christmas Fair

St Barnabas Church on Lavenham Road in



Southfields will be hosting its annual Christmas Fair. Browse the Christmas market stalls, sample some festive refreshments, enjoy family entertainment and visit Father Christmas.

**Admission is £2 per adult, £1 for concessions and children go free.**

www.stbarnabas-southfields.org.uk

### Saturday December 16, 4pm-6.30pm

#### St Mary Magdalene Church, 6th Annual Christmas Tree Festival

Musical entertainment, Father Christmas, home produce and Christmas floral decorations. Teas and mulled wine served all afternoon.

**(Pictured left)**

212 Trinity Road, Wandsworth Common.

# what's on?

EVENTS FOR NOVEMBER 2017  
TO MARCH 2018

## Tara Arts

Friday 17 & Saturday 18 November,  
Friday 11am & 2pm, Saturday 11.30am & 3pm

### Prince of Fire

Forest Tribe Dance Theatre brings new relevance to the ancient tale of Diwali. When Ravana the ten-headed demon draws darkness over the world, can Prince Rama and Princess Sita's love and courage bring back a glimmer of light? Join Hanuman's monkey army in Forest Tribe Dance Theatre's new show and help cast radiance among the darkness. Based on the story of Diwali, this sumptuous performance with sculptural set, original score, dance, projections and puppetry is a pearl of hope in a sea of uncertainty.

December 6-January 6

### Aladdin Goes Bollywood

Continuing its hit pantomime tradition, Tara Arts presents a new version of the traditional Aladdin story - complete with magic lamps, flying carpets, genies, jewels, songs, music and rap!  
Tara Arts, Garratt Lane, Earlsfield  
Tara-arts.com.



December 6-January 6

### Scrooge and the Seven Dwarves

After three sell out Christmases, The Sleeping Trees are back by popular demand with last year's smash hit show for all the family! They are a multi-award winning, three-piece, comedy trio and that like to spend their time creating surreal, physical and fast-paced comedy.  
By The Sleeping Trees  
Theatre503, The Latchmere,  
503 Battersea Park Road, London SW11 3BW  
Theatre503.com  
020 7978 7040

## Pump House Gallery

4 October to 17 December 2017

### David Panos - Time Crystals

Wandsworth Council's Pump House Gallery presents an exhibition of recent work by artist David Panos. Based on ongoing research into the relation between cultural form, history and memory, the presentation examines the contemporary revisiting of motifs from the 1980s and 1990s, in particular from the 'alternative' and 'rave' subcultures. Through the lens of the artist's personal recollections of the period around 1989 (dubbed by political scientist Francis Fukuyama at the time as 'The End of History') the exhibition looks at the ways that fashion, dance and gestures have anticipated and reflected macro political and social change but also hold and transmit shifting meanings across cycles of revival. The work reflects on how twenty-first century digital media, industrialised 'fast' fashion and the deepening penetration of institutions into popular cultural histories transform how we might interpret and remember the past. The exhibition is accompanied by a public programme of discussions, performances and activities designed in dialogue with the artist. This exhibition is supported by Wandsworth Council.



4 October to  
17 December 2017

### A Dance and Gesture Archive

Designed in dialogue with the exhibition *Time Crystals* by David Panos, Pump House Gallery presents as part of our Inhouse Programme 'A Dance and Gesture Archive' in the gallery's Project Space, and an accompanying exciting programme of events and activities for children and adults. Audiences are invited to explore the exhibition's themes and ideas through

gesture, movement and dance. Visitors of all ages can drop in and take part by dancing to their favourite song on camera and recording it in front of a green screen. The final archive of all the videos produced over the course of the project will be shown in the Project Space during the final two weeks of the exhibition. Join the gallery team for free drop-in family workshops throughout November and December to explore dance and gesture with a

dancer/choreographer, and look at how fashion and style are important to culture.

**Upcoming family workshops:**  
19 November and 3 December, with the final installation of 'A Dance and Gesture Archive' footage from 6 to 17 December.

Drop-in workshops for all ages. Children must be accompanied by an adult.  
**Free, no booking required**

## Get Involved

### Wandsworth Arts Fringe 2018

As it approaches its tenth year, Wandsworth Arts Fringe is calling out once again to the best and most bonkers creative talent to take part in next year's festival. WAF is completely inclusive and open to all art forms - the more the merrier! If you know of any artists or creative producers who want to showcase their talent - or Wandsworth venues who would like to host exciting events and be on the WAF map. Visit [www.wandsworthartsfringe.com](http://www.wandsworthartsfringe.com)



## Battersea Arts Centre

For further information and tickets please visit [www.bac.org.uk](http://www.bac.org.uk)



### 28 November to 30 December

#### Sponge Turned On Its Head

Baby-only performances (for ages 4-18 months) Sundays at 10:30am (excl. Xmas Eve) and Saturday 23 Dec at 10:30am  
**Price: £10 - £12.50**  
For ages 4 months - 4 years

### 2 December, 7pm

#### Can You See Me Now? Misrepresented

Follow the experiences of often unheard young women finding their way through life - stone stepping through 'controlled care', confusing expectations, raging histories, lies, love and recovery. Explore your inner and outer worlds: what we share, what we hold inside, the different roles we play in life, how we know ourselves and how we are perceived. Daughter, Sister, Mother, Looked-After-Child, Miss Represented is a Brighton Dome and Brighton Festival Creative Learning Project working with young women who face challenging life situations, using the arts to explore life experiences and to gain a deeper understanding of themselves and the world around us.  
**Price: Pay what you can**

### 29 November to 30 December

#### Snow White & Rose Red

RashDash  
This festive season Battersea Arts Centre has teamed up with acclaimed theatre company RashDash for the perfect Christmas treat for the whole family. Snow White likes to tell stories and paint. Rose Red likes to race with the deer and the wolves. When a friendly bear knocks on their door, the mischievous sisters have no idea it's the beginning of a brave and magical adventure. Commissioned and co-produced by Cambridge Junction.  
Age recommendation: 5+  
Running Time: Approx 1 hr 45 mins  
**\*\*ACCESS PERFORMANCES**  
**Price: £12.50 - £22. All tickets £12.50 on 29 and 30 Nov. Family Tickets from £50\***  
**See Snow White & Rose Red as a group of 4 people from £50. Band B tickets only. Just add 4 tickets to your basket (minimum 2 child tickets) and the discount will be applied automatically. £50 from 1-15 Dec. £60 from 16-30 Dec.**  
BSL and Relaxed Performances available. For everyone ages 5 and over.

#### Relaxed

Fri 1 Dec, 10am  
Thu 7 Dec, 1.30pm  
Sun 17 Dec, 11am  
Thu 28 Dec, 6pm  
These performances are open to everyone but are particularly suited for those on the autistic spectrum or those who would benefit from a more relaxed environment with regards to making noise and moving about.  
BSL  
Fri 1 Dec, 1.30pm  
Sun 10 Dec, 2.30pm

### 11 to 16 December 8pm

#### A Very John Kearns Christmas

Two-time Edinburgh Comedy Award winner John Kearns pulls up in his sleigh once more to share recordings of Christmas dinners gone by. Listen as his family pick over the bones of Midnight Mass, dissect jokes with abandon and mourn the quality of fish and chips. A show about home, memory and ritual. Christmas may be the only time of year you set fire to your pudding but the people sat around you never change. Star of his own BBC Radio Four series, Channel Four's 8 Out of 10 Cats Does Countdown and BBC3's cult hit Top Coppers.  
Age Recommendation: 14+  
Running Time: 60 mins  
**Price: £12.50, £10 concs**

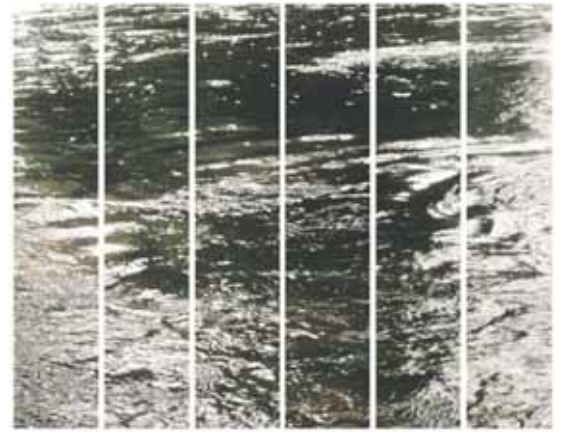


Image: Helen Frosi, 2017

### 1 September 2017 to 31 March 2018

#### Confluence: The River Speaks

With the support of the Wandsworth Council, Pump House Gallery presents the Outhouse commission 'Confluence: The River Speaks', taking place throughout September and October 2017, combining participation, sound and visuals in the design of a permanent installation at the Ram Quarter Heritage Centre, whose site sits on the estuary of the River Wandle and is set to open in early 2018. Led by multi-disciplinary artist, curator and producer, Helen Frosi, the project takes inspiration from myriad faceted aspects of the river Wandle; delving into its material, social and cultural history, as well as that which may be hidden. Activities are hands-on and include: drawing and sketching, collecting, field recording, lino printing, listening, local history, material studies, natural history appreciation, poetry, photography, presentations, rambling, soundscapes, vocalisation and aesthetic movement.

**All workshops should be suitable for all ages\* and are free to attend, booking is essential. \*except 'Open Ears!' and 'The River Speaks' which are suitable for persons age 16+.**

'Confluence: The River Speaks' has been commissioned on behalf of Greenland Group, developer of The Ram Quarter, as part of an exciting arts programme curated by culture agency Futurecity in partnership with the Pump House Gallery. The project engages with the local community to explore the fascinating history of the River Wandle and the surrounding area. The project is supported by Wandsworth Council and Enable Leisure & Culture and Living Wandle Landscape Partnership. LWLP is an ambitious £2.4m programme funded by the Heritage Lottery Fund celebrating and promoting access to the River Wandle's natural and built heritage.  
#confluencetheriverspeaks @SoundFjord @LivingWandle #Wandle



# Can you foster?

**Wandsworth Council is recruiting another 20 foster carers and is urging anyone interested in a career as a foster carer to get in touch.**

Children placed into foster care are of all ages and from all backgrounds, although most of them are teenagers. Foster carers willing to take siblings, older young people and children with special needs into their home are all needed urgently. You don't need to own your own home, but you do need a spare room.

There are generous weekly fees and allowances plus training and support.

For an immediate one-to-one meeting to fast-track the fostering process, visit [www.wandsworth.gov.uk/fostering](http://www.wandsworth.gov.uk/fostering), phone **020 8871 6666** or email [carerrecruitment@wandsworth.gov.uk](mailto:carerrecruitment@wandsworth.gov.uk).

## Suzie's fostering journey

**Suzie has been a Wandsworth foster carer for nearly 12 years. She is a single carer and has one daughter who is 16. She says:**

“Wandsworth training is fantastic. I also mentor and share my experience with other foster carers. It is a continual progress of learning. Fostering is about giving it your best shot and just making it work!

“We do so many activities together; we go to the farm, seaside - I find little adventures that work for each individual child.

I know I was born to do this job and I have no plans of stopping anytime soon. If you are considering fostering - go for it especially in Wandsworth where there is plenty of help and support.”



*Written by  
Lewis Carroll*

*Adapted & directed  
by Ciaran McConville*

*Music & lyrics  
by Eamonn O'Dwyer*

# Alice IN WINTERLAND

**ROSE  
THEATRE  
KINGSTON**

**Thu 7 Dec - Sun 7 Jan**  
Box Office **020 8174 0090**  
Visit **rosetheatrekingston.org**

**CNM  
ROSE  
PRODUCTIONS**



## Doing it online

Using our website helps keep your council tax bills low

### Report a waste problem

wandsworth.gov.uk/waste

### Request a housing repair

wandsworth.gov.uk/housingonline

### Search planning applications

wandsworth.gov.uk/planningregister

### Report a street problem

wandsworth.gov.uk/streets

### Apply for a school place

eadmissions.org.uk

### Book an MOT

wandsworth.gov.uk/MOT

### Report noise and nuisances

wandsworth.gov.uk/noise

### Apply or renew a parking permit

wandsworth.gov.uk/parkingpermits

### Report graffiti for removal

wandsworth.gov.uk/graffiti

### Report an abandoned vehicle

wandsworth.gov.uk/abandonedvehicles

### Tell us if you are moving in or out of Wandsworth

wandsworth.gov.uk/MIMO

### Enquire about your housing options

wandsworth.gov.uk/housingoptions

## Pay it online

It's now easier to pay online at [wandsworth.gov.uk/payments](https://www.wandsworth.gov.uk/payments)

### Pay your council tax

wandsworth.gov.uk/paycounciltax

### Pay a parking fine

wandsworth.gov.uk/parking/payment

### Pay your rent

wandsworth.gov.uk/rents

### Pay for a marriage or civil partnership ceremony

wandsworth.gov.uk/ceremonypayment

### Pay your business rates

wandsworth.gov.uk/paybusinessrates

### Pay a waste or littering penalty

wandsworth.gov.uk/waste-enforcement

## Talk to us online

### weekly e-newsletter

[wandsworth.gov.uk/enews](https://www.wandsworth.gov.uk/enews)



[facebook.com/wandsworth.council](https://facebook.com/wandsworth.council)



[twitter.com/wandbc](https://twitter.com/wandbc)



[instagram.com/wandsworth\\_council](https://instagram.com/wandsworth_council)

## My Account

Create an account and you will only have to sign in once to access the main council services.

[wandsworth.gov.uk/myaccount](https://www.wandsworth.gov.uk/myaccount)

## Report It app



**Wandsworth Report It** makes it easier for anyone to report problems like flytipping, graffiti and other environmental issues. Search for the Wandsworth Report It app on the Apple, Android or Windows app store.

## Other contacts at the council

### Adult Social Services

(020) 8871 7707

### Births, Deaths, Marriages and Voting Hotline

(020) 8871 6120

### Early Years and Childcare Hotline including Family Information Service and After School and Holiday Play Centre bookings

(020) 8871 7899

### Environmental Services including noise, pest control, private housing and licensing

(020) 8871 6127

### Finance Hotline including benefits, council tax, rents and business rates

(020) 8871 8081

### Housing Hotline including housing management and repairs, service charges, home

### ownership, homelessness and housing advice

(020) 8871 6161

### Parking and Streets Hotline including concessionary travel, blue badges, MOTs, highways and skip licensing and bay suspensions

(020) 8871 8871

### Planning and Building Control hotline including Community Infrastructure Levy (CIL), land searches and street naming and numbering

(020) 8871 7620

### Schools and Admissions

(020) 8871 7316

### Waste Hotline including rubbish, recycling and litter

(020) 8871 8558

# You can now **RECYCLE** all of these items from your **KITCHEN**

