

Brightside



No dentists in Wandsworth?

NHS

South West London



Think again...

Friendly NHS dentists are accepting new patients now!

Call the find-a-dentist helpline on **0300 1000 897** or visit **www.southwestlondon.nhs.uk** and search 'dentists' or text 'dentist' to **NHSGO** or **64746**

Thank you!

**For helping us
freeze council tax...**

*by recycling, keeping our streets clean, using our
website or by getting involved in your community.*

Wandsworth freezes council tax for fifth year

www.wandsworth.gov.uk

Inside

April 2012

news

| | |
|---------------------------|-------|
| Nine Elms tube boost | 7 |
| Open council | 8-9 |
| Refuse collection changes | 16-17 |
| Volunteering | 18-19 |

| | |
|------------------------------|----|
| Adult Learners Week | 20 |
| Diamond Jubilee and Olympics | 21 |
| Wandsworth Arts Festival | 26 |

features and regulars

| | |
|----------------|----|
| What's On | 27 |
| Useful numbers | 30 |

Wandsworth has frozen its element of the council tax at £377 for the fifth successive year

Combined with the GLA levy, it means the cost for the average Band D property will again be £684, set to be the UK's lowest and around half the London average.

The council has thanked residents for their part in driving down costs - for example recycling rates are up which has helped save £700,000 a year.

More people are also using online services, saving £500,000 a year.

Last year Wandsworth saved taxpayers £30 million in total. It is doing its bit by cutting

management and office costs, making it easier for people to access services online and is getting better prices on contracts.

One example is the borough's new refuse and recycling contract which will deliver savings worth just under £8m over the course of the eight year deal, while also guaranteeing weekly bin collections.

The authority is also thinking innovatively to protect services - for example by looking to see whether outside providers could run our libraries more effectively and at lower cost.



New look for Tooting Triangle playground

Young children living near Tooting Common now have a great new playground to explore and enjoy.

The new-look Tooting Triangle playground has reopened following a £215,000 revamp and now boasts the latest outdoor play equipment including large timber climbing pieces, a

play areas in parks, commons and housing estates.

Over the past four years £2.5 million has been spent on maintaining and improving these facilities for young people.

The town hall also provides a grant worth £125,000 a year to a local charity which provides an adventure playground on Wandsworth Common specifically aimed at children with disabilities.

hammock, swings and a giant sandpit.

Cabinet member for children's services Kathy Tracey said: "This is a tremendous natural look playground for children in the area. It has a great range of new equipment and is sure to be a popular leisure spot for local families."

The council also recently unveiled proposals for a £200,000 investment in the Battersea Park adventure playground and a further £300,000 for the borough's two other adventure playgrounds.

Wandsworth manages more than 200 playgrounds and

Two new primary schools planned

Two new primary schools are planned for Tooting and Putney.

Graveney School has put in a bid to the government to open a new primary free school in Franciscan Road, Tooting in September 2013. It would be located in the Professional Centre - a former school building that has been used for many years as a training centre for teachers.

The new school would admit 60 pupils into two reception classes each year, eventually creating places for 420 children in total, covering an age range from four to 11.

It would be overseen by Graveney but would have its own headteacher and primary teachers.

It would have standard admissions arrangements and would not be a feeder school for Graveney when its pupils transfer to secondary school.

The council can also push ahead with proposals to build a new primary school in Putney following its purchase of the former Putney Hospital. The school will be an academy, which means that it will be independent of local authority control. It will provide 420 primary places from 2015 for children living in the west of the borough.

The scheme also includes 24 flats at the northern end of the site for which planning permission was obtained in July 2010. Proceeds from the sale of the flats will help pay for the school.

Tackling street drinking

New powers could be used to tackle problems caused by the borough's street drinkers.

The council and Wandsworth Police have agreed to introduce new Designated Public Place Orders (DPPOs) to deal with specific problems.

Within a clearly defined zone where a DPPO is in force officers have the authority to stop people drinking in a public place and if necessary confiscate any alcohol in their possession. Anyone who fails to comply would be guilty of an offence and could face an on-the spot fine or prosecution in the magistrates court.

The first DPPO is being considered on the Ashburton Estate in Putney following complaints from local residents about the anti-social activities of a hardcore group of drinkers.

Before an order can be set up, there must be widespread consultation with the local community, and all other courses of action, such as more police patrols and efforts to enrol people in alcohol treatment programmes, must have been tried.

The council's community safety spokesman Cllr Jonathan Cook said: "If a DPPO is introduced following public consultation, it should be stressed that this would not mean a drinking ban on other members of the public. Law abiding residents who may choose to sit on the grass outside their flat and not cause any bother to other people would not be affected by this."



Elliott School consultation

People living near Putney's Elliott School will be invited to comment on plans to upgrade the building and secure its long term future.

Proposals are being jointly worked up by the school governors, Wandsworth Council and education charity ARK Schools to remodel Elliott and convert it into an academy from September.

The multi-million pound building project for the grade II listed building will also include new sports facilities. It is proposed that funding comes from disposing of part of the school grounds.

Previous remodelling plans had to be abandoned following the end of the last government's Building Schools for the Future project. Governors, the council and ARK believe that disposing of part of the site is the only way to fund this vital work to the standard required by English Heritage.

The consultation will run until 24 May. The final decision will be made by the Department for Education.

There will be a further chance to comment later this year on subsequent planning applications for the school, including the provision of temporary accommodation for the school to move into this December.

Cabinet member for education and children's services, Cllr Kathy Tracey, said: "We are delighted to be working with ARK Schools and the school governors. This is a terrific opportunity to carry out much needed improvements and provide Putney parents with the secondary school they deserve."

►► For more information visit www.wandsworth.gov.uk/putneyarkacademy.

MY WANDSWORTH

Samuel Owhoka

I've been in Wandsworth for 15 years now and I really like it here. I've got a barber shop in Garratt Lane - Clean Cuts - and I have clients from different races and backgrounds. They keep coming because of the service we offer and the fact that we are in an accessible and friendly area.



Design Awards

Tooting Library, two schools, a Putney church and a range of other borough buildings were the winners of the 2011 Wandsworth Design Awards.

Nominations came from businesses, architects, residents and people working in the borough. See a full list of winners at www.wandsworth.gov.uk/designawards.

Get fit

Some of the borough's leisure centres are currently offering deals on membership prices. See www.dcleisure.co.uk for more details.

IMPORTANT read this!

Wandsworth Council is changing bank accounts.

If you pay by standing order, internet banking or BACS, please ensure that you use the council's new bank details when making any payment after 1st April 2012.

Account name: Wandsworth Council General Fund

New sort code: 60-22-28

New account number: 69612544

Please note:

This change affects payments made to the council, using the methods listed above **ONLY** and regardless of type of account or service received.

Remember to quote the relevant council reference number whenever you make a payment.

Thank you

For more details please visit
www.wandsworth.gov.uk/bankchange

Designed and produced by the Corporate Communications Unit, Wandsworth Council AD 1020 (2.12)



GET ACTIVE WANDSWORTH FESTIVAL

18 APRIL - 30 SEPT 2012

Get involved in something truly inspirational

www.wandsworth.gov.uk/active



AD 966 (2.12)

SMARTER HOME OWNERSHIP SHOULDN'T BE A HALFWAY HOUSE

KINGSWAY SQUARE, BATTERSEA



Shared ownership means you can get on the property ladder in manageable, affordable stages – you choose a property you like, buy a share you can afford and pay a subsidised rent on the rest. You can save substantially on renting a similar property privately and you can increase your share at any time all the way to 100%.

And shared ownership doesn't mean compromise, take Kingsway Square, Battersea. Located on Lurline Gardens, close to Battersea Park and Queenstown Road station, Kingsway Square seamlessly combines a spectacular, Edwardian former college with sympathetically designed new

buildings, set around a private, landscaped square. Inside, every apartment has been designed and fitted to a high-end, contemporary style specification, whilst the entrance hall and communal areas are resolutely grand, featuring high ceilinged, arched spaces with large, stained glass windows and polished marble floors.

Prices for a studio apartment start from just £245,000, so you can purchase a 25% share for £61,250*. Call us today to discuss your eligibility and book an appointment to view.

* Eligibility requirements apply

 **Genesis**

0808 118 1892
www.geneshomes.org.uk

Tube link would boost economy



Extending the Northern Line to Nine Elms could boost the UK economy by up to £7.9bn by increasing foreign investment according to a leading economic consultancy.

The independent report by Volterra Partners says the economic benefits of building two new Tube stations at Battersea Power Station and Wandsworth Road would

pay for the scheme between three and nine times over. According to the report, commissioned by Wandsworth and Lambeth Councils and Transport for London, the Northern Line Extension would enable the underdeveloped Nine Elms district to support the same high levels of commercial activity as the rest of central London.

A fully developed Nine Elms could provide up to 25,000 new jobs, 16,000 new homes and will include the new home of the US Embassy and a redeveloped New Covent Garden Market. Property values are expected to rise faster in Nine Elms than in any other part of London according to property agency Knight Frank.

A multi-billion development programme has now begun transforming Nine Elms into a high density residential and business quarter. More than 20 sites are now gearing up for redevelopment and work has begun on some.

In February planning permission was given for the 15 acre Embassy Gardens scheme (pictured). This will provide 1,982 new homes alongside shops, cafes, bars, restaurants, business space, a 100 bed hotel, a health centre, children's playgrounds and sports pitches.

Developers Ballymore will pay between £52.5m and £55.7m towards improving the local transport and social infrastructure, including the Northern Line Extension.

► Find out more at www.wandsworth.gov.uk/nineelms.

Balham cash boost

The council has secured £1.4million from the Outer London Fund to improve Balham. Projects will include improvements to the railway bridge over Balham High Road, pedestrian improvements to Hildreth Street, upgrades to the Balham community space and the Post Office forecourt on Balham High Road and a programme of cultural and business events.

Visit www.balham.com.

Business Partnership

The Wandsworth Business Partnership has been set up to promote inward investment and support local businesses, as well as providing a voice on key concerns such as parking and business rates.

Follow on LinkedIn at Wandsworth Business Partnership or on Twitter at @BusinessWandBC.

Earlsfield praised

Earlsfield has been judged to be one of the capital's best kept secrets for people looking for somewhere to live. The Metro newspaper highlighted a vibrant high street, excellent schools, good transport links and easy access to green spaces.

The council is currently helping fund a major revamp of Earlsfield station, including two lifts, new walkways and ticket offices housed in a new, modern building. All work is due for completion this summer.

Job help

A new programme is helping Wandsworth families get back into work.

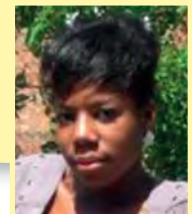
The Families Programme is delivered by Twin Training in partnership with the council and includes advice, employability skills, job planning and access to training. It's eligible to people claiming a work-related benefit.

Call Nicole Vines on 07957 058600 or email nvines@twinuk.com.

MY WANDSWORTH

Vanessa Eastman

I've been a Wandsworth resident for twelve years. The borough is significantly multi-cultural and community orientated. From an economical perspective, living in the borough has been beneficial for me due to the council tax being so reasonable.



An Open Council

It's become easier than ever for Wandsworth residents to see how the council is performing compared with others.

Wandsworth has become the first UK council to be completely open about how it's doing. Information about how well we are providing services, including schools, libraries, care services and roads, has been set out in an easy-to-read format on our website.

Each graph shows our performance compared with other London boroughs, together with an explanation of the results from the relevant cabinet member.

This data has been available publicly for a while, but this new format makes it easier to find. The public can have their say by posting comments on the site, which are then fed through to the relevant department.

Council leader, Ravi Govindia said: "This gives members of the public easy access to information they have every right to see - and in turn an opportunity to hold their council to account if they feel we should be doing better. I have no doubt that transparency and openness on this level will drive us to become an even better council."

Visit www.wandsworth.gov.uk/opencouncil.



Household recycling rate

Wandsworth's rank in London: 26

Councillor Jonathan Cook, cabinet member for environment, culture and community Safety says...

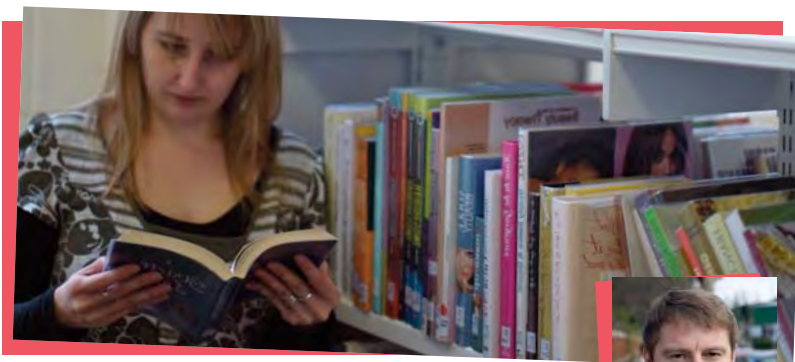
"A high proportion of the materials we collect are recycled. Our overall recycling figure climbs to a very healthy 40 per cent when including our innovative Energy from Waste facility, where metals are recovered from household waste and recycled. We are also piloting a bulky item reuse service and waste chute re-designation to further improve recycling rates."

Council homes which do not meet government standards

Wandsworth's rank in London: 1

Councillor Paul Ellis, cabinet member for housing says...

"This authority was one of the first in the country to achieve the Government's decent homes standard, achieving full compliance with that standard in 2007 some three years ahead of the Government target. The council was able to do this without recourse to Government borrowing and continues to maintain a viable 30 year business plan that will mean that funding is available to keep stock decent. Effective programme delivery, active asset management and our prudent approach means that we are able to undertake and programme improvements beyond the Decent Homes Standard."

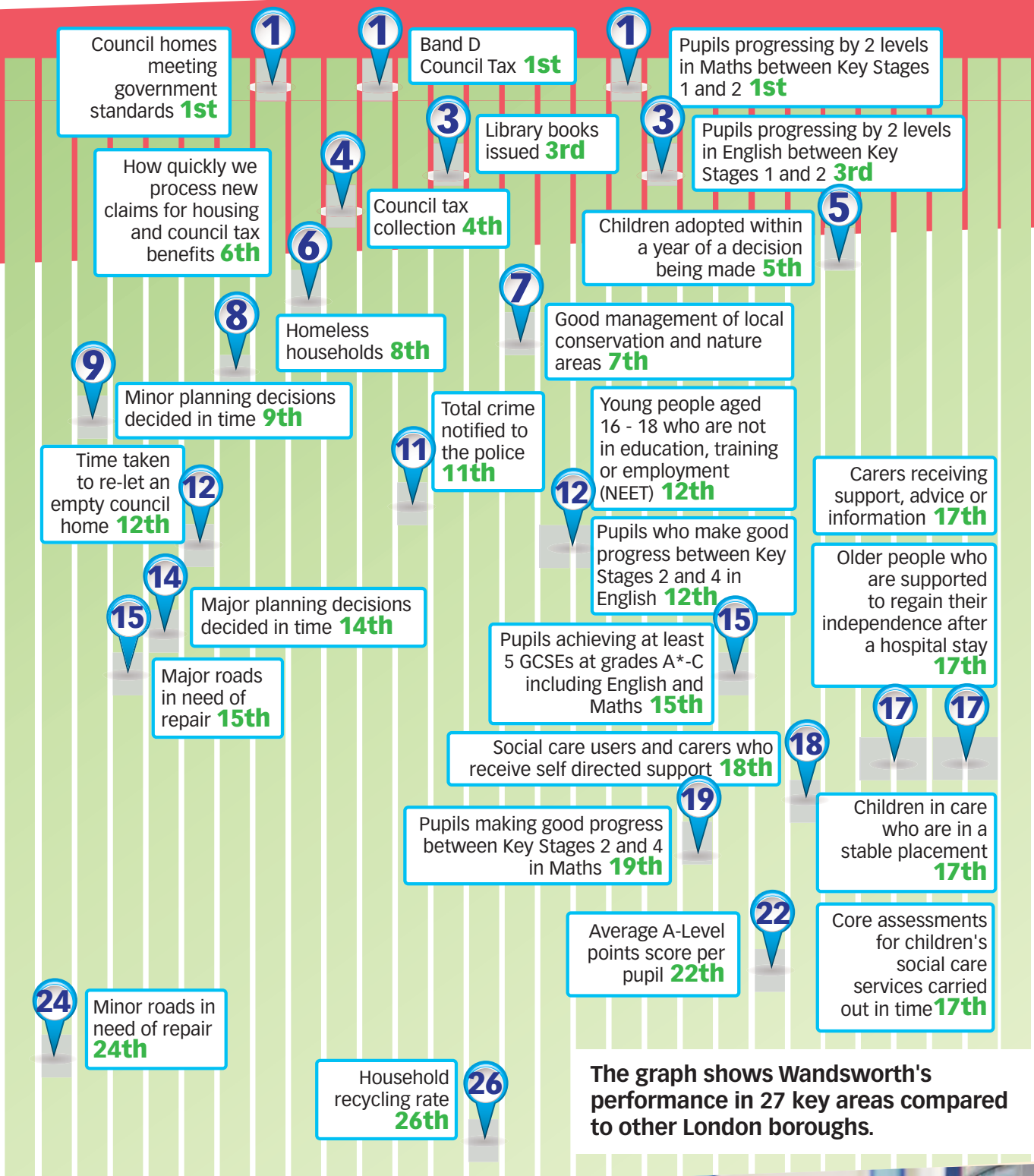


Library books issued

Wandsworth's rank in London: 3

Councillor Jonathan Cook, cabinet member for environment, culture and community Safety says...

"This consistently high result is achieved by offering customers book stock with range, depth and quality achieved by financial investment and professional librarians."



The graph shows Wandsworth's performance in 27 key areas compared to other London boroughs.

Pupils achieving at least five GCSEs at grades A*-C including English and Maths

Wandsworth's rank in London: 15

Councillor Kathy Tracey, cabinet member for education and children's services says...

"This was the best performance ever for Wandsworth, well above the national average. Wandsworth has also improved faster than the national average, with an increase of 18.7 percentage points since 2006.

Full details on the work done to support schools to achieve this can be found in the Annual Quality and Standards Report (2011) available on the council's website."



Identity Fraud

don't be
a victim



Treat your identity as cash

Take care on social networks

Keep your PIN numbers secure

Use secure & trusted websites

Use strong passwords

Shred all personal documents

Check your credit history

Find out more at

www.met.police.uk/fraudalert



METROPOLITAN
POLICE

TOTAL POLICING





Training community champions

A charity is tapping into the strong community spirit which emerged after Clapham Junction was targeted by looters and vandals – by training residents to become volunteer community mediators

Battersea-based charity the Wandsworth Mediation Service has been awarded a £4,500 council grant to train 15 volunteers.

Community mediators promote peace by listening to people involved in conflicts before bringing them together to search for a solution. Problems could include a dispute between neighbours who have hurled abuse at each other for so long they have forgotten how it all started, or couples in the midst of an acrimonious break up.

Manager Joanna Price said: "Wandsworth Council has

obviously realised how important a mediation service is to community cohesion and has therefore agreed to help fund the training for new volunteers – we are delighted to have the town hall's support.

"While many of us in our local communities spend time complaining about the problems that led to the summer riots, these 15 people have decided to do something positive to benefit their neighbourhoods.

"The money will enable them all to go through an intensive 35 hour mediation course and other related training, before giving up their evenings and weekends to promote peace within the community."

►► [Find out more about the service at www.wandsworthmediation.co.uk](http://www.wandsworthmediation.co.uk)

You don't have to do anything extraordinary to do something Special

Foster Carers

Are you someone special, with room in your life, and your home? Whether you're married or single, gay or straight, a homeowner or renting, and whatever your cultural background, we'd like to hear from you if you're interested in fostering.

As well as a spare bedroom, you'll need to adapt and be flexible. Fostering is challenging and rewarding, but we offer lots of support, and competitive fees and allowances to enable you to make a lasting difference to a child's life.

To find out more call (020) 8871 6666 or visit www.wandsworth.gov.uk/fostering

[wandsworthfostering](https://www.facebook.com/wandsworthfostering)

Discover the rewards of fostering

AD.1015 (3.12)



New riverboat pier

A new passenger landing pier is planned on the Thames between Wandsworth and Battersea railway bridges.

Hundreds of residents rely on the Putney to Blackfriars riverbus service and the pier at Plantation Wharf in Battersea will create an extra stopping point in the borough for those looking to travel into and across the capital along the River Thames.

The public passenger landing pier will be provided in conjunction with pontoons housing nine private residential moorings and two leisure craft moorings.

Riverboat operator Thames Clippers recently expanded its operation to St George Wharf in Vauxhall and it intends to further extend the commuter service as far as Putney.

More and better river transport is one of the aims of the council's Travel Choices campaign. Other recent successes include Government backing for a Northern Line extension to Nine Elms and Battersea, and the expansion of car club schemes in the borough.

The Plantation Wharf pier development, submitted by Cube Real Estate, was granted planning permission on February 16.

►► For more information about the Wandsworth Travel Choices Campaign visit www.wandsworth.gov.uk/travelchoices.



Top donor

Local businessman Kalpesh Patel has donated £10,000 to the Tooting Ronald McDonald House. The house is in the grounds of St George's Hospital and provides accommodation for families with sick children.

Mr Patel raised the money by selling key rings in the nine local McDonalds restaurants he owns. The picture shows him with the Mayor of Wandsworth Cllr Jane Cooper and the manager of the Tooting Ronald McDonald House, Jeanette Hill.

Pop up food

Balham has its first pop-up restaurant.

The Southwest Supper Club pops up in a variety of locations, including cafes, art galleries and the owner Jimmy Garcia's home. The next event is in Bolingbroke Grove on April 27.

Email southwestsupperclub@gmail.com.

Putney app

Putney doctor Simon Edwards has launched a free app to enable the town's smartphone users to instantly communicate with each other.

TiCL means people can message about events and offers and warn people nearby about problems such as roadworks or water leaks.

More at www.ticl.com.

200th home

The council has unveiled its 200th Hidden Home. These affordable homes are created in disused areas such as old storage areas or laundry rooms.

The latest wave of nine new homes has been created at the Doddington Estate in Battersea.

Find out more at www.wandsworth.gov.uk/hiddenhomes.



GREEN WHEELS

The car you only pay for when you use it

Try our car club
Special offer:

For £10 you get a one
year membership and
£20 driving credit!



Check www.greenwheels.co.uk/offer

Check our website for the terms and conditions.

Your offer code:

grnwh1s5

sign up now for part-time courses

You'll be spoiled for choice with our wide range of leisure courses offered at centres around the borough, including Wandsworth, Tooting and Roehampton.



Over 500 courses in subjects which include:

Art and Design,
Business and Accounts
Complementary Therapies
and Massage, **Computing**
and IT, Counselling and
Wellbeing, **Crafts**, English
(Writing and Literature),
Fashion, Textiles and
Interiors, First Aid,
Floristry, Food and Drink,
Hair and Beauty, History,
Humanities, Languages
and Communication,
Nutrition, Managing Your
Money, **Massage**, Music,
Performing Arts, Music
and **Media, Photography,**
Plumbing, **Professional and**
Personal Skills, Sport



Enrol now by phone or in person.
Or sign up for one of our Taster Courses.

Drop in to one of our centres, call us to request a course guide, or visit our website for further details.

020 8918 7777
www.south-thames.ac.uk/leisure

WANDSWORTH • TOOTING • ROEHAMPTON • MERTON



Adult
Learners'
Week
learn for life
12-18
May
2012



[YouTube](#) [twitter](#) [facebook](#)



Volunteering to join the service

The Metropolitan Police welcomes help from volunteers. There's two main ways to get involved.

Become a Special

Metropolitan Special Constabulary (MSC) officers - called special constables - provide vital support.

As well as learning new skills and enjoying varied, and sometimes exciting work, you'll have the satisfaction of knowing that you are helping to reduce crime, disorder and fear.

MSC officers are given much the same roles as regular, full-time police officers. They are issued with the same uniform and equipment and also have the same powers of arrest. In many cases Specials will patrol as part of a Safer Neighbourhoods Team, working together with local people on tackling local issues.

To find out more contact Kevin Underwood: Kevin.Underwood@met.police.uk, (020) 8247 8004, or Steve Grant: Steve.Grant2@met.police.uk, (020) 8247 8004.

Become a Met Volunteer

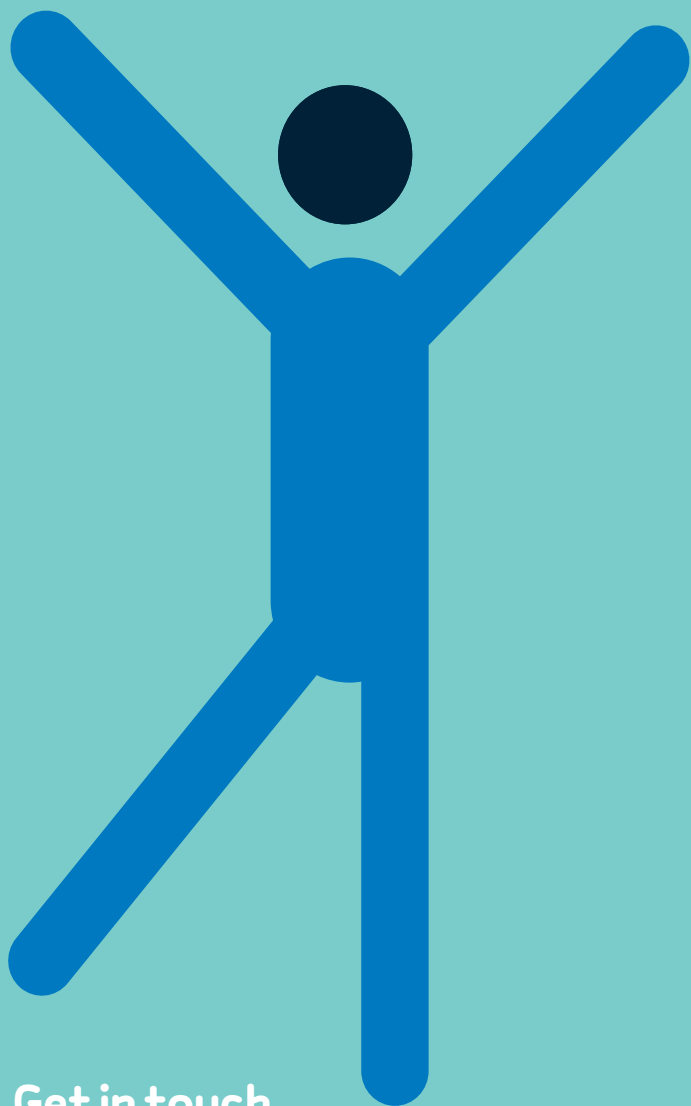
The Met Volunteer Programme (MVP) was established in 2001 to get local communities more closely involved with their policing, free up officer time and bring valuable skills into the force to improve the service it delivers to the public.

Work could include:

- Helping at front counters
- General administration
- Press Office support
- Role-plays for police training
- Neighbourhood Watch support
- Working with Volunteer Police Cadets (VPCs).

Contact Carol Beckford, Wandsworth's MVP Manager Wandsworth, on (020) 8247 8022.

Time to quit?



Wandsworth Stop Smoking Service

With our professional help
you are **4 times** more likely
to quit smoking for good

You can get stop smoking
support without needing
an appointment:

- Pop into any pharmacy
in your area
- Get in touch for up to date
times and locations of our
drop-in clinics

Get in touch...

Freephone: **0800 389 7921**

Email: **stopsmoking.team@wpct.nhs.uk**

All change for refuse collection

You'll see changes to your refuse and recycling collection from April.

The main changes are

- Collection days will change. Find your new collection day at www.wandsworth.gov.uk/refusecollection.
- Rubbish and recycling will be collected at the same time using vehicles with separate compartments.
- Saturday morning collections will cease. Residents frequently complained about early morning noise.
- Nightly collections from flats above shops will stop.
- Garden waste can now be put in with general household rubbish, to be sent to the Belvedere energy-from-waste incinerator. You will no longer have to pay for separate garden waste collections. Put garden waste in black bags, not orange ones – it cannot be recycled.
- Residents will get three rolls of 30 green sacks delivered once a year.

These are the latest in a series of changes to refuse and recycling collection, designed to improve the service for residents, make savings and reduce the amount of waste being produced.

The borough's overall recycling rate – combining household recycling and the recycling of incinerator ash and metals – has passed the 40 per cent mark for the first time.

In 2012/2013, the council expects to collect around 26,000 tonnes of recycling from homes across the borough, saving around £58.50 per tonne compared to residual waste disposal costs. In total this will save around £1.5m.

The amount of general rubbish has also fallen by around 29,000 tonnes since 2003/04. With waste disposal costs continuing to rise, this decline is expected to save around £4m next year.

The opening of the new recycling plant at Smugglers Way last year means a much wider range of plastics can be recycled, while the new energy-from-waste plant means rubbish is no longer sent to landfill. The plant at Belvedere incinerates the rubbish and generates electricity from it.

Ash produced by incinerating waste contains pieces of glass, rubble, sand, grit and stone, which are sorted into different size grains for use in construction projects such as road building.

The **26,000 tonnes** of recycling the council expects to collect over the coming year is equivalent to the weight of about **145 blue whales**, or **6,500 elephants**.





What can be recycled in orange bags/bins?

Mixed glass, bottles and jars.

Please remove lids, tops or corks. Mirrors, pyrex, window glass and broken glass cannot be recycled.

Milk, juice and soup cartons and Tetra Pak cartons.

Please remove plastic tops.

Newspapers, magazines and other paper and card products.

No wet or shredded paper please.

Plastic bottles, yoghurt pots and food tubs and trays.

Please rinse of excess food and remove lids or tops and plastic film wrapping. Foil containers cannot be recycled.

Cans, tins and empty aerosols.



I booked a collection by the Re-use Service for bulky items and the items were collected three days later by the William Wilberforce Trust. The service was quick and efficient, the collectors turned up on time and were very helpful and friendly. This is an excellent service and not expensive and it's good to know that items will be re-used and/or used for training purposes. I'll certainly use the service again and recommend it to others. I'm glad that Wandsworth is supporting and publicising it.

Deirdre Feehan,
Wandsworth



Not sending waste to landfill means the global warming effects of methane emissions from rubbish dumps are avoided.

What about clothing and furniture?



Please do not put clothing in orange bags or bins. Take items in good condition to a charity shop or go to www.recyclenow.com to find the location of your nearest clothes recycling bank.

Electrical items or furniture can be taken to the Smugglers Way recycling centre. Alternatively, you can book a chargeable bulky waste collection on (020) 8871 8558.

The council has also launched the new Reuse scheme in partnership with the William Wilberforce Trust. You can request a collection for bulky items, or take them to Smugglers Way. Items are repaired and sold on at affordable prices. The collection charges are the same as the council's bulky waste charges. Call (020) 3142 8506.

Find out more at www.wandsworth.gov.uk/recycling.

**Recycle more
Throw away less**

Fund helps communities help themselves

Thousands of local people give up their time each week to help out in their local community. The council works with the voluntary sector through its contractor Volunteering Wandsworth, and by offering grants and other support.

Here are just some of the ways volunteering is thriving in the borough.

Volunteering for business

Volunteers have been working at Sheringdale School as part of a drive to get companies more involved in volunteering.

Twenty staff from Contact Law went along to the Southfields primary school to carry out improvements to the playground. The day was a pilot project for Volunteering Wandsworth's Employer Supported Volunteering Scheme.

The scheme will match up companies who are happy for their staff to carry out work in the community. Volunteering Wandsworth works on

behalf of the council to increase volunteer opportunities in the borough.

Sheringdale headteacher Kevin Hogston said: "There was a great buzz about the day with a great sense of community spirit in helping the school which was excellent."

Dan Watkins from Contact Law said: "As a London-based business we were impacted by the riots last summer and we felt compelled to take action. We have arranged a regular programme of volunteering activities, from environmental-focused ones like this, through to support of the elderly and mentoring of the unemployed."

To find out how to take part in the scheme, contact Volunteering Wandsworth on 0300 365 9950.



Helping fire victims

Volunteers are working with the London Fire Brigade to help people who have been the victim of a fire in their home.

They give support and advice on who to contact for help such as replacing lost documents and carrying out cleaning and repair work.

The ten volunteers were chosen and trained following an open evening at the Town Hall. Volunteer Marie Burmiston said: "Not everybody has an extended family to turn to, and people can be apprehensive about a visit from an authority figure. Knowing that it's another resident from the borough coming to visit can breakdown the barriers and make all the difference."

Tooting resident Alverna Chudasama was visited by two of the volunteer team after a fire in her living room. She said: "A few days after the fire somebody from the fire brigade called and asked me if I needed any help getting things done. Then two lovely volunteers came and talked to me for nearly an hour before giving me some information with the contact details on."

If you have had a fire and would like a visit, call or text your name and contact details to 07585 306688.

The picture shows Alverna Chudasama (centre) thanking red watch firefighters, volunteer project coordinator Paul Rajkumar and volunteers Ted Lawson and Marie Burmiston.



Turning scrap into art

As part of our new regular focus on volunteering groups, this month we look at the work of the Wandsworth Work and Play Scrapstore.

The Scrapstore, in Tooting, takes unwanted items from local companies and gives them to people who can make good use of them.

Frequent users are school and playgroups, whose teachers turn up to the Scrapstore to find items that can be used for crafts or in a school play.

The National Portrait Gallery sends auction catalogues which are glossy and heavily inked, so not ideal for recycling - but perfect for collages. Foam sheets used by NASA for sound proofing quickly get snapped up, Ted Baker send unwanted mannequins and 'glitter waste' is especially popular. The last couple of metres on the end of a roll of silver card used in cigarette packaging are of little use to the manufacturers, but great for art projects.

The Scrapstore, a voluntary organisation and registered charity, is always keen to attract new users and donors. Visit www.workandplayscrapstore.org.uk.

Cash for youth groups

A grant scheme for young people, awarded by young people, has celebrated a successful first year.

The Wandsworth Youth Opportunity Fund (YOF) is a £100,000 pot given to young people to fund community projects, or to spruce up premises used by youth groups.

A panel of trained young people shortlist applications then invite bidders to present to them Dragons' Den style. After grants have been awarded they go and inspect projects to monitor how the money has been spent.

Successful applications in 2011 included a dance workshop, a filmmaking workshop a new music studio, a sensory room for young people with disabilities and comedy workshops.

The next deadline for applications is May 7.

►► **Email yof@wandsworth.gov.uk or call Antonia on (020) 8871 8530.**

Apply now for the next round of Wandsworth Big Society FUNDING

The Wandsworth Big Society Fund, launched last year, helps grassroots community projects get off the ground. It is now accepting applications for the third round of grants.

Its first two rounds of funding have helped dozens of community and voluntary groups and non-profit organisations – with almost £117,000 awarded to projects that help older and vulnerable people and improve local communities.

Grants of up to £5,000 are available, but any over £1,000 will require evidence of match funding. Applicants also need to get endorsement from their ward councillor.

The deadline for applications is April 16.

►► **Find out more at www.wandsworth.gov.uk/wbsf, or contact Nigel Chandler on (020) 8871 6206.**

Round two WBSF recipients include:

- The Doddington Community Roof Garden will set up family-friendly workshops that focus on gardening, art and healthy eating.
- Tooting Graveney Daycare will provide exercise and computer classes for older people and provide transport to users with mobility problems.
- The Wandsworth Sickle Cell and Thalassaemia Support Group will use their grant of to run workshops and raise awareness.
- The Roehampton Football Community Academy will provide football coaching for 16 to 25-year-olds to teach discipline, teamwork, social skills and timekeeping.



One scheme part-funded by the YOF saw a team of young people from the Prince's Trust transform the garden at the Training Resource Centre in Alma Road, Wandsworth.

WHAT? WHERE? WHEN? HOW?

Adult Learners' Week

12-18 May 2012

TRY SOMETHING NEW!



Using the Internet to find a job

The most successful jobseekers are people who are persistent in their search and know all the places to look for work. There are a number of ways you can search for jobs, including online. Attend this workshop and get instruction on using one of Britain's largest databases of vacancies.

Sessions to take place on Monday 14 May, Wednesday 16 May and Friday 18 May 10-11am.

Call: 020 8871 8626

www.wandsworthlifelonglearning.org.uk

ASPIRE @ Southfields Community College/ Wandsworth CLC

Come to the Aspire Centre and learn a new skill or hobby at one of our FREE taster sessions including: Sport & Fitness, Creative Media & IT, Practical Skills and Health

Call: 020 8675 2603

Email: info@aspirecentre.com

www.aspirecentre.com

Saint Francis Xavier College

Sample a wide range of evening classes free of charge to learn about the world; for work; for pleasure; for fitness and wellbeing or for art & culture. Subjects include languages, dance, arts, crafts, sports, floristry, wine appreciation, song writing etc. Come and see for yourself what's on offer!

Mon 14 May 7pm – 9pm;

Tues 15 May, 7pm – 9pm;

Thurs 17 May 7pm – 9pm

Call: 020 8772 6060

<http://broadoak.sfx.ac.uk>

South Thames College

Have fun, make friends and learn new skills.

Try one of our FREE "taster" sessions during Adult Learners' Week in Computing, Craft, Health and Fitness, Languages and much, much more or register for one of our great value daytime or evening courses at state-of-the-art new facilities on Wandsworth High Street or at centres in Roehampton and Tooting.

Check out the College website www.south-thames.ac.uk for course details or call 020 8918 7777 for a free guide

Wandsworth Libraries and Heritage Service

Taster sessions at your local library to set you on a new path. The sessions include computer skills (including Facebook, Twitter and eBay), languages, art, music, and fitness, to help you improve your job skills, de-stress, save money or just to enjoy something new. Full programmes are available in all libraries.

Call: 020 8871 6369

www.wandsworth.gov.uk/libraries

Adult and Community Learning Team

Other ACL workshops during the week include:

- Return to Work – help with your CV
- Find Your Voice – singing workshop
- Minging to Blinging – Dress to Impress
- Box-fit for the un-fit
- Total Core Workout for Beginners
- Taster workout session for home use
- Help setting up your own business – release the entrepreneur in you!

Call: 020 8871 8626

www.wandsworthlifelonglearning.org.uk

Putney School of Art & Design

Open Day at Putney School of Art & Design

The open day provides an opportunity to sample some of the creative activities at Putney School of Art & Design both for adults and families. You will be able to dip into various activities or concentrate on a particular area of interest. It will be informal, enjoyable and stimulating.

No previous experience is required but do be prepared to get a bit messy!

Activities will include: painting, drawing, pottery, printmaking and photography.

Day: Sunday 13 May

Times: 10.30am – 2pm

Taster drawing classes at Putney Library

An opportunity to try out a free drawing class in an informal setting in Putney Library. All materials will be supplied.

Day: Thursday 17 May

Times: Drawing Class 3pm – 5pm;

Portrait Drawing 5.30pm – 7.30pm

Please contact the school for further details

Tel: 020 8788 9145

Email: putneyschoolartanddesign@wandsworth.gov.uk

www.wandsworth.gov.uk/psad

Adult and Community Learning Team

English not your first language?

Attend this session and get practical help:

- Free assessment of your needs
- Chance to try out practical exercises
- Guidance on the courses that would be suitable for you

Call: 020 8871 8626

www.wandsworthlifelonglearning.org.uk



Federico is garden hero

Volunteer Federico Filippi has been named a Garden Hero by the Capital Growth campaign for his work at Mount Court, a sheltered housing scheme in Putney.

Federico, a volunteer with the Garden Partners scheme, has worked tirelessly over the past year to bring new life to the gardens at Mount Court, growing organic vegetables, fruit and herbs. He has rekindled interest among residents who thought their gardening days were over, but who are now joining in with growing and watering. A new greenhouse, donated by the Prince's Trust, will allow Federico and his 'team' to grow a wide range of seeds next year.

And this year they plan to introduce bee-keeping at the scheme, thanks to Federico's £250 prize from Capital Growth.

Garden Partners is run by Age UK Wandsworth and supported by the council and NHS Wandsworth. Call Sarah Jackson on (020) 8877 8946 or visit www.ageuk.org.uk/wandsworth.

Federico is pictured with Mount Court resident Betty.

Share a garden for a growing friendship



Are you over 60 and struggling to look after your garden?

Or perhaps you dream of more garden space where you can grow flowers, fruit and vegetables?

Garden Partners matches older garden owners living in the London Borough of Wandsworth with fully vetted volunteers who would like to tend a garden regularly.

The 'garden partners' form a team to plan the garden together and share any fruit or vegetables grown.

Registered charity no. 1069406



Call **020 8877 8946** or visit our website

www.ageuk.org.uk/wandsworth



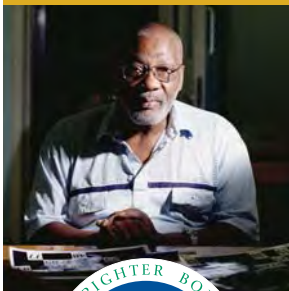
CARERS WEEK

18-24 June 2012



Carers provide unpaid support to a relative, partner, child or friend due to illness, disability, frailty, mental health condition or substance misuse.

Join us on Wednesday June 20 to celebrate at the Civic Suite, next to Wandsworth Town Hall



In Sickness and in Health is a free day of information stalls, workshops and entertainment with lunch available

- Does your health suffer because of your caring role?
- Do you get enough support?
- Are you worried about services?
- Does your employer understand your caring role?

If you would like to go, call **(020) 8877 1200** or email info@wandsworthcarers.org.uk.





Rowing for gold at Barn Elms

The Barn Elms Boathouse is run by the council to give everyone in Wandsworth the chance to take part in rowing, *writes Eugene Allen.*

Olympic Gold medalist Martin Cross grew up using the facilities, training on the river in the early stages of his rowing life. Cross went on to have a successful professional career, winning bronze in the 1980 Moscow games and then gold in the 1984 Los Angeles games.

He told BrightSide: "Growing up, it was a great place to learn. It's a fantastic centre and crucial for young rowers who don't go to independent schools."

Martin believes the image of rowing as the preserve of the middle classes is slowly changing: "The face of our sport is constantly evolving. It's no longer the preserve of private schools and the international team is testament to that, as around 40 percent of its members come from state schools.

"Facilities like Barn Elms have an important role in ensuring this local talent continue to come through."

Barn Elms Boathouse runs courses for adults and young people aged from 12.

►► **Find out more at www.wandsworth.gov.uk/barnelmsboathouse, call the boathouse on (020) 8788 9472 or email bebh@wandsworth.gov.uk.**

Take Heart

The Heart (Health, Access and Rehabilitation Team) service works with adults with disabilities to promote an interest in and raise awareness of health and fitness.

The service is based at the Wandle Recreation Centre in Wandsworth and is accessed by referral from GPs and health and social workers.

Call (020) 8871 9934.

Third Door

The UK's first business to make life easier for self-employed parents by offering office space with an integrated nursery has opened at Point Pleasant.

The 'integrated workhub' has offices and a meeting room available to members, who can drop their child off at the onsite nursery. Third Door is also open to non-parents and small businesses.

Find out more at www.third-door.com or call 0208 877 0098.

Jubilee street parties
Road closures are free
Sat 2 June to Tue 5 June.
Book now at
www.wandsworth.gov.uk/streetparties

Register to vote

The elections for the Mayor of London and the London Assembly are taking place on May 3.

If you are not yet registered you have until midnight on April 18 to complete and return a voter registration form, and until 5pm on the same day to complete and return a postal vote application form.

Poll cards will be delivered between Friday 23 and Sunday 25 March except in Southfields ward, where they will be delivered the following weekend. You will receive one if you are currently registered and are a British citizen or a citizen of a qualifying Commonwealth country, a British Overseas Territory or a European Union country.

Three ballot papers will be issued, one for the Mayor of London, one for the Merton and Wandsworth Constituency Assembly member and one for the London wide Assembly members. A booklet will be delivered to every elector in April by the London Elects team containing information about the Mayoral candidates and how to cast your votes.

Download a registration form at www.wandsworth.gov.uk/vote, email electoral@wandsworth.gov.uk Or call (020) 8871 6023.

Summer of sport and celebration



You'd have to be living under a rock not to know that the Olympics come to London and the Queen is celebrating her Diamond Jubilee this summer.

But you may not know how much is going on in Wandsworth. The following is a timeline of the main events.

June 3 Diamond Jubilee Flotilla and Pageant and Diamond Jubilee Festival

The seven mile-long, 1,000 vessel flotilla headed by the Queen will set off along the river from Battersea. It will take 90 minutes to pass any given point and around 20,000 people are expected to take part.

The festival in Battersea Park is expected to be one of the largest public events held in London. It will feature different zones dedicated to design, music, fashion, art, film and food from each of the six decades of the Queen's reign and will include a funfair, tea dance and live music.

►► For details visit www.thamesdiamondjubileepageant.org.

June 3 The Big Jubilee Lunch

Communities are being encouraged to share lunch with neighbours and friends as part of the Diamond Jubilee celebrations. Wandsworth Council has announced it will be free to organise jubilee street parties.

►► More at www.wandsworth.gov.uk/streetparties.

July 21 River of Music

BT River of Music is part of the Cultural Olympiad and will feature performances by international and local musicians representing all the Olympic and Paralympic nations. Battersea Park will host the Asia Stage and the ticketed event will be free.

►► Find out more at <http://festival.london2012.com/events>.

July 23 Olympic Torch Relay

The torch arrives in the borough at Southfields and makes its way to Tooting Common for a spectacular free concert in the evening.

►► www.london2012.com/games/olympic-torch-relay.

July 27 Olympic Games start

July 28-29 Men's and women's cycle road races

These will pass through Putney and Roehampton twice each en route from The Mall to Box Hill and back again. Roads in the area are expected to be severely affected for the entire weekend.

►► For details see www.london2012.com/cycling-road.

July 28-August 5 Olympic tennis at Wimbledon

Roads are likely to be congested and parking will be affected in Southfields.

►► More at www.london2012.com/tennis

July 28-August 5 Olympic Route Network in operation

The ORN will be active during the Olympic tennis event. This will affect roads from Wimbledon Parkside to Vauxhall Cross, including Tibbett's Corner, West Hill, Wandsworth town centre, York Road, Battersea Park Road and Nine Elms Lane.

►► See detailed maps at www.tfl.gov.uk/ORN.



Wandsworth on Film

It's home to historic buildings, beautiful parks, vibrant towns and bustling streets, so it's no surprise that Wandsworth is consistently ranked each year as one of the top five boroughs in London for filming.

Over the past year Meryl Streep, Friends star Matt LeBlanc, and pop sensation One Direction have all paid the borough a visit.

Wandsworth hosts more than a thousand filming and photoshoot days every year. Last year, the council raised about £180,000 by approving various film and TV projects – money which is fed back into the town hall, helping ensure council tax remains the lowest in the country.

One of the most popular filming locations remains Battersea Park. Last summer, Meryl Streep visited the green space to film scenes for the Oscar winning *The Iron*

Lady along with Olivia Colman, who played Margaret Thatcher's daughter, Carol.

Also using the park as a backdrop last year were Bollywood blockbuster *Ra One* and *One Direction* who filmed part of their latest music video in the park.

Elsewhere, BBC science programme *Bang Goes The Theory* filmed an experiment testing homemade glue on the diving board at Tooting Lido while in January this year, Balham residents might have spotted Matt LeBlanc in Harrison's while he filmed some of the second series of *Episodes*.

Other productions include BBC spy drama *Page Eight* starring Bill Nighy and Rachel Weisz, which filmed inside Battersea Park and in Prince of Wales Drive, plus *The Inbetweeners Movie*, *Chalet Girl*, *Cockneys vs Zombies*, Woody Allen's *You Will Meet a Tall Dark Stranger*, *New Tricks*, *Ashes to Ashes*, *Above Suspicion*, *The Jury*, *Spooks* and *Law and Order*.



► Residents and businesses who are interested in hiring out their properties to film crews can submit their details to the Film Office's free database at www.wandsworth.gov.uk/film.

change

4 life

Eat well Move more Live longer



South West London

Making a Change4Life doesn't need to be difficult. With a little help, it can be really rewarding and fun. Wandsworth Public Health Department is offering a range of programmes and individual support for almost anyone who wants to live longer and feel fitter by making healthy changes in their lives. See below for a list of the range of fun and exciting programmes available for FREE for people who live, work or go to school in Wandsworth.



Free MoreLife Clubs for young people and their families

The whole-family approach of MoreLife Clubs allows our families to address their health and lifestyle behaviours as a team. Clubs are delivered by MoreLife specialists over 10 or 12 weeks for children and young people aged between 5 -17 years.

To book your FREE place or for more information:
T: 0113 812 5233
E: info@more-life.co.uk
www.more-life.co.uk

Mytime Health - Toddler & Mini Boost

Do you have a child who is 2-5 years of age and are you looking for fun activities to do as a family? If the answer is Yes - then Boost programmes are for you!

These fun, free and interactive programmes designed for young children and their parents/carers, are run over a 12-week period to encourage families in active play and to learn about healthy eating. Sessions are run at various children's centres, libraries and primary schools across the borough.

To book your free place or for more information:
T: 020 8323 1725 Web: www.mytimehealth.org.uk



Momenta weight management programme for adults

Designed by experts, Momenta combines dietary advice, physical activity and behavioural support. The programme helps men and women lose weight and keep it off for good.

To book your FREE place or for more information:
T: 020 7231 7225
E: momenta.wandsworth@mendcentral.org
Web: www.discovermomenta.com



Mytime Health - New Mum New You

Have you recently given birth? If the answer is Yes - this programme is for you! Free nutritional workshops and fun, energy-boosting exercise sessions are here to get you back in shape! Sessions are delivered over a 12-week period to provide the support you need to adopt a healthy and active lifestyle for you and your family!

To book your free place or for more information:
T: 020 8323 1725 Web: www.mytimehealth.org.uk



Wandsworth Arts Festival 2012

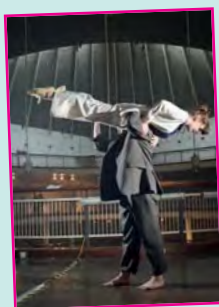


It's time to celebrate arts in Wandsworth.

This year's programme is packed with performances, workshops, exhibitions, installations and activities, across the performing, contemporary and visual arts.

Festival brochures with more details, times and venues are available in libraries and other venues across the borough.

The festival is organised by Wandsworth Council's Arts team, in association with local professional and amateur arts organisations, community groups and individuals. It is funded by Arts Council England.



Highlights

**The Shimmy - Sunday 27
May 1 – 5pm**

St Mary's Church, Putney Warf,
Deodar Road and Wandsworth
Park, SW15 - Free

The Shimmy is an outdoor festival
named because it shimmies between

the variances of what outdoor art can be – offering street art, dance, workshops, installation and interaction.

What does success smell like?

Bio-Organism Substrate Industries (BoSI) are on a mission and will take up residency at Southside Shopping Centre to research success in Wandsworth. And don't miss the Aroma Laboratory on Saturday 26 May to have your own unique 'sweet smell' harvested and bottled by scientists.

Wandsworth Whispers

Wandsworth is re-imagined with creative stories and beautiful tales made by older people living in the Borough.

Birdbrain

Birdbrain takes you on a journey of discovery with our intrepid bird watchers as they go in search of the lesser-spotted Londonium Giganticus.

Green Horses on the Wall

Bicycle Ballet and Recyculture are back this year to show bicycles jumping in and out of buildings throughout the Alton Estate.

Pick and Mix

Come on down to The Brick Box at Tooting Market for festival fun and delicious food, fresh coffee and home baked cakes – with free kids' art workshops every

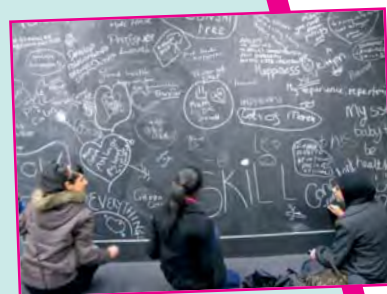
Saturday and the participation of Action Space, Chocolate Films, Nutshell Dance company and Step Into Dance.

The Tooting Transition Shop

It is no ordinary shop - no money changes hands and nothing is on sale. Connect with everyday questions about what it's like to live now. By Encounters Arts and Transition Town Tooting

Opera in the Yard

Enjoy a night of soaring arias and powerful recitals with some outdoor opera in Wandsworth Council's Town Hall courtyard.



Cleveland Watkiss

Britain's leading jazz vocalist presents his acclaimed Vocal Suite in a stunning ex-diary warehouse space by World Heart Beat Music Academy -

Come and Play at Pump House!!

A weekend of fun and games for all ages. In this exciting year of sport ahead, Spots vs Stripes and the Pump House Gallery invited artists to explore the art within games and present performances, workshops and activities for you to compete in with

Are You Sitting Comfortably?

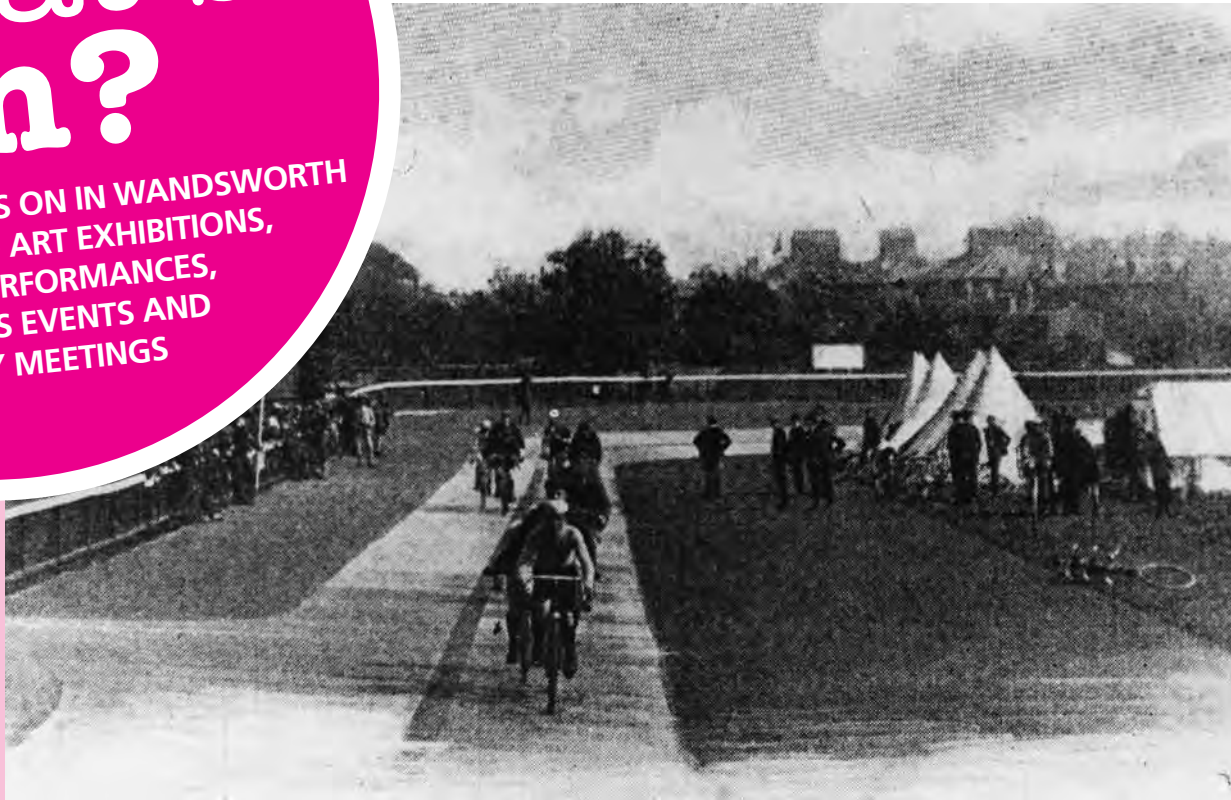
A storytelling variety night by White Rabbit. Accompanied by vintage visuals and live music, free sweets, treats, games, competitions and prizes.



what's on?

WELCOME TO WHAT'S ON IN WANDSWORTH
YOUR GUIDE TO ART EXHIBITIONS,
THEATRE PERFORMANCES,
CHILDREN'S EVENTS AND
SOCIETY MEETINGS

Children's
events are
shaded
yellow



EVENTS FOR APRIL AND MAY

Saturday May 26 – Sunday June 10

Heritage Festival

A fortnight of more than 30 local history events tell the story of where we live and work: the borough of Wandsworth. Festival includes: two popular open mornings of the council's heritage service at Battersea Library on May 30 and June 9; a tour of Whiteland's College and Parkstead House in Roehampton; a walk around Nightingale Lane and an illustrated talk about the Streatham Worthies. A few selected heritage events are listed within these what's on pages; but for the full programme pick up a leaflet or visit www.wandsworth.gov.uk/libraries from early April.

How to be listed

To be included in the June edition send brief details in writing (including access for people with disabilities) to: What's on editor, Room 114a, Town Hall, Wandsworth High Street, SW18 2PU or email whatson@wandsworth.gov.uk to arrive by Friday May 4.

Phone (020) 8871 6362 for general information (entries not accepted by phone).

We cannot guarantee that your entry will be inserted. Entries may have to be edited. This is a free service. The information in this guide has been provided by the advertisers themselves. WBC accepts no responsibility for the accuracy of the information or for any event not organised by the council.

Free entry
Wheelchair access
Hearing loop

**Thursday March 15 –
Sunday May 20 (open
Wednesdays – Sundays
11am-5pm)**

Social States: Baptist Coelho and Nadia Kaabi-Linke

Coelho's art looks at traces of conflict in people and places around Battersea Park, focusing particularly on the First and Second World Wars, while Kaabi-Linke's installation reflects her work with female survivors of domestic violence.

Pump House Gallery
Battersea Park lakeside,
SW11. Call 8871 7572.
www.pumphousegallery.org.uk

**Saturday March 17
7.30pm**

Spring Concert

Programme includes Strauss

"Emperor Waltz" and Mahler "Symphony No.1 in D Major". **Tickets £11, concessions £6, children free.** Tickets available on the door or from orchestra members.

Wandsworth Symphony Orchestra, St Mary's Church, Putney Bridge SW15. Email wso.info@googlemail.com

**Tuesday-Saturday March
20-24, 8.30pm at
Battersea Arts Centre,
Lavender Hill SW11 and
Tuesday-Thursday
March 27-29, 7.30pm at
Tara Arts Studio, 356
Garratt Lane SW18**

Sunday Morning at the Centre of the World

Author Louis De Bernieres' only play which pays tribute to when he lived in Earlsfield, in this unique production by Bad Physics. Half the audience will

experience the show blindfolded and the rest witness the effects created by the reaction of the blindfolded members. De Bernieres will narrate one performance at each venue. **Each venue: tickets £12, concessions £8.** Booking: Tara Arts - 8333 4457 or online www.tara-arts.com; BAC - 7223 2223 or bac.org.uk

**Saturday March 24
7.30pm (with pre-concert
talk at 6.30pm)**

21st century Masterworks

Festival Chorus concert as part of St Luke's Music Society 2011/12 season. **Tickets £10, concessions £6,** on the door from Northcote Music 155 Northcote Road SW11 or by phone or online as below: Festival Chorus at St Luke's

Church, Ramsden Road SW12. Box office 07951 791619. www.slms.org.uk
wheelchair

**Tuesday March 27
1.30pm**

Tea Dance

Put on your dancing shoes and step back into an age of elegance. Battersea Arts Centre Grand Hall, Lavender Road SW11. Call 7223 2223. www.bac.org.uk

**Friday March 30, 9.30am
-12pm**

Easter Fun Morning

Climb aboard a real fire engine, Easter egg hunt and crafts, plant a bulb, tombola, coffee and cakes. All welcome. Jumping Beans Playgroup, Garratt Park One O'clock Centre, 1 Siward Road SW17

what's on?

APRIL - MAY

Saturday March 31
10.30am and 1.30pm

Sam Rose in the Shadows

Uplifting play for families about what it's like to be sad and how one can learn to be happy again. For families with children aged 6 years and above. Tickets £8.50, concessions £7.50.

Tara Arts Studio 356 Garratt Lane SW18. Box office 8333 4457. www.samroseinthesadows.com

Saturday March 31

Music for Passiontide

Rheinburger 'Mass in F minor', "Passiongesang" and Motets by Bruckner, Casals, Lotti, Everett and Gesualdo. SW London Choral Society – please contact them for venue. Call 8673 7890. Tickets email boxoffice@swlcs.org.uk Visit www.swlcs.org.uk



Thursday May 10-Sunday May 13 (Thurs-Fri 2-10pm; Sat-Sun 11am-6pm)

Wimbledon Art Studios

Buy original art from over 140 emerging and established artists, including painters, sculptors, jewellers and photographers. Family fun day on the 13th. Free entry and free parking. Wimbledon Art Studios, Riverside Road SW17. Call 8947 1183. www.wimbledonartstudios.co.uk
wheelchair

Sunday April 1 - Saturday May 12

Short story competition

Submit your 200-word short story on the theme of 'games', which you can interpret as imaginatively as you like. Finalists perform their stories for judges on 25 May, 7.30pm, Balham Bowls Club. Entries to creativewriting@chalkthesun.co.uk www.chalkthesun.co.uk

Tuesday April 3-Friday April 27

Celebrating Dickens

Celebrating Dickens's bicentenary with a series of events, including: April 11 6.30pm – The Orphan in Dickens at Putney Library SW15. Free but book on 8871 7090; April 19, 6.30pm – Dickens and Food at Earlsfield Library SW18. Free but book on 8871 6389; April 27 7.30pm – Mr Dickens is Coming! at Roehampton

University SW15. Tickets £7.50, from any Wandsworth library. Full event programme available from your local library or at www.wandsworth.gov.uk/libraries from end of this month.

Saturday April 7-Monday April 9
10am-5pm

Garden Furniture Sale

Stylish teak and wicker garden furniture available to buy. Chatham Hall, Northcote Road SW11. Call 01954 267857 or visit www.joalexander.co.uk

Monday April 2-Friday April 13

Easter Holiday Fun

Children and young people can choose from playing tennis, practicing their moves with Glee Club dance, trampolining, rowing and more, across the borough at our sports facilities and leisure centres. Download the brochure from www.wandsworth.gov.uk/holidayfun or call 8871 6756 for one to be posted.

Tuesday and Wednesday April 3 and 4, 8.15pm

Baby Care Classes

Small, practical information-rich ante-natal classes to prepare you for life with your baby in the early weeks. At venues across the borough. Call Eilish Saba 7228 1041. www.thebabycarecompany.co.uk

Thursday April 12

Chicken Day

Chicken story-times and chicken portrait drawing, colouring and feather-sticking fun. Cost £1 plus entry fee £6.50 child (2-15 years), £7.95 adult, £26 family ticket. Children's Zoo Battersea Park, SW11. Call 7924 5826. Visit www.batterseazoo.co.uk



Monday March 26 10.30am

Buggy training programme

Weekly training sessions for mums and their babies in buggies organised by the Wandsworth branch of Ready-steady-mums. Suitable for all levels. Non-members can have a free taster session. King George's Park, Mapleton Road SW18. Email alice@readysteadymums.com

Monday April 16 8pm

Living a Dream

An evening with soprano Christine Brewer. Annual subscription £30, visitors temporary membership per meeting £5. Young people under 18 free. Putney Music Dryburgh Hall, Putney Leisure Centre, SW15. Call 8788 0827. www.putneymusic.org.uk
wheelchair

Monday April 16 2-4pm

Treasures of the Tower of London and the Monarchy

Talk by Garry Wykes, a former warden of the crown jewels. Wandsworth University of the 3rd Age Earlsfield Library SW18. Call 8785 0949. Email wandsworthu3a@hotmail.com www.wandsworthu3a.org.uk
wheelchair, loop

Wednesdays April 18 – May 23 7-9.30pm

Upping the ante – structuring your work

Looking at story structure, themes, sub-plot and subtext and editing. Chalk the Sun at Balham Bowls Club, 7-9 Ramsden Road SW12. Call 07852 483001. Email creativewriting@chalkthesun.co.uk www.chalkthesun.co.uk

Wednesday April 18 8-9pm

Dover House Singers Choir

Join our a-capella choir, led by experienced conductor, and singing classical, folk, world and popular music. We meet every Wednesday during term-time. Costs £5 each session. Dover House Singers, St Margaret's Church Hall, Putney Park Lane SW15. Email doverhousesingers@googlemail.com
wheelchair

April 18 – September 30

Get Active Wandsworth Festival

Come and 'get active' this summer and leave a lasting legacy to the London 2012 Games. Countless sports activities and events will be on offer and the festival will include the popular Get Active Day on 14 July at King George's Park. For the programme of events visit



www.wandsworth.gov.uk/active Call 8871 8154 or email active@wandsworth.gov.uk for one to be posted to you.

Tuesday April 10 7pm

Talk: Darwin Family at Downe House and Cambridge

with speaker Enid Stockwell. New members welcome. Earlsfield Evening Guild, Earlsfield Library 276 Magdalen Road SW18. Call 7228 0359.

Monday April 23 for 11 weeks

SchoolReady Classes

Interactive and fun classes help children aged 3-4 years prepare for school and give them the skills they'll need. **Cost: £150 including membership fee.** Balham area. Email Nicolette@schoolready.co.uk www.schoolready.co.uk

Tuesday April 24 9.30am-12.30pm

Emergency First Aid

Course covers care of the unconscious adult, baby and child as well as common injuries and

illnesses. Certificates for those who complete the course. **Cost £60.** Balham-area. Call 8675 4036. Visit www.firstaidforlife.org.uk



Wednesday April 25 7.30pm

Andrew Motion

The 1999-2009 Poet Laureate introduces his sequel to Treasure Island – 'Silver', and reads from his latest book of poems. Tara Arts Studio 356 Garratt Lane SW18. Box office 8333 4457. www.tara-arts.com

Friday April 27 10am-12pm

Meet the Minder

Chance for parents to find out more about home-based day care and meet childminders with

vacancies in an informal setting. Wandsworth Childminder's Association, Aboyne Residents Club Hall, Deeside Road SW17. Email wcma120@yahoo.com or call 8870 5396.

Sunday 29 April 8.30am – 12.30pm

Spring Bird Walk on Wandsworth Common

Free guided walk by Peter Bird, bird recorder for the common. Discover more about the 100+ bird species that visit our common and learn to identify them by sight and sound. Please don't bring pets or young children. Please wear suitable clothing and bring binoculars if you have them. Meet at the train station ticket office, St James' Drive SW18 Call 8871 7530 for more details.

Saturday May 12, 7pm

JS Bach's St Mathew's Passion

Tickets £15, concessions £12. Putney Choral Society, St Paul's Church, Augustus Road Southfields SW18. Call Carrie 07909 981278 Visit www.putneychoralsoc.org.uk **wheelchair**

May 11-27

Wandsworth Arts Festival

Arts events, activities, talks, fringe performances, the Shimmy and more all form part of this year's festival. For full details see page 26.

Monday May 14 8pm

Nicholas Bagshawe: A Very Important Brotherhood

Includes Rossetti, Millais, Holman Hunt and England's early pre-Raphaelites. Visitors £5. South West London Decorative & Fine Arts Society, Dryburgh Hall Putney Leisure Centre SW15. Call 8789 0047.



Term runs April 16 – July 14

Summer Term at Art School

A range of popular art courses to choose from this summer, including digital photography and Photoshop, Illustration, ceramic sculpture, pottery and experimental media. Book your place now. Reduced rates for people aged 60 and over, and Wandsworth residents in receipt of benefits. Putney School of Art and Design Oxford Road SW15. Call 8788 9145. Visit www.wandsworth.gov.uk/psad

Thursday May 17 7.45pm for 8pm

May I Have the Pleasure?

Francoise Carter talks on the importance of dancing in the late 17th and 18th century society. **Free.** Wandsworth Society, West Hill Church, Melody Road SW18. Call 8870 4567. Visit www.wandsworthsociety.org.uk **wheelchair**

Saturday May 19 – Sunday May 20 (Saturday 11am-9pm; Sunday 11am-4pm)

The Monthly Do: Come and Play

In this Olympic year, artists will explore the art within sports games and present performances, workshops and activities for you to compete in. Free admission. Pump House Gallery Battersea Park SW11. Call 8871 7572. www.pumphousegallery.org.uk

Monday May 28 6.30pm

Talk: Blue and Green Plaques

Learn about who has a plaque dedicated to them, and where it's located in the borough. Free but please book. Part of the Heritage Festival.

Battersea Library, 265 Lavender Hill SW11. Call 8871 7466.

Monday May 28 2.30-5pm

Walk: In the Footsteps of Edward and Helen Thomas

Richard Purver and Anne Harvey, members of Edward Thomas Fellowship, lead a walk from Battersea to Balham, taking in places associated with these local authors. Free but please book by emailing dibgodden@aol.com Part of the Heritage Festival. Wandsworth Society. Meet outside Battersea Town Hall, SW11.

Wednesday May 30 4pm

Wandsworth and Royalty

Bring along your memories and discover how royal occasions – including Jubilees – have been celebrated by Wandsworth Council and local people at this drop-in session. Free but you must book. Part of the Heritage Festival. Heritage Service, Battersea Library, 265 Lavender Hill SW11. Call 8871 7753.



National Gardens Scheme Open Gardens

Private gardens opening to the public specially as part of the National Gardens Scheme.

Sunday April 29 and Monday April 30, 2-6pm on Sunday; 6-8pm Monday, – 6 Cornford Grove SW12. Garden has 20 fruiting trees and forest berries merging with herbaceous planting and two working bee hives. Admission £3, children free.

Sunday May 20 2-5.30pm – 28 Old Devonshire Road SW12. Admission £3, children free. Mediterranean-style walled garden full to bursting with planting.

Sunday May 27 3-4.30pm – 2 Western Lane SW12. Admission £3. A horticultural jungle of scented flowers and textured plants.

For more details of these and other open gardens not listed here, please visit www.ngs.org.uk

Contact Us

Do it Online

Pay your council tax

www.wandsworth.gov.uk/counciltax

Pay a parking fine

www.wandsworth.gov.uk/parking/payment

Join the E-library

www.wandsworth.gov.uk/libraries

Search the planning register

www.wandsworth.gov.uk/planningregister

Find your local councillor

www.wandsworth.gov.uk/councillors

Check your refuse collection day

www.wandsworth.gov.uk/refusemap

Other contacts at the council

Abandoned Cars

(020) 8871 6709
abandonedvehicles@wandsworth.gov.uk

Benefits Service

(020) 8871 8080
benefits@wandsworth.gov.uk

Carers information and support Wandsworth Carers Centre

(020) 8877 1200
info@wandsworthcarers.org.uk

Children and Families Services

(020) 8871 6622
childreferralmanager@wandsworth.gov.uk

Consumer Protection

(020) 8871 7720
esd@wandsworth.gov.uk

Community Care Services

(020) 8871 7707
accessteam@wandsworth.gov.uk

Council Tax

(020) 8871 8081
counciltax@wandsworth.gov.uk

Find your local councillor

(020) 8871 6060
Reception, MH@wandsworth.gov.uk

Cycle Training

(020) 8871 6670
cycletraining@wandsworth.gov.uk

Drugs Hotline

- to report drug abuse/debris
(020) 8871 7373
drugsreporting@wandsworth.gov.uk

Education

(020) 8871 8013
edadmin@wandsworth.gov.uk

Electoral Services

(020) 8871 6023
electoral@wandsworth.gov.uk

Environmental Services

(020) 8871 6127
esd@wandsworth.gov.uk

Family Information Service

- including Nurseries
(020) 8871 7899
fis@wandsworth.gov.uk

Food Hygiene

(020) 8871 6139
esd@wandsworth.gov.uk

Fraud Hotline

0800 783 2263 (freephone)
fraudhotline@wandsworth.gov.uk

Graffiti Removal

(020) 8871 7049
graffiti@wandsworth.gov.uk

Health, care and wellbeing

(020) 8875 0500
acis@wandsworth.gov.uk

Home Ownership

(020) 8871 6016
housesales@wandsworth.gov.uk

Housing Advice

(020) 8871 6840
housingadvice@wandsworth.gov.uk

Housing Repairs and Tenancy

Call your area team or
management organisation
hms@wandsworth.gov.uk

Leisure Centres & sports facilities

(020) 8871 8154
sportsservices@wandsworth.gov.uk

Libraries

(020) 8871 7269
libraries@wandsworth.gov.uk

Neighbourhood Watch

(020) 8871 7696
watchlinkmanager@wandsworth.gov.uk

Noise Complaints

- council properties
(020) 8871 7490
hms@wandsworth.gov.uk

Noise Complaints

- private properties
(020) 8871 7869
esd@wandsworth.gov.uk

Parking Helpline

(020) 8871 8871
parking@wandsworth.gov.uk

Parks

(020) 8871 6347
parks@wandsworth.gov.uk

Parks Police

(020) 8871 7532/6789
parkspolice@wandsworth.gov.uk

Pavement and road defects

(020) 8871 6708
highways@wandsworth.gov.uk

Rubbish, Recycling and Litter

(020) 8871 8558
wasteservices@wandsworth.gov.uk

Births, Deaths, Weddings and Civil Partnerships

(020) 8871 6121
registeroffice@wandsworth.gov.uk

What's On in Wandsworth

(020) 8871 6832
whatson@wandsworth.gov.uk

Youth Clubs

(020) 8871 7553
youthservice@wandsworth.gov.uk



weekly e-newsletter
www.wandsworth.gov.uk/24seven



www.facebook.com/wandsworth.council



www.twitter.com/wandbc



www.youtube.com/WandsworthBC

If you have questions about this publication please call (020) 8871 6173

BrightSide is available in large print or audio tape.

To obtain a copy of either please telephone (020) 8871 7266 or email brightside@wandsworth.gov.uk.

YOUR BRIGHTSIDE

Your BrightSide is distributed by London Letterbox Marketing. We expect all copies of BrightSide to be delivered to every home in the borough and pushed fully through the letterbox. This issue of BrightSide is being delivered from March 16 to March 19. Your next BrightSide will be delivered from May 30. If you don't receive your copy call us on (020) 8871 7520. BrightSide is the civic magazine of Wandsworth Council.

It is produced by the council's corporate communications unit. It is the only publication delivered to every household in the borough. We would like to thank all our advertisers for their support. BrightSide will consider display

advertisements from non-council bodies (excluding recruitment) and reserves the right to decline advertisements.

The council neither accepts responsibility for the content of nor endorses any non-council advertisements.

- Editorial (020) 8871 8902
- Advertising (020) 8871 7266

If you have a comment about the magazine please telephone: (020) 8871 8902/6173 or email: brightside@wandsworth.gov.uk. BrightSide is printed on environmentally friendly paper, please recycle.





Working together for a safer London

**WE ARE APPEALING FOR WITNESSES
CAN YOU HELP US?**

BIKE THEFT

**Four bikes are stolen
in Wandsworth
EVERY DAY!**

Don't let your bike be the victim



London
CRIMESTOPPERS
0800 555 111
Call anonymously with information about crime

Produced in collaboration with young people at the Wandsworth Youth Offending Team

For advice on bicycle security

call: 020 8871 6567

email: communitysafety@wandsworth.gov.uk

number one for
service and value



AD.1018 (2.12)

Viewing now

Notting Hill Home Ownership is proud to introduce Flotilla House. Fronting onto York Road this 11 storey private sale and Shared Ownership building comprises of eight 1 bedroom and nineteen 2 bedroom Shared Ownership apartments for sale.



BATTERSEA REACH RIVERSIDE LIVING



TO BOOK A VIEWING CONTACT OUR SALES TEAM:

020 8357 4444

sales@nhhg.org.uk

nottinghillhousing.org.uk/batterseareach

Eligibility: To be eligible for a Shared Ownership home at Battersea Reach you must be a first time buyer living in the borough of Wandsworth. You will also need to register with Wandsworth Council's Home Ownership Team. For joining details please call 020 88716017, or follow the link on www.wandsworth.gov.uk/homeownership
Featured image: computer generated

Nottinghill Housing working in partnership with Wandsworth



 **FIRST STEPS**
to home ownership in London



Nottinghill Housing