

Updated
November 2020

Specialist independent shops directory



CONTENTS

BALHAM	6
BATTERSEA	10
EARLSFIELD	18
FURZEDOWN	22
PUTNEY	24
ROEHAMPTON	29
SOUTHFIELDS	30
TOOTING	32
WANDSWORTH	36
WANDSWORTH COMMON	39
LOCAL MARKETS	40
SHOP STORIES	42

This is not a definitive list, if you own or know a shop which should be added, please let us know, lorinda.freint@richmondandwandsworth.gov.uk



INTRODUCTION

The last few months have been incredibly hard for businesses. Small businesses and the self-employed are crucial to the local economy – they need your support!

From groceries to the latest phones, there is no denying that the internet makes it easy to compare the price of shopping, and retail today is a fast-changing world. But in this fast-changing environment our local specialist shops provide a constant source of good advice, strong community relations, ongoing support and convenience. It is therefore my pleasure to recognise and celebrate their value in this directory.

Many of these businesses have been around a long time whilst others are new, but they all provide a service to the local community. We showcase some of the stories of the businesses in this publication and we pay tribute to the spirit of enterprise which is so evident throughout Wandsworth.

I believe that you will find this guide useful not only when in need of a service or product from one of the businesses but also in discovering new products and services.

There are many other good reasons why it is worth going local for some of your shopping and entertainment.

YOUR SPENDING BOOSTS THE LOCAL ECONOMY

Research shows that for every £1 spent with a small or medium-sized business 63p stays in the local economy, compared to 40p with a larger business. The American Express study High Streets Ahead showed that over the last decade the rise in property values in or near town centres with a large number of thriving independent businesses was 17% higher than the growth in other areas with fewer independent traders. Colin Walsh, the Managing Director of American Express UK said: 'This report identifies what we're calling the 'shop small effect', which is the reciprocal benefit consumers can enjoy simply by supporting their local independent traders.'



Councillor Aled Richards-Jones
Cabinet Member for Economic
Development, Skills and Employment

INTRODUCTION

LOCAL IS QUIRKY AND INTERESTING

Small or medium sized businesses often stock items that are made locally and are not available elsewhere: buy a hat by a local designer and there is little chance of turning up at that wedding only to see the same thing worn by another guest! When looking for a gift it is worth remembering that quirky, one-off items are the forte of independent shops.

Local shops often support local food producers, distillers, brewers, artists and designers, which means you have the opportunity to buy products unique to your area.

YOU WILL BE SUPPORTING LOCAL ENTREPRENEURS

Independent businesses help to nurture local talent and innovation. Small businesses are quick to respond to the demands of customers, they can implement changes and new products much faster than large businesses. An additional bonus is that by suggesting new products and services customers have the ability to exert influence over the offer.

YOU HELP BUILD COMMUNITIES

Small businesses make a huge contribution to a community's identity; creating character and appeal. Entrepreneurs and small business owners are an integral part of the communities in which they trade - they often live in the community and therefore have the interests of their community at heart. Small businesses play important roles in local activities and initiatives.

YOU MAY GET BETTER DEALS, GOOD ADVICE AND RECOMMENDATIONS.

Independent retailers often reward their regular customers, they know their products and are able to make good recommendations. The relationship with the customer plays an important role in the success of a small business and at the same time provides the customer with a service and experience that is hard to replicate.

OPPORTUNITY TO MAKE AN INFORMED CHOICE

Major retailers and on-line businesses can often offer lower prices due to economies of scale. However, there is much more scope for wasting money on something which may not meet your expectations. Local businesses frequently have tasting events or provide samples for customers to try before making a purchase.

For all these reasons I urge you to use this directory and to support your local businesses. Christmas sales make up an important percentage of the annual turnover of businesses and lack of trade at Christmas can seriously damage small businesses. Use your local businesses.

If you are unable to visit your local shops, please consider ordering from them online where possible – websites are provided in this directory.

BALHAM



Antiques, Art and Picture Framing

Gallery Midnight 12 Ritherdon Road, SW17 8QD **T:** 07779 097316 **W:** www.gallerymidnight.com

Mimi V Artworks 81 Balham High Road, SW12 9AP **T:** 07506 069300 **W:** www.balhamartworks.co.uk

Robbie's Studio 9 The Boulevard, Balham High Road, SW17 7BW **T:** 020 8767 4222 **W:** www.robbiesphotographics.com

Bakeries

Deelight Bakery 14 Ritherdon Road, SW17 8QD **T:** 020 8672 0250 **W:** www.deelightbakery.com

Foxcroft & Ginger 8 Ritherdon Road, SW17 8QD

Butchers and Fishmongers

Chadwicks Butchers 109 Balham High Road, SW12 9AP **T:** 020 8772 1895 **W:** www.chadwicksbutchers.com

Fair Price Halal Meat & Poultry 22 Hildreth Street, SW12 9RQ **T:** 020 8673 7285

Moxon's, Units D & E. Clapham South Underground Station, Nightingale Lane, SW4 9AE

T: 020 86752468 **W:** www.moxonsfreshfish.com

Car parts and Car maintenance

Alpine Motors 40 Old Devonshire Road, SW12 9RB **T:** 020 8673 5378

Auto Centre South 21A Harberson Road, SW12 9QW **T:** 020 8673 6178

Cards and Gifts

Lark 24 Bedford Hill, SW12 9RG **T:** 020 8675 2345 **W:** www.larklondon.com

Postmark 123 Balham High Road, SW12 9AR **T:** 020 8675 7272 **W:** www.postmarkonline.co.uk

Children's clothing, footwear, buggies and nursery furniture

Natural for Baby 78 Balham High Road, SW12 9AG **T:** 020 8673 2672 **W:** www.naturalforbaby.london

Children's Play

Bertie and Boo Adventure Island 205 Balham High Road, SW17 7BQ **T:** 020 36201785 **W:** www.bertieandboo.com

Clothing

Nkiruka African Textiles 4 Balham Station Road, SW12 9SG **T: 020 8675 7811**

Cookware and Kitchens

Season Cookshop 99 Balham High Road, SW12 9AP **T: 020 8673 7067 W: www.seasoncookshop.co.uk**

London Koncepts 50-52 Balham High Road, SW12 9AQ **T: 020 87720149 W: www.londonkoncepts.com**

Cycle Shop, Cycle maintenance

Cyclopolis 54 Balham High Road, SW12 9AQ **T: 020 8673 7153 W: www.cyclopolis.co.uk**

Psubliminal 17 Balham High Road, SW12 9AJ **T: 020 8772 0707 W: www.psubliminal.co.uk** SHOP STORIES

Delicatessens

Brindisa 6 Hildreth Sreet, SW12 9RQ **W: www.brindisa.com/pages/brindisa-cheese-and-charcuterie-balham**

PanAdam 2 Marius Road, SW17 7QQ **T: 020 8673 4062**

DIY and Hardware (Building Supplies)

Balham Paint and Hardware Company 22 Bedford Hill, SW12 9RG

T: 020 8675 9866 W: www.diystores.balham.co.uk SHOP STORIES

Handy Stores 49 Balham Hill, SW12 9DR **T: 020 8673 4377**

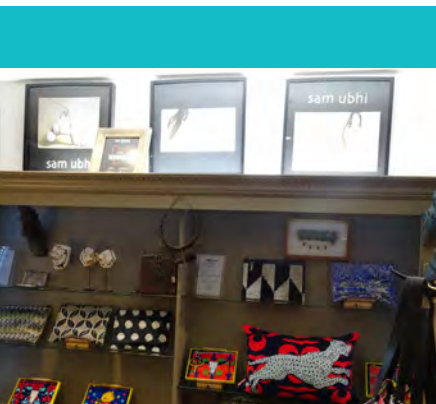
Electronics, HiFi, Computers and Mobile phones

E Computing 20 Hildreth Steet, SW12 9RQ **T: 020 8673 0300 W: www.e-computing.co.uk**

SUUF! Internet Access 26 Hildreth Street, SW12 9RQ **T: 020 8673 2117**

Phonefix.uk.com 131 Balham High Road, SW12 9AQ





BALHAM

Floor coverings

A Flooring Boutique 71 Bedford Hill, SW12 9HA **T: 020 8673 9900 W: www.aflooringboutique.co.uk**

Balham Flooring Studio 12 Station Parade, Balham High Road, SW12 9AZ **T: 020 8673 0680 W: www.balhamflooring.com**

The Wooden Floor Specialists 269 Cavendish Road, SW12 0PH **T: 020 8675 2431 W: www.woodenfloors.co.uk**

Florists

Clapham Flowers Unit C Nightingale Lane, Clapham South Underground Station, SW4 9AE

Petals of Balham Hildreth Street Market, SW12 9RQ

The Flower Sanctuary 8 Hildreth Street, SW12 9RQ **T: 020 8675 3799 W: www.lowersanctuary.co.uk**

The Flower Stall at Balham Station, SW12 9BW

Fabric, Haberdashery, Sewing, Sewing Machines and Crafts

Pak Cloth House 4 The Boulevard, Balham High Road, SW17 7BW **T: 020 7205 4046**

Cosmetics

Charlotte Cave 105 Balham High Road, SW12 9AP **T: 0208 673 4343 W: www.charlottecave.com**

Cosmetica 4 Hildreth Street, SW12 9RQ **T: 020 7205 4046**

Home furnishings, Curtains

Balham Beds 47 to 51 Balham High Road, SW12 9AW **T: 020 8675 2050 W: www.balhambeds.com**

Curtain Workshop 241 Balham High Road, SW17 7BE **T: 020 8877 0167 W: www.curtainworkshop.co.uk**

Jewellery

Sam Ubhi 7 Bedford Hill, SW12 9ET **T: 020 8673 4558 W: www.samubhi.com**

Luggage

lug-It 133 Balham High Road, SW12 9AU **T: 020 8675 6494**

Opticians

Clair Vision Ltd. 164 Balham High Road, SW12 9BW **T:** 020 8675 3368 **W:** www.clairvision.co.uk

Pets, Pet care, Dog walking

Downtown Woof 15 Balham High Road, SW12 9AJ **T:** 020 3929 2101 **W:** www.downtownwoof.com

The Dog House 72 Emmanuel Road, SW12 0HR **T:** 020 8675 7711 **W:** www.thedoghousebalham.co.uk

Photography and Photographic printing

Robbie's Studio 9 The Boulevard, Balham High Road, SW17 7BW **T:** 020 8767 4222 **W:** www.robbiesphotographics.com

Printing and Signs

Creative Design & Print Centre 6 The Boulevard, Balham High Road, SW17 7BW **T:** 020 8675 7875

Tech-Graphix Signs 5 The Boulevard, Balham High Road, SW17 7BW **T:** 020 8673 4484 **W:** www.techgraphixsigns.co.uk

Shoes, Shoe repairs

J Rogers & Sons Balham Underground, SW12 9SG **T:** 020 8772 1853

Marona Shoes 135 Balham High Road, SW12 9AU **T:** 020 3441 2425

Matthews Shoe Repairers 35 Balham Hill, SW12 9DX **T:** 020 8675 7643

Vape

Balham Vape 7 Balham Station Road, SW12 9SG **T:** 07985 260973 **W:** www.balhamvape.business.site

Wine, Craft beer

Clapton Craft 28 Hildreth Street, SW12 9RQ **T:** 020 3489 5355 **W:** www.claptoncraft.co.uk

The Wine Tasting Shop 18 Hildreth Street, SW12 9RQ **T:** 020 8616 8658 **W:** www.thewinetastingshop.co.uk **SHOP STORIES**

The Wine Twit 85 Nightingale Lane, SW12 8NX **T:** 020 8675 0285 **W:** www.thewinetwit.com





BATTERSEA

Antiques

New Vintage 256 Battersea Park Road, SW11 3BP **T:** 0203 490 6097 **W:** www.newvintage.co.uk

Art, Art galleries, Picture framing

The Art Movement 61 Queenstown Road, SW8 3RG **T:** 07973 692494 **W:** www.art-movement.com

Bianca Smith Art 61 Queenstown Road, SW8 3RG **T:** 020 7738 8831 **W:** www.biancasmithart.com

The Bright Emporium 103-105 St John's Hill, SW11 1SY **T:** 020 7326 9140 **W:** www.thebrightemporium.com

Foss Fine Art 113B Northcote Road, (entrance Wakehurst Road), SW11 6PW **T:** 020 7738 0838 **W:** www.fossfineart.com

The Last Supper 42 Webbs Road, SW11 6SF **T:** 020 7223 8900 **W:** www.the-lastsupper.com

London Framing Studio 113 Lavender Hill, SW11 5QL **T:** 020 7223 9334 **W:** www.londonframing.co.uk

Northcote Gallery 110 Northcote Road, SW11 6QP **T:** 020 7924 6741 **W:** www.northcotegallery.com

Webbs Fine Art Gallery 1, Burland Road, SW11 6SA **T:** 020 7223 1733 **W:** www.webbsfineartgallery.co.uk

Bookshops

The Cornerstone Christian Bookshop 299-301 Lavender Hill, SW11 1LN

Building supplies, Doors, DIY, Fireplaces, Windows and Glass

Barkers Home & Building Supplies 8 Queenstown Road, SW8 3RX **T:** 020 7622 0122 **W:** www.barkersdiy.com

Calanpoint 52 Linford Street, SW8 4UN **T:** 020 7627 4740 **W:** www.calanpoint.com

Chesney's 194 - 200 Battersea Park Road, SW11 4ND **T:** 020 7627 1410 **W:** www.chesneys.co.uk

Décor Express 44 - 48 Lavender Hill, SW11 5RH **T:** 020 7228 1122 **W:** www.decor-express.co.uk

The Door Shop 312-314 Battersea Park Road, SW11 3BU **T:** 020 7924 4766 **W:** www.thedoorshopbattersea.com

Frameless glass Glasstrends 163A St. John's Hill, SW11 1TQ **T:** 020 7223 4017 **W:** www.glasstrends.co.uk

The Glass Shop 214 Battersea Park Road, SW11 4ND **T:** 020 7720 7466

LHP Lavender Heating and Plumbing 2 Queenstown Road, SW8 3RX **T:** 020 7622 8768

Lavender Hill DIY 147 Lavender Hill, SW11 5QJ **T:** 020 7223 8800 **W:** www.lavenderhilldiy.com

The London Door Company 155 Saint John's Hill, SW11 1TQ **T:** 020 7801 0877 **W:** www.londondoor.co.uk

Marmorea 290 Battersea Park Road, SW11 3BT **T:** 020 7937 7420 **W:** www.marmorealondon.com

BATTERSEA

Potter Perrin 142 St John's Hill, SW11 1SN **T:** 020 7223 1007 **W:** www.potterperrin.com

Sash Windows London 90 St Johns Hill, SW11 1SH **T:** 020 7228 2346 **W:** www.sashwindowslondonltd.co.uk

Sheerglass 337 Battersea Park Road, SW11 4LS **T:** 020 7622 5927 **W:** www.sheerglassltd.co.uk

SPC Ltd 119 St John's Hill, SW11 1SZ **T:** 020 7228 0707 **W:** www.spc-ltd.com

Butchers

Hennessy 80 Northcote Road, SW11 6QN **T:** 020 7228 0894

Family Butchers 164 Battersea Bridge Road, SW11 3AW **T:** 020 7228 8187

Children and babies wear

Mori 97 Northcote Road, SW11 6PL **T:** 020 3489 9510 **W:** www.babymori.com

Olivier London 151 Northcote Road, SW11 6QB **T:** 020 7228 8777 **W:** www.olivierbaby.com

Clothing

Denner Cashmere 114 St John's Hill, SW11 1SJ **T:** 0844 922 0058 **W:** www.dennercashmere.co.uk

Cycle Shops, Cycle maintenance

Get a Grip Bicycle Workshop 19 Lavender Hill, SW11 5QW **T:** 020 7223 4888 **W:** www.getagripbicycleworkshop.co.uk

Flag Bikes 324 Battersea Park Road, SW11 3BX **T:** 020 7738 9469 **W:** www.flagbikes.com

London Cycle Workshop 125 St Johns Hill, SW11 1SZ **T:** 020 3441 1044 **W:** www.thelondoncycleworkshop.co.uk

Phoenix Cycles 59a Battersea Bridge Road, SW11 3AU **T:** 020 7738 2766 **W:** www.phoenix-cycles.co.uk

Food, Delicatessen, Honey, Vegetarian, Vegan

Abilio's Portuguese Café & Deli 62-64 Culvert Road, SW11 5AR **T:** 07767 296998

Biscuiteers Biscuit Boutique and Icing Café 13 Northcote Road, SW11 1NG

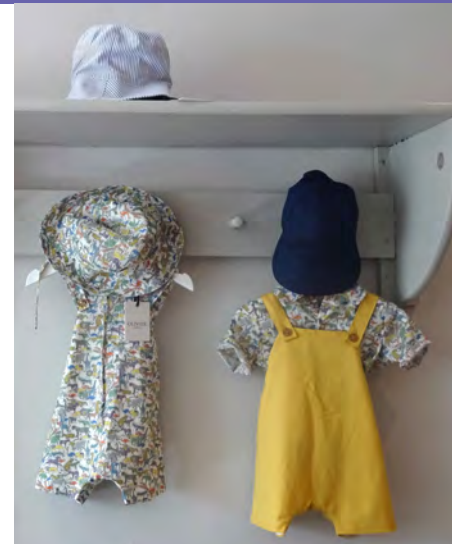
T: 020 7924 5488 **W:** www.biscuiteers.com **SHOP STORIES**

Hamish Johnston 48 Northcote Road, SW11 1PA **T:** 020 7738 0741 **W:** www.hamishjohnston.com

The Source Bulk Foods 99 St John's Road, SW11 1QY **T:** 020 7924 7333 **W:** www.thesourcebulkfoods.co.uk

Tierra Verde 48 Webb's Road, SW11 6SF **T:** 0207 228 4465 **W:** www.tierraverde.co.uk

Zero Waste Store Het-U 201 St. Johns Hill, SW11 1TH **T:** 07391 700816 **W:** www.hetu.co.uk





BATTERSEA

Gifts, Ceramics, Pottery

Huttons 29 Northcote Road, SW11 1NJ **T:** 020 7223 5523 **W:** www.huttonsdirect.com

Lizzies 71 Webb's Road, SW11 6SD **T:** 020 7738 2973

Pottery Café 153 Northcote Road, SW11 6QB **T:** 020 7223 3388 **W:** www.pottery-cafe.com

Sammy Duder 67 Webb's Road, SW11 6SD **T:** 020 7223 6377 **W:** www.sammyduder.com

Greengrocer

Raynsford's 153 Battersea High Street, SW11 3JS **T:** 020 7228 6607

Haberdashery, Knitting, Upholstery, Sewing

Fabrics Galore 52-54 Lavender Hill, SW11 1RH **T:** 020 7738 9589 **W:** www.fabricsgalore.co.uk

Honor Parry, Knitting Supplies 206 Battersea Park Road, SW11 4ND **T:** 020 7622 5553

Sewing Centre, Sewing Machines 266 Battersea Park Road, SW11 3BP

T: 020 7738 9040 **W:** www.directsewingmachines.co.uk

Southern Foam and Upholstery Foam and latex for upholstery 97 St John's Hill, SW11 1SY

T: 020 7228 0805 **W:** www.southernfoamsw11.co.uk

The Upholstery Workshop 3 Webbs Road, SW11 1XJ **T:** 020 7738 1003 **W:** www.theupholsteryworkshop.com

Hardware

Kitchen Shoppe 248-250 Lavender Hill, SW11 1LJ **T:** 020 7223 8882 **W:** www.kitchen-shoppe.business.site

Rainford Hardware DIY 212 Battersea Park Road, SW11 4ND **T:** 020 7657 2186 **W:** www.rainfordhardware.co.uk

Health and Wellbeing

Apples and Bees 258 Battersea Park Road, SW11 3BP **T:** 020 7223 3330 **W:** www.applesandbees.com

Verde 113A Northcote Road (entrance Wakehurst Road), SW11 6PW **T:** 020 7223 2095 **W:** www.verde.co.uk

Windfall Natural 92 Northcote Road, SW11 6QN **T:** 020 3643 0086 **W:** www.windfallnatural.co.uk [SHOP STORIES](#)

Hifi, Audio visual

1st Stop Audio Visual 186 Northcote Road, SW11 6RE **T:** 020 7978 6262 **W:** www.1ststopht.com

Oranges and Lemons 61-63 Webbs Road, SW11 6RX **T:** 020 7924 2040 **W:** www.oandlhifi.co.uk

Home furnishings, Flooring, Floor coverings, Curtains and Blinds, Lighting

@1 1 Webb's Road, SW11 1XJ **T:** 020 7924 5450 **W:** www.1webbsroad.com

Admiral Carpets The Parade St. John's Hill, SW11 1TG **T:** 020 7585 1155 **W:** www.admiralcarpets.com

Barbara Genda 44 Queenstown Road, SW8 3RY **T:** 020 7978 2349 **W:** www.barbara-genda.com

Battersea Carpets 58 Battersea Park Road, SW11 4JP **T:** 020 7622 5913 **W:** www.batterseacarpets.co.uk

Blackbird London 2 Ashness Road, SW11 6RY **T:** 020 7738 2105 **W:** www.blackbird-london.com

Bowloom 127 Queenstown Road, SW8 3RH **T:** 020 7622 0500 **W:** www.bowloom.co.uk

The Cabinet Room 113d Northcote Road, SW11 6PW **T:** 07786 880 553

Capitol Carpets 117 St Johns Hill, SW11 1SZ **T:** 020 7228 7167 **W:** www.capitolcarpets.co.uk

The Carpet Gallery 541 Battersea Park Road, SW11 3BL **T:** 020 7 924 3678 **W:** www.thecarpetgallerybattersea.com

Dogan 171 St Johns Hill, SW11 1TQ **T:** 020 7228 5339 **W:** www.doganlondon.co.uk

Falcon Furnishers 67 Falcon Road, Battersea, SW11 2PG **T:** 020 7585 1809

Floors for thought 103-105 Battersea Rise, SW11 1HW **T:** 020 7924 4334 **W:** www.floorsforthought.co.uk

Forbes & Lomax 213, St. John's Hill, SW11 1TH **T:** 020 7738 9224 **W:** www.forbesandlomax.com

Frenchy Furniture 46 Queenstown Road, SW8 3RY **T:** 020 7 622 9786 **W:** www.frenchyfurniture.com

Inform 99 St John's Hill, SW11 1SY **T:** 020 7228 3335 **W:** www.informfurniture.co.uk

The London Cushion Company 30 Queenstown Road, SW8 3RX **T:** 020 3417 2110 **W:** www.londoncushioncompany.com

Latchmere Handmade Furnitures 513 Battersea Park Road, SW11 3BN **T:** 020 3712 1707 **W:** www.latchmeres.co.uk

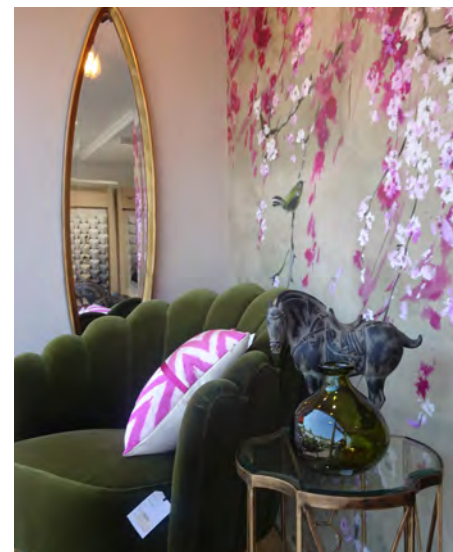
Maison Curate 61 Northcote Road, SW11 1NP **T:** 020 3813 5598 **W:** www.maisoncurate.com

Material Concepts 168-170 Battersea Park Road, SW11 4ND **T:** 020 7622 6495 **W:** www.materialconcepts.co.uk

The Painthouse 52 Northcote Road, SW11 1PA **T:** 020 7350 2153 **W:** www.thepainthouse.com **SHOP STORIES**

St John's Hill lighting 205 St. John's Hill, SW11 1TH **T:** 020 7924 2055 **W:** www.superlites.co.uk

Trunk 48 Queenstown Road, SW8 3RY **T:** 020 7498 9665 **W:** www.trunksurfaces.com





BATTERSEA

Wallace Cotton 65 Northcote Road, SW11 1NP **T: 0800 024 8475 W: www.wallacecotton.co.uk/battersea**

Wall to Wall Interiors Ltd 549 Battersea Park Road, SW11 3BL **T: 020 7585 3335**

Waxed Floors 92 Battersea Rise, SW11 6NS **T: 020 7738 1620 W: www.waxedfloors.co.uk**

Wood Empire Interiors 557-561 Battersea Park Road, SW11 3BL **T: 020 7738 0808 W: www.weinteriors.co.uk**

Ironmongery

SDS London 183 Northcote Road, SW11 6QE **T: 020 7228 1185 W: www.sdslondon.co.uk**

Kitchens, Bathrooms, Interiors

Decara Home 125 Queenstown Road, SW8 3RH **T: 020 7622 3388 W: www.decara-home.co.uk**

Domus 60 Queenstown Road, SW8 3RY **T: 020 7819 2300 W: www.domusgroup.com**

BPM Kitchens 28-30 Lavender Hill, SW11 5RN **T: 020 7738 9475 W: www.bpmkitchens.co.uk**

Katy Ellis 20 Lavender Hill, SW11 5RN **T: 020 7223 6115 W: www.katyellisinteriordesign.com**

Porter Bathroom 43 Queenstown Road, SW8 3RG **T: 020 3355 1817 W: www.porterbathroom.com**

The Brownhouse Interiors Ltd 42 Queenstown Road, SW8 3RY **T: 07984 784 169 W: www.thebrownhouseinteriors.com**

Men's Clothing

Palmer 125C Northcote Road, SW11 6PS **T: 020 7978 4588 W: www.palmersuits.co.uk**

Motor Spares

Russell Motors 125-127 Falcon Road, SW11 2PE **T: 020 7228 1714 W: www.russellmotors.co.uk** **SHOP STORIES**

Music, Musical instruments

Drumshack 58 Lavender Hill, SW11 5RQ **T: 020 7228 1000 W: www.drumshack.co.uk**

Guitar Classics 38 Webbs Road, SW11 6SF **T: 020 7738 2974 W: www.guitar-classics.co.uk**

Opticians

Bellmores 126 Northcote Road, SW11 6QU **T: 020 7228 8200 W: www.bellmoresopticians.com**

Karen Lockyer 98 St John's Road, SW11 3BS **T: 020 7228 0467 W: www.karenlockyer.com**

Pets, Dog grooming

Barking Betty 216 Battersea Park Road, SW11 4ND **T: 020 8127 8635 W: www.barkingbetty.com**

Diana and George 250 Battersea Park Road, SW11 3BP **T: 07584 019169 W: www.diana-george.co.uk**

London Dog Grooming Company 216 Battersea Park Road, SW11 4ND **T: 020 8127 8635**

W: www.londondoggroomingcompany.co.uk

Northcote Pet Store 82 Northcote Road, SW11 6QN **T: 020-7228 7185**

Phone repairs

Ifix Centre 86 Battersea Rise, SW11 1EJ **T: 020 7228 1888 W: www.ifixcentre.co.uk**

Professional supplies

Doppio Coffee Machines and wholesale coffee 336 Battersea Park Road, SW11 3BY

T: 020 7924 4033 W: www.doppiocoffee.co.uk

The Party Shop 268-274 Lavender Hill, SW11 1LJ **T: 020 7924 3210 W: www.partysuperstores.co.uk**

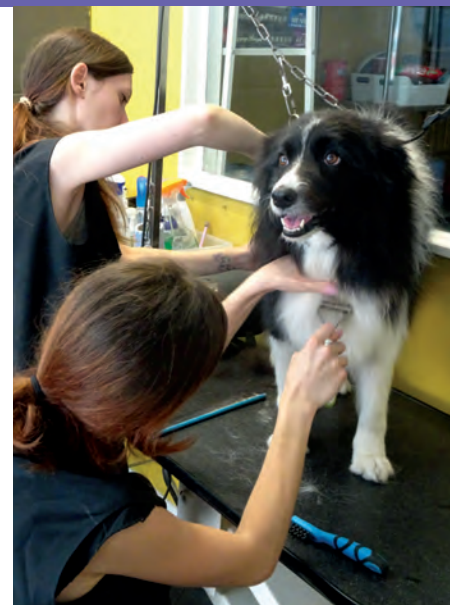
Shoe repairs

Alex Shoe Repairs 103C Lavender Hill, SW11 5QL **T: 020 7223 4931**

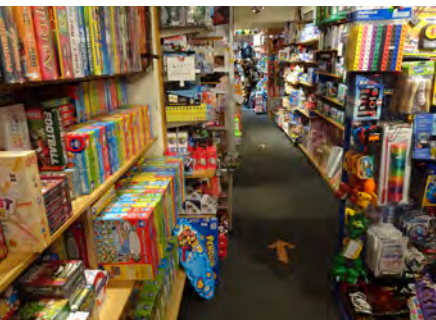
Quick Heel Bar 91 St. John's Road, SW11 1QY **T: 020 7924 1276**

Sportswear

A J Sports 61 Broomwood Road, SW11 6HU **T: 0333 207 0343 W: www.ajfordham.com**



BATTERSEA



Stationers, Print, Signage

Gee Brothers 221 St. John's Hill, SW11 1TH **T:** 020 7228 4081 **W:** www.geebrothers.co.uk

Partridges 295 Lavender Hill, SW11 1LP **T:** 020 7228 7271

Power Print 111 Lavender Hill, SW11 5QL **T:** 020 7223 8953 **W:** www.pprint.co.uk

Print Design Co 170 Lavender Hill, SW11 5TG **T:** 020 7223 5363 **W:** www.theprintdesign.co.uk

SignTair 50 Lavender Hill, SW11 5RH **T:** 07728 394094

Sustainable

Refind Battersea 228 Battersea Park Road, SW11 4ND **T:** 020 7720 2234 **W:** www.refindlondon.com

Tailors, Dress alterations

Alter Ego 24 Lavender Hill, SW11 5RN **T:** 020 3609 1194

Alterations Matter Arch 14 14 Ingate Place, SW8 3NS **T:** 020 7498 4360 **W:** www.designandalter.com

Francis of London 10 Lavender Hill, SW11 5RW **T:** 020 7738 0123

Tailor Victoria Stitch 282 Battersea Park Road, SW11 3BS **T:** 020 3583 0773 **W:** www.victoriastitch.co.uk

Tattoo

Kinky Ink 93 Battersea Rise, SW11 1HW **T:** 020 7223 3666 **W:** www.kinkyinktattoo.com

The Iron Wasp 135A Lavender Hill, SW11 5QJ **T:** 020 7924 5666

Toys and Games

Chalkboard 60 Northcote Road, SW11 1PA **T:** 020 7924 7066 **W:** www.chalkboardshop.co.uk SHOP STORIES

QT Toys 90 Northcote Road, SW11 6QN **T:** 020 7223 8673 **W:** www.qttoyslondon.com

Travel

Turquoise Travel 147 Northcote Road, SW11 6QB **T:** 020 7147 7087 **W:** www.turquoiseholidays.co.uk

Vape

E-cig 145 Lavender Hill, SW11 5QJ

Vape Plug 4 Lavender Hill, SW11 5RW **T: 07766 791 461**

Vapes Tech Check 100 St. John's Road, SW11 1PX **T: 07481 107 406**

Wine, Craft beer

Mondo Brewery Company 86-92 Stewarts Road, SW8 4UG **T: 020 7720 0782 W: www.mondobrewingcompany.com**

North & South Wines 63 Broomwood Road, SW11 6HU **T: 020 7228 2431 W: www.northandsouthwines.co.uk**

Nysa Wine & Spirits 7 The Parade 129 St. John's Hill, SW11 1TD **T: 020 7924 5727 W: www.nysawine.co.uk** **SHOP STORIES**

Philglass & Swiggot 21 Northcote Road, SW11 1NG **T: 020 7924 4494 W: www.philglas-swiggot.com**

Sambrook's Brewery Unit 1 & 2 Yelverton Road, SW11 3QG **T: 020 7228 0598 W: www.sambrooksbrewery.co.uk**

Women's clothing, Jewellery, Lingerie, Hats, Bags, Shoes

Amelies Follies 34 Webb's Road, SW11 6SF **T: 020 7924 3826 W: www.ameliesfollies.co.uk**

Asquiths of London 88 Northcote Road, SW11 6QN **T: 020 7223 6473 W: www.asquithsoflondon.co.uk**

Edwina Ibbotson 45 Queenstown Road, SW8 3RG **T: 020 7498 5390 W: www.edwinaibbotson.co.uk**

Find of London 228 Battersea Park Road, SW11 4ND **T: 020 7720 2234 W: www.findoflondon.com**

Gabriela Sandham 161 Lavender Hill, SW11 5QH **T: 020 7223 5558 W: www.gabriellasandham.com**

Helen's Boutique 155 Northcote Road, SW11 6QB

Jessica Mary Millinery 134 St John's Hill, SW11 1SL **W: www.jessicamarydesign.co.uk**

Made the Edit 79 Northcote Road, SW11 6PJ **W: www.madetheedit.com**

The Northcote Jeweller 57 Northcote Road, SW11 1NP **T: 020 3859 7310 W: www.thenorthcotejeweller.com**

W & W Jewellery 19 Webbs Road, SW11 6RU **T: 020 7924 2386 W: www.wandwjewellery.com**





EARLSFIELD

Art galleries, Pottery

Atkinsons Kram Gallery 302 Garratt Lane, SW18 4BA

La Galleria 298 Garratt Lane, SW18 4EH **T: 020 8874 9838 W: www.lagallerialondon.co.uk**

MiniPotter 430 Garratt Lane, SW18 4HN **T: 020 8944 7466 W: www.minipotters.co.uk**

Balloons

The Balloon & Kite Company 613 Garratt Lane, SW18 4SU **T: 020 8946 5962 W: www.balloonshop.com**

Bespoke cakes

Ya Ya Cakes 725-727 Garratt Lane, SW17 0PD **T: 020 3489 6050 W: www.yayacakes.com**

Bridalwear, Wedding dresses

A Neat Touch Studio 621 Garratt Lane, SW18 4SX **T: 020 8944 2001 W: www.aneattouchstudio.co.uk**

Building supplies, Doors, DIY, Windows and Glass

B&B Plumbing & Heating Supplies 641 Garratt Lane, SW18 4SX **T: 020 8946 2957**

Earlsfield Power Tools 533 Garratt Lane, SW18 4SR **T: 020 8879 0070**

Juno Glass 46-50 Lydden Road, SW18 4LR **T: 020 8870 9293 W: www.junoglass.co.uk**

London Glass Works 547 Garratt Lane, SW18 4SR **T: 020 8879 7060**

Butcher

Dugard & Daughters Butcher Larder 507 Garratt Lane, SW18 4SW

T: 020 8871 1230 W: www.dugardanddaughters.com

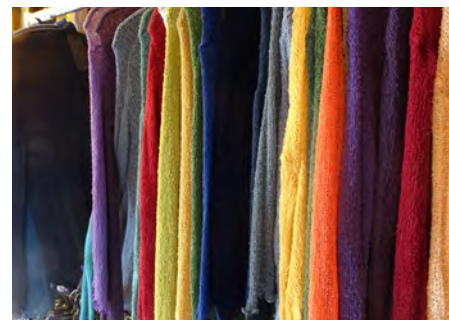
Car audio

Car Audio Centre 835 Garratt Lane, SW17 0PG **T: 020 8971 9181 W: www.caraudiocentre.co.uk**

Clothing Men & Women

331 331 Garratt Lane, SW18 4DX **T: 020 8870 6638**

Catwalk Encore 381 Garratt Lane, SW18 4DY **T: 020 3774 1120 W: www.catwalkencore.com**





EARLSFIELD

Dog grooming

PawPairs 524 Garratt Lane, SW17 0NY **T: 07572 804138 W: www.pawpairs.co.uk**

Florists

Blume 396 Garratt Lane, SW18 4HP **T: 020 3441 6050 W: www.blumestudio.co.uk**

Gardens, Landscapers, Garden equipment, Artificial grass

Blue Team Landscape & Garden 30-34 Groton Road, SW18 4EP **T: 07789 186610 W: www.2blueteam.co.uk**

Gifts

Lark 382 Garratt Lane, SW18 4HP **T: 020 8946 5556 W: www.larklondon.com**

Groceries, Delicatessen

Kruger's Deli 547 Garratt Lane, SW18 4SR **T: 020 8946 6951 W: www.southafricanshop.co.uk**

Siopa na Gael 830 Garratt Lane, SW17 0NA **T: 020 8767 9942**

The Thai Grocer 361 Garratt Lane, SW18 4DY **T: 020 8870 8856 W: www.www.thai-grocer.com** SHOP STORIES

Home furnishings, Floor coverings, Curtains and Blinds, Lighting

Dirty Blinds 8 Thornsett Road, SW18 4EN **T: 020 8870 9960 W: www.dirtyblinds.co.uk**

Field House London 627 Garratt Lane, SW18 4SX **T: 020 8944 1008 W: www.victoriasmeeinteriors.co.uk**

Floor Plan Earlsfield 322-324 Garratt Lane, SW18 4EJ **T: 020 8870 9710 W: www.floorplanearlsfield.com**

Furniture City 534 Garratt Lane, SW17 0NY **T: 020 8879 3999 W: www.furniturecity.co.uk**

Mr Resistor Lighting Specialists 21 Lydden Road, SW18 4LT **T: 020 8874 2234 W: www.mr-resistor.co.uk**

The Shop 645/649 Garratt Lane, SW17 0PB **T: 020 8944 7801**

Kitchens, Interiors

Gardiner & Co Furniture Makers & Cabinet Makers 480 Garratt Lane, SW18 4HJ

T: 020 8947 4921 W: www.gedgardiner.com

Kitchen Connections 428 Garratt Lane, SW18 4HN **T: 020 8947 6180 W: www.kitchenconnections.co.uk**

Laptop PC repairs & printers

Asmaar Traders 213A Garratt Lane, SW18 4DS **T: 020 8871 9777**

Lawn mower repairs

Austin Mower Repairs 300 Garratt Lane, SW18 4EW **T: 020 8874 4206 W: www.austin-mowers.co.uk**

Mobile phone repairs

11 Technologies 182 Garratt Lane, SW18 4ED **T: 020 8870 7111 W: www.11technologies.business.site**

Plaster coving

The Classic Cornice Co 176 Garratt Lane, SW18 4ED **T: 020 8874 0221 W: www.classiccornice.co.uk**

Professional supplies

Chase Metal Ltd 444 Garratt Lane, SW18 4HN **T: 020 8947 0416 W: www.chasemetal.co.uk**

Security

Banham Security 20 Thornsett Road, SW18 4EF **T: 020 7622 5151 W: www.banham.co.uk**

Tattoo

Barry Louvaine's Tattoo Studio 412 Garratt Lane, SW18 4HW **T: 020 8946 6840 W: www.barrylouvaine.com**

Vibrant Inks Tattoo Ltd 314 Garratt Lane, SW18 4EH **T: 020 8875 1330 W: www.vibrant-ink-tattoos**

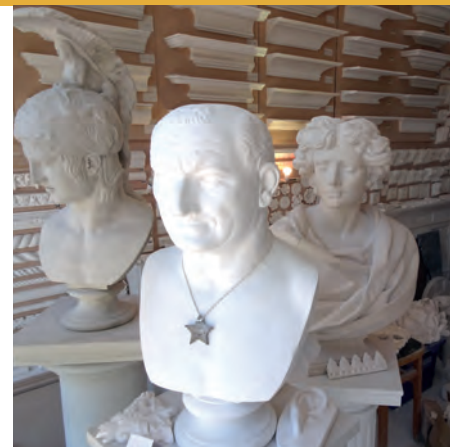
Vapes and E Cigarettes

Vape Dreaming E Cig Shop 191 Garratt Lane, SW18 4DR **T: 020 3659 1173 W: www.vapedreaming.co.uk**

Travel

Marsons Travel Ltd 633 Garratt Lane, SW18 4SX **T: 020 8944 9145**

7 Seas Holidays Ltd 199 Garratt Lane, SW18 4DR **T: 020 3968 0900 W: www.7seasholidays.co.uk**



FURZEDOWN



Art Gallery

Sprout Arts 74 Moyser Road, SW16 6SQ **T: 020 8769 0996 W: www.sproutarts.com**

Building supplies, Plastering, DIY

Skyfoot DIY & General Store 115 Mitcham Lane, SW16 6LY **T: 020 8835 0260**

Plastering Art 93 Mitcham Lane, SW16 6LY **T: 07949 139835 W: www.plasteringart.co.uk**

Fishmongers

Life of Fish 84 Moyser Road, SW16 6SQ **T: 07539 566 611 W: www.lifeof.fish** SHOP STORIES

Florists

Clarks Florist 72 Moyser Road, SW16 6SQ **T: 020 8677 0593**

Home Furnishings, Upholstery, Furniture restoration

E & A Wates Ltd 82-84 Mitcham Lane, SW16 6NR **T: 020 8769 2205 W: www.eawates.com**

Motor spares

Nicholls Motor Spares 92 Mitcham Lane, SW16 6NR **T: 020 8677 2730**

Pet products and Dog grooming

Furzy Paws 95-97 Moyser Road, SW16 6SJ **T: 020 8617 9880 W: www.furzypaws.com** SHOP STORIES

Ronpet 112 Mitcham Lane, SW16 6NR **T: 020 8769 6532**

Tattoos

Skyful Tattoo 108 Mitcham Lane, SW16 6NR **T: 020 7998 0669**





PUTNEY

Antiques,

Antiques 31 Lower Richmond Road, SW15 1ER **T: 07956 393653**

Art galleries

The Political Cartoon Gallery & Café 16 Lower Richmond Road, SW15 1JP

T: 020 8789 0111 W: www.original-political-cartoon.com

The Russell Gallery 12 Lower Richmond Road, SW15 1JP **T: 020 8780 5228 W: www.russell-gallery.com**

Upstart 161 Lower Richmond Road, SW15 1HH **T: 020 8785 6543**

Building supplies, Doors, DIY, Windows and Glass

Bespoke Windows London 62 Lower Richmond Road, SW15 1JT **T: 020 3302 1441 W: www.bwlltd.co.uk**

PBM Builders Merchants 90-92 Upper Richmond Road, SW15 2SU

T: 020 8785 4321 W: www.putneybuildersmerchants.com

Putney Hardware 290 Upper Richmond Road, SW15 6TH **T: 020 8789 3102**

NPH Plumbing Heating Supplies 271 Putney Bridge Road, SW15 2PT

T: 020 8789 7539 W: www.nphplumbingandheating.co.uk

Butchers

Parsons Nose 88 Lower Richmond Road, SW15 1LL **T: 020 8788 6160 W: www.parsonsnose.co.uk**

Snoggy's South African Butcher 367 Upper Richmond Road, SW15 5QJ **T: 020 8876 2050 W: www.snoggys.com**

Children's clothing

Ben and Lola Putney Exchange, SW15 1TW **W: www.benandlola.com**

Childrens Play and entertainment

Hooray London 72 Lower Richmond Road, SW15 1LL **T: 020 7183 8837 W: www.hoorayentertainment.com**

Clocks

The Clock Clinic 85 Lower Richmond Road, SW15 1EU **T: 020 8788 1407 W: www.clockclinic.co.uk**

Comics

30th Century Comics 18 Lower Richmond Road, SW15 1JP **T:** 020 8788 2052 **W:** www.30thcenturycomics.co.uk

Cycle Shop, Cycle maintenance

Elswood Cycleworks 98 Lower Richmond Road, SW15 1LN **T:** 020 8789 9837 **W:** www.elswoodcycleworks.com

Velosport 252 Upper Richmond Road, SW15 6TQ **T:** 020 8780 1978 **W:** www.velosport.uk

Tailors

San Tailors 222 Upper Richmond Road, SW15 6DD **T:** 020 8788 7001 **W:** www.santailors.co.uk

Electrical installations

Melvins Electrical Contractors 275 Putney Bridge Road, SW15 2PT **T:** 020 8788 4354 **W:** www.dvmelvin.com

Floor coverings

A H Peck Flooring Contractors Ltd 141 Lower Richmond Road, SW15 1EZ **T:** 020 8788 1795 **W:** www.ahpeckltd.co.uk

Mr Carpet 70 Lower Richmond Road, SW15 1LL **T:** 020 8789 3133 **W:** www.mr-carpet.co.uk

B & R Carpet Co 300-302 Upper Richmond Road, SW15 6TH **T:** 020 8785 4466 **W:** www.bandrcarpet.co.uk

The Tile Studio 135A Lower Richmond Road, SW15 1EZ **T:** 020 8788 5900 **W:** www.wallsandfloors.co.uk

Florists

Dovers Flowers 165 Putney High Street, SW15 1RT **T:** 020 8780 3558 **W:** www.doversflowers.com

Flowers 24 next to East Putney tube stn Upper Richmond Road, SW15 **T:** 020 3489 6161 **W:** www.flowers24hours.co.uk

Ginger 291 Upper Richmond Road, Putney, SW15 6SP **T:** 020 8785 1118 **W:** www.gingerflorist.com

Gardens

Easigrass (Artificial Grass) 117 Lower Richmond Road, SW15 1EX **T:** 0330 400 4498 **W:** www.easigrass.com

The Botanical Gardener 159 Lower Richmond Road, SW15 1HH **T:** 020 8704 1193 **W:** www.thebotanicalgardener.co.uk





PUTNEY

Gifts, Lifestyle, Pottery

Aigoo Unit 16, Putney Exchange SW15 1TW **W:** www.aigoo.co.uk **SHOP STORIES**

Blabar 3A Lacey Road, SW15 1NH **T:** 020 8780 2723 **W:** www.blabar.london

Farrago Unit 21, Putney Exchange, SW15 1TW **T:** 020 8788 0162 **W:** www.putneyexchange.co.uk

Huttons Unit 3, Putney Exchange, SW15 1TW **T:** 020 8785 0181 **W:** www.huttonsdirect.com

Pitter Potter 234 Upper Richmond Road, SW15 6TG **T:** 020 8788 1635 **W:** www.pitterpotter.co.uk

Groceries

Delicja 379 Upper Richmond Road, SW15 5QL **T:** 07825 250389

Lemon & Limes Grocers 167 Putney High Street, SW15 1RT **T:** 020 8704 5430

Polski Sklep 201 Upper Richmond Road, SW15 6SG **T:** 020 8785 0961

Haberdashery

The Sewing rooms 14 Lacy Road, SW15 1NL **T:** 020 8780 0126 **W:** www.thesewingrooms.com

Health and Wellbeing, Beauty,

Panacea Health & Beauty Unit 15A, Putney Exchange, SW15 1TW

T: 020 8780 2683 **W:** www.panaceaonline.co.uk

Home furnishings, Upholstery

H J Cooper 262-264 Upper Richmond Road, SW15 6TQ **T:** 020 8788 8673 **W:** www.hjcooper.com

Riverside Upholstery 24 Lower Richmond Road, SW15 1JP **T:** 020 8789 2547 **W:** www.riversideupholstery.co.uk

Kitchens, Bathrooms, Interiors

Casa Nora 324 Upper Richmond Road SW15 6TL **T:** 020 3538 4600 **W:** www.casanora.uk

Interior Design Concepts 104-106 Upper Richmond Road, SW15 2SP **T:** 020 8780 3611 **W:** www.idc-putney.com

Kallums Bathrooms 100-102 Lower Richmond Road, Putney, SW15 1LN

T: 020 3620 2076 **W:** www.kallumbathrooms.co.uk

Kitchen Architecture 143-149 Lower Richmond Road, SW15 1EZ **T:** 020 8785 1960 **W:** www.kitchenarchitecture.co.uk

Men's Clothing

Morrows Corner Unit 18, Putney Exchange, Putney High Street/Lacy Road, SW15 1TW

T: 020 3409 4399 **W:** www.morrowsoutfitters.com

Music, Records & CD's

Soul Brother Records 1 Keswick Road, SW15 2HL **T:** 020 8875 1018 **W:** www.soulbrother.com **SHOP STORIES**

Windsor Music School 269 Putney Bridge Road, SW15 2PT **T:** 020 8785 7196 **W:** www.windsormusicschool.org.uk

PC & Apple MAC repairs

Digimac Limited 258 Upper Richmond Road, SW15 6TQ **T:** 020 8788 9595 **W:** www.digimacputney.co.uk

Gadget x Vape 172 Putney High Street, SW15 1RS **T:** 07445 096875

PC Magicians 66 Lower Richmond Road, SW15 1LL **T:** 020 7610 0500 **W:** www.pcmagicians.co.uk

Putney Tech 199 Upper Richmond Road, SW15 6SG **T:** 020 8246 6849 **W:** www.putney-tech.co.uk

Pets, Pet care

City Paws Club 42 Lower Richmond Road, SW15 1JP **T:** 020 7164 6126 **W:** www.citypawsclub.co.uk

Master's Touch 137 Putney Bridge Road, SW15 2PA **T:** 020 8877 0521 **W:** www.masterstouch.uk

Mucky Pups 391 Upper Richmond Road, SW15 5QL **T:** 020 8392 2977

Print

Putney Design & Print 44 Lower Richmond Road, SW15 1JP **T:** 020 8912 0880 **W:** www.putneyprinting.com

Shoes, Shoe repairs, Key cutting

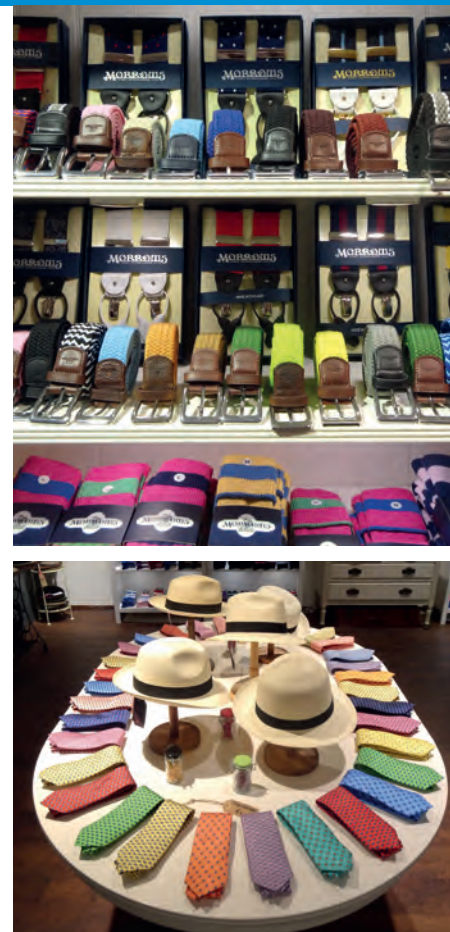
Cobblers of Putney 153A Upper Richmond Road, SW15 2TX **T:** 020 8780 2331

J Poole & Son 230A Upper Richmond Road, SW15 6TG **T:** 020 8785 9233

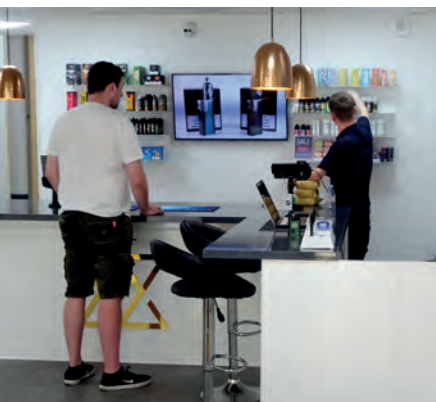
Riverside Cobbler 36 Lower Richmond Road, SW15 1JP **T:** 020 8788 5564

J Rogers & Sons Putney Exchange, SW15 1SE **T:** 020 8780 2088 **W:** www.shoerepairs london.co.uk

Savini Shoes 216 Upper Richmond Road, SW15 6TD **T:** 020 8789 2565 **W:** www.savinishoes.com



PUTNEY



Sportswear

Sporting Feet 3 Lacy Road SW15 1NH **T:** 020 8780 0558 **W:** www.sporting-feet.com **SHOP STORIES**

Travel

Powder Byrne 250 Upper Richmond Road, SW15 6TG **T:** 020 8246 5300 **W:** www.powderbyrne.com

Tyres

Wadham Tyres 150 Putney Bridge Road, SW15 2NG **T:** 020 8870 9080 **W:** www.wadhamtyresandgarage.co.uk

Wine, Craft beer

Artisan & Vine of Putney 195-197 Lower Richmond Road, SW15 1HJ **T:** 020 8789 1211 **W:** www.artisanandvine.co.uk

Ghost Whale Ltd 134 Upper Richmond Road, SW15 2SP **T:** 020 8780 3168 **W:** www.ghostwhalelondon.com

Glug 242 Upper Richmond Road, SW15 6TG **T:** 07887 953165 **W:** www.glugwines.co.uk

The Sampler 161-163 Putney High St, SW15 1RT **T:** 020 3935 1047

Trina's Wines 385 Upper Richmond Road, SW15 5QJ **T:** 020 8876 3576 **W:** www.facebook.com/trinas.wines

Women's clothing, Wedding dresses

Adornments 209 Upper Richmond Road, SW15 6SQ **T:** 020 8788 3880 **W:** www.adornmentsputney.com

Jaki 142, Putney High St, SW15 1RR **T:** 020 8789 7301 **W:** www.positivelyputney.co.uk

Tantrums & Tiaras 46 Lower Richmond Road, SW15 1JP **T:** 020 8788 8118 **W:** www.putneyweddingdresses.co.uk

ROEHAMPTON

Butchers

Heanens 5-7 Petersfield Rise, SW15 4AE **T:** 020 8789 2585 **W:** www.heanens.com

Groceries, Delicatessen

Swojska Chatka (Polish Deli) 2A Medfield Street, SW15 4JZ **T:** 020 8265 6986

Hair & Beauty

Marjan Hair Salon 12A Roehampton High Street, SW15 4HJ

T: 020 8637 9023 **W:** www.marjanhairstudio.com **SHOP STORIES**

Opticians

Focalpoint Opticians 45 Danebury Avenue, SW15 4DQ **T:** 020 8780 3288 **W:** www.roehamptonopticians.com





SOUTHFIELDS

Antiques

Decorative Antiques & Vintage 43 Replingham Road, SW18 5LT **T:** 020 8875 9381

Bespoke cakes

Cakes by Robin Unit 34 Riverside Road, Station Business Centre, SW17 0BA **T:** 020 8874 4616 **W:** www.cakesbyrobin.co.uk

Building supplies, DIY

Bournes DIY shop 30 Replingham Road, SW18 5LR **T:** 020 8874 7517

Butchers

The Village Butchers 14 Replingham Road, SW18 5LS **T:** 020 8488 5106 **W:** www.sw18villagebutchers.com

Cycle Shop, Cycle maintenance

SW Bicycle Company 79 Replingham Road, SW18 5LU **T:** 020 8616 4049 **W:** www.swbicyclecompany.co.uk

Floor coverings

Hillside Carpets 32 Replingham Road, SW18 5LR **T:** 020 8877 9595

Florists

SW Blooms Florist 34 Replingham Road, SW18 5LR **T:** 020 8874 5559

Food, Delicatessen, Health & Nutrition

Earthien 235A Wimbledon Park Road, SW18 5RJ **T:** 020 8874 8048 **W:** www.earthianbms.com

Polski Sklep 237 Wimbledon Park Road, SW18 5RJ

Gifts

Chalk 41 Replingham Road, SW18 5LT **T:** 020 8870 6125 **W:** www.chalkgifts.co.uk

Greengrocer**Freshers Village Fruiterers** 19 Replingham Road, SW18 5LT **T: 020 8874 4617****Locksmiths****Oakley Locksmiths** Ltd 81 Replingham Road, SW18 5LU **T: 020 8871 1238 W: www.oakleylocksmiths.co.uk****Opticians****Wheeler and Kirk** 15 Replingham Road, SW18 5LY **T: 020 8874 5511****Picture framing****Southfields Framery** 169 Replingham Road, SW18 5LT **T: 020 8870 8458****Printing****Yellow Printshop** 40 Replingham Road, SW18 5LR **T: 020 8875 0332 W: www.yellowprint.co.uk****Shoe repairs****The Village Cobbler** 28 Replingham Road, SW18 5LR **T: 020 3769 3426****Sports****PWP Sport - ultimate racket specialists** 260 Wimbledon Park Road, SW19 6NW **T: 020 8780 3062****Women's hats****Emily of London** 195 Replingham Road, SW18 5LY **T: 020 8870 6506 W: www.emily-london.com** **SHOP STORIES**



TOOTING

Baby

Wear my baby 58 Upper Tooting Road, SW17 7PB **W:** www.wearmybaby.co.uk

Building supplies, DIY, Glass, Masonary

Ace Mica Hardware Ltd 174 Mitcham Road, SW17 9NJ

T: 020 8672 2596 **W:** www.acementhardware.co.uk

GDC Paints 134-142 Tooting High Street, SW17 0RU **T:** 020 8672 2231 **W:** www.gdcpaints.com

The Glass Shop 225 Mitcham Road SW17 9JG **T:** 020 8672 3321 **W:** www.amencornerglass.co.uk

Russell's Trade & DIY 46 Upper Tooting Road, SW17 7PD **T:** 020 8672 1576

Butchers

Tariq Halal 147 Upper Tooting Road, SW17 7TJ **T:** 020 8767 9113 **W:** www.tariqhalalmeats.com

Car parts

Superspares 267-269 Balham High Road, SW17 7BD **T:** 020 8672 6666

Cycle Shop, Cycle maintenance

Goku Cycles 332 Balham High Road, SW17 7AA **T:** 020 8014 5999 **W:** www.gokucycles.co.uk

Crazy horse bike workshop 275 Balham High Road, SW17 7BD

T: 020 8767 5614 **W:** www.crazyhorsebikeworkshop.co.uk

Dog Grooming

D-O-G Grooming Studio 204 Trinity Road, SW17 7HP **T:** 020 8767 5616 **W:** www.doggroomingstudio.net

Electrical Appliances, Audio visual

Microtronics Centre 117 Mitcham Road, SW17 9PE **T:** 020 8772 4782 **W:** www.microtronicscentre.co.uk

Engraving

Broadway 2 Bank Chambers, Tooting High Street, SW17 0SU **T:** 020 8682 0618 **W:** www.broadway-engraving.co.uk

Fabric, Haberdashery, Sewing, Sewing machines and crafts

Guru Kirpa Fabrics 12 Tooting High Street, SW17 0RG **T:** 020 8767 9504

Nadim Fabrics 165 Upper Tooting Road, SW17 7TJ **T: 020 8001 9225**

Tooting Fabric African, Asian and Arabic fabrics 203 Upper Tooting Road, SW17 7TG

Wimbledon Sewing Machine Co 292-312 Balham High Road, SW17 7RF **T: 020 8767 4724 W: www.craftysewer.com**

Floor coverings

Ideal Carpets & Flooring 328 Balham High Road, SW17 7AA **T: 07984 358398 W: www.idealcarpetandflooring.co.uk**

PWC International Ltd 162A Mitcham Road, SW17 9NJ **T: 020 8672 4344**

Ideal Carpets 328 Balham High Road, SW17 7AA **T: 020 8772 4786 W: www.idealcarpetandflooring.co.uk**

Florists

Doris Florist 969 Garratt Lane, SW17 0LW **T: 020 8672 3571 W: www.dorisflorist.co.uk**

Petals of Balham the flower stall outside Tooting Broadway Tube Station **T: 07730 350360**

Gifts, Greetings cards

Lark 112 Mitcham Road, SW17 9NG **T: 020 3638 1351 W: www.larklondon.com**

Groceries, Asian, Deli, Indian sweets & savouries

Ambala 201 Upper Tooting Road, SW17 7TG **T: 020 8672 4867 W: www.ambalafoods.com**

Bhavin's 193-197 Upper Tooting Road, SW17 7TG **T: 020 8672 7531**

Balkanika 115 Mitcham Road, SW17 9PE **T: 020 8617 9020**

Istanbul Food Gate Turkish Grocery 93 Mitcham Road, SW17 9PD **T: 020 8672 3444** **SHOP STORIES**

Maciek Deli Polish Grocery 97 Mitcham Road, SW17 9PD **T: 07780 056340**

Nirala 172-174 Upper Tooting Road, SW17 7ER **T: 020 8672 4488 W: www.niralafoods.moonfruit.com**

Patel Brothers 187-189 Upper Tooting Road, SW17 7TG **T: 020 8672 2792 W: www.asiandukan.co.uk**

Pooja Sweets & Savouries Ltd 168-170 Upper Tooting Road, SW17 7ER **T: 020 8672 4523 W: www.poojasweets.com**

Hair and Beauty, Cosmetics

Afrocadabra 45 Mitcham Road, SW17 9PB **T: 020 8767 2546**

Sabina 69 Mitcham Road, SW17 9PB **T: 020 8682 0055**





TOOTING

Health and Wellbeing

The Health Store 246 Upper Tooting Road, SW17 7EX **T: 020 8672 5417**

Islamic books

Lebas 236 Upper Tooting Road, SW17 7EX **T: 020 8767 7880**

Jewellery, Asian Jewellery

De Pala Jewellers 227 Upper Tooting Road, SW17 7TG **T: 020 8767 4674**

Minar Jewellers 181 Upper Tooting Road, SW17 7TG **T: 020 8767 2142 W: www.minarjewellers.com**

Palasons Jewellers 199 Upper Tooting Road, SW17 7TG **T: 020 8682 3796**

Pravin A Pattni 207 Upper Tooting Road, SW17 7TG **T: 020 8682 3796**

Locksmith, Security

Saxon Security Locks 208D Mitcham Road, SW17 9NN **T: 020 8767 6281 W: www.saxonlocks.co.uk**

Luggage

Taborn's Luggage Ltd 171 Upper Tooting Road, SW17 7TJ **T: 020 8672 3675 W: www.tabornsluggage.co.uk**

Mens Clothing

Fashion Plus 205 Upper Tooting Road, SW17 7TG **T: 020 8672 0095 W: www.fashionplus.bigcartel.com**

Scanito Jeans 72 Mitcham Road, SW17 9NA **T: 020 8767 5196**

Opticians

Wheeler and Kirk 8 Tooting High Street, SW17 0RG **T: 020 8672 7060**

Printing, Stationery

K&K Stationers & Printers Ltd 94 Mitcham Road, SW17 9NG **T: 020 8767 5149**

Printique 336 Balham High Road, SW17 7AA **T: 020 8767 0095**

The Printing Place 1 Selkirk Road, SW17 0ND **T: 020 8767 6827 W: www.theprintingplace.co.uk** SHOP STORIES

Shoes, Shoe repairs

Dunnes 2 Bank Chambers, Tooting High Street, SW17 0SU **T: 020 8682 0618**

Kostantino 120 Mitcham Road, SW17 9NH **T: 020 8672 0306**

Tailor

Robert's Bespoke Tailoring 10 Selkirk Road, SW17 0ES **T: 020 8672 6294 W: www.robertsbespoketailoring.com**

Travel

Club Caribbee Caribbean travel agency 270 Upper Tooting Road, SW17 0DP
T: 020 8682 1115 W: www.clubcaribbee.co.uk

Video gaming

Crazy Thumbs 100 Mitcham Road, SW17 9NG **T: 020 3305 5729**

Women's clothing

Aradhana 211 Upper Tooting Road, SW17 7TG **T: 020 8767 7696 W: www.aradhanaheritage.com**

Geeta Sarees 231 Upper Tooting Road, SW17 7TG **T: 020 8672 0208**

Hali H 235 Upper Tooting Road, SW17 7TG **T: 020 8767 3848 W: www.halih.com**

KNG Designs 244 Upper Tooting Road, SW17 7EX **T: 020 8696 1157**

Lal Kurti 260 Upper Tooting Road, SW17 0DN **T: 020 8682 2838 W: www.lal-kurti.com**

Prachy Creations 101-103 Upper Tooting Road, SW17 7TW **T: 020 8682 2500 W: www.prachy.co.uk**

Rani Fashions 262B Gatton Road, SW17 0DN **T: 0750 754 9004 W: www.ranifashions.co.uk**

Tarz 237 Upper Tooting Road, SW17 7TG

Top Notch 22 Tooting High Street, SW17 0RH

Zoya 240 Upper Tooting Road, SW17 7EX **W: www.zoyaboutique.com** **SHOP STORIES**

Markets - See page 39

Tooting Market

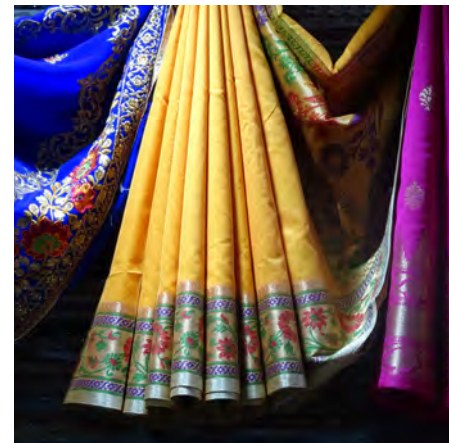
21-23 Tooting High Street, SW17 0SN **T: 020 8672 4760 W: www.tootingmarket.com**

Comics, gaming, vinyl records, glass & beads, gifts, clothing alterations & repairs, gin, craft beer, wine and more

Broadway Market

29 Tooting High Street, SW17 0RJ **T: 020 8672 6613 W: www.bmtooting.co.uk**

Cycle repairs, pet shop accessories, watch & clock specialist, leather & lace, craft beer, cider and more





WANDSWORTH

Building, DIY, Loft Conversions, Plastering

Davies Period Plaster Mouldings Ltd 4 West Hill, SW18 1SB **T: 020 8871 9399 W: www.daviesplastering.co.uk**

Butchers

Cleavers 362 Old York Road, SW18 1SP **T: 020 8871 0775**

Franklands Family Butchers 173 Merton Road, SW18 5EF **T: 020 8874 7732**

Cars

Chelsea Cars 59-61 Armoury Way, SW18 1JZ **T: 020 8870 9977 W: www.chelseacars.com**

Joe Macari 249 - 251 Merton Road, SW18 5EB **T: 020 8870 9007 W: www.joemacari.com**

Computers, Computer repair, Mobile phones

Computers Inc 59 East Hill, SW18 2QE **T: 020 7099 4577 W: www.computersinc.co.uk**

Mobile Phone Laptop & Repair Centre 66 Wandsworth High Street, SW18 4LD **T: 020 8871 9260**

PC & Mac World Ltd 205 Wandsworth High Street, SW18 4JE **T: 020 3603 6460 W: www.pcandmacworld.co.uk**

Fone Junction 137 Wandsworth High Street, SW18 4JB **T: 020 8871 1010**

FSE Ltd 187 Wandsworth High Street, SW18 4JE **T: 020 8875 9154 W: www.fsecomputerworld.com**

Cycle Shop, Cycle maintenance

Stratton Cycles 101 East Hill, SW18 2QB **T: 020 8874 1381 W: www.strattoncycles.com**

Floor coverings

Carpet Man 7A Putney Bridge Road, SW18 1HX **T: 020 8875 0232 W: www.carpetman.com**

Marlows Carpets 67 East Hill, SW18 2QE **T: 020 8871 1169 W: www.marlowscarpets.com**

Florists

Bramble & Willow 545a Old York Road, SW18 1TQ **T: 07540 329098 W: www.brambleandwillow.com**

Hardware merchants & ironmongers

Belton & Slade 84 Wandsworth High Street, SW18 4LB

T: 020 8871 1000 W: www.toolbankexpress.com/shop/beltonandslade

Interiors

Salvesen Graham 364 Old York Road, SW18 1SP **T: 020 7967 7777 W: www.salvesengraham.com**

Ladies fashions

Anthology 511 Old York Road, SW18 1TF

Picture framing

Chris Everett Framing 8 Huguenot Place, SW18 2EN **T: 020 8874 9138 W: www.chriseverettframing.co.uk**

Tailors

SNS Tailors 96 East Hill, SW18 2HF **T: 020 3524 2560**

W G Child & Sons 106-108 Wandsworth High Street, SW18 4LA **T: 020 8870 3895 W: www.childandsons.co.uk**

Tyres, Vehicle repair

Top Notch Tyres 126-128 Wandsworth High Street, SW18 4JP **T: 020 3719 4338 W: www.topnotchtyres.co.uk**

Window framing

London Windows & Joinery 63 East Hill, SW18 2QE **T: 020 8874 3122 W: www.londonwindowsandjoinery.com**





WANDSWORTH COMMON

Art gallery

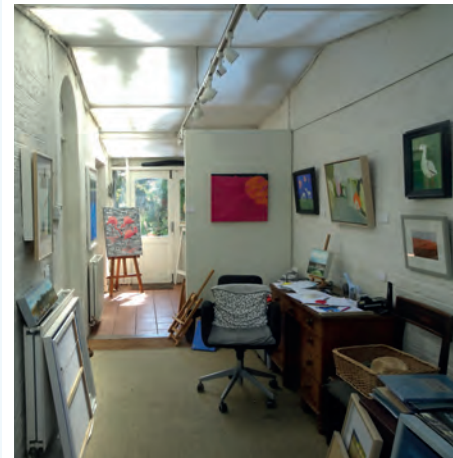
Oliver Contemporary 17 Bellevue Road, SW17 7EG **T:** 020 8767 8822 **W:** www.olivercontemporary.co.uk

Bicycle Repairs

Bellevue Bicycle Repair Workshop 1 Bellevue Road, SW17 7EG **W:** www.bellevuebicycleworkshop.com

Ladies shoes and Fashions

Olivier's Lounge 1 Bellevue Parade, SW17 7EQ **T:** 020 8767 7294 **W:** www.olivierslounge.co.uk



LOCAL MARKETS

Northcote Road Market

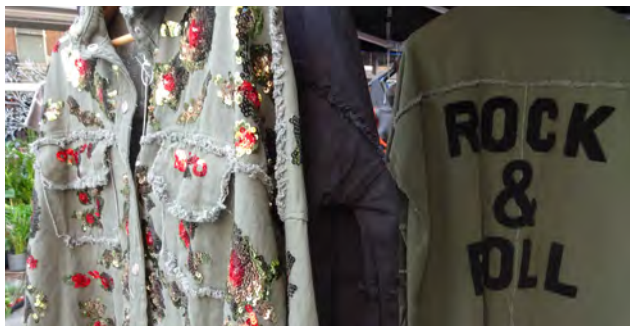
Mostly Friday and Saturday.

Northcote Road market dates back to the 1860's and used to be a local fruit and vegetable market. This is the largest of the outdoor street market areas in Wandsworth and has an extensive variety of goods such as fruit & veg, an excellent fish stall, bread, fresh pizza, olives, flowers and plants, clothing and jewellery.

Hildreth Street Market

Small Daily Market with more stalls on Saturday

According to author Graham McCann in his book *Only Fools and Horses: The Story of Britain's Favourite Comedy*, the show's writer John Sullivan once worked in Hildreth Street Market. The market is home to Pawel - The Fruit and Veg Stall, Lisa - the ladieswear retailer, and of course, Emma and Alan from Chris Tucker's *Petals of Balham* stall who have traded on the street for decades.



Battersea High Street Market

Saturdays

This market has been in existence since the 1890's. It shrunk over the years, but there are still some very popular local traders on a Saturday, including a fruit & veg stall and a general trader.

Covent Garden Market

Flower Market

Monday to Friday 04:00 - 10:00 / 12:00* Saturday 04:00 - 10:00

*Most wholesalers close at 10:00 but some, mainly our sundries and plant wholesalers, are open till later.

Fruit and Veg Market

Monday to Saturday 00:00 - 06:00

Some wholesalers may vary, please check individual opening hours
This Battersea landmark was opened by the Queen in November 1974 (moving from the actual Covent Garden in central London). It is the largest wholesale fruit, vegetable, and flower market in the United Kingdom with 175 companies trading on site. **W:** www.newcoventgardenmarket.com



Tooting Market established for over 80 years as South London's premier multiple award winning indoor market

Tooting Market

Sunday - Thursday: 8am-10pm Friday-Saturday: 8am-10pm

Tooting Market hosts a variety of tenants selling fresh foods, ladies and men's fashion, music, hair and nail salons, arts and crafts, furniture, a food court and hundreds of products to choose from so you'll be sure to find what you are looking for.

23-23 Tooting High Street SW17 0SN

T: 020 8672 4760 W: www.tootingmarket.com

Broadway Market

Monday 9am-6.30pm Tuesday-Saturday 9am-10pm (bars & restaurants are open until 10pm but shops close around 6.30pm)

Sunday 8am-5pm

Broadway Market in Tooting is one of London's oldest markets. With over 100 stalls selling food, drinks, groceries, clothes, electronics, homewares and so much more, you're sure to find everything you need under one roof.

29 Tooting High Street, London, SW17 0RJ

T: 020 8672 6613 W: www.bmtooting.co.uk



Broadway Market in Tooting - a truly eclectic and historical London market

SHOP STORIES



Psubliminal

17 Balham High Road, SW12 9AJ

The company set out to create a unique place for all things bike related. They've built their reputation on great service. Step inside and you'll discover road bikes, hybrids & a full range of accessories on two floors. If you're after a bike service in Balham – you'll find a fully kitted out workshop staffed by bike mechanics with 20+ years of experience. Whether you're new to bikes or a seasoned veteran, they're always happy to help. Say hi and have a chat about all things bike related! They've got a great write up in Time Out and work hard to ensure you and your bike are happy. As well as bikes, you'll also find official Microscooters & accessories for kids and adults.

Looking to bike to work? They're part of Cyclescheme, the most popular bike to work scheme in the U.K. They've helped employees from some of London's top companies so they can assist you as well.



The Wine Tasting Shop

18 Hildreth Street, SW12 9RQ

The Wine Tasting Shop is both a shop and bar specialising in top-quality wines by small producers, providing exceptional value for money. It offers a broad international range with 400 bottles available in-store, at least 20 of which are available by the glass, including organic and biodynamic wines, and its own label varieties.

Pick any bottle off the shelves to sip onsite for a flat corkage fee, or simply buy a bottle (or two) to enjoy at home.

The shop holds fun and informative themed wine tasting events weekly and also caters for private wine tastings, either onsite or at a venue of your choice.

To complement its own wine selection, the shop serves top-quality artisan cheese and charcuterie platters.

Balham Paint and Hardware

22 Bedford Hill, SW12 9RG

At Balham Paint and Hardware Store, we supply a wide range of DIY products and services to individuals and trades. We pride ourselves in the high standard service and quality products we provide to our customers.

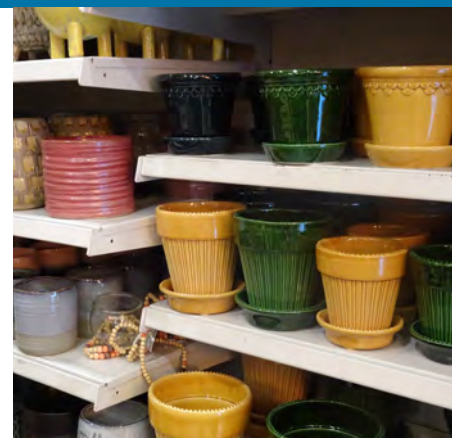
We are the main stockist in Balham for Little Greene paint company, Maylands Paints and All general hardware, ironmongery, door accessories, and DIY tools available in store. Door handles, knobs, hinges, letter plates and many more similar products. Paint library. Free help and advice. Paint mixer available in store. We offer a range of high quality lighting including Locomocean neon lighting and fixtures. Call us or pop in to our store for help & advice or buy online. A collection of clocks from known brands, including Newgate wall clocks, alarm clocks, come and browse the selection in store. All clocks are available to purchase from our buy online store.

Chalkboard

60 Northcote Road, SW11 1PA

Hi, we are Chris and Giovanna and Chalkboard is our family-run educational toy shop on Northcote Road. We are a little different to other toy shops as we like our products to have an educational twist - to sneak in the learning! We have everything from construction kits and logic puzzles, family games to English and maths aids, crafts and science experiments, to name a few! Our products range from birth to adult too, so there is something for everyone.

We pride ourselves on knowing how all our products work so we can offer personalised recommendations. We want our customers to leave loving what they have bought. We have most of the toys and games out so you can try before you buy - it's very much a hands-on shopping experience in our store! Pop in to have a play.



SHOP STORIES



The Painthouse

52 Northcote Road, SW11 1PA

The Painthouse is located on the busy Northcote Road in Battersea. Starting life as a specialist paint shop in the 1990's, The Painthouse has established itself as a fundamental part of the community. With over twenty years' experience and knowledge, the friendly team at the Painthouse can help you with all your interior design needs. From designer paints and wallpapers to beautifully curated home accessories, there is something for all tastes and styles.

The Painthouse has a comprehensive fabric library and offer five brands of designer paints. Their services also include bespoke curtain and blind making, upholstery and home styling services. A unique experience in a digital age.

Nysa Wine and Spirits

7 The Parade, 129 St John's Hill SW11

Nysa Wine and Spirits is a boutique wine shop where we pride ourselves on our knowledge and friendly customer service.

We work everyday to keep our selection interesting, exciting and customer focused. We also offer a wide selection of beers, cider and spirits from a broad range of countries. As we have a focus on small family run producers and estates there is a strong showing for organic, biodynamic, vegan and minimal intervention wines. Our prices start at £9.50 for wine so we like to think there is something for almost everyone. As well as having our tasting table available for you to taste some of our delicious wines always on sample we have just launched our wine club where you can tell us what you like and dislike and we organise and tailor your wines to be delivered. We are delighted to be open on St. John's Hill adding to the independent businesses already here.

Windfall Natural

92 Northcote Road, SW11 6QN

Established in Chiswick in 1997, Windfall Natural has been committed to serving the community with premium products and advice from fully trained nutritional therapists for over 20 years. Opening our second store on the Northcote Road in January 2020 allows us to share our passion, knowledge and enthusiasm for healthy living with the local residents and the wider community in the Clapham Junction area. Stocking specialist supplements, skin care, eco living and food, we are proud to be able to offer top quality products with free advice to everyone seeking to maximise their health and wellbeing.



Russell Motors

125-127 Falcon Road, SW11 2PE

Russell Motors is a family business established over 50 years ago. Started by Bill Myers after finishing in service with the RAF in 1945, he specialised in ex war department spares buying from military auctions, and supplying customers and dealers in England and the rest of the world from our shop in Battersea.

As the years went by and the British bike industry declined, Bill was out buying up other dealers stock as fast as they closed, such as Harold Daniels, Pride and Clarke, Elite Motors, Taylor Matterson and many others.

Bill is taking it easy now and has left the running to sons Les and Geoff and gradsons Mike and John.

In addition to the classic bike side of the business, we also cater for modern bikes with a busy workshop supplying and fitting a wide range of parts such as tyres, brake pads, chains and sprockets, MOT testing and much more.



Biscuiteers

13 Northcote Road, SW11 1NG

Harriet Hastings founded Biscuiteers in 2007 as an ecommerce site, with a mission to disrupt the gifting market with beautiful iced biscuits, delivered straight to the recipient's door.

Biscuiteers products are hand-iced at the Ministry of Biscuits, the brand's kitchens and HQ in South West London. The Britishness, and specifically London feel of the brand and the care that goes into each design has always been at the centre of everything Biscuiteers does.

The Northcote Road shop and café opened in 2014, Biscuiteers also has a second location in London's Notting Hill. The Biscuiteers stores are based on a unique concept - 'icing cafes' - offering icing experiences at the School of Icing. These include DIY Icing, Icing Lates (an evening icing class accompanied by prosecco) and parties and events for both adults and children.

In addition to the icing experiences and selection of hand-iced biscuits available at the Northcote Road boutique, you can take advantage of the café space where drinks, biscuits and delicious patisserie cakes are served. Whole patisserie cakes are also available to buy, perfect for special occasions, even better you can commission bespoke biscuits and cake designs.



SHOP STORIES



The Thai Grocer

361 Garratt Lane, SW18 4DY

We are a family owned Thai food specialist based in south west London with our own production facility in Bangkok Thailand. We supply the major Oriental distributors & wholesalers, independent food stores, contract caterers as well as the foodservice sector in the UK.

Our family have been involved in food production in Thailand since the turn of the last century. From modest beginnings in the heart of Bangkok's Chinatown way back in the 1950s, we now export our authentic recipe pastes, sauces and other cooking ingredients world-wide.

Despite the scale of our business, we still continue source fresh produce and ingredients from families of growers in northern Thailand with whom we have been dealing with for generations.

It is this sourcing approach - we call it 'natural selection' - that ensures the consistent high quality that characterises all our products.

Furzy Paws

95-97 Moyser Road, SW16 6SJ

Furzy Paws is a professional dog grooming and dog day care facility. All bookings can be made online or over the phone. The dog day care offers an all year round inside and outside environment for your pooch to enjoy. Furzy Paws has a 4 star day care facility rating which is the highest achievable rating for a new business. Very high quality grooms are provided by highly qualified and exceptionally skilled staff. The company also provides 4 week puppy training courses and individual puppy socialisation sessions.



Life of Fish

84 Moyser Road, SW16 6SQ

David started working at a wholesale fish company since he was a teenager, he then joined the amazing team at Fin & Flounder in East London.

A couple of years later, David left Fin & Flounder and became a manager in the bustling Selfridge's food hall. Managing the fish concession. Selfridge's was a whole different kettle of fish (sorry couldn't resist the pun) to Fin & Flounder, supplying fish to celebrities, private chefs and a more lavish customer type - doing demos for passing by customers and creating huge impressive fish displays which took hours to create.

Whilst at Selfridge's David started up his own street fish grill at Fuji Central Maltby Street market which is a hidden street of arches in the heart of Bermondsey / Borough market. He was there for six months which gave him a taster and an insight into what it would be like to own his own business. After seven years at Selfridge's, David was ready for something new and exciting but just didn't know what.

And then along came the Coronavirus pandemic.....

The UK was on lockdown. David hated the idea that people around him being stuck indoors without amazing food! His friend, baker and café owner Jimmy (Cut the Mustard in Furzedown) gave him the opportunity to create a mini fish stall outside of Jimmy's café. David was able to use his extensive list of suppliers and offer incredible fresh sustainable fish from the coast to the people of Furzedown! David had no idea how it was going to go, but just wanted to do something for the community and help people have amazing produce in a time of crisis. Little did he know there would be queues and that he would be sold out within a few hours. It was clear to see the people of Furzedown were hungry for a fishmongers so he went back the next day and already had a queue before he set up the stall. Soon David realised this wasn't just going to be a one off weekend. However, COVID19 restrictions were tightened and with 2m distancing introduced he was unable to do the fish pop up at Cut The Mustard. With a ton of Instagram messages from people who had seen or heard of him asking how they could get hold of some fish, he offered a delivery service so started doing some home deliveries. Eight weeks later David was renting a food preparation space in East London delivering around 200 orders over Friday and Saturday with the help of a couple of amazing delivery drivers. This was all whilst waiting for his forthcoming shop on Moyser Road to be renovated so he could move in.



SHOP STORIES



Aigoo

Unit 16, Putney Exchange Shopping Centre

"We at Aigoo love everything quirky, aesthetically pleasing and lovingly handmade. Our carefully curated collections include clothing, accessories, stationary and gifts from our favourite up and coming brands from across the globe, and the best Korean cosmetics. We aim to bring a little brightness to your day through our products and hope you feel the joys through them."

Sporting Feet

3 Lacy Road, SW15 1NH

Sporting Feet is an independent sports footwear retailer with shops in Putney and Richmond. Our Putney store serves Putney and the surrounding area including Wimbledon, Fulham, Wandsworth and Barnes. Our Richmond store serves Richmond and the surrounding area including Twickenham, St Margarets, Teddington, Kew and Chiswick.

We stock great quality footwear, custom insoles and accessories for most sports including running, tennis, gym & fitness, football, rugby, netball, hockey, cricket and many more. We cater for kids as well as adults.

We offer free gait analysis and also use the latest digital foot scanning equipment as part of our service. Our shops are also useful hubs for information about sport in the local area.

We pride ourselves on giving outstanding customer service.



Soul Brother Records

1 Keswick Road, SW15 2HL

The company supplies a wide range of cd's and records that are in demand and hard to find. The products include 12" disco records, making them perfect for deejays and collectors, and they are available from the shop and the website. Their team includes four experienced soul and jazz enthusiasts.

The company is owned by Laurence Prangell and Doreen Prangell who have been involved in the soul music trade for over 25 years. Laurence Prangell ran record enterprises in the 1970's and Johnny Reckless who runs the shop, has more than 25 years' experience running music shops.

Marjan Hair Salon

12a Roehampton High Street, SW15 4HJ

Marjan Movallali is the inspirational founder and artistic director behind Marjan Salon which boasts a dedicated creative team which has been carefully selected to deliver an impeccable client styling experience with the highest quality in women's and men's cuts with excellent finishing techniques. Marjan is committed to the highest level of customer care. We follow the most stringent standards of controls concerning professionalism, training, hygiene, cleanliness and image.

Emily of London

195 Replingham Road, SW18 5LY

Emily Baxendale is the Founder and Creative Director of Luxury Headwear brand Emily - London. The brand launched in 2014 and offers Designer Collections across the full Headwear spectrum. Every piece is handmade by the specialist Headwear team in the London studio, who also provide a fully Bespoke Service throughout the year. Emily Baxendale trained with the Royal Milliner before launching Emily-London Headwear. The label draws a coveted clientele of celebrities, members of the Royal Family, fashion stylists and International Press.

Excellent quality and impeccable craftsmanship are fundamental values that we apply in the creation of each and every piece of Headwear. We take the utmost pride in our work and in the look, feel and finish of our pieces. Every item is handmade by our specialist Headwear team in the London studio, using the combined techniques of conventional model millinery and traditional tailoring. Bespoke dye-ing and colour matching is carried out in-house by hand to ensure that we deliver the perfect results. Our headwear is designed and made with love and passion, as investment pieces for our clients to treasure and enjoy.



SHOP STORIES



Istanbul Foodgate

93-95 Mitcham Road, SW17 9PD

Okkes Toprak opened his shop Istanbul Foodgate in 2016. He found a gap in the market for Turkish groceries in Tooting. Being Turkish (Okkes is from Gaziantep), and with several years' experience as a grocer working for his uncle in Acton, Istanbul Foodgate was opened. The shop was very well received to the extent that Okkes's customers would ask him why he didn't rent the empty shop next door at 95, so he did! The shop is bigger with even more variety and not just Turkish produce but groceries from around the world. The Olive bar, the bakery and the butcher sections are part of the bigger shop now. Whether it be pomegranates or watermelons, kalamata olives or Turkish halwa, this shop is a little oasis of fresh global foods all on your doorstep.

The Printing Place

1 Selkirk Road, SW17 0ER

We are a family-run business since the 1980s and have been serving the community for over 30 years. The Printing Place is one of the longest trading businesses in Tooting and it has grown over the years, mainly through word of mouth. At the Printing Place our mission is to value all our customers and clients by promoting high quality printing services. We take great pride in our reputation for outstanding customer service to help our clients succeed. Our vision is to provide our customers with an experience which delivers great service combined with quality products.



Zoya

240 Upper Tooting Road, SW17

Zoyz London is a new Pakistani branded clothes shop, which opened up in March this year.

Friends, Lubeena and Tehmina both seasoned businesswomen, decided to open a fashion boutique, following their passion and love of clothes. They were both avid fans of popular Pakistani clothes labels, but were baffled as to why there was no retail outlet catering for the fast moving and trend setting branded clothes in London. They saw the niche in the market along with their combined talent, have made this venture a successful thriving business.

Tehmina, a solicitor and Lubeena a podiatrist have brought glitz and glamour to Tooting. Quality is paramount in all the clothes they sell, their stock ranges from casuals, semi formals, formals and bridals for women in all sizes.

NOTES

