

Recycling and waste – an overview

Councillor Steffi Sutters – Cabinet Member
Community Services and Open Spaces

November 2020



OUR PANELLISTS

- Megan Butler – Parents for Future South West London
- Mike Singham - Waste Strategy Manager, Wandsworth Council
- Jon Long – Education Officer, Western Riverside Waste Authority
- Dougie Sutherland – Chief Executive, Cory Riverside Energy



OUR VISION

- We declared a climate emergency in July 2019
- Our vision - to foster a community living within our environmental limits
- As part of this we asked our residents and businesses to support us by examining what they could do to help us move towards a sustainable future.
- Our waste strategy is just one strand of our work, but an important one and one in which you can all be involved





WANDSWORTH ENVIRONMENT AND SUSTAINABILITY STRATEGY



Our strategy and action plan for waste management and recycling, including:

- Low carbon approaches for our new waste contract, starting in 2024
- A trial of separate food waste collection and home composting
- Raising awareness of waste minimisation, reuse and recycling



INDUSTRIAL REVOLUTION FORWARDS

- Society's approach to materials and waste was based on a linear model
- This assumes an infinite supply of resources





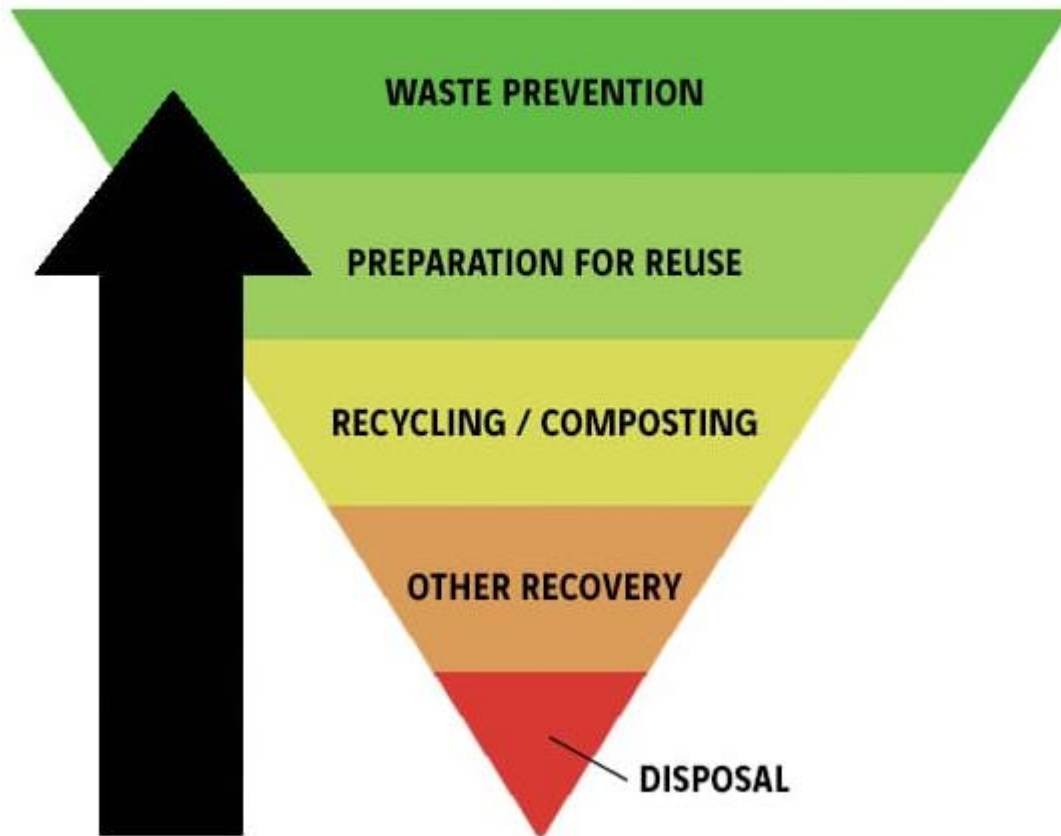
THE CIRCULAR ECONOMY



- Materials are kept in use for as long as possible, the maximum value is extracted from them as we recover and recycle when they are no longer useful in their current form



WASTE HIERARCHY



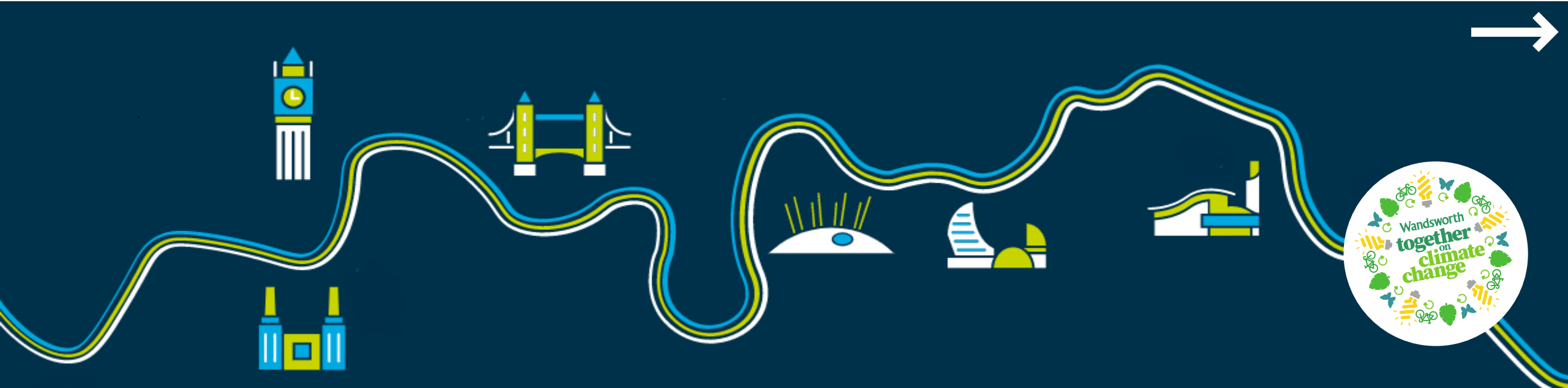
GENERAL PRINCIPLES

- To **REDUCE** the waste we generate in the first place
- To **REUSE** materials
- To **RECYCLE** materials that can't be used again as they are
- To **RECOVER** resources, for example anaerobic digestion and energy from waste

No time to waste: Resources, recovery & the road to net-zero, Policy Connect, July 2020



- We were an early adopter of Energy from Waste (EfW), having sent our waste to the Belvedere facility since 2012/13
- Waste from Wandsworth generates 80MW of power with 74MW of this being exported to the National Grid, generating enough electricity to power over 17,000 homes
- This process also produces bottom ash which is recycled as construction aggregate and air pollution control residue which is recycled to create building blocks for construction
- Residual waste is transported via the river, saving over 100,000 heavy vehicle movements each year and 13,500 tCO₂ – the equivalent of taking 6000 cars off London's roads



IN WANDSWORTH

- ✓ We collect recycling and residual waste
- ✓ We have a high level of satisfaction with existing refuse and recycling services
 - 81% of residents are satisfied with refuse services
 - 73% of residents satisfied with recycling services
- ✓ Wandsworth residents produce low amounts of household waste per person
- ✓ We are in the top 8 London boroughs for the least amount of collected household waste per person and in the top 20 nationally



Where does my recycling go?



Plastic bottles

Milk, fizzy drinks etc.

Corby and Dagenham (UK)

Paper

Newspapers and Pamphlets

Germany and Shotton,
Flintshire (UK)



Cardboard

Netherlands and
Dagenham (UK)



Plastic Pots, tubs and trays

Castleford (UK)



Sturdy plastics

Trigger Spray,
Plastic Containers

Horncastle (UK)



Manchester • Castleford
Flintshire • Shotton

• Horncastle

• Corby

Mixed paper

Germany and
Manchester



Clear Recycling sacks

Turkey



Glass

UK, Spain and Portugal



Willesden • Dagenham

• Netherlands

• Germany

Cans

Steel and Aluminium

Greece and
Willesden (UK)



• Spain
• Portugal

• Greece • Turkey

<https://wrwa.gov.uk/news/where-does-my-recycling-go/>



IN WANDSWORTH

- The amount of waste produced per Wandsworth resident has fallen every year for the last five years to 2019/20
- We have not sent waste directly to landfill since 2017/18
- We are continually reviewing our approach ahead of our new waste contract, which starts in 2024
- Our Environment and Sustainability Strategy and our Recycling and Reduction Plan demonstrate this commitment, including:
 - The introduction of a food waste trial and a trial for home composting
 - A targeted communications campaign raising awareness of waste



Please ask any questions in the Q&A box on Teams.

These will be collated and put to panellists at the end of the session.

