

Shingl

CHELSEA BRIDGE

QUEENSTOWN ROAD

QUEENSTOWN ROAD

BATTERSEA PARK

CARRIAGE DRIVE NORTH

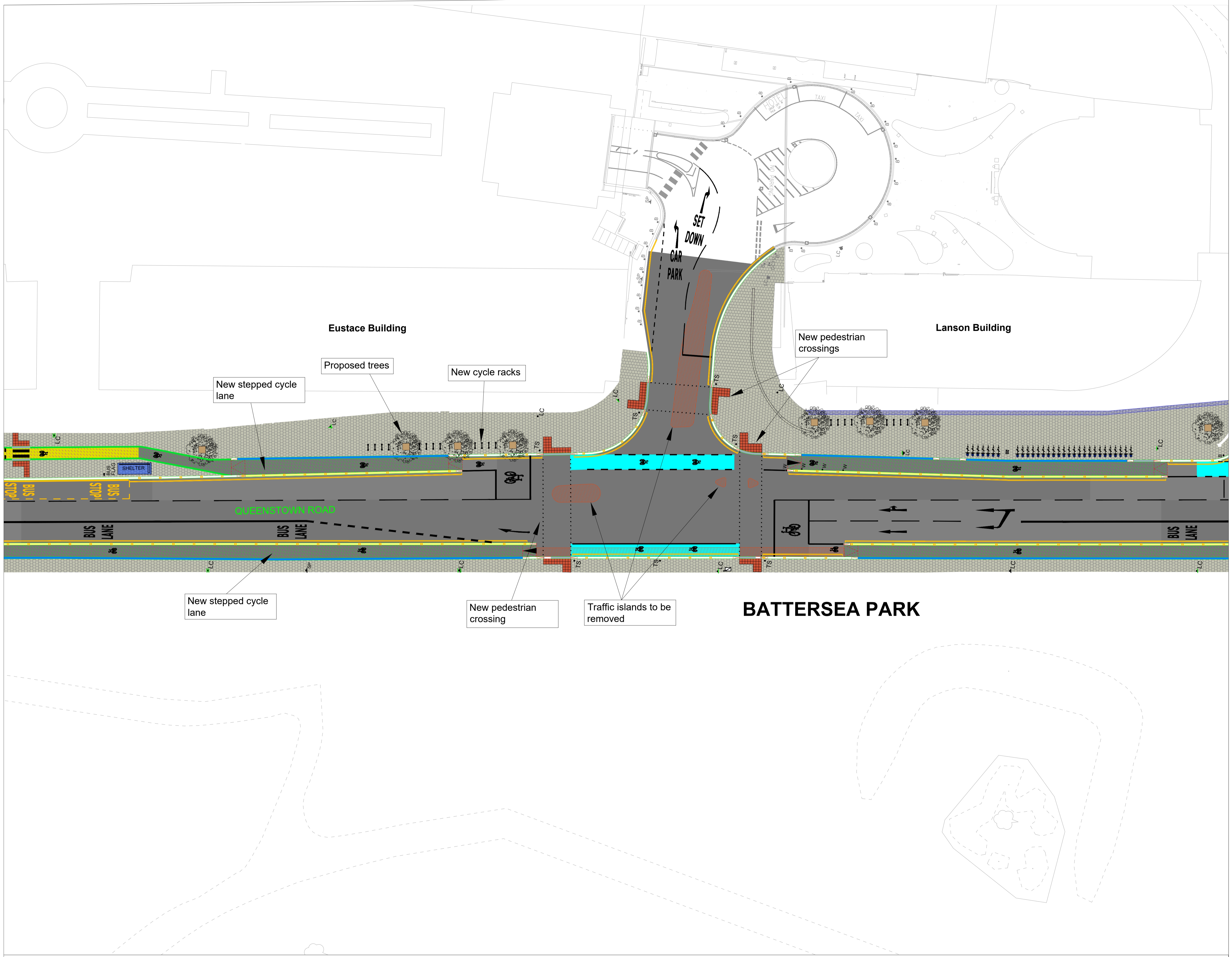
New traffic signals to protect right turns for cyclists into and out of Battersea Park via Carriage Drive North.

New stepped cycle lane

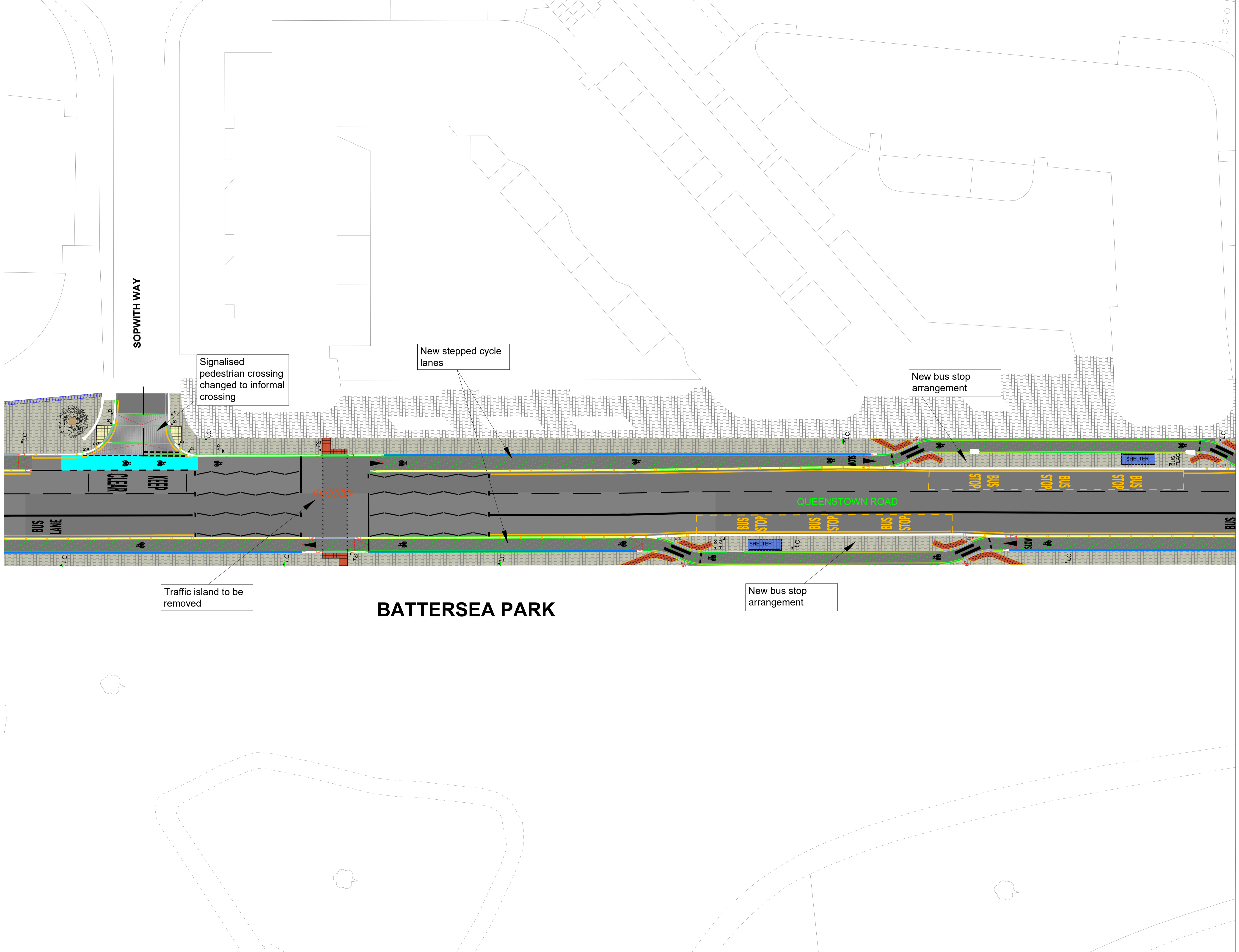
New bus stop arrangement

New stepped cycle lane

New cycle racks



QUEENSTOWN ROAD CORRIDOR SCHEME - SHEET 2 OF 4 (NORTH TO SOUTH)



Signalised pedestrian crossing changed to informal crossing

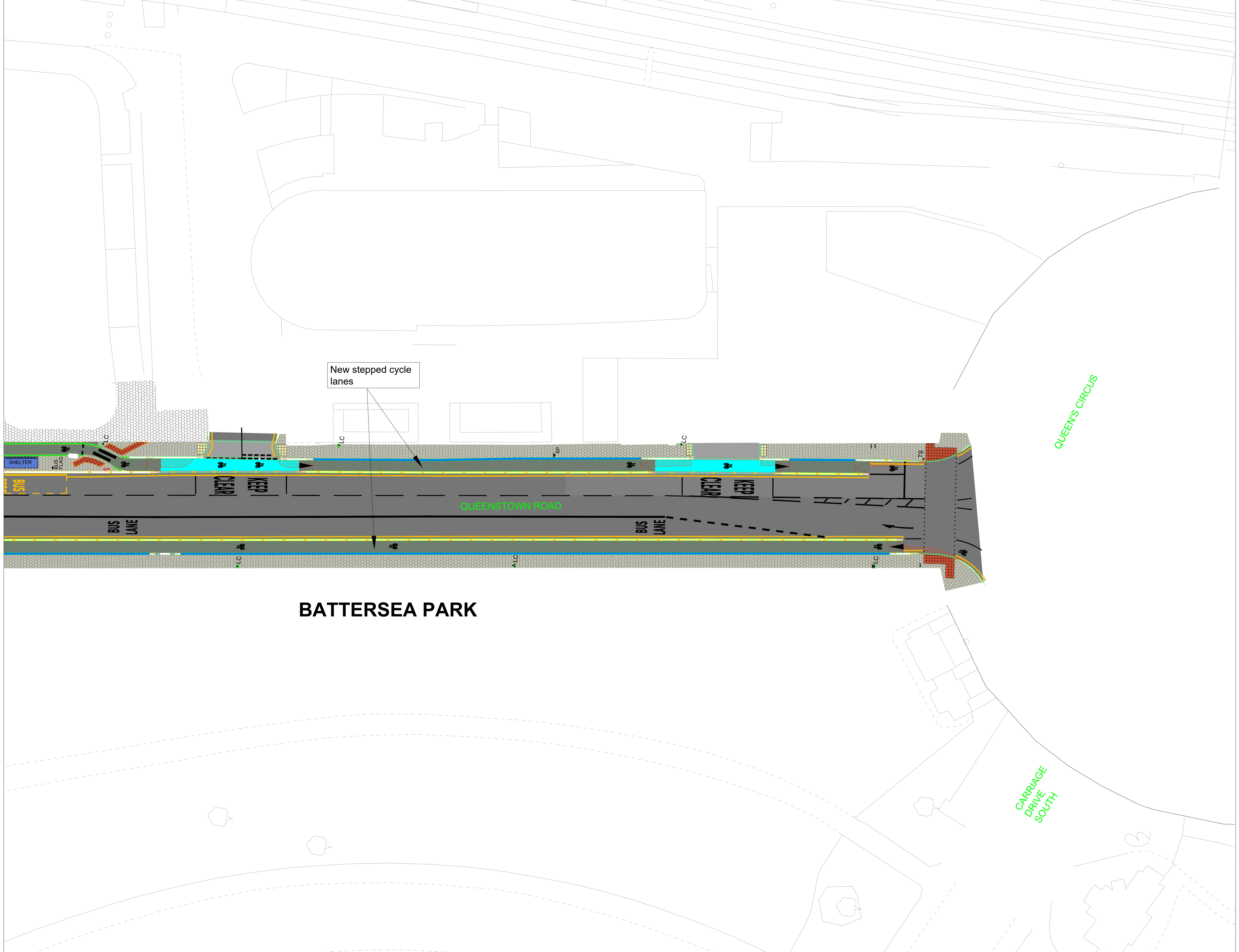
New stepped cycle lanes

New bus stop arrangement

Traffic island to be removed

**BATTERSEA PARK**

New bus stop arrangement



**BATTERSEA PARK**