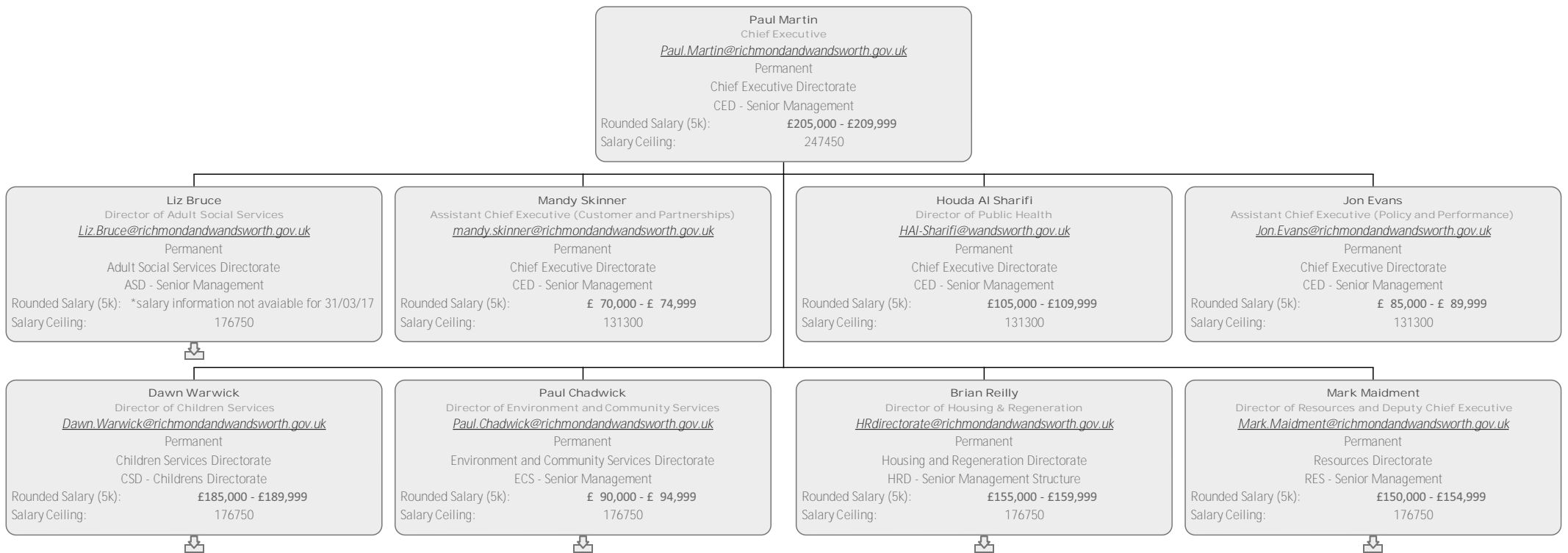


Directorate





Liz Bruce
Director of Adult Social Services
Liz.Bruce@richmondandwandsworth.gov.uk
Permanent
Adult Social Services Directorate
ASD - Senior Management
Rounded Salary (5k): *salary information not available for 31/03/17
Salary Ceiling: 176750

Derek Oliver
Assistant Director - Commisioning and Quality Standards
Derek.Oliver@richmondandwandsworth.gov.uk
Permanent
Adult Social Services Directorate
ASD - Senior Management
Rounded Salary (5k): **£ 75,000 - £ 79,999**
Salary Ceiling: 131300

Kerry Stevens
Assistant Director - Operations
Kerry.Stevens@richmondandwandsworth.gov.uk
Permanent
Adult Social Services Directorate
ASD - Senior Management
Rounded Salary (5k): **£110,000 - £114,999**
Salary Ceiling: 131300

Jeremy DeSouza
Assistant Director - Business Resources
Jeremy.DeSouza@richmondandwandsworth.gov.uk
Permanent
Adult Social Services Directorate
ASD - Senior Management
Rounded Salary (5k): **£ 70,000 - £ 74,999**
Salary Ceiling: 131300



Dawn Warwick
Director of Children Services
Dawn.Warwick@richmondandwandsworth.gov.uk
Permanent
Children Services Directorate
CSD - Childrens Directorate
Rounded Salary (5k): **£185,000 - £189,999**
Salary Ceiling: 176750



John Johnson
Deputy Director of Children's Services
John.Johnson@richmondandwandsworth.gov.uk
Permanent
Children Services Directorate
CSD - Childrens Directorate
Rounded Salary (5k): **£150,000 - £154,999**
Salary Ceiling: 176750





John Johnson

Deputy Director of Children's Services

John.Johnson@richmondandwandsworth.gov.uk

Permanent

Children Services Directorate

CSD - Childrens Directorate

Rounded Salary (5k): **£150,000 - £154,999**

Salary Ceiling: 176750

Rachel Egan

Assistant Director of Early Help

Rachel.Egan@richmondandwandsworth.gov.uk

Permanent

Children Services Directorate

CSD - Childrens Directorate

Rounded Salary (5k): *salary information not available for 31/03/17

Salary Ceiling: 131300

Michele Harris

Assistant Director of Children's Services (Children and Families)

Michele.Harris@richmondandwandsworth.gov.uk

Permanent

Children Services Directorate

CSD - Childrens Directorate

Rounded Salary (5k): **£110,000 - £114,999**

Salary Ceiling: 131300

Liz Rayment-Pickard

Assistant Director of Children's Services (Educ, Performance and Planning)

Liz.RaymentPickard@richmondandwandsworth.gov.uk

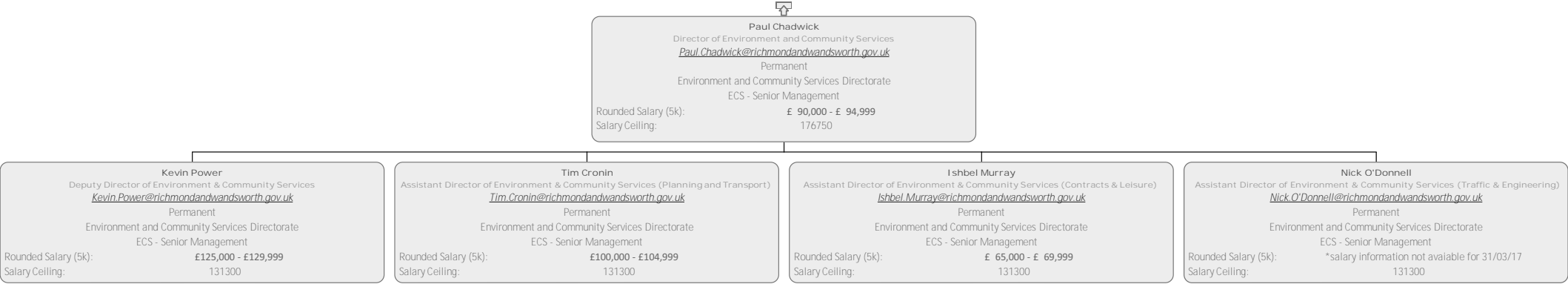
Fixed Term

Children Services Directorate

CSD - Childrens Directorate

Rounded Salary (5k): **£110,000 - £114,999**

Salary Ceiling: 131300





Brian Reilly
Director of Housing & Regeneration
HRdirector@richmondandwandsworth.gov.uk
Permanent
Housing and Regeneration Directorate
HRD - Senior Management Structure
Rounded Salary (5k): **£155,000 - £159,999**
Salary Ceiling: 176750





Mark Maidment
Director of Resources and Deputy Chief Executive
Mark.Maidment@richmondandwandsworth.gov.uk
Permanent
Resources Directorate
RES - Senior Management
Rounded Salary (5k): **£150,000 - £154,999**
Salary Ceiling: 176750

