



**Simon Bayliss**  
Managing Partner  
Project Lead

**Shawn Adams**  
Outreach Lead  
Engagement

**Becca Rose**  
Urban Designer  
Design team

**David Morton**  
Associate Partner  
Design team

**Sarah Nottet-Madsen**  
Architect  
Design team

**Lucy Smith**  
Partner  
Engagement

**Andrew Kavanagh**  
Senior Urban Designer  
Design team

## Our design and engagement team:

- We've worked together for many years
- Together we have designed and delivered a variety of comparable places to Alton
- We work collaboratively with communities to understand places better and co-design specific elements of projects
- Collectively we have extensive experience of estate regeneration and renewal projects
- We are pro-actively looking to find the best solution for the community and get the renewal plan delivered.



HTA Design is a practice of creative designers and innovative thinkers dedicated to making great homes and more sustainable places to live. Our team work with clients, communities, and collaborators to build lastingly popular neighbourhoods, engaging with people to create long-lasting, sustainable places.

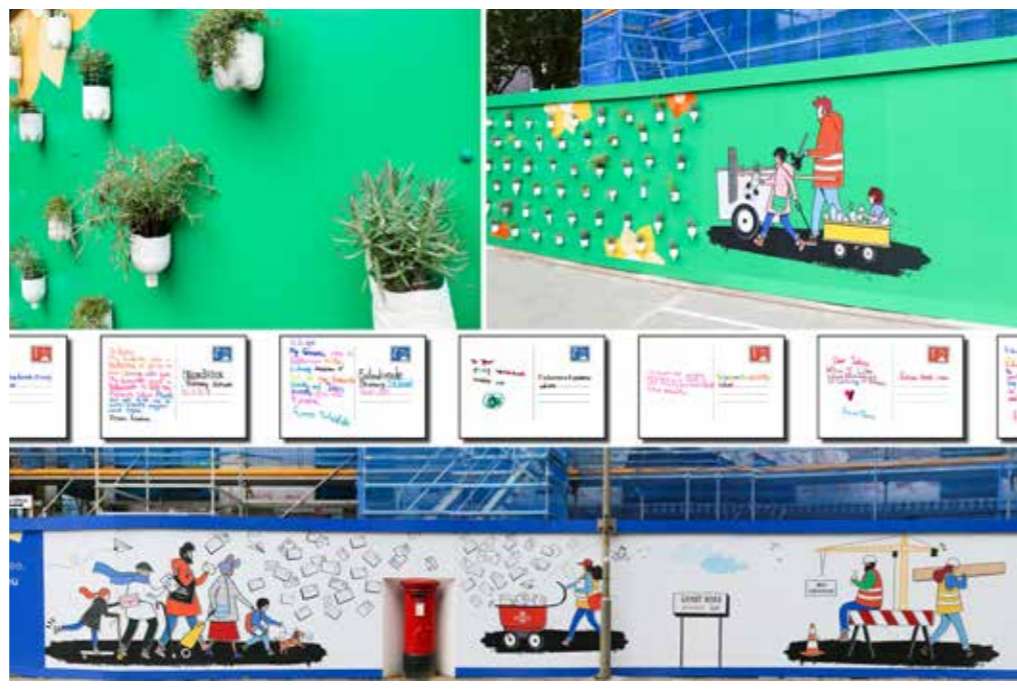
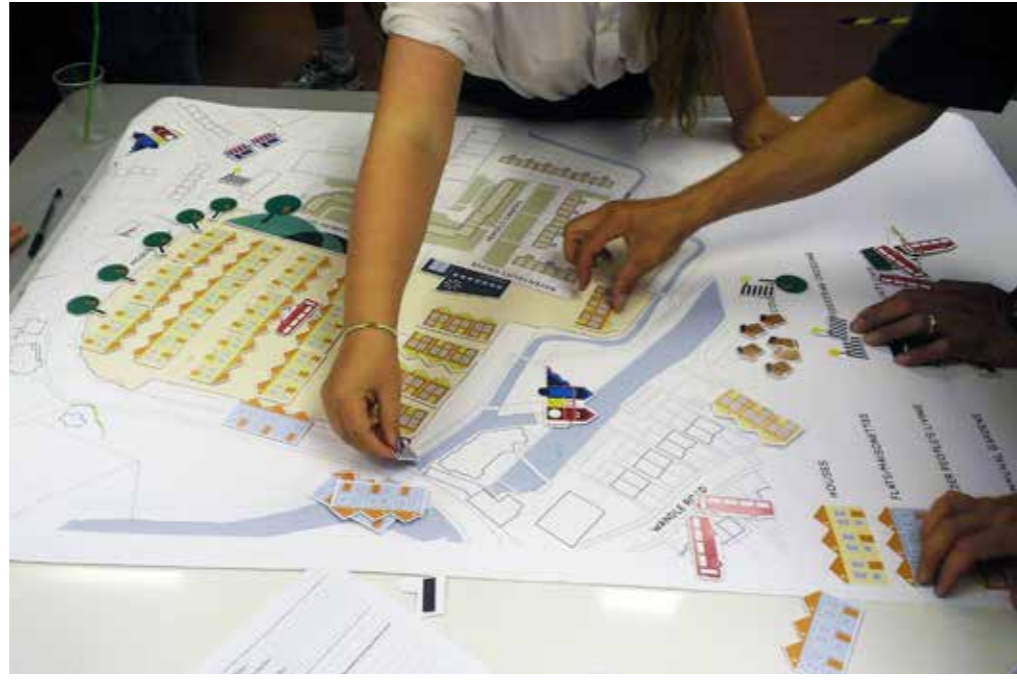
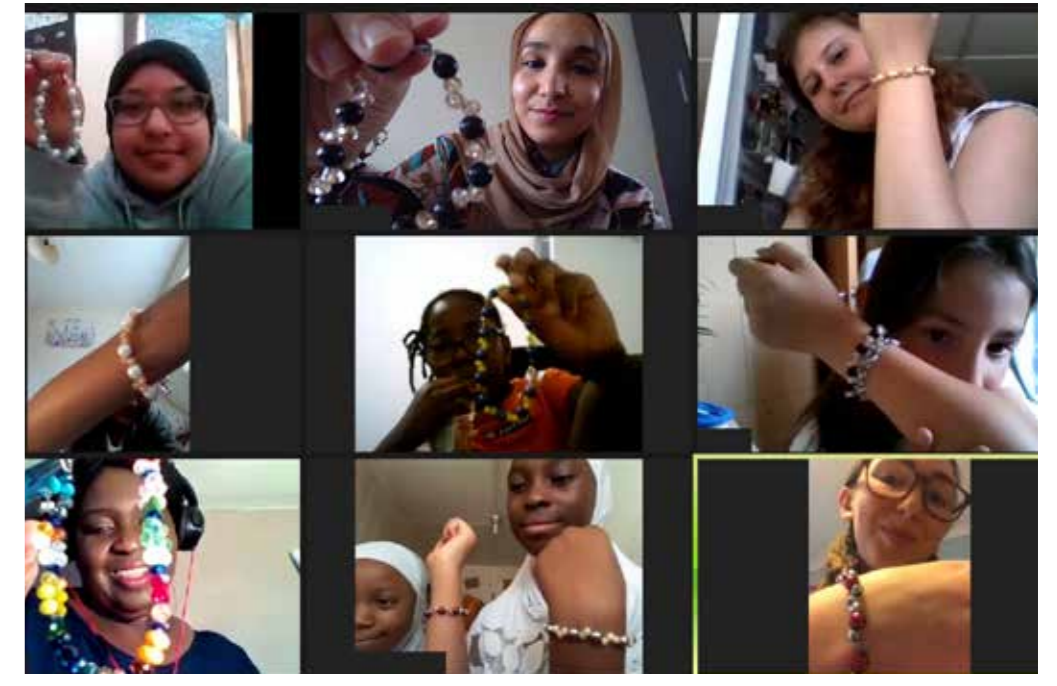




# What we do



## Working with communities...



## ... to make great places to live





## Aylesbury Estate, Southwark

One of London's largest housing estate regeneration projects - 3,647 mixed-tenure homes, co-designed with residents



## Kidbrooke Park Road, Greenwich

High quality council housing achieving 100% affordable homes, delivered by LB Greenwich



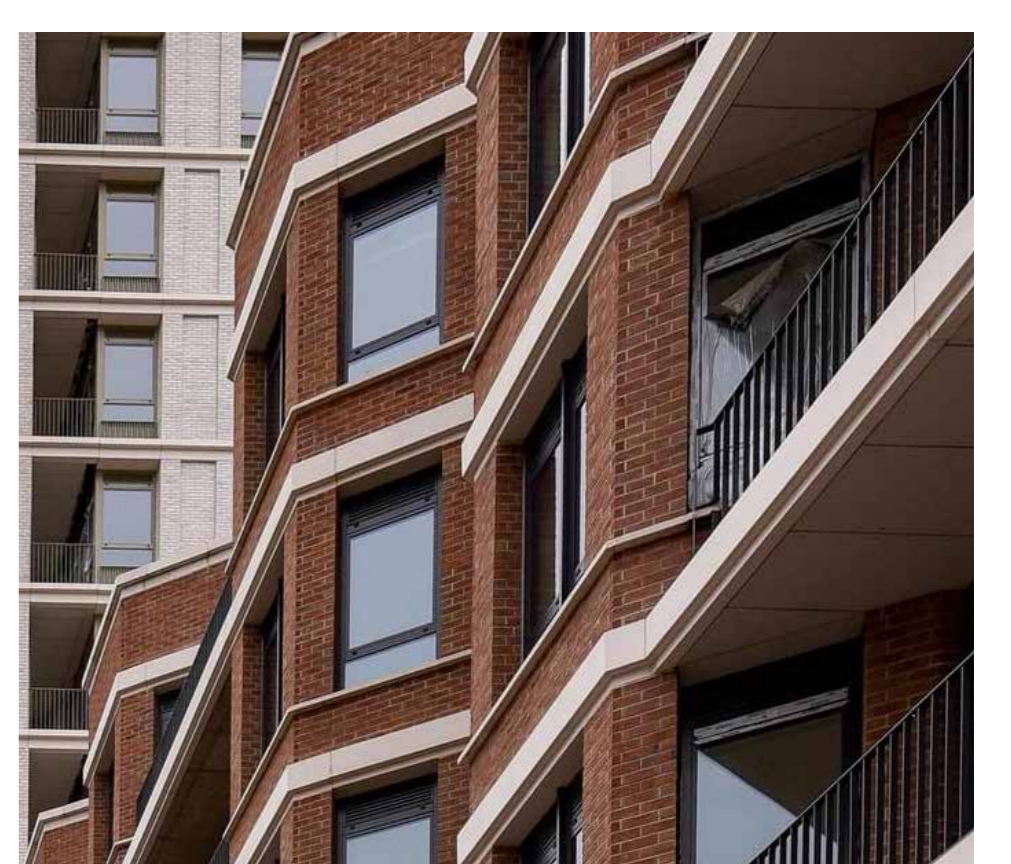
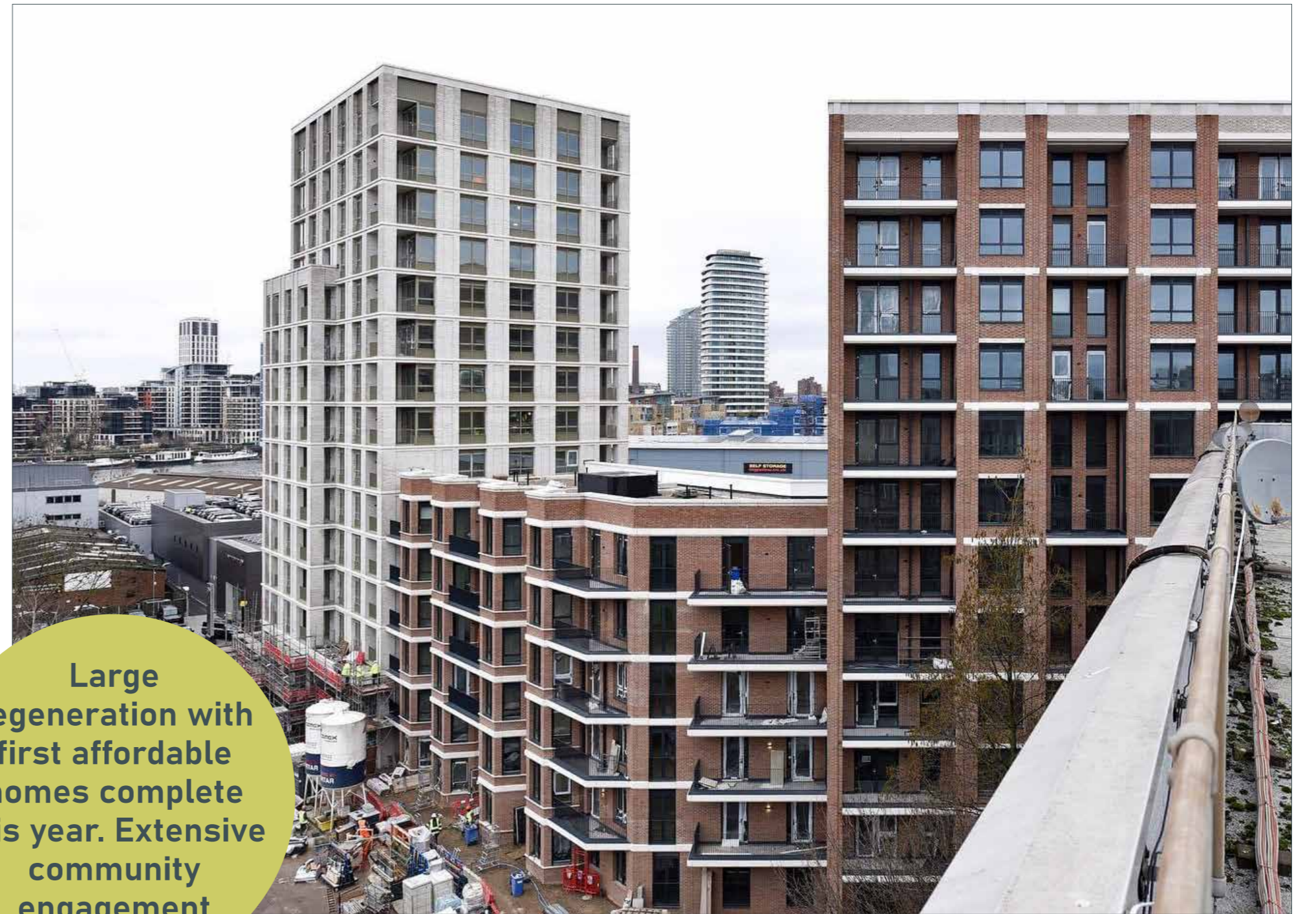
## Joyce & Snells Estate, Enfield



Residents' ballot in 2022, achieving a 78.5% positive vote in favour, from a turnout rate of 85.5%

## Winstanley & York Road Estates, Battersea

Large regeneration with first affordable homes complete this year. Extensive community engagement





Detailed review of the preferred masterplan option

Site analysis/ feasibility of a number of additional opportunity areas

Designing the preferred option

Supporting the resident and stakeholder engagement process

Coordinating with parallel Place Shaping projects where required



The extent of the area that we're looking at

## What is a masterplan?

'Masterplan' is an all-encompassing term, to describe the process of reviewing, designing and co-ordinating the spatial layout and environmental, social and economic outcomes of places.

'Masterplanning' can play an important role in ensuring that neighbourhoods and their components work well for all the communities they represent, and guide the principles of renewal to deliver successful places for people to live and work.

## What about community facilities?

Our role is to look at all of the different components that make places work for the community. This will include the re-provision of retail and community uses, as well as ensuring open space, trees and play spaces are protected.

## Will residents get a say in the design?

We are working towards a resident ballot next year and everyone will have their chance to contribute to the design process in advance of the resident vote.



## What's important to you?

### Community

Improved community facilities, shops and youth facilities.

### Neighbourhood

Improved estate management, maintenance & perceptions around safety.

### Accessibility

Improved local bus services, accessibility & movement through the estate and beyond.

### Economic Inclusion

Attracting new shops and businesses, More skills, training and employment opportunities.

### Environment

Improved energy efficiency of homes & balance between the number of homes/greenspace.

### Homes

Support for more Council homes and a higher proportion of affordable homes. Addressing overcrowding.

## Listen and Learn

We're trying to meet as many of you as possible, to hear what you think about the Alton.

We'd like to hear about your personal experiences of living here, and how you think we can help make it a better place for all.



## Workshops

Running open workshops helps us to gather lots of immediate feedback directly from the community. It helps us to form a picture of what everybody thinks and helps you to share opinion and discuss in an open forum.



## Walkabouts

By walking about the Alton with you, we get to see and hear real issues rather than just looking at drawings.

It helps us to understand how you use your neighbourhood, and how you'd like to see it change.



## Events

Alongside all of these activities, we will be holding regular sessions where we can feedback to everyone.

We will show design progress, and report back how the community has helped shape the design. There will be opportunities to feedback throughout the entire process.



## Co-design projects

There will be specific projects that we will need your help with. We will identify these projects and create opportunities for people to be involved in designing certain elements of the project.

Co-design projects are most successful if we can have input from a wide range of voices.



## Get in touch!

We need to hear from everyone who wants to have a say in shaping the estate.

You can contact us directly about the project - your ideas, worries, dreams!

We want to hear the good and more importantly - the bad, about where you live; where you go in Roehampton; how you travel; where you socialise - let us know your thoughts.

You can email us or come and see us at any future events - look out for details on the website.

W

[www.altonrenewal.co.uk/news](http://www.altonrenewal.co.uk/news)  
[www.wandsworth.gov.uk/roehampton](http://www.wandsworth.gov.uk/roehampton)

E

[altonestate@hta.co.uk](mailto:altonestate@hta.co.uk)  
 Subject 'Alton - have your say!'