

Alton News

Alton's revival - Celebrating our achievements, transforming our future

Inside...

Hear from residents on renewal successes, recap on the summer's best events and get ready to cast your vote in September's ballot

Your
vote 
matters

For the full details on the upcoming ballot, turn to page 8

Alton
RENEWAL PLAN

W: [wandsworth.gov.uk/alton](https://www.wandsworth.gov.uk/alton)
W: [altonrenewal.co.uk](https://www.altonrenewal.co.uk)
X: @AltonRenewal

The Alton Renewal Plan – your vote matters!



I am delighted to welcome you to this latest edition of Alton News, which focuses on the next phase of the Alton Renewal Plan. As the council's cabinet member for Housing, I am really excited about these new plans which are designed to put investment directly into your estate, working together with you to ensure Alton thrives for generations to come.

I'm really pleased to see the significant progress already underway. We've seen new council investment across the estate, directly addressing priorities that residents like yourselves have consistently raised. From new bus services, to the opening of the incredible new Roehampton Family Hub in October 2024, and investment in community safety improvements, these are real signs that the renewal is having an impact. We're also seeing new council homes being completed, which is fantastic news for our community.

The Alton Renewal Plan is about creating a better living environment, where people can truly stay, grow, and prosper. This plan has been shaped by your feedback, and it continues to develop with your input at its heart.

Looking ahead, a crucial moment for the Alton Renewal Plan is the upcoming resident ballot, which will take place between **September 22** and **October 16, 2025**. This is your opportunity to have the final say on the proposals, particularly regarding new homes and improved community facilities outlined in the Landlord Offer. An independent organisation, Civica, will be running the vote, and you'll be able to participate by post, online or phone.

This ballot is incredibly important. Your vote will determine the future direction of our estate, ensuring that the changes reflect the needs and aspirations of those who call Alton home.

I strongly encourage everyone who has a vote to find out more about the plan.

Your voice is vital. Please take the time to understand the proposals and cast your vote in the upcoming ballot. Together, we can build an even better Alton.

Aydin Dikerdem
Cabinet Member for Housing



Sign up to receive text alerts

Our text message distribution list enables residents to receive news and event information relating to the Alton Renewal quickly and directly.

If you are interested in signing up to receive our text alerts, please call or text **020 8871 6207** or email us at **altonrenewal@wandsworth.gov.uk** with your name, address, mobile phone number and the phrase/subject line **'Alton text alerts'**, and we will add you to our SMS distribution list.

Alton Newsletter have your say!

The Alton Team try to put together news and articles that we think you'd like to read.

Do you enjoy it? Is it relevant and of interest? What else would you like included?

We'd appreciate your feedback to help shape future editions.

Please send any positive comments or constructive criticism to our mailbox

altonrenewal@wandsworth.gov.uk putting **'NEWSLETTER FEEDBACK'** in the subject line.

Or call us on **020 8871 6207**.

We look forward to hearing from you.

Alton Team Contact Details

You can contact the Alton Renewal Team on **020 8871 6207** or **@AltonRenewal** or at **wandsworth.gov.uk/alton**

If you would like to discuss anything in person with a member of the team, please contact us and an appointment can be arranged.

You can also find us at the Information Stall **outside the Base** on Danebury Avenue each **Friday, from 2pm-4pm**.

Roehampton Ward Councillors

Councillor Jenny Yates
cllr.j.yates@wandsworth.gov.uk

Councillor Matthew Tiller
cllr.m.tiller@wandsworth.gov.uk

Councillor Graeme Henderson
cllr.g.henderson@wandsworth.gov.uk

You can also contact the
Cabinet Member for Housing:

Councillor Aydin Dikerdem
cllr.a.dikerdem@wandsworth.gov.uk

Councillor advice sessions are held on the **first Saturday of every month at Roehampton Library**, 2 Danebury Avenue, from **11am - 12 noon**.



Alton Renewal Plan in action: Making a difference

Work on turning the Alton Renewal Plan vision into reality has been steadily progressing since the plans for investment were officially launched by Simon Hogg, Leader of Wandsworth Council in July last year.

What's happened

Over the last 12 months we've delivered improvements across the estate including:

2024

- July** New Alton Road zebra crossing and Heathmere School Street.
- September** Free community bus service launched to supermarkets, local attractions and days out.
- September** Free university shuttle bus for residents during term time in 2024/25.
- October** Residents move in to new homes in Gerard House.
- October** Roehampton Family Hub opens its doors.
- November** Restored iconic bull sculpture is unveiled by local schoolchildren.
- December** 1,000 warm packs distributed to help people save on their winter energy bills.

- March** The community came together to plant a wildflower meadow in the green space outside the library.
- June** For seven weeks, 24 Alton residents aged 5 to 75+ met at Roehampton Library to increase their fitness in local green spaces. Loosely guided by the NHS Couch to 5k app, they walked more than 400,000 steps. One participant said: "When I leave the house, I feel alive. Slowly, slowly I feel stronger, and I have lost weight too."

What's coming up

2025

- January** The first new bin enclosures installed ahead of being rolled out across the rest of the estate by the end of the year.
- January** Creativity in Alton schools programme launched. A class teacher at The Alton Primary School, said: "The children are making great progress in their 1:1 lessons. They are all loving the opportunity to learn the skill of playing a new instrument and speak highly of the experience." *Beatrice D, deputy head, Heathmere Primary School.*
- March** Our newly-funded Community Safety Support Officer, Leo Bunting, started work on enhancing community safety across Alton. He has regular walkabouts with the police, meets with community groups and attends events across the Alton.
- March** Over 150 adults and children attended the Splash of Colour event outside the library. The local community and artists created some beautiful artwork, which is now being displayed near the leisure centre.
- March** Local residents on the Alton Community Panel met for the first time. They continue to meet every month, working with the council and architects to shape the future of the renewal plans.
- March** Repairs to roads and pavements continue to be carried out across the estate.

Autumn/Winter

- Focus Hall is currently being refurbished, with work due to be completed this Autumn. Keep an eye out for details of the eagerly anticipated opening and new programme of community and cultural activities.
- Urban Flow transforming Danebury Avenue on September 13 with live music and dance during London Borough of Culture (see page 7 for details).
- Augmented reality trail across the estate to explore the area's history and nature using a phone or tablet.
- New council homes and specialist homes for people with learning disabilities will start to be built at Bessborough Road and next to Farnborough House on the Alton Estate as part of the Homes for Wandsworth programme.
- Lighting improvements will be made across the estate.
- New murals will be painted in several locations on the estate.

Winter/Spring

- Improvements to shop fronts on Danebury Avenue and Portswood Place.
- New play areas on Downshire Fields and at the Alton Activity Centre will open.
- The Community Bluescapes team has been working with local people to develop solutions for flooding and extreme weather - landscape improvements will be in place by the Spring.
- Improvements will be made across the estate to make it easier to walk around. This includes two new Quiet Cycle Routes that will connect the estate to other areas.



Supporting local job-seekers

This year the council's annual Employ Wandsworth event was held at Whitelands College in Roehampton. Organised by the council's jobs service, Work Match, the move to Roehampton was in response to requests from Alton residents for better access to skills and employment opportunities.

Residents were able to chat to more than 50 companies looking for local talent, got advice on training and career development and took part in workshops.

Spotlight on: Free community bus service

Call 020 8675 3812 to book.

A free door-to-door service operates every:

Monday to Tooting Market and St George's Hospital.

Tuesday to Roehampton ASDA on the A3, Queen Mary's Hospital, the library, Chantelle's Kitchen and the Richmond Park Café.

Special outings are now scheduled over the summer to Worthing, Southend on Sea and Brighton.

E-cycle parking bays – share your ideas for locations

We will be creating five new e-bike and e-scooter parking bays later this summer. If you have any suggestions for locations, please contact the council's Transport Team on 020 8871 6000.

New Roehampton Partnerships and Co-ordination Officer

A new Roehampton Partnerships and Co-ordination Officer will be recruited this summer to work closely with the community, council, local forums and Voluntary and Community Sector, bringing local people and resources together. Funded by the council's investment in the Alton Renewal Plan, the role will be advertised this summer with details on the council's website jobs.richmondandwandsworth.gov.uk and local newsletters.

Our Alton, our story: Residents share their renewal experiences

We've been listening to residents' views on how our improvement plans for the Alton are bringing changes that people want to see - including improved community facilities and public spaces, together with more genuinely affordable homes.

Since day one, the plan has been shaped by people of all ages from across the local community, including members of the Youth Advisory Panel (YAP) for Roehampton. We recently caught up with some of the members to get their views on their involvement and impact so far:

“I've gained endless amounts from the youth panel. This includes learning about simple things like the history of Roehampton and how it influences the places near us. We have also decorated items that will soon be present in the developing playgrounds. Overall, the experience and knowledge I have gained from being a member of the youth panel has been valuable. I am excited to work more and see our thoughts come to life.”

Lamees Bazuti

“Each of the sessions are led by a key active member of the projects and there's a really defined sense of having an impact,

which is very motivating and also exciting considering the great generation plans. I have learnt so much from the youth panel while also achieving so much as well.”

Layan Bazuti

“I've enjoyed taking part in the sessions and I feel I have become more confident each time I attend. I feel proud that I am doing something for the community and everyone will enjoy it.”

Nelita Barratt

“When I walk past the Alton Activity Centre, I feel proud knowing I played a part in the development. We are now working on a new building for the Base Youth Centre.

I am quite confident that once completed, it will make a significant difference to the young people in the area. In the future, the area will be more inviting for people to shop and have a coffee as it should look more attractive.”

Aston Davis





Focus on: The revised Masterplan and Block A

The latest update on the renewal plans

The development plans for the Alton Estate have come a long way during the past few months. The ideas for new outdoor community spaces, new homes, bigger and better shops and new community facilities have all benefited from feedback from residents and focused user groups at a variety of consultation events.

As a result, the renewal plans are now ready to form part of a residents' ballot, which will decide the future of the Alton estate proposals and is taking place in September (turn to page 8 for the full ballot details).

A new neighbourhood and an enclosed public green space

In the largest part of the development, Danebury Neighbourhood, it is proposed that a number of new buildings between Danebury Avenue, Harbridge Avenue and Kingsclere Close will be built. As part of the proposals, the new neighbourhood will have new pedestrian and accessible routes, as well as a new enclosed public green space in the middle where people of all ages can relax and play in landscaped gardens.

New parking, shopping and community spaces & a larger supermarket

Meanwhile, next to Danebury Neighbourhood, behind Allbrook House, the vision is for a new community square with parking

Please keep an eye on the Alton Renewal website, Wandsworth Council's X feed and local notice boards, and look out for details of future drop-in events for more information.

Your views and suggestions are important to shape the developing designs.

underneath that will provide a paved open space for markets, performances and events. Framed by shopping and community spaces, the square is seen as being the rejuvenated heart of Alton. The row of shops along Danebury Avenue will be re-built with space for a larger supermarket and new homes above.

Two new community buildings, a larger library and youth, work & community spaces

Two exciting new community buildings are also being proposed - a Family Hub building at Portswood Place and a Community Hub building at the entrance to the estate on Danebury Avenue. The Family Hub will incorporate the nursery and family services from 166/168 Roehampton Lane, with new community spaces, shops and the GP Surgery. The Community Hub will provide an impressive, new and bigger location for the Library, together with dedicated youth spaces, workspace, offices and new community spaces at the top floor with an outdoor terrace overlooking the estate.

New homes

Under the plans, the site at 166/168 Roehampton Lane will be developed to provide new homes, including a row of new terraced houses.

Further consultation and exhibition events will be held throughout the rest of the summer to share the design proposals and details of the upcoming ballot with residents.

Bringing the vision for Block A to life

Throughout June, the Alton Renewal Plan team met with residents and local groups to get their feedback on the proposals for Block A - the community and residential buildings that will be located on the corner of Roehampton Lane and Holybourne Avenue (on the site of the former Co-op).

The design work for the new larger library, youth space, community space, shared workspace, council offices and more than 50 new council homes is progressing well, and a planning application is due to be submitted at the end of the year.

We promised you we would get going with this site, so these buildings will go ahead whatever the result of the vote.

The Youth Advisory Panel has played a big part in shaping the layouts, facilities and equipment offered in the new Base youth space and outdoor play areas.

Thank you to all of the local groups, including the SW15 Women's Network, the Roehampton Community Box, Chantelle's Community Kitchen, the Over 60s Café and the Access and Inclusion Panel, for welcoming the Block A design team to their regular sessions, listening to the presentations and feeding back on the proposals.

A concept sketch for the community hub and residential buildings.



A big thank you to all of the residents, who attended the pop-up event on Hersham Close next to the proposed development site. The team was particularly keen to hear from the younger community about their ideal play equipment - a tree house, which was the clear winner, thanks to the fun Post-it Note voting system!



More than
450 residents
took part in **15**
events in May
and June

Enjoying summer on the Alton estate

There's been plenty for residents to see and do across the Alton estate this summer, thanks to a jam-packed programme of activities that has been delivered by the Alton Renewal Plan team.

Thank you to everybody for coming along, getting involved and helping make the events a huge success!

Event highlights so far

- May 13** Wayfinding Walkabout Around the Alton Estate
- May 14 & 21** Chantelle's Community Kitchen Table Top Alton Arts Hub, Portswood Place
- May 17** Listening to You – Community Drop-in Roehampton Sports and Fitness Centre
- June 11** Have your say on Block A development Holybourne Avenue Green
- June 23** Women's Euros 2025 celebration Roehampton Library

Learning more, sharing your views & keeping cool with free ice cream!

Despite it being one of the hottest days this year, more than 130 people attended our drop-in event outside Alton Community Hall on Petersfield Rise.

Residents were invited to take part in discussions about the future of the area and greeted with a much-needed ice cold treat - an ice cream! The event provided people with a valuable chance to voice their opinions and concerns and ask questions they had. Everybody left feeling really positive about the future of the Alton.

Residents from Harbridge Avenue, Kingsclere Close and the affected Danebury Avenue areas were also recently invited to an exclusive drop-in event to have their say on the plans for the future of housing, shops, community and open spaces and discuss how the plans will impact them.

Thank you to everybody for taking the time to come along, your feedback is extremely important.

Don't miss out

For information about the events and consultation activities coming up, **visit: altonrenewal.co.uk**



Future activities: Keeping Alton connected all summer-long

The Alton Renewal Plan team has been busy delivering a whole host of free, family-focused events across the community so far this year, and the good news is, we have many more activities to deliver across the estate. Let's take a look at some of the key events that are coming up over the next few weeks and months:

Events in August

Alton Practice Community Connect

Friday 15 August, 12noon to 12pm

Outside Roehampton Library, Danebury Avenue

All age groups (children accompanied by an adult) are welcome at this free drop-in session for new patient registrations, health checks and advice.

Contact sharowna.eastman-barnett@nhs.net.

Fun art workshop

Friday 15 August, 1pm to 3pm

Roehampton Library, Danebury Avenue

Run by Hestia, this fun and easy art workshop is open to adults and children aged 5+.

Contact Rita - kawing.hung@hestia.org or 07826 779684

Rockin' in the Rookery

Saturday, August 16, 2pm to 5pm

Downshire Field (Bull Green)

Come along and enjoy a spectacular summer party, featuring Choice FM, stalls, a bouncy castle, rodeo bull, games, BBQ, face painting and much more. See page 11 for more details.

Events in September

Urban Flow

Saturday, September 13, 12pm

Starting near Roehampton Library and ending on Bull Green

As part of Wandsworth's exciting London Borough of Culture year, Urban Flow is coming to the Alton Estate! Enjoy this spectacular outdoor dance and music procession, starting near Roehampton Library and ending with a joyful finale on Bull Green.

Expect to see fantastic performances from local groups, including Hummingbird Blue, Pointe Black, Mauritian Fusion, UK Latin Community, Sisterhood Wellness, Ibstock Place dancers, and more, alongside the The Roehampton Street Band.

Over the summer, these groups have been working with amazing choreographers from Tavaziva Dance, Kinetika People and Attakkalari to blend their own dance styles, plus learn new moves, using 100 hand-painted silk pennants created by community groups in India and Wandsworth. You don't want to miss it! Interested in being a local culture hero? If you'd like to help out and volunteer on the day, sign up here, visit welcometowandsworth.com/events/BC-urban-flow for more information.



Get involved

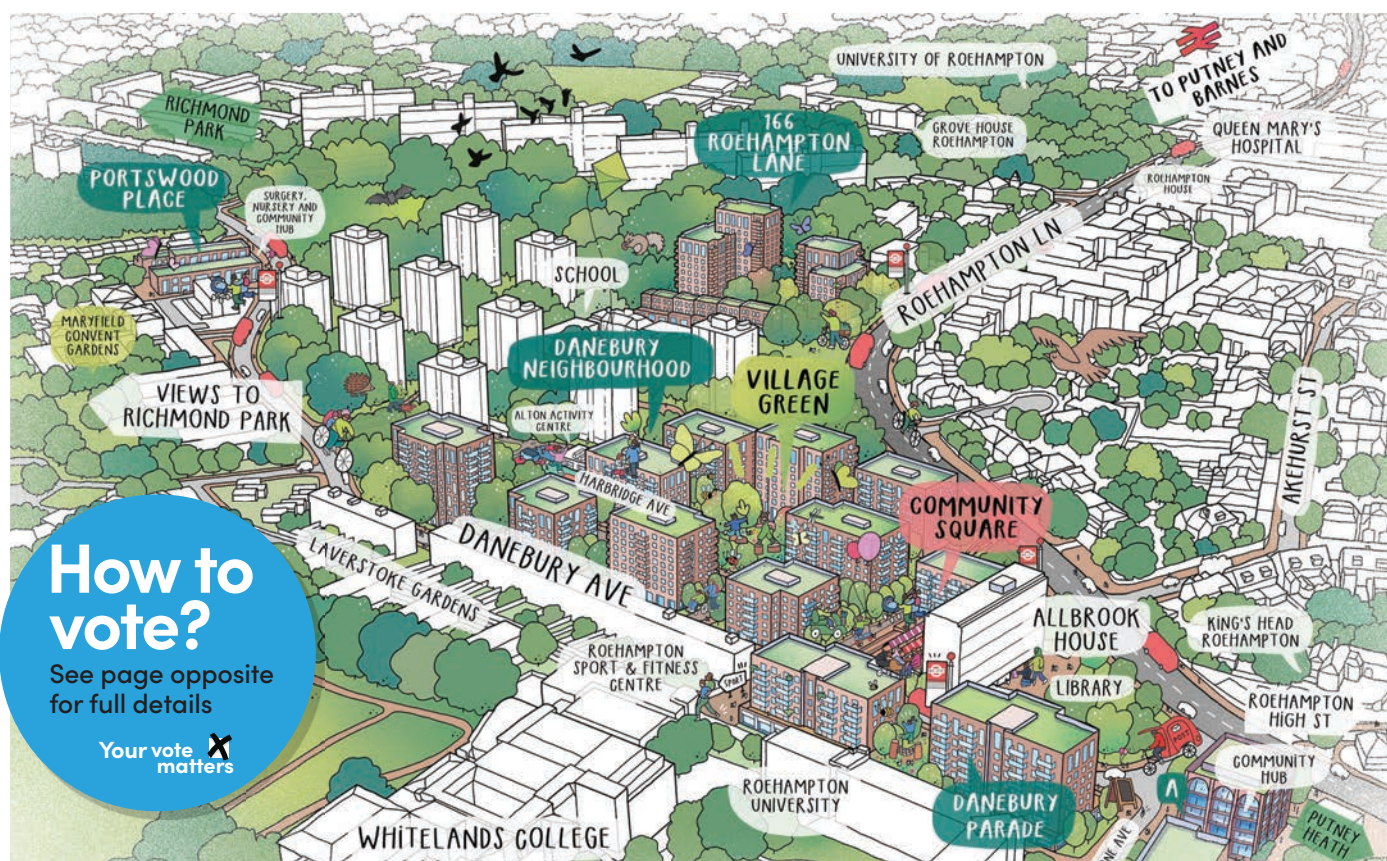
Whether you want to dance or set up a community stall, email getintouch@tavazivadance.com

Calling all creatives - share your work with Wandsworth

Are you an artist, performer, maker or creative based in Wandsworth? We'd love to showcase your work.

The Welcome to Wandsworth website is the go-to hub for all things creative across the borough. By creating a free Creative Profile, you can share your work, promote your events and connect with new audiences.

Sign up here: welcometowandsworth.com/creative-account



Shaping our future: Understanding the Alton renewal ballot

Earlier on page 5, we shared an update on the revised Masterplan with you, which is the future vision for the Alton Estate. Since the renewal plans were first unveiled, resident involvement and feedback has played a key role in shaping these plans.

The next major phase in the process will take place next month (September) - Wandsworth Council will publish its Landlord Offer. It will provide all the key information on the new plans for the estate and the support on offer for residents directly affected by the development work.

Residents will be invited to vote on the Landlord Offer in a ballot that will take place from September 22 until October 16.

What is the ballot?

An opportunity for eligible residents – including tenants,

homeowners and leaseholders – to vote on the future plans for the Alton Estate and make sure their voice is heard.

Why is it happening?

Residents are at the heart of the Alton Renewal Plan and it is important that their voices shape its development and implementation.

“The Alton Renewal Plan is about more than just buildings; it’s about people and community. Effective communication is essential to its success, ensuring residents are fully informed about these improved proposals and the upcoming ballot.

“We are committed to open and honest conversations, and we are putting residents at the heart of this plan. Their voices will shape the way it’s designed and built.”

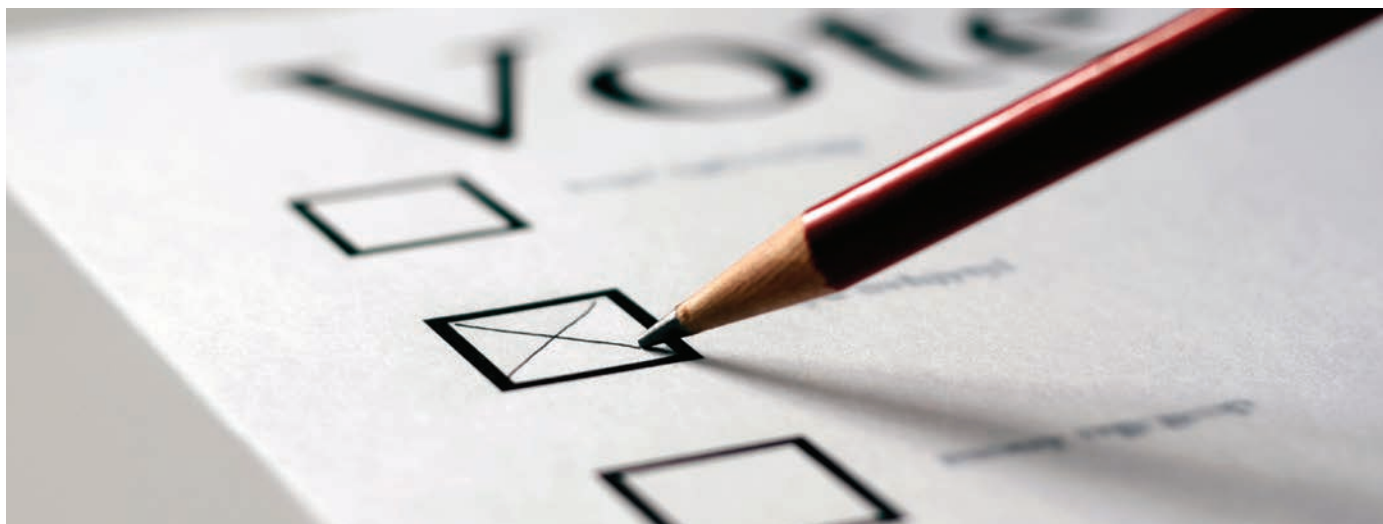
Matthew Tiller, Deputy Cabinet Member for Housing

Where can you find out more about the Landlord Offer?

The Landlord Offer, which is available in detailed information packs from early September, explains the new plans for homes and facilities on the Alton and the options and support available for residents.

You can find more details on our website: altonrenewal.co.uk/renewal/ballot

Residents are being encouraged to review the offer and attend upcoming information sessions where council officers will be on hand to answer any questions they may have or email: altonrenewal@wandsworth.gov.uk



Your vote matters: Practical guidance on the Alton ballot

The Alton Renewal Plan ballot opens on September 22. All eligible residents are being encouraged by Wandsworth Council to make sure they do not miss out on their chance to vote.

Secure council tenants, long-term temporary accommodation residents and leaseholders/freeholders, who have lived on the estate for more than a year, are all eligible to cast their vote.

Q. Who can vote?

A. People who live on the estate as secure council tenants, or leaseholders/freeholders. Other people who live on the estate can also vote if you have been on the council housing waiting list for a year when we send out the Landlord Offer.

Q. Why should I vote?

A. This vote is about your home and neighbourhood. It's important your voice is heard.

Q. What do I need to read before voting?

A. The Landlord Offer will provide the information you need to make a decision on the proposals. It will be sent out around two weeks before voting opens. There will also be lots of opportunities to find out more about our ideas over the summer via events, newsletters and online information.

Q. Will my vote be secret?

A. Yes, your vote will be secret. No one will know how you voted.

Q. Who runs the vote and how do I vote?

A. An independent organisation, called Civica, will run the vote. You will be able to vote by post, online or phone and the voting will be open for three and a half weeks from Monday September 22.

Keep an eye out for:

Your ballot pack, which will be posted through your door in September and contain your ballot card and full details of what you need to do next.

What does a Yes vote mean?

The plans for new homes, new shops and facilities and a GP surgery at Portswood Place will only go ahead if there are more yes votes than no votes.

If it's a 'yes' then all the regeneration proposals set out in the Landlord Offer will go ahead, including the improvements in the Alton Renewal Plan.

The council will lead the work rather than working jointly with a private development partner, and so the decision to go ahead is within the council's control and the council will be accountable to you as residents.

What does a No vote mean?

A 'no' means the old homes stay, and the big changes planned won't happen. However, we will continue with the other activities you may have seen happening as part of the Alton Renewal Plan.

These include the early improvement plan works such as more plants and play equipment and the colourful murals and artwork designed with residents.



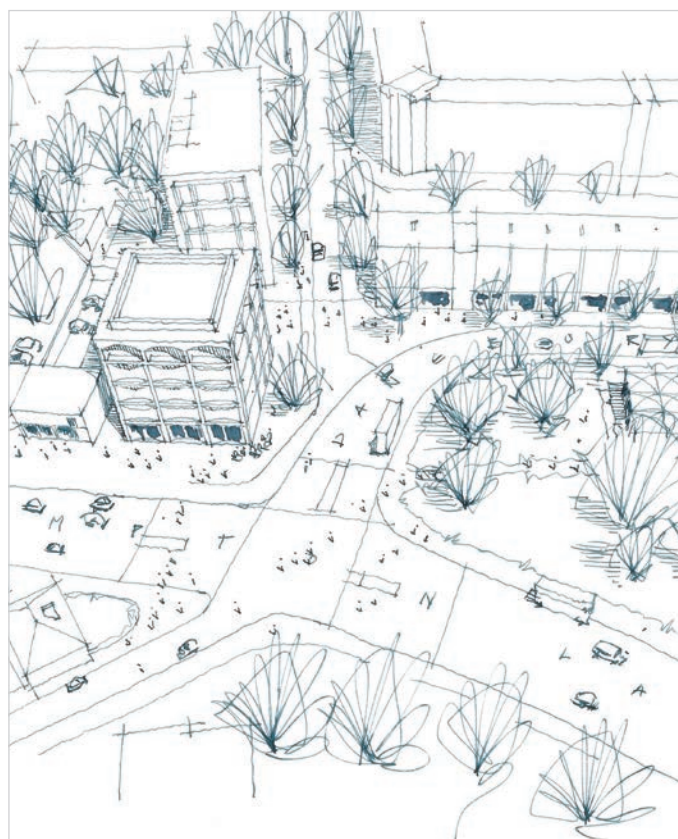
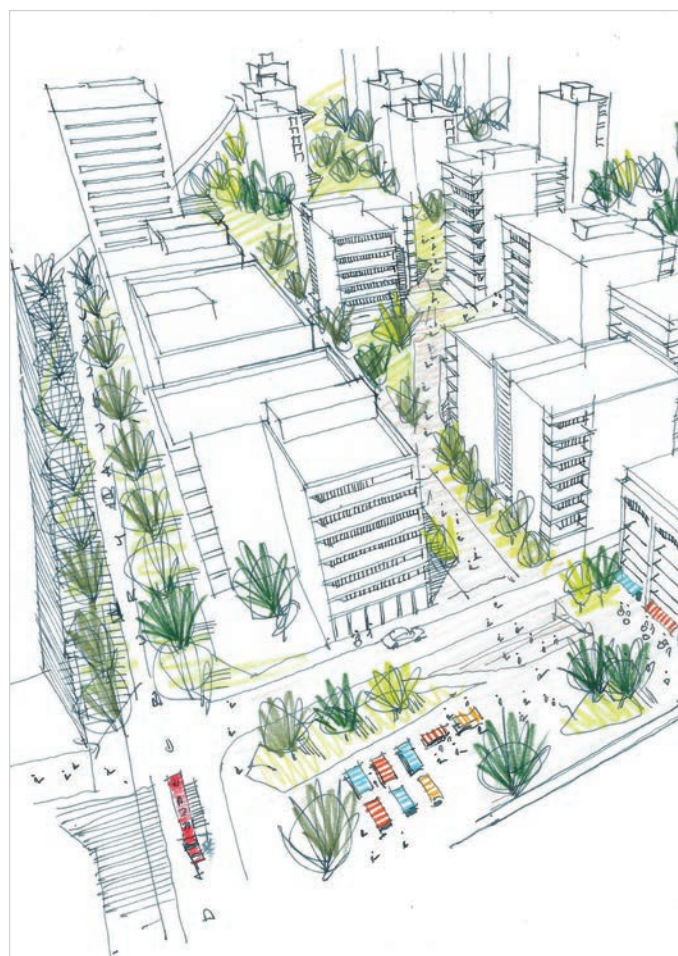
The vision ahead – what a ‘Yes’ vote means for Alton

The results of the ballot will be announced on **5pm on Friday October 17**. If it generates more ‘yes’ than ‘no’ votes, then Wandsworth Council will be able to press ahead with the plans that are set out in the Masterplan.

The outcome will pave the way forward for delivering the council’s shared vision for creating a vibrant, sustainable and inclusive community that is supported by residents and will ultimately transform Alton by providing:

New buildings in four main areas:

- 1 Danebury Neighbourhood** – new homes replacing blocks on Harbridge Avenue, Kingsclere Close and the northern side of Danebury Avenue, with a central green square. A community square/events space immediately west of Allbrook House (current ramp and car park location). A new block of homes to the north of the square with additional ground floor shops/community space.
 - 2 Danebury Shopping Parade** – a replacement row of shops with flats above, including a larger supermarket and an improved link to the Roehampton Sports and Fitness Centre.
 - 3 Portswood Place** – a new community building for the services currently based at 166/168 Roehampton Lane and the Danebury GP Practice.
 - 4 166/168 Roehampton Lane** – two new blocks of flats and a terrace of family homes. We are also regenerating the area at the corner of Roehampton Lane and Holybourne Avenue (the site of the old Co-op and pharmacy, youth club and housing offices). There will be two buildings:
- **A Civic Building** with a new larger library, youth space, community space, shared workspace and council offices
 - **A block of more than 50 homes** for council rent, including family-sized and wheelchair accessible homes.
- Once the ballot has closed we will update you on next steps, depending on the result. You will be able to find out more at community meetings, in the next newsletter and on the Alton Renewal Plan website.



Follow the latest online updates
altonrenewal.co.uk or our Alton Renewal
X feed - [@AltonRenewal](https://twitter.com/AltonRenewal)





Rockin in the ROOKERY

**FREE
entry**

**Saturday 16 August
2-5pm**

Bull Green - Downshire Field
**Come along to a spectacular
summer party featuring
Choice FM, stalls, a rodeo bull,
bouncy castle, games, face
painting, BBQ
and much more.**

The Alton Renewal Team and HTA design team will be there to share more information and answer any questions you might have on the regeneration plans.

If you can't make it we will be holding more drop-in events the following week around the estate. Keep an eye on our website for times and venues.



**Your
vote
matters**

Make sure you
have your say

The ballot is coming
**Make sure you vote between
September 22 and
October 16**

for the changes **you** want to
see happen in Alton



**Your vote matters
Alton's future
is in your hands**

Scan the QR
code to find
out more about
the ballot

